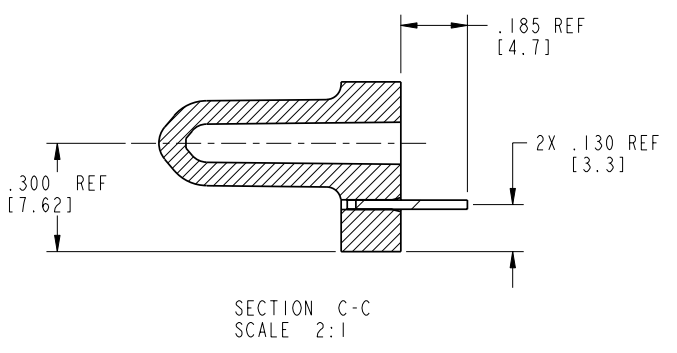
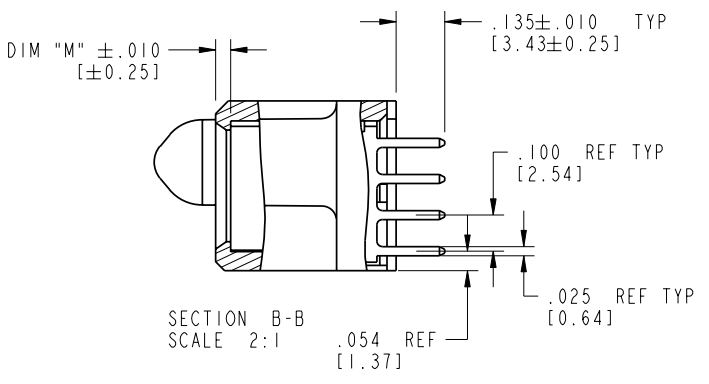
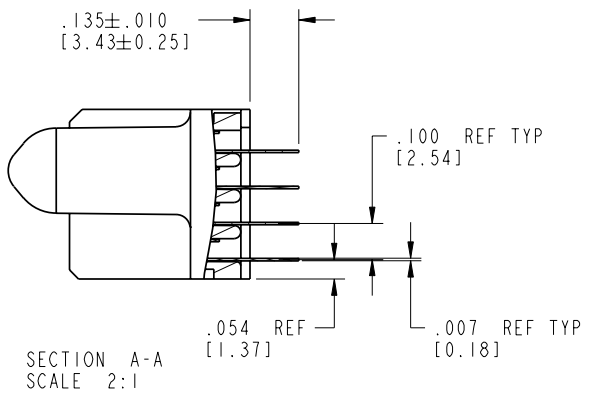




Tous droits strictement reserves. Reproduction ou communication a des tiers interdite sous quelque forme que ce soit sans autorisation écrite du propriétaire. Propriete de c FCI. Droits de reproduction FCI.

All rights strictly reserved. Reproduction or issue to third parties in any form whatever is not permitted without written authority from the proprietor. Property of FCI. Copyright FCI.

PRODUCT NUMBER  
51751-016--  
NOTE ③



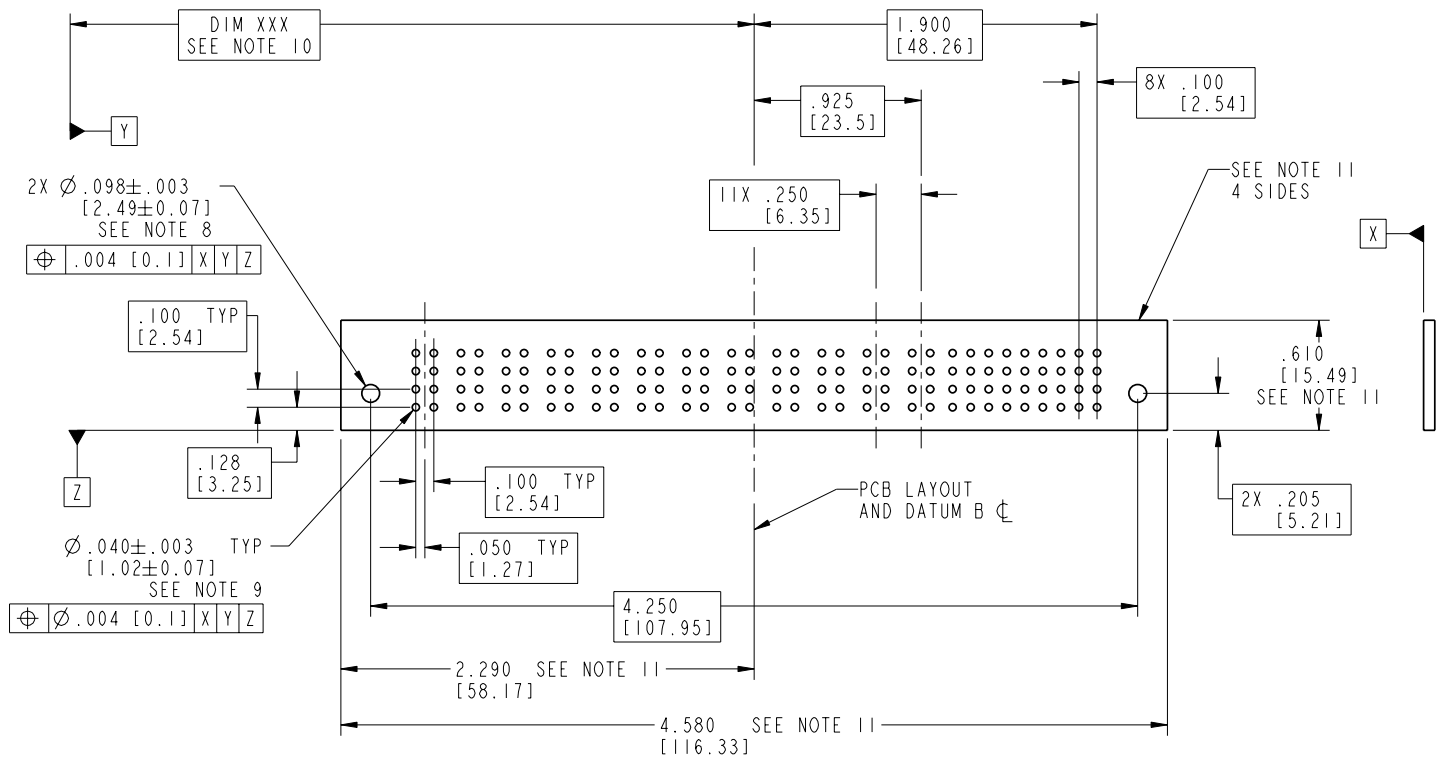
mat'l code		SEE NOTE 2		tolerances unless otherwise specified		CUSTOMER		 www.fciconnect.com	
lfr	ecn no.	dr	date	linear	.XX±.01/0.X±0.3	COPY		projection	title
A					.XXX±.005/0.XX±0.13				36S + 12P
				angles	.XXX±.002/0.XXX±0.051				VERTICAL SOLDER RECEPT
				dr	0°±2°	RYAN YUAN 03/03/06		INCH/MM	product family
				enr		SALLY LUO 03/03/06		scale	PwrBlade
				chr		BEER FU 03/03/06		1:1	code
				appd		JOSEPH HSIA 03/03/06		A	213
sheet index		revision sheet						size	dwg no
								51751-016	2 of 4

cage code 22526

Tous droits strictement réservés. Reproduction ou communication à des tiers interdite sous quelque forme que ce soit sans autorisation écrite du propriétaire. Propriété de c FCI. Droits de reproduction FCI.

All rights strictly reserved. Reproduction or issue to third parties in any form whatever is not permitted without written authority from the proprietor. Property of FCI. Copyright FCI.

PRODUCT NUMBER  
51751-016--  
NOTE ③



mat'l code		SEE NOTE 2		tolerances unless otherwise specified		CUSTOMER		 www.fciconnect.com	
lfr	ecn no.	dr	date	linear	.XX±.01/0.X±0.3	COPY			
A				projection	.XXX±.005/0.XX±0.13			title	36S + 12P
				angles	.XXX±.002/0.XXX±0.051			VERTICAL SOLDER RECEPT	
				dr	RYAN YUAN 03/03/06	INCH/MM		product family	PwrBlade
				enrg	SALLY LUO 03/03/06	scale		size	213
				chr	BEER FU 03/03/06	1:1		dwg no	51751-016
				appd	JOSEPH HSIA 03/03/06			code	3 of 4
sheet index	revision sheet								

cage code 22526

PRODUCT NUMBER  
 51751-016--  
 NOTE ③

NOTES:

1. DIMENSIONS AND TOLERANCES ARE IN ACCORDANCE WITH ASME Y14.5M, 1994 UNLESS OTHERWISE SPECIFIED.

CONNECTOR NOTES:

② HOUSING MATERIAL: UL 94 V-0 GLASS FILLED HIGH-TEMP THERMOPLASTIC  
 POWER CONTACT MATERIAL: COPPER ALLOY  
 SIGNAL PIN MATERIAL: COPPER ALLOY

③ PLATING:  
 SEE PRINT 10064183 FOR PLATING SPEC OF 51751-016; 51751-016LF

④ MANUFACTURER'S NAME, P/N, AND DATE CODE TO APPEAR ON THIS SURFACE.

5. PRODUCT SPECIFICATION GS-12-149.  
 APPLICATION SPECIFICATION BUS-20-067.

6. PACKAGED IN TRAYS.

PCB NOTES:

7. ALL HOLE DIAMETERS ARE FINISHED HOLE SIZE.

⑧ MOUNTING HOLES, WHERE APPLICABLE, ARE UNPLATED.

⑨  $\varnothing .0453 \pm .0010$  [1.151 $\pm$ 0.025] DRILLED HOLES PLATED WITH  
 .0003 [0.008] MIN SnPb OVER .001 [0.03]  
 TO .003 [0.08] Cu PLATING TO ACHIEVE  
 $\varnothing .040 \pm .003$  [1.02 $\pm$ .07] HOLE.

⑩ "DIM XXX" TO BE DETERMINED BY THE CUSTOMER.

⑪ CONNECTOR KEEP-OUT ZONE.

Tous droits strictement reserves. Reproduction ou communication a des tiers interdite  
 sous quelque forme que ce soit sans autorisation ecrite du proprietaire.  
 Propriete de c FCI. Droits de reproduction FCI.

A

A



All rights strictly reserved. Reproduction or issue to third parties in any  
 form whatever is not permitted without written authority from the proprietor.  
 Property of FCI. Copyright FCI.

B

B

mat'l code				SEE NOTE 2		tolerances unless otherwise specified		CUSTOMER		A FCI		www.fciconnect.com	
lfr	ecr no.	dr	date	linear	.XX±.01/0.X±0.3		COPY		projection	title			
A					.XXX±.005/0.XX±0.13		INCH/MM			36S + 12P			
				angles	.XXX±.002/0.XXX±0.051		scale		VERTICAL SOLDER RECEPT				
				dr	0°±2°		1:1		product family		code		
				enrg	RYAN YUAN	03/03/06			PwrBlade		213		
				chr	SALLY LUO	03/03/06			size		sheet		
				appd	BEER FU	03/03/06			A		4 of 4		
					JOSEPH HSIA	03/03/06			51751-016				
sheet index		revision sheet											