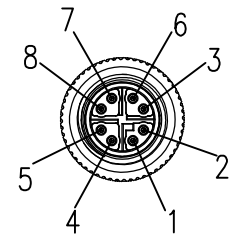
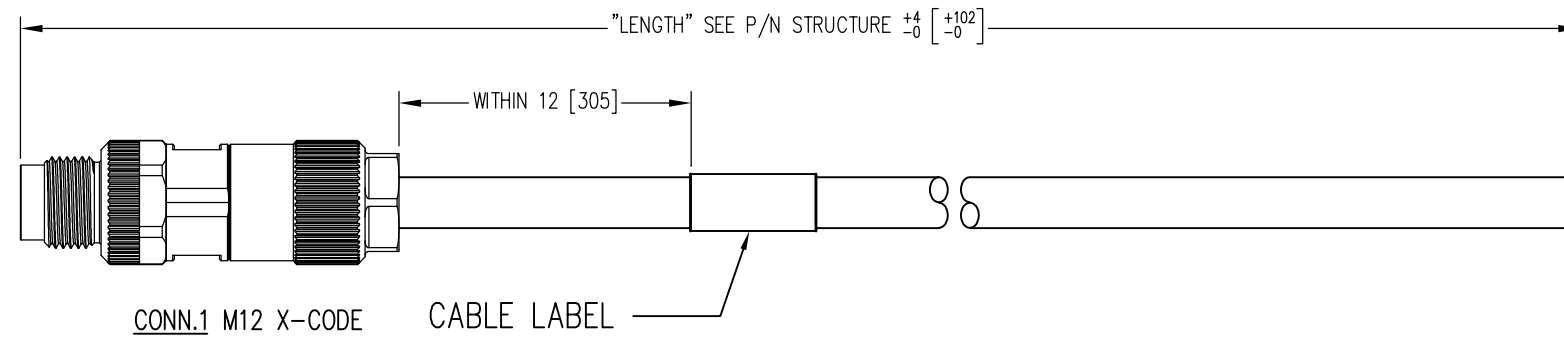


DATE	REV	ECN	APP'D. BY
2/25/21	A0	RELEASED	JME



PER EIA/TIA 568B



CONN.1 M12 X-CODE

CABLE LABEL

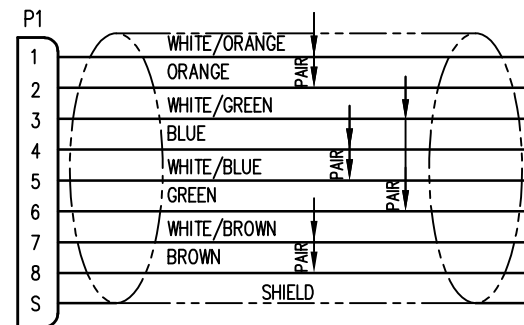
**Part Numbers Reference Table**

LENGTH	Part Number
1 M	BM-MyMD001M
3 M	BM-MyMD003M
5 M	BM-MyMD005M
10 M	BM-MyMD010M

NOTES:

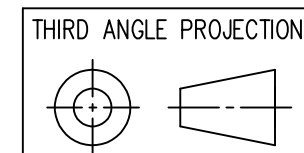
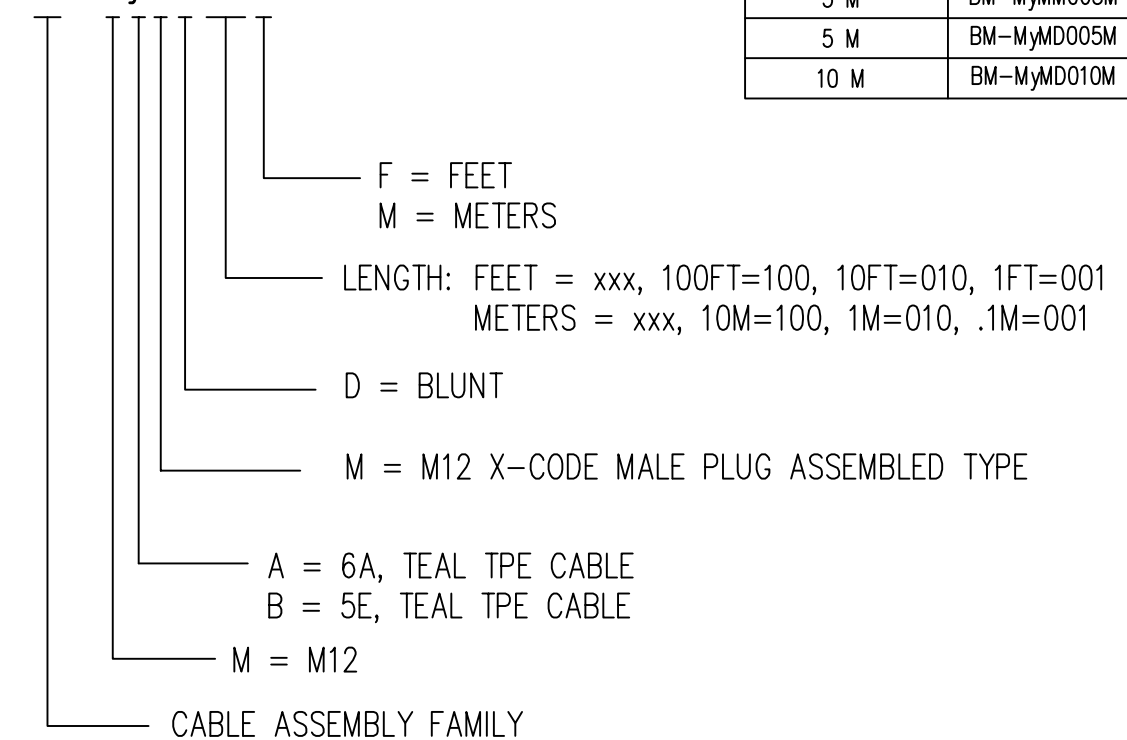
1. M12 CONNECTOR COMPONENTS:  
HOUSING: THERMOPLASTIC UL94 V-0  
CONTACTS: COPPER ALLOY  
SHELL: COPPER ALLOYS AND ZINC ALLOY  
SEALING: NBR  
CONTACT PLATING: UNDERPLATE: 50u"~70u" NICKEL  
CONTACT AREA: 10u" GOLD  
  
CABLE CONSTRUCTION:  
STRANDED, TIN PLATED COPPER  
4PR, SF/UTP, TYPE CMX  
TPE JACKET
2. ELECTRICAL TESTING:  
100% TRANSMISSION TESTED FOR PERFORMANCE
3. PACKAGING:  
ONE CABLE PER BAG

PIN ASSIGNMENT  
568B STANDARD WIRING MAP



P/N STRUCTURE:

BM-MyMDxxxM



1118 Susquehanna Trail South  
Glen Rock, PA 17327-9199  
(717) 235-7512  
<http://www.stewartconnector.com>

DO NOT SCALE DRAWING DRAWING IS SUBJECT TO CHANGE WITHOUT NOTICE	TITLE: M12 X-CODE MALE TO BLUNT	DRN BY: GWL	DATE 2-23-21
DIMENSIONS: INCHES [METRIC] UNLESS OTHERWISE SPECIFIED TOLERANCES ARE ±.008 [0.20] ANGLES ARE ± 1°	THIS DRAWING AND THE SUBJECT MATTER SHOWN THEREON ARE CONFIDENTIAL AND THE PROPRIETARY PROPERTY OF STEWART CONNECTOR AND SHALL NOT BE REPRODUCED, COPIED, OR USED IN ANY MANNER WITHOUT PRIOR WRITTEN CONSENT OF STEWART CONNECTOR. ONE OR MORE U.S. PATENTS MAY APPLY TO THIS PRODUCT. FOR DETAILS, PLEASE VISIT: <a href="http://BELFUSE.COM/STEWART/STEWART_PATENTS/">HTTP://BELFUSE.COM/STEWART/STEWART_PATENTS/</a>	APPD BY: JME	DATE 2-25-21
SHEET NO. 1 OF 1		DWG NO. CT999252	REV. A0

