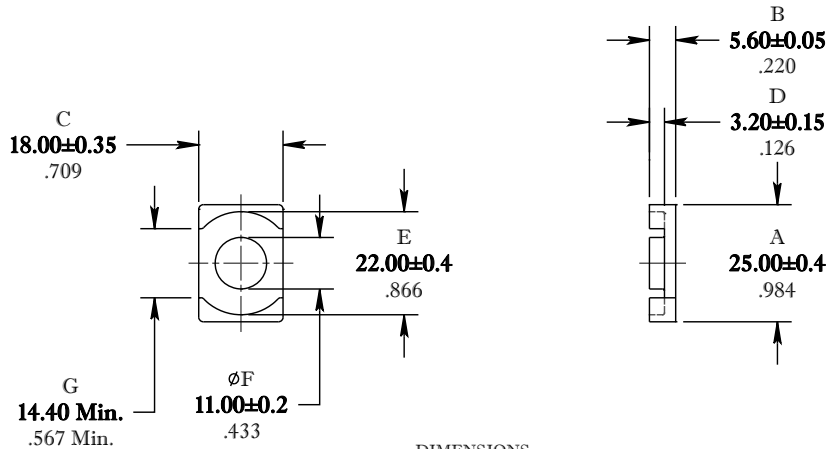


** Not all features are shown in this drawing. For more detailed information, please contact your Fair-Rite representative.

UNCONTROLLED ~CATALOG~ DRAWING

SIZE	PART NO.	REV.
B	9567250602	~



DIMENSIONS
BOLD NUMBERS ARE IN MILLIMETERS
 LIGHT NUMBERS ARE IN INCHES

ELECTRICAL SPECIFICATIONS						
$\Sigma l/A(\text{mm}^{-1})$	l_e (mm)	A_e (mm ²)	A_{Min} (mm ²)	V_e (mm ²)	A_L (nH) @10kHz <10gauss	Q @ 50MHz <1gauss
0.352	32.8	93.3	82.8	3060	110 Min.	> 50
MATE PAIR: CLAMPING FORCE = 10 lbs.						

POWER LOSS @ 25°C

f = 5 MHz, 100g P.L. < 0.37 Watts
 f = 10 MHz, 100g P.L. < 1.05 Watts

FAIR-RITE PRODUCTS CORP.						
TITLE "EQ" CORE						
DRAWN BY D. FOOTE	DATE 4/12/2019	SIZE	PART NO.		REV.	
CHKD BY		B	9567250602		~	
APPRVD BY		SCALE	NONE	SHEET	1 of 1	

FR# 67