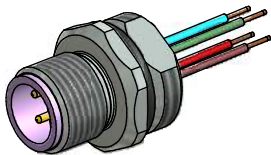


**Contact assignment:**

- 1 brown
- 2 Profibus-A green
- 3 blue
- 4 Profibus-B red



**Technical specification:**

Rated voltage: 250 V  
IEC 61076-2-101

Current rating: 4 A at 40°C  
IEC 61076-2-101

Insulation resistance: >=100 MΩ  
IEC 60512

Pollution degree: 3/2  
IEC 60664-1

Degree of protection: IP 67, in mated condition  
IEC 60529

Temperature range: -30°C ... +80°C

Mating cycles: >=100  
IEC 60512-9a

**Materials:**

Contact: CuZn

Contact plating: Nickel, gold plated

Contact carrier: PBT GF, UL 94

Sealing: FPM

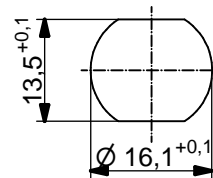
Socket housing: CuZn, nickel plated

Grouting: Polyurethane-resin, UL 94

**Installation specification:**

recommended torque: 1-1,2 Nm

Conec installation tool: Torque wrench: 36-000200  
Insert across flats 17: 36-000230



Minimum wall thickness 1,5mm,  
alternativ panel cut-out d=16,1

Part no:	Description:	Pos	Length L:	Litze:
43-01043	SAL - 12B - FS4.3 - 0,5	4	0,5m	AWG 22 PVC, UL
43-xxxxx	SAL - 12B - FS4.3 - ...	4	x	

DO NOT ALTER CAD DRAWING BY HAND Directive 2002/95/EC RoHS compliant	Index: d 01.02.13 MG Ä4631 Data sheet revised, technical specification changed, materials corrected	dim. in mm		title: <b>Male socket M12x1 with wire, frontmounting, Profibus DP</b>	
		date	name		
	tolerance of wire: L <= 0,5m: L + 20mm L > 0,5m: L + 4%	drawn	01.03.07	Fromm	dwg no: <div style="text-align: center; font-size: 1.2em; font-weight: bold;">43K1A295</div>
	general tolerance: 0 ± 0,50mm 0,0 ± 0,25mm 0,00 ± 0,10mm	appd.	01.03.07	Mankopf	
		part no:		see table	

THIS DRAWING MAY NOT BE COPIED OR REPRODUCED IN ANY WAY, AND MAY NOT BE PASSED ON TO A THIRD PARTY WITHOUT WRITTEN PERMISSION. OWNERSHIP AND COPYRIGHT OF CONEC GmbH