



ANATECH ELECTRONICS INC
RF & Microwave Filters & Products

847 MHz Ceramic Bandpass Filter

Part Number: **AM847B1333**



Electrical specifications

Center Frequency: 847 MHz
Bandwidth: 30 MHz
VSWR: 1.7 : 1 max
Input / Output Impedance: 50 Ohms
Passband: 832-862 MHz
Passband Insertion Loss: 4.0 dB max
Passband Ripple: 1.0 dB max
Rejection: 25 dB min 791-821 MHz
Rejection 2: 30 dB min 678-709 MHz
Rejection 3: 50 dB min 524.8-554.8 MHz
Power Handling: 2 W

Mechanical

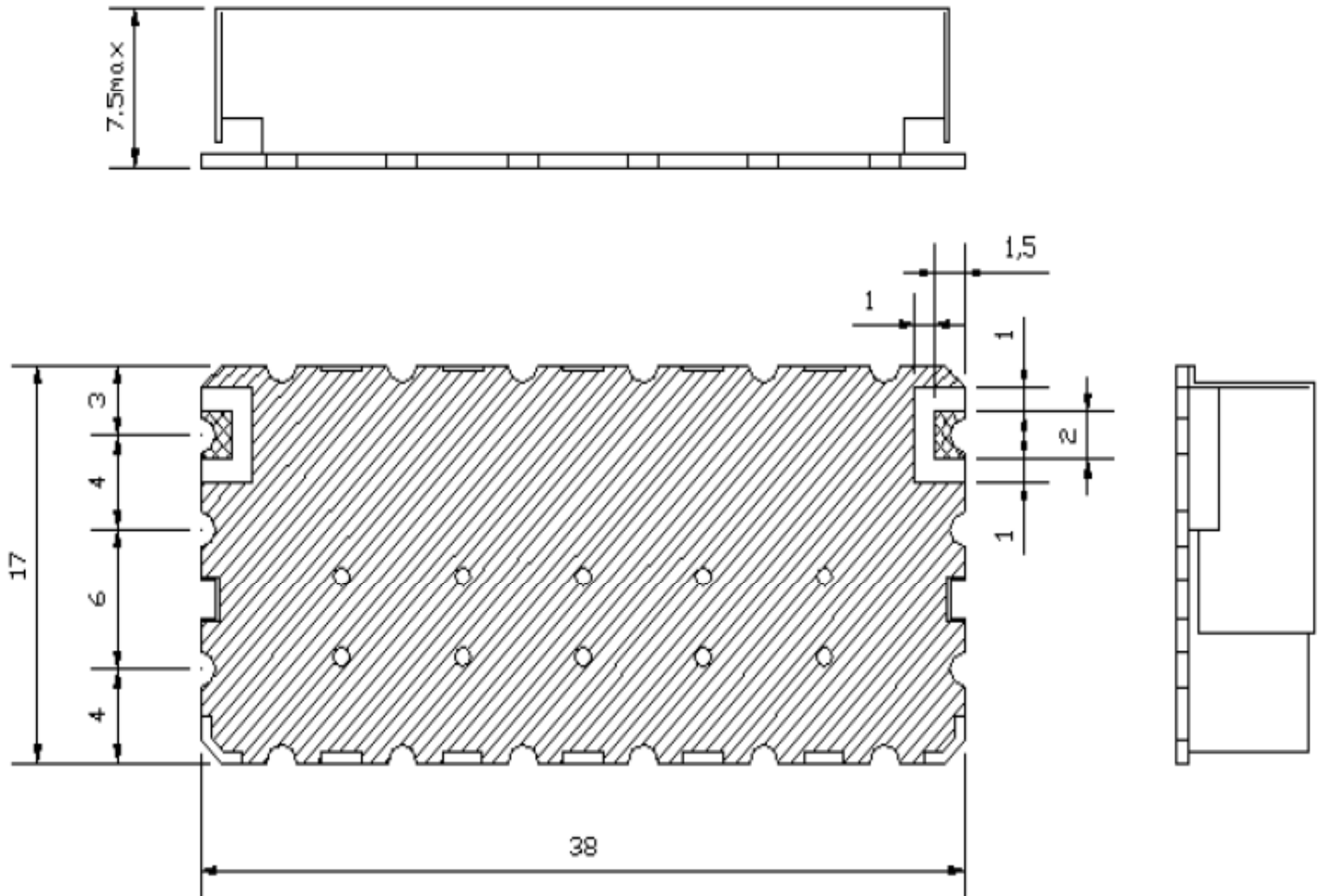
Mounting Method: SMT
Dimensions: 38 x 17 x 7.5 mm

Environmental

Operating Temperature: -20°C to 70°C
Storage Temperature: -50°C to +90°C

This product is RoHS compliant.

Outline Drawing:





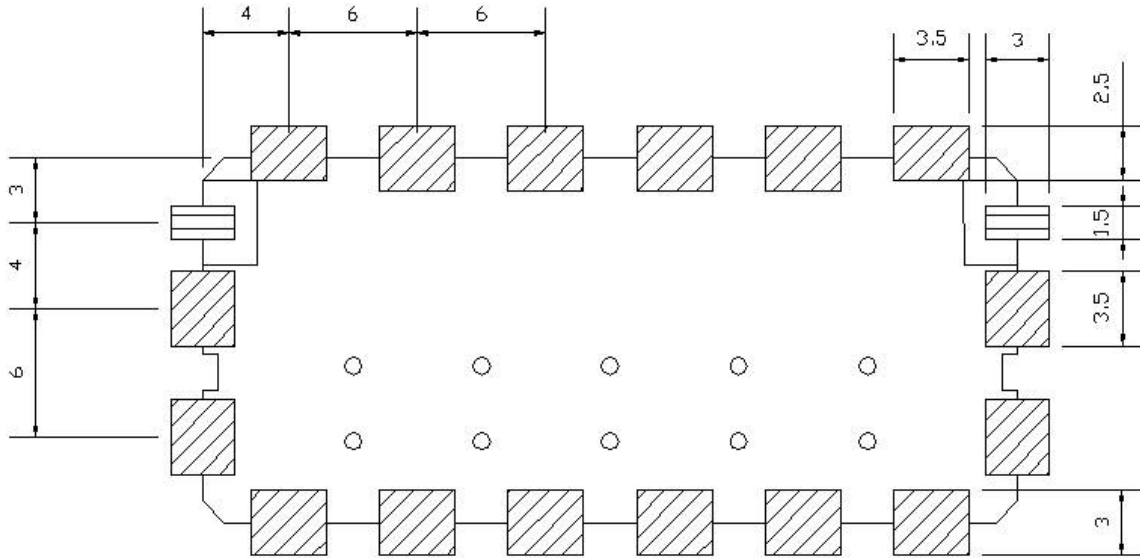
ANATECH ELECTRONICS INC
RF & Microwave Filters & Products

847 MHz Ceramic Bandpass Filter

Part Number: **AM847B1333**



Foot Print:



 IN/OUT PORT

Unit : mm

Tolerance : ± 0.3



ANATECH ELECTRONICS INC
RF & Microwave Filters & Products

847 MHz Ceramic Bandpass Filter

Part Number: AM847B1333



Response Plots:

