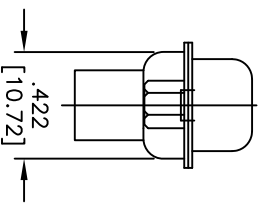
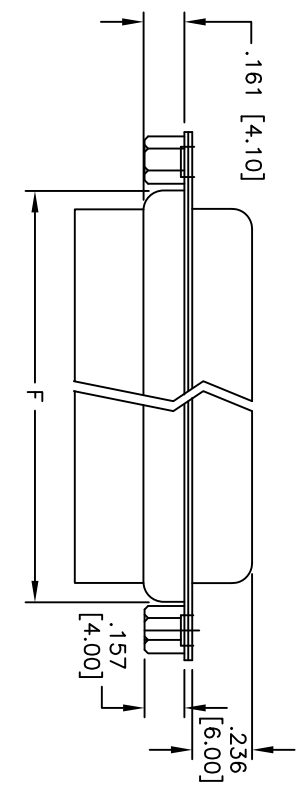
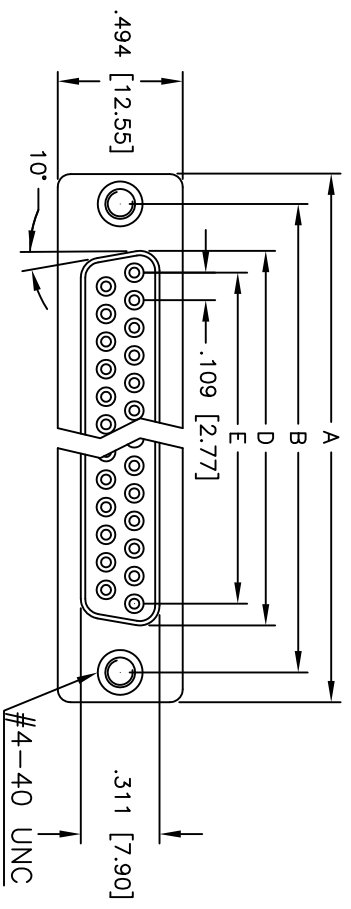


APPROVED: \_\_\_\_\_  
 DATE: \_\_\_\_\_ TITLE: \_\_\_\_\_

Rev	AWO #	Description	Date	Appr
-		RELEASED	4/29/05	
A		REDRAW	8/15/11	



DXXX	NO. OF CONTACTS	DIMENSIONS					
		A	B	D	E	F	
DE09	9	1.213 [30.81]	.984 [24.99]	.643 [16.33]	.436 [11.08]	.756 [19.20]	
DA15	15	1.541 [39.14]	1.312 [33.32]	.971 [24.66]	.763 [19.39]	1.091 [27.70]	
DB25	25	2.088 [53.04]	1.852 [47.04]	1.511 [38.38]	1.309 [33.24]	1.618 [41.10]	
DC37	37	2.729 [69.32]	2.500 [63.50]	2.159 [54.84]	1.963 [49.86]	2.256 [57.30]	

**SPECIFICATIONS:**  
 Material:  
 Insulator: PBT, glass reinforced, rated UL 94V-0  
 Insulator color: Black  
 Contacts: Phosphor Bronze  
 Shell: SPCC  
 Hardware: Brass, Nickel plated  
 Plating:  
 Gold flash over Nickel underplate overall  
 Electrical:  
 Operating voltage: 250 VAC max  
 Current rating: 5 Amps max  
 Contact resistance: 20 mohms max  
 Insulation resistance: 1,000 Mohms min @ 500 VDC  
 Dielectric withstanding voltage: 1,000 VAC for 1 minute  
 Temperature Rating:  
 Operating temperature: -65°C to +125°C  
 Environmental:  
 Lead free, RoHS compliant

**ADAM TECH**

909 Railway Avenue, Union, NJ 07083  
 Phone: 908-687-5000 Fax: 908-687-5710

TITLE: D-SUB SOCKET, CRIMP AND POKE  
 RIVETED #4-40 CLINCH NUTS

UNLESS OTHERWISE SPECIFIED ALL DIMENSIONS ARE INCHES [MM]		TOLERANCES: EXCEPT AS NOTED	
.X	± .10	ØX	± .10
.XX	± .020	ØXXX	± .015
.XXX	± .015	ØXXX	± .010
APPROVALS		DATE	
DRAWN	SS	4/29/05	
CHECKED			
APPROVED			
SIZE	PART NO.	DXXX-SR-SL	
X			
REF: S00087T	SCALE: NTS	SHEET 1 OF 1	

