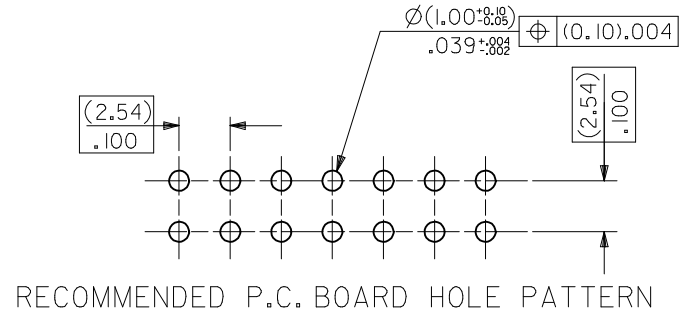
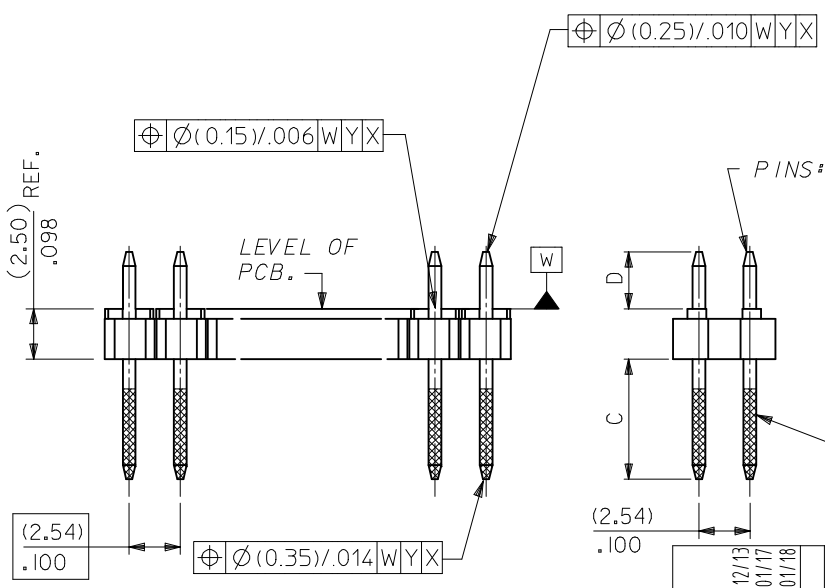


WAFER: 15% GLASS FILLED POLYESTER TO UL 94V-0. COLOUR: BLACK.

| CKT SIZE | DIM. "A" | | DIM. "B" ^(+0.20 / -0.008) | | CKT SIZE | DIM. "A" | | DIM. "B" ^(+0.20 / -0.008) | |
|----------|----------|-------|--------------------------------------|-------|----------|----------|-------|--------------------------------------|-------|
| 2X 1 | | | (2.54) | .100 | 2X21 | (50.80) | 2.000 | (53.34) | 2.100 |
| 2X 2 | (2.54) | .100 | (5.08) | .200 | 2X22 | (53.34) | 2.100 | (55.88) | 2.200 |
| 2X 3 | (5.08) | .200 | (7.62) | .300 | 2X23 | (55.88) | 2.200 | (58.42) | 2.300 |
| 2X 4 | (7.62) | .300 | (10.16) | .400 | 2X24 | (58.42) | 2.300 | (60.96) | 2.400 |
| 2X 5 | (10.16) | .400 | (12.70) | .500 | 2X25 | (60.96) | 2.400 | (63.50) | 2.500 |
| 2X 6 | (12.70) | .500 | (15.24) | .600 | 2X26 | (63.50) | 2.500 | (66.04) | 2.600 |
| 2X 7 | (15.24) | .600 | (17.78) | .700 | 2X27 | (66.04) | 2.600 | (68.58) | 2.700 |
| 2X 8 | (17.78) | .700 | (20.32) | .800 | 2X28 | (68.58) | 2.700 | (71.12) | 2.800 |
| 2X 9 | (20.32) | .800 | (22.86) | .900 | 2X29 | (71.12) | 2.800 | (73.66) | 2.900 |
| 2X10 | (22.86) | .900 | (25.40) | 1.000 | 2X30 | (73.66) | 2.900 | (76.20) | 3.000 |
| 2X11 | (25.40) | 1.000 | (27.94) | 1.100 | 2X31 | (76.20) | 3.000 | (78.74) | 3.100 |
| 2X12 | (27.94) | 1.100 | (30.48) | 1.200 | 2X32 | (78.74) | 3.100 | (81.28) | 3.200 |
| 2X13 | (30.48) | 1.200 | (33.02) | 1.300 | 2X33 | (81.28) | 3.200 | (83.82) | 3.300 |
| 2X14 | (33.02) | 1.300 | (35.56) | 1.400 | 2X34 | (83.82) | 3.300 | (86.36) | 3.400 |
| 2X15 | (35.56) | 1.400 | (38.10) | 1.500 | 2X35 | (86.36) | 3.400 | (88.90) | 3.500 |
| 2X16 | (38.10) | 1.500 | (40.64) | 1.600 | 2X36 | (88.90) | 3.500 | (91.44) | 3.600 |
| 2X17 | (40.64) | 1.600 | (43.18) | 1.700 | 2X37 | (91.44) | 3.600 | (93.98) | 3.700 |
| 2X18 | (43.18) | 1.700 | (45.72) | 1.800 | 2X38 | (93.98) | 3.700 | (96.52) | 3.800 |
| 2X19 | (45.72) | 1.800 | (48.26) | 1.900 | 2X39 | (96.52) | 3.800 | (99.06) | 3.900 |
| 2X20 | (48.26) | 1.900 | (50.80) | 2.000 | 2X40 | (99.06) | 3.900 | (101.60) | 4.000 |



- NOTES
- PLEASE REFER TO SHT 2 FOR PLATING DETAILS.
 - PLEASE REFER TO SHT 3-8 FOR DIMENSIONS C & D.
 - RECOMMENDED PCB THICKNESS 1.60MM
 - PRODUCT SPECIFICATION: PS-99020-0001

ADD DATUM
 EC NO: S2017-0354
 DRWN: FCS00
 CHKD: CGOH
 APPR: KHLIM
 2016/12/13
 2017/01/17
 2017/01/18

| QUALITY SYMBOLS | GENERAL TOLERANCES (UNLESS SPECIFIED) | |
|-----------------|--|-------|
| | mm | INCH |
| $\nabla = 0$ | 4 PLACES ± --- | ± --- |
| $\nabla = 0$ | 3 PLACES ± --- | ± --- |
| $\nabla = 0$ | 2 PLACES ± 0.20 | ± --- |
| | 1 PLACE ± --- | ± --- |
| | 0 PLACE ± --- | ± --- |
| | ANGULAR ± 3° | |
| | DRAFT WHERE APPLICABLE MUST REMAIN WITHIN DIMENSIONS | |

| DIMENSION STYLE | | SCALE | DESIGN UNITS | THIRD ANGLE PROJECTION |
|-----------------|---|---|--------------|------------------------|
| MM ONLY | | NTS | METRIC | |
| DRAWN BY | DATE | TITLE | | |
| DB | 1987/07/16 | C GRID III DUAL ROW STRAIGHT PIN HEADER | | |
| CHECKED BY | DATE | | | |
| DB | 1987/07/16 | | | |
| APPROVED BY | DATE | | | |
| MLONG | 2012/02/24 | | | |
| MATERIAL NO. | DOCUMENT NO. | | | |
| SEE TABLE | SD-90131-001 | | | |
| SIZE A3 | THIS DRAWING CONTAINS INFORMATION THAT IS PROPRIETARY TO MOLEX INCORPORATED AND SHOULD NOT BE USED WITHOUT WRITTEN PERMISSION | | | |

molex

SD-90131-001

SHEET NO. 1 OF 8

| PLATING OPTIONS | PLATING DESCRIPTION |
|-----------------|---|
| A | 3.00µm MIN TIN OVER 1.27MIN NICKEL OVERALL |
| B | 0.38µm MIN GOLD IN SELECTED AREA AND 3.00µm MIN TIN IN SELECTED AREA AND 1.30µm MIN NICKEL OVERALL |
| C | 0.76µm MIN GOLD IN SELECTED AREA AND 3.00µm MIN TIN IN SELECTED AREA AND 1.30µm MIN NICKEL OVERALL |
| D | 0.05-0.10µm GOLD FLASH IN SELECTED AREA AND 3.00µm MIN TIN IN SELECTED AREA AND 1.30µm MIN NICKEL OVERALL |
| E | 0.38µm MIN GOLD IN SELECTED AREA (2 SIDES) AND 3.00µm MIN TIN IN SELECTED AREA AND 1.30µm MIN NICKEL OVERALL |
| F | 0.76µm MIN GOLD IN SELECTED AREA (2 SIDES) AND 3.00µm MIN TIN IN SELECTED AREA AND 1.30µm MIN NICKEL OVERALL |
| G | 0.05-0.10µm GOLD FLASH IN SELECTED AREA (2 SIDES) AND 3.00µm MIN TIN IN SELECTED AREA AND 1.30µm MIN NICKEL OVERALL |

| | | | | | | | | | | |
|---|---|---------------------------------------|--|-----------------------------------|------------------|--------------------|---|--|--|--|
| ADD DATUM EC NO: S2017-0354 DRWN: FCS00 2016/12/13 CHKD: G0H 2017/01/17 APPR: KHLIM 2017/01/18 | QUALITY SYMBOLS $\nabla = 0$ $\nabla = 0$ $\nabla = 0$ | GENERAL TOLERANCES (UNLESS SPECIFIED) | | DIMENSION STYLE MM ONLY | | SCALE NTS | DESIGN UNITS METRIC | THIRD ANGLE PROJECTION | | |
| | | | | mm | INCH | DRAWN BY DB | DATE 1987/07/16 | TITLE C GRID III DUAL ROW STRAIGHT PIN HEADER | | |
| | | 4 PLACES | ± --- | ± --- | CHECKED BY DB | DATE 1987/07/16 | molex MATERIAL NO. SD-90131-001 SHEET NO. 2 OF 8 | | | |
| | | 3 PLACES | ± --- | ± --- | APPROVED BY | DATE 2012/02/24 | | | | |
| 2 PLACES | ± 0.20 | ± --- | ANGULAR ± 3 ° | | SEE TABLE | | DOCUMENT NO. | | | |
| 1 PLACE | ± --- | ± --- | DRAFT WHERE APPLICABLE MUST REMAIN WITHIN DIMENSIONS | | SIZE A3 | | THIS DRAWING CONTAINS INFORMATION THAT IS PROPRIETARY TO MOLEX INCORPORATED AND SHOULD NOT BE USED WITHOUT WRITTEN PERMISSION | | | |
| 0 PLACE | ± --- | ± --- | | | | | | | | |

| CIRCUIT SIZE | PLATING TYPE A | PLATING TYPE E | PLATING TYPE F |
|--------------|----------------|----------------|----------------|
| | PART NO. | PART NO. | PART NO. |
| 2 X 1 | 90131-0121 | 90131-0761 | 90131-0921 |
| 2 X 2 | ▲ -0122 | ▲ -0762 | ▲ -0922 |
| 2 X 3 | -0123 | -0763 | -0923 |
| 2 X 4 | -0124 | -0764 | -0924 |
| 2 X 5 | -0125 | -0765 | -0925 |
| 2 X 6 | -0126 | -0766 | -0926 |
| 2 X 7 | -0127 | -0767 | -0927 |
| 2 X 8 | -0128 | -0768 | -0928 |
| 2 X 9 | -0129 | -0769 | -0929 |
| 2 X 10 | -0130 | -0770 | -0930 |
| 2 X 11 | -0131 | -0771 | -0931 |
| 2 X 12 | -0132 | -0772 | -0932 |
| 2 X 13 | -0133 | -0773 | -0933 |
| 2 X 14 | -0134 | -0774 | -0934 |
| 2 X 15 | -0135 | -0775 | -0935 |
| 2 X 16 | -0136 | -0776 | -0936 |
| 2 X 17 | -0137 | -0777 | -0937 |
| 2 X 18 | -0138 | -0778 | -0938 |
| 2 X 19 | -0139 | -0779 | -0939 |
| 2 X 20 | -0140 | -0780 | -0940 |
| 2 X 21 | -0141 | -0781 | -0941 |
| 2 X 22 | -0142 | -0782 | -0942 |
| 2 X 23 | -0143 | -0783 | -0943 |
| 2 X 24 | -0144 | -0784 | -0944 |
| 2 X 25 | -0145 | -0785 | -0945 |
| 2 X 26 | -0146 | -0786 | -0946 |
| 2 X 27 | -0147 | -0787 | -0947 |
| 2 X 28 | -0148 | -0788 | -0948 |
| 2 X 29 | -0149 | -0789 | -0949 |
| 2 X 30 | -0150 | -0790 | -0950 |
| 2 X 31 | -0151 | -0791 | -0951 |
| 2 X 32 | -0152 | -0792 | -0952 |
| 2 X 33 | -0153 | -0793 | -0953 |
| 2 X 34 | -0154 | -0794 | -0954 |
| 2 X 35 | -0155 | -0795 | -0955 |
| 2 X 36 | -0156 | -0796 | -0956 |
| 2 X 37 | -0157 | -0797 | -0957 |
| 2 X 38 | -0158 | -0798 | -0958 |
| 2 X 39 | ▼ -0159 | ▼ -0799 | ▼ -0959 |
| 2 X 40 | 90131-0160 | 90131-0800 | 90131-0960 |

DIM C (+0.20/-0.30) ±.008 (6.75) .266

DIM D (+0.20/-0.30) ±.008 (2.90) .114

STANDARD PRODUCTS

| | | | | | | | |
|--|---|---|---|-------|------------------------------|--|------------------|
| ADD DATUM EC NO: S2017-0354 DRWN: FCS00 2016/12/13 CHKD: CGOH 2017/01/17 APPR: KHL IM 2017/01/18 | QUALITY SYMBOLS | GENERAL TOLERANCES (UNLESS SPECIFIED) | DIMENSION STYLE | SCALE | DESIGN UNITS | THIRD ANGLE PROJECTION | |
| | $\nabla_F = 0$ $\nabla_E = 0$ $\nabla_B = 0$ | mm INCH 4 PLACES ± --- ± --- 3 PLACES ± --- ± --- 2 PLACES ± 0.20 ± --- 1 PLACE ± --- ± --- 0 PLACE ± --- ± --- | MM ONLY | NTS | METRIC | DRAWN BY: DB DATE: 1987/07/16 CHECKED BY: DB DATE: 1987/07/16 APPROVED BY: MLONG DATE: 2012/02/24 | TITLE |
| | ANGULAR ± 3° DRAFT WHERE APPLICABLE MUST REMAIN WITHIN DIMENSIONS | SEE TABLE | C GRID III DUAL ROW STRAIGHT PIN HEADER | | molex SD-90131-001 | | SHEET NO. 3 OF 8 |
| | THIS DRAWING CONTAINS INFORMATION THAT IS PROPRIETARY TO MOLEX INCORPORATED AND SHOULD NOT BE USED WITHOUT WRITTEN PERMISSION | | | | | | |

| CIRCUIT SIZE | PLATING TYPE A PART NO. | PLATING TYPE E PART NO. | PLATING TYPE F PART NO. |
|--------------|-------------------------|-------------------------|-------------------------|
| 2 X 1 | 90131-0041 | 90131-0681 | 90131-0841 |
| 2 X 2 | ▲ -0042 | ▲ -0682 | ▲ -0842 |
| 2 X 3 | -0043 | -0683 | -0843 |
| 2 X 4 | -0044 | -0684 | -0844 |
| 2 X 5 | -0045 | -0685 | -0845 |
| 2 X 6 | -0046 | -0686 | -0846 |
| 2 X 7 | -0047 | -0687 | -0847 |
| 2 X 8 | -0048 | -0688 | -0848 |
| 2 X 9 | -0049 | -0689 | -0849 |
| 2 X 10 | -0050 | -0690 | -0850 |
| 2 X 11 | -0051 | -0691 | -0851 |
| 2 X 12 | -0052 | -0692 | -0852 |
| 2 X 13 | -0053 | -0693 | -0853 |
| 2 X 14 | -0054 | -0694 | -0854 |
| 2 X 15 | -0055 | -0695 | -0855 |
| 2 X 16 | -0056 | -0696 | -0856 |
| 2 X 17 | -0057 | -0697 | -0857 |
| 2 X 18 | -0058 | -0698 | -0858 |
| 2 X 19 | -0059 | -0699 | -0859 |
| 2 X 20 | -0060 | -0700 | -0860 |
| 2 X 21 | -0061 | -0701 | -0861 |
| 2 X 22 | -0062 | -0702 | -0862 |
| 2 X 23 | -0063 | -0703 | -0863 |
| 2 X 24 | -0064 | -0704 | -0864 |
| 2 X 25 | -0065 | -0705 | -0865 |
| 2 X 26 | -0066 | -0706 | -0866 |
| 2 X 27 | -0067 | -0707 | -0867 |
| 2 X 28 | -0068 | -0708 | -0868 |
| 2 X 29 | -0069 | -0709 | -0869 |
| 2 X 30 | -0070 | -0710 | -0870 |
| 2 X 31 | -0071 | -0711 | -0871 |
| 2 X 32 | -0072 | -0712 | -0872 |
| 2 X 33 | -0073 | -0713 | -0873 |
| 2 X 34 | -0074 | -0714 | -0874 |
| 2 X 35 | -0075 | -0715 | -0875 |
| 2 X 36 | -0076 | -0716 | -0876 |
| 2 X 37 | -0077 | -0717 | -0877 |
| 2 X 38 | -0078 | -0718 | -0878 |
| 2 X 39 | ▼ -0079 | ▼ -0719 | ▼ -0879 |
| 2 X 40 | 90131-0080 | 90131-0720 | 90131-0880 |

DIM C (+0.20) ±.008 (5.75) .226

DIM D (+0.20) ±.008 ±.012 (2.90) .114

| CIRCUIT SIZE | PLATING TYPE A PART NO. | PLATING TYPE E PART NO. | PLATING TYPE F PART NO. |
|--------------|-------------------------|-------------------------|-------------------------|
| 2 X 1 | 90131-0081 | 90131-0721 | 90131-0881 |
| 2 X 2 | ▲ -0082 | ▲ -0722 | ▲ -0882 |
| 2 X 3 | -0083 | -0723 | -0883 |
| 2 X 4 | -0084 | -0724 | -0884 |
| 2 X 5 | -0085 | -0725 | -0885 |
| 2 X 6 | -0086 | -0726 | -0886 |
| 2 X 7 | -0087 | -0727 | -0887 |
| 2 X 8 | -0088 | -0728 | -0888 |
| 2 X 9 | -0089 | -0729 | -0889 |
| 2 X 10 | -0090 | -0730 | -0890 |
| 2 X 11 | -0091 | -0731 | -0891 |
| 2 X 12 | -0092 | -0732 | -0892 |
| 2 X 13 | -0093 | -0733 | -0893 |
| 2 X 14 | -0094 | -0734 | -0894 |
| 2 X 15 | -0095 | -0735 | -0895 |
| 2 X 16 | -0096 | -0736 | -0896 |
| 2 X 17 | -0097 | -0737 | -0897 |
| 2 X 18 | -0098 | -0738 | -0898 |
| 2 X 19 | -0099 | -0739 | -0899 |
| 2 X 20 | -0100 | -0740 | -0900 |
| 2 X 21 | -0101 | -0741 | -0901 |
| 2 X 22 | -0102 | -0742 | -0902 |
| 2 X 23 | -0103 | -0743 | -0903 |
| 2 X 24 | -0104 | -0744 | -0904 |
| 2 X 25 | -0105 | -0745 | -0905 |
| 2 X 26 | -0106 | -0746 | -0906 |
| 2 X 27 | -0107 | -0747 | -0907 |
| 2 X 28 | -0108 | -0748 | -0908 |
| 2 X 29 | -0109 | -0749 | -0909 |
| 2 X 30 | -0110 | -0750 | -0910 |
| 2 X 31 | -0111 | -0751 | -0911 |
| 2 X 32 | -0112 | -0752 | -0912 |
| 2 X 33 | -0113 | -0753 | -0913 |
| 2 X 34 | -0114 | -0754 | -0914 |
| 2 X 35 | -0115 | -0755 | -0915 |
| 2 X 36 | -0116 | -0756 | -0916 |
| 2 X 37 | -0117 | -0757 | -0917 |
| 2 X 38 | -0118 | -0758 | -0918 |
| 2 X 39 | ▼ -0119 | ▼ -0759 | ▼ -0919 |
| 2 X 40 | 90131-0120 | 90131-0760 | 90131-0920 |

DIM C (+0.20) ±.008 (5.75) .226

DIM D (+0.25) ±.010 (4.50) .177

NON-STANDARD PRODUCTS

ADD DATUM
EC NO: S2017-0354
2016/12/13
DRWN:FC500
CHKD:GGH
2017/01/17
APPR:KHLIM
2017/01/18

QUALITY SYMBOLS
FA=0
FG=0
FB=0

GENERAL TOLERANCES (UNLESS SPECIFIED)

| | mm | INCH |
|----------|--------|-------|
| 4 PLACES | ± --- | ± --- |
| 3 PLACES | ± --- | ± --- |
| 2 PLACES | ± 0.20 | ± --- |
| 1 PLACE | ± --- | ± --- |
| 0 PLACE | ± --- | ± --- |

ANGULAR ± 3 °
DRAFT WHERE APPLICABLE
MUST REMAIN WITHIN DIMENSIONS

DIMENSION STYLE
MM ONLY

| DRAWN BY | DATE |
|-------------|------------|
| DB | 1987/07/16 |
| CHECKED BY | DATE |
| DB | 1987/07/16 |
| APPROVED BY | DATE |
| MLONG | 2012/02/24 |

MATERIAL NO.
SEE TABLE

SCALE
NTS

DESIGN UNITS
METRIC

THIRD ANGLE PROJECTION

TITLE
C GRID III DUAL ROW
STRAIGHT PIN HEADER

molex

DOCUMENT NO.
SD-90131-001

SHEET NO.
4 OF 8

THIS DRAWING CONTAINS INFORMATION THAT IS PROPRIETARY TO MOLEX INCORPORATED AND SHOULD NOT BE USED WITHOUT WRITTEN PERMISSION

| CIRCUIT SIZE | PLATING TYPE A PART NO. | PLATING TYPE E PART NO. | PLATING TYPE F PART NO. |
|--------------|-------------------------|-------------------------|-------------------------|
| 2 X 1 | 90131-0161 | 90131-0801 | 90131-0961 |
| 2 X 2 | ▲ -0162 | -0802 | ▲ -0962 |
| 2 X 3 | -0163 | -0803 | -0963 |
| 2 X 4 | -0164 | -0804 | -0964 |
| 2 X 5 | -0165 | -0805 | -0965 |
| 2 X 6 | -0166 | -0806 | -0966 |
| 2 X 7 | -0167 | -0807 | -0967 |
| 2 X 8 | -0168 | -0808 | -0968 |
| 2 X 9 | -0169 | -0809 | -0969 |
| 2 X 10 | -0170 | -0810 | -0970 |
| 2 X 11 | -0171 | -0811 | -0971 |
| 2 X 12 | -0172 | -0812 | -0972 |
| 2 X 13 | -0173 | -0813 | -0973 |
| 2 X 14 | -0174 | -0814 | -0974 |
| 2 X 15 | -0175 | -0815 | -0975 |
| 2 X 16 | -0176 | -0816 | -0976 |
| 2 X 17 | -0177 | -0817 | -0977 |
| 2 X 18 | -0178 | -0818 | -0978 |
| 2 X 19 | -0179 | -0819 | -0979 |
| 2 X 20 | -0180 | -0820 | -0980 |
| 2 X 21 | -0181 | -0821 | -0981 |
| 2 X 22 | -0182 | -0822 | -0982 |
| 2 X 23 | -0183 | -0823 | -0983 |
| 2 X 24 | -0184 | -0824 | -0984 |
| 2 X 25 | -0185 | -0825 | -0985 |
| 2 X 26 | -0186 | -0826 | -0986 |
| 2 X 27 | -0187 | -0827 | -0987 |
| 2 X 28 | -0188 | -0828 | -0988 |
| 2 X 29 | -0189 | -0829 | -0989 |
| 2 X 30 | -0190 | -0830 | -0990 |
| 2 X 31 | -0191 | -0831 | -0991 |
| 2 X 32 | -0192 | -0832 | -0992 |
| 2 X 33 | -0193 | -0833 | -0993 |
| 2 X 34 | -0194 | -0834 | -0994 |
| 2 X 35 | -0195 | -0835 | -0995 |
| 2 X 36 | -0196 | -0836 | -0996 |
| 2 X 37 | -0197 | -0837 | -0997 |
| 2 X 38 | -0198 | -0838 | -0998 |
| 2 X 39 | ▼ -0199 | -0839 | ▼ -0999 |
| 2 X 40 | 90131-0200 | 90131-0840 | 90131-1000 |

DIM C (±0.20) ±.008 (6.75) .266

DIM D (±0.25) ±.010 (4.50) .177

NON-STANDARD PRODUCTS

| | | | | | | |
|--|--|---------------------------------------|---|---|--------------|------------------------|
| ADD DATUM EC NO: S2017-0354 DRWN:FCS00 2016/12/13 CHKD:CGOH 2017/01/17 APPR:KHL JM 2017/01/18 | QUALITY SYMBOLS | GENERAL TOLERANCES (UNLESS SPECIFIED) | DIMENSION STYLE | SCALE | DESIGN UNITS | THIRD ANGLE PROJECTION |
| | $\nabla_A = 0$ $\nabla_C = 0$ $\nabla_F = 0$ | mm INCH | MM ONLY | NTS | METRIC | |
| | | 4 PLACES ± --- ± --- | DRAWN BY DATE | TITLE | | |
| | | 3 PLACES ± --- ± --- | DB 1987/07/16 | C GRID III DUAL ROW STRAIGHT PIN HEADER | | |
| | 2 PLACES ± 0.20 ± --- | CHECKED BY DATE | | | | |
| | 1 PLACE ± --- ± --- | DB 1987/07/16 | | | | |
| | 0 PLACE ± --- ± --- | APPROVED BY DATE | | | | |
| | ANGULAR ± 3 ° | MLONG 2012/02/24 | | | | |
| | DRAFT WHERE APPLICABLE MUST REMAIN WITHIN DIMENSIONS | MATERIAL NO. | SEE TABLE | | DOCUMENT NO. | |
| | | SIZE A3 | THIS DRAWING CONTAINS INFORMATION THAT IS PROPRIETARY TO MOLEX INCORPORATED AND SHOULD NOT BE USED WITHOUT WRITTEN PERMISSION | | | |
| | | | | | SD-90131-001 | SHEET NO. 5 OF 8 |

| | 10 | 9 | 8 | 7 | 6 | 5 | 4 | 3 | 2 | 1 | | |
|---|--------|--------------|-------------------------|-------------------------|-------------------------|-------------------------|--------|--------------|-------------------------|-------------------------|-------------------------|-------------------------|
| F | | CIRCUIT SIZE | PLATING TYPE B PART NO. | PLATING TYPE C PART NO. | PLATING TYPE D PART NO. | PLATING TYPE G PART NO. | | CIRCUIT SIZE | PLATING TYPE B PART NO. | PLATING TYPE C PART NO. | PLATING TYPE D PART NO. | PLATING TYPE G PART NO. |
| | | 2 X 1 | 90131-0281 | 90131-0441 | 90131-0601 | 90131-1081 | | 2 X 1 | 90131-0201 | 90131-0361 | 90131-0521 | 90131-1001 |
| | | 2 X 2 | ↑ -0282 | ↑ -0442 | ↑ -0602 | ↑ -1082 | | 2 X 2 | ↑ -0202 | ↑ -0362 | ↑ -0522 | ↑ -1002 |
| | | 2 X 3 | -0283 | -0443 | -0603 | -1083 | | 2 X 3 | -0203 | -0363 | -0523 | -1003 |
| | | 2 X 4 | -0284 | -0444 | -0604 | -1084 | | 2 X 4 | -0204 | -0364 | -0524 | -1004 |
| | | 2 X 5 | -0285 | -0445 | -0605 | -1085 | | 2 X 5 | -0205 | -0365 | -0525 | -1005 |
| | | 2 X 6 | -0286 | -0446 | -0606 | -1086 | | 2 X 6 | -0206 | -0366 | -0526 | -1006 |
| | | 2 X 7 | -0287 | -0447 | -0607 | -1087 | | 2 X 7 | -0207 | -0367 | -0527 | -1007 |
| | | 2 X 8 | -0288 | -0448 | -0608 | -1088 | | 2 X 8 | -0208 | -0368 | -0528 | -1008 |
| | | 2 X 9 | -0289 | -0449 | -0609 | -1089 | | 2 X 9 | -0209 | -0369 | -0529 | -1009 |
| | | 2 X 10 | -0290 | -0450 | -0610 | -1090 | | 2 X 10 | -0210 | -0370 | -0530 | -1010 |
| | | 2 X 11 | -0291 | -0451 | -0611 | -1091 | | 2 X 11 | -0211 | -0371 | -0531 | -1011 |
| | | 2 X 12 | -0292 | -0452 | -0612 | -1092 | | 2 X 12 | -0212 | -0372 | -0532 | -1012 |
| | | 2 X 13 | -0293 | -0453 | -0613 | -1093 | | 2 X 13 | -0213 | -0373 | -0533 | -1013 |
| | | 2 X 14 | -0294 | -0454 | -0614 | -1094 | | 2 X 14 | -0214 | -0374 | -0534 | -1014 |
| | | 2 X 15 | -0295 | -0455 | -0615 | -1095 | | 2 X 15 | -0215 | -0375 | -0535 | -1015 |
| | | 2 X 16 | -0296 | -0456 | -0616 | -1096 | | 2 X 16 | -0216 | -0376 | -0536 | -1016 |
| | | 2 X 17 | -0297 | -0457 | -0617 | -1097 | | 2 X 17 | -0217 | -0377 | -0537 | -1017 |
| | | 2 X 18 | -0298 | -0458 | -0618 | -1098 | | 2 X 18 | -0218 | -0378 | -0538 | -1018 |
| | | 2 X 19 | -0299 | -0459 | -0619 | -1099 | | 2 X 19 | -0219 | -0379 | -0539 | -1019 |
| | 2 X 20 | -0300 | -0460 | -0620 | -1100 | | 2 X 20 | -0220 | -0380 | -0540 | -1020 | |
| | 2 X 21 | -0301 | -0461 | -0621 | -1101 | | 2 X 21 | -0221 | -0381 | -0541 | -1021 | |
| | 2 X 22 | -0302 | -0462 | -0622 | -1102 | | 2 X 22 | -0222 | -0382 | -0542 | -1022 | |
| | 2 X 23 | -0303 | -0463 | -0623 | -1103 | | 2 X 23 | -0223 | -0383 | -0543 | -1023 | |
| | 2 X 24 | -0304 | -0464 | -0624 | -1104 | | 2 X 24 | -0224 | -0384 | -0544 | -1024 | |
| | 2 X 25 | -0305 | -0465 | -0625 | -1105 | | 2 X 25 | -0225 | -0385 | -0545 | -1025 | |
| | 2 X 26 | -0306 | -0466 | -0626 | -1106 | | 2 X 26 | -0226 | -0386 | -0546 | -1026 | |
| | 2 X 27 | -0307 | -0467 | -0627 | -1107 | | 2 X 27 | -0227 | -0387 | -0547 | -1027 | |
| | 2 X 28 | -0308 | -0468 | -0628 | -1108 | | 2 X 28 | -0228 | -0388 | -0548 | -1028 | |
| | 2 X 29 | -0309 | -0469 | -0629 | -1109 | | 2 X 29 | -0229 | -0389 | -0549 | -1029 | |
| | 2 X 30 | -0310 | -0470 | -0630 | -1110 | | 2 X 30 | -0230 | -0390 | -0550 | -1030 | |
| | 2 X 31 | -0311 | -0471 | -0631 | -1111 | | 2 X 31 | -0231 | -0391 | -0551 | -1031 | |
| | 2 X 32 | -0312 | -0472 | -0632 | -1112 | | 2 X 32 | -0232 | -0392 | -0552 | -1032 | |
| | 2 X 33 | -0313 | -0473 | -0633 | -1113 | | 2 X 33 | -0233 | -0393 | -0553 | -1033 | |
| | 2 X 34 | -0314 | -0474 | -0634 | -1114 | | 2 X 34 | -0234 | -0394 | -0554 | -1034 | |
| | 2 X 35 | -0315 | -0475 | -0635 | -1115 | | 2 X 35 | -0235 | -0395 | -0555 | -1035 | |
| | 2 X 36 | -0316 | -0476 | -0636 | -1116 | | 2 X 36 | -0236 | -0396 | -0556 | -1036 | |
| | 2 X 37 | -0317 | -0477 | -0637 | -1117 | | 2 X 37 | -0237 | -0397 | -0557 | -1037 | |
| | 2 X 38 | -0318 | -0478 | -0638 | -1118 | | 2 X 38 | -0238 | -0398 | -0558 | -1038 | |
| | 2 X 39 | ↓ -0319 | ↓ -0479 | ↓ -0639 | ↓ -1119 | | 2 X 39 | ↓ -0239 | ↓ -0399 | ↓ -0559 | ↓ -1039 | |
| | 2 X 40 | 90131-0320 | 90131-0480 | 90131-0640 | 90131-1120 | | 2 X 40 | 90131-0240 | 90131-0400 | 90131-0560 | 90131-1040 | |

DIM C (+0.20 / ±.008) (6.75) .266

DIM D (+0.20 / 0.30 / ±.008 / ±.012) (2.90) .114

DIM C (+0.20 / ±.008) (5.75) .226

DIM D (+0.20 / 0.30 / ±.008 / ±.012) (2.90) .114

**NON-STANDARD PRODUCTS
NOT FOR GENERAL RELEASE**

| | | | |
|--------------------|-------------|------------|-------------|
| ADD DATUM | 2016/12/13 | 2017/01/17 | 2017/01/18 |
| IEC NO: S2017-0354 | DRWN:FC500 | CHKD:G0H | APPR:KHL JM |
| REV | DESCRIPTION | | |

| | |
|-----------------|--|
| QUALITY SYMBOLS | GENERAL TOLERANCES (UNLESS SPECIFIED) |
| ▽=0 | 4 PLACES ± --- ± --- |
| ▽=0 | 3 PLACES ± --- ± --- |
| ▽=0 | 2 PLACES ± 0.20 ± --- |
| | 1 PLACE ± --- ± --- |
| | 0 PLACE ± --- ± --- |
| | ANGULAR ± 3 ° |
| | DRAFT WHERE APPLICABLE MUST REMAIN WITHIN DIMENSIONS |

| | | | | |
|-----------------|---|---|--------------|------------------------|
| DIMENSION STYLE | | SCALE | DESIGN UNITS | THIRD ANGLE PROJECTION |
| MM ONLY | | NTS | METRIC | |
| DRAWN BY | DATE | TITLE | | |
| DB | 1987/07/16 | C GRID III DUAL ROW STRAIGHT PIN HEADER | | |
| CHECKED BY | DATE | | | |
| DB | 1987/07/16 | | | |
| APPROVED BY | DATE | | | |
| MLONG | 2012/02/24 | | | |
| MATERIAL NO. | DOCUMENT NO. | | | |
| SEE TABLE | SD-90131-001 | | | |
| SIZE A3 | THIS DRAWING CONTAINS INFORMATION THAT IS PROPRIETARY TO MOLEX INCORPORATED AND SHOULD NOT BE USED WITHOUT WRITTEN PERMISSION | | | |

| | | | |
|--------------|---|--------------|---|
| SCALE | | DESIGN UNITS | THIRD ANGLE PROJECTION |
| NTS | | METRIC | |
| DRAWN BY | | DATE | TITLE |
| DB | | 1987/07/16 | C GRID III DUAL ROW STRAIGHT PIN HEADER |
| CHECKED BY | | DATE | |
| DB | | 1987/07/16 | |
| APPROVED BY | | DATE | |
| MLONG | | 2012/02/24 | |
| MATERIAL NO. | DOCUMENT NO. | | |
| SEE TABLE | SD-90131-001 | | |
| SIZE A3 | THIS DRAWING CONTAINS INFORMATION THAT IS PROPRIETARY TO MOLEX INCORPORATED AND SHOULD NOT BE USED WITHOUT WRITTEN PERMISSION | | |

molex

SD-90131-001 6 OF 8

| CIRCUIT SIZE | PLATING TYPE B PART NO. | PLATING TYPE C PART NO. | PLATING TYPE D PART NO. | PLATING TYPE G PART NO. |
|--------------|-------------------------|-------------------------|-------------------------|-------------------------|
| 2 X 1 | 90131-0241 | 90131-0401 | 90131-0561 | 90131-1041 |
| 2 X 2 | ▲ -0242 | ▲ -0402 | ▲ -0562 | ▲ -1042 |
| 2 X 3 | -0243 | -0403 | -0563 | -1043 |
| 2 X 4 | -0244 | -0404 | -0564 | -1044 |
| 2 X 5 | -0245 | -0405 | -0565 | -1045 |
| 2 X 6 | -0246 | -0406 | -0566 | -1046 |
| 2 X 7 | -0247 | -0407 | -0567 | -1047 |
| 2 X 8 | -0248 | -0408 | -0568 | -1048 |
| 2 X 9 | -0249 | -0409 | -0569 | -1049 |
| 2 X 10 | -0250 | -0410 | -0570 | -1050 |
| 2 X 11 | -0251 | -0411 | -0571 | -1051 |
| 2 X 12 | -0252 | -0412 | -0572 | -1052 |
| 2 X 13 | -0253 | -0413 | -0573 | -1053 |
| 2 X 14 | -0254 | -0414 | -0574 | -1054 |
| 2 X 15 | -0255 | -0415 | -0575 | -1055 |
| 2 X 16 | -0256 | -0416 | -0576 | -1056 |
| 2 X 17 | -0257 | -0417 | -0577 | -1057 |
| 2 X 18 | -0258 | -0418 | -0578 | -1058 |
| 2 X 19 | -0259 | -0419 | -0579 | -1059 |
| 2 X 20 | -0260 | -0420 | -0580 | -1060 |
| 2 X 21 | -0261 | -0421 | -0581 | -1061 |
| 2 X 22 | -0262 | -0422 | -0582 | -1062 |
| 2 X 23 | -0263 | -0423 | -0583 | -1063 |
| 2 X 24 | -0264 | -0424 | -0584 | -1064 |
| 2 X 25 | -0265 | -0425 | -0585 | -1065 |
| 2 X 26 | -0266 | -0426 | -0586 | -1066 |
| 2 X 27 | -0267 | -0427 | -0587 | -1067 |
| 2 X 28 | -0268 | -0428 | -0588 | -1068 |
| 2 X 29 | -0269 | -0429 | -0589 | -1069 |
| 2 X 30 | -0270 | -0430 | -0590 | -1070 |
| 2 X 31 | -0271 | -0431 | -0591 | -1071 |
| 2 X 32 | -0272 | -0432 | -0592 | -1072 |
| 2 X 33 | -0273 | -0433 | -0593 | -1073 |
| 2 X 34 | -0274 | -0434 | -0594 | -1074 |
| 2 X 35 | -0275 | -0435 | -0595 | -1075 |
| 2 X 36 | -0276 | -0436 | -0596 | -1076 |
| 2 X 37 | -0277 | -0437 | -0597 | -1077 |
| 2 X 38 | -0278 | -0438 | -0598 | -1078 |
| 2 X 39 | ▼ -0279 | ▼ -0439 | ▼ -0599 | ▼ -1079 |
| 2 X 40 | 90131-0280 | 90131-0440 | 90131-0600 | 90131-1080 |

DIM C (±0.20) ±.008 (5.75) .226

DIM D (±0.25) ±.010 (4.50) .177

| CIRCUIT SIZE | PLATING TYPE B PART NO. | PLATING TYPE C PART NO. | PLATING TYPE D PART NO. | PLATING TYPE G PART NO. |
|--------------|-------------------------|-------------------------|-------------------------|-------------------------|
| 2 X 1 | 90131-0321 | 90131-0481 | 90131-0641 | 90131-1121 |
| 2 X 2 | ▲ -0322 | ▲ -0482 | ▲ -0642 | ▲ -1122 |
| 2 X 3 | -0323 | -0483 | -0643 | -1123 |
| 2 X 4 | -0324 | -0484 | -0644 | -1124 |
| 2 X 5 | -0325 | -0485 | -0645 | -1125 |
| 2 X 6 | -0326 | -0486 | -0646 | -1126 |
| 2 X 7 | -0327 | -0487 | -0647 | -1127 |
| 2 X 8 | -0328 | -0488 | -0648 | -1128 |
| 2 X 9 | -0329 | -0489 | -0649 | -1129 |
| 2 X 10 | -0330 | -0490 | -0650 | -1130 |
| 2 X 11 | -0331 | -0491 | -0651 | -1131 |
| 2 X 12 | -0332 | -0492 | -0652 | -1132 |
| 2 X 13 | -0333 | -0493 | -0653 | -1133 |
| 2 X 14 | -0334 | -0494 | -0654 | -1134 |
| 2 X 15 | -0335 | -0495 | -0655 | -1135 |
| 2 X 16 | -0336 | -0496 | -0656 | -1136 |
| 2 X 17 | -0337 | -0497 | -0657 | -1137 |
| 2 X 18 | -0338 | -0498 | -0658 | -1138 |
| 2 X 19 | -0339 | -0499 | -0659 | -1139 |
| 2 X 20 | -0340 | -0500 | -0660 | -1140 |
| 2 X 21 | -0341 | -0501 | -0661 | -1141 |
| 2 X 22 | -0342 | -0502 | -0662 | -1142 |
| 2 X 23 | -0343 | -0503 | -0663 | -1143 |
| 2 X 24 | -0344 | -0504 | -0664 | -1144 |
| 2 X 25 | -0345 | -0505 | -0665 | -1145 |
| 2 X 26 | -0346 | -0506 | -0666 | -1146 |
| 2 X 27 | -0347 | -0507 | -0667 | -1147 |
| 2 X 28 | -0348 | -0508 | -0668 | -1148 |
| 2 X 29 | -0349 | -0509 | -0669 | -1149 |
| 2 X 30 | -0350 | -0510 | -0670 | -1150 |
| 2 X 31 | -0351 | -0511 | -0671 | -1151 |
| 2 X 32 | -0352 | -0512 | -0672 | -1152 |
| 2 X 33 | -0353 | -0513 | -0673 | -1153 |
| 2 X 34 | -0354 | -0514 | -0674 | -1154 |
| 2 X 35 | -0355 | -0515 | -0675 | -1155 |
| 2 X 36 | -0356 | -0516 | -0676 | -1156 |
| 2 X 37 | -0357 | -0517 | -0677 | -1157 |
| 2 X 38 | -0358 | -0518 | -0678 | -1158 |
| 2 X 39 | ▼ -0359 | ▼ -0519 | ▼ -0679 | ▼ -1159 |
| 2 X 40 | 90131-0360 | 90131-0520 | 90131-0680 | 90131-1160 |

DIM C (±0.20) ±.008 (6.75) .266

DIM D (±0.25) ±.010 (4.50) .177

**NON-STANDARD PRODUCTS
NOT FOR GENERAL RELEASE**

| | | |
|---|--|--------------------------------------|
| ADD DATUM EC NO: S2017-0354 DRWN:FC500 CHKD:CGOH APPR:KHLIM | 2016/12/13 2017/01/17 2017/01/18 | QUALITY SYMBOLS F=0 F=0 F=0 |
|---|--|--------------------------------------|

| GENERAL TOLERANCES (UNLESS SPECIFIED) | |
|--|-------|
| mm | INCH |
| 4 PLACES ± --- | ± --- |
| 3 PLACES ± --- | ± --- |
| 2 PLACES ± 0.20 | ± --- |
| 1 PLACE ± --- | ± --- |
| 0 PLACE ± --- | ± --- |
| ANGULAR ± 3° | |
| DRAFT WHERE APPLICABLE MUST REMAIN WITHIN DIMENSIONS | |

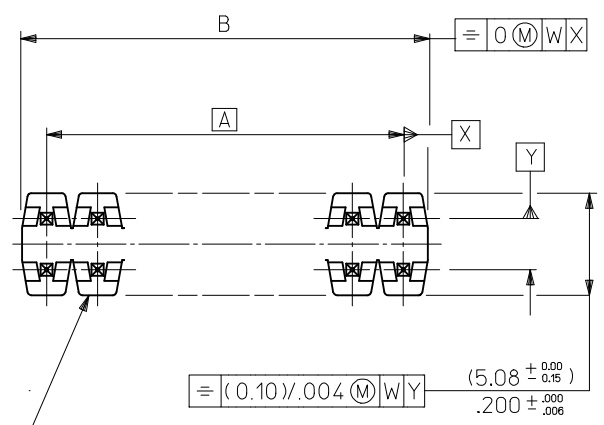
| DIMENSION STYLE MM ONLY | |
|----------------------------|--------------|
| DRAWN BY | DATE |
| DB | 1987/07/16 |
| CHECKED BY | DATE |
| DB | 1987/07/16 |
| APPROVED BY | DATE |
| MLONG | 2012/02/24 |
| MATERIAL NO. | DOCUMENT NO. |
| SEE TABLE | SD-90131-001 |

| | | |
|---|------------------------|------------------------|
| SCALE NTS | DESIGN UNITS METRIC | THIRD ANGLE PROJECTION |
| C GRID III DUAL ROW STRAIGHT PIN HEADER | | |
| molex | | |
| SHEET NO. 7 OF 8 | | |

| CIRCUIT SIZE | PLATING TYPE A PART NO. | PIN PART NUMBER | WAFER PART NUMBER | DIM C ^(±0.20) ±.008 | DIM D ^(±0.30) ±.008 -.012 |
|--------------|-------------------------|-----------------|-------------------|--------------------------------|---|
| 2 X 6 | 90131-3126 | 90129-2008 | 90131-0040 | (14.60) .575 | (2.38) .094 |
| 2 X 36 | 90131-3128 | 90129-2008 | 90131-0040 | (14.60) .575 | (2.38) .094 |
| 2 X 40 | 90131-3127 | 90129-2008 | 90131-0040 | (14.60) .575 | (2.38) .094 |

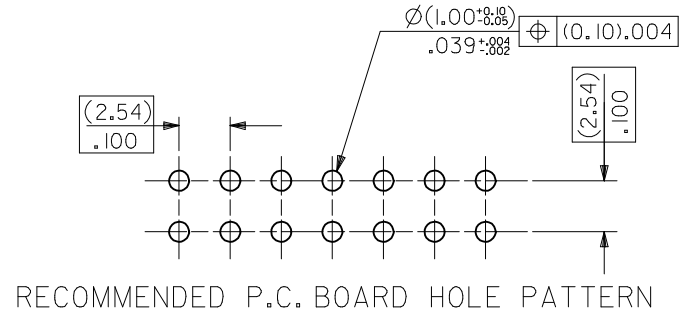
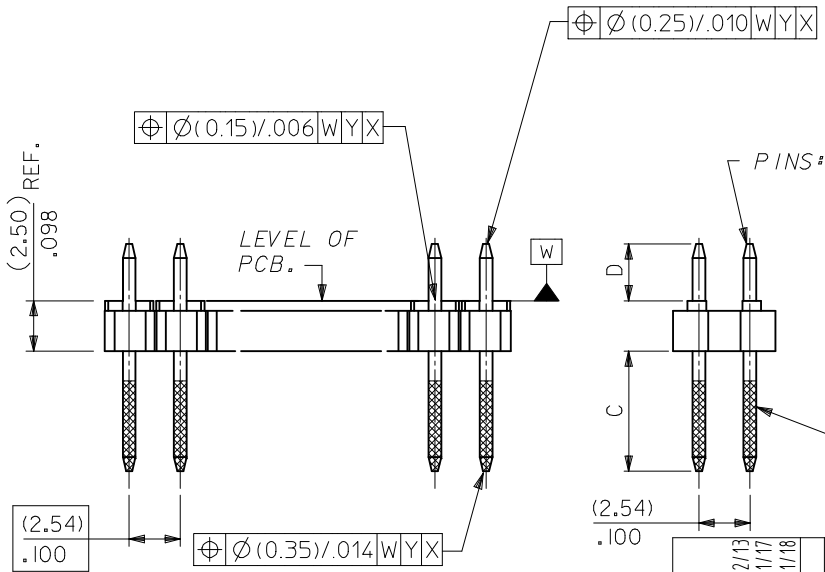
STANDARD PRODUCTS

| | | | | | | | | | | | | |
|---|--|--------------------|-----------------|--|---|-----------------------------------|------------|--|-------------------------------|------------------------|--|--|
| ADD DATUM EC NO: S2017-0354 DRWN:FC500 CHKD:CG0H APPR:KHLIM | 2016/12/13 2017/01/17 2017/01/18 | DESCRIPTION REV | QUALITY SYMBOLS | GENERAL TOLERANCES (UNLESS SPECIFIED) | | DIMENSION STYLE MM ONLY | | SCALE NTS | DESIGN UNITS METRIC | THIRD ANGLE PROJECTION | | |
| | | | ▽=0 | mm | INCH | DRAWN BY | DATE | TITLE C GRID III DUAL ROW STRAIGHT PIN HEADER | | | | |
| | | | ▽=0 | 4 PLACES ±--- | ±--- | DB | 1987/07/16 | | | | | |
| | | | ▽=0 | 3 PLACES ±--- | ±--- | CHECKED BY | DATE | molex DOCUMENT NO. SD-90131-001 SHEET NO. 8 OF 8 | | | | |
| ▽=0 | 2 PLACES ±0.20 | ±--- | DB | 1987/07/16 | | | | | | | | |
| | 1 PLACE ±--- | ±--- | APPROVED BY | DATE | THIS DRAWING CONTAINS INFORMATION THAT IS PROPRIETARY TO MOLEX INCORPORATED AND SHOULD NOT BE USED WITHOUT WRITTEN PERMISSION | | | | | | | |
| | 0 PLACE ±--- | ±--- | MLONG | 2012/02/24 | | | | | | | | |
| ANGULAR ± 3 ° | | | | DRAFT WHERE APPLICABLE MUST REMAIN WITHIN DIMENSIONS | | MATERIAL NO. SEE TABLE | | | | | | |
| | | | | SIZE A3 | | | | | | | | |



WAFER: 15% GLASS FILLED POLYESTER TO UL 94V-0. COLOUR: BLACK.

| CKT SIZE | DIM. "A" | | DIM. "B" (+0.20 / -0.008) | | CKT SIZE | DIM. "A" | | DIM. "B" (+0.20 / -0.008) | |
|----------|----------|-------|---------------------------|-------|----------|----------|-------|---------------------------|-------|
| 2X 1 | | | (2.54) | .100 | 2X21 | (50.80) | 2.000 | (53.34) | 2.100 |
| 2X 2 | (2.54) | .100 | (5.08) | .200 | 2X22 | (53.34) | 2.100 | (55.88) | 2.200 |
| 2X 3 | (5.08) | .200 | (7.62) | .300 | 2X23 | (55.88) | 2.200 | (58.42) | 2.300 |
| 2X 4 | (7.62) | .300 | (10.16) | .400 | 2X24 | (58.42) | 2.300 | (60.96) | 2.400 |
| 2X 5 | (10.16) | .400 | (12.70) | .500 | 2X25 | (60.96) | 2.400 | (63.50) | 2.500 |
| 2X 6 | (12.70) | .500 | (15.24) | .600 | 2X26 | (63.50) | 2.500 | (66.04) | 2.600 |
| 2X 7 | (15.24) | .600 | (17.78) | .700 | 2X27 | (66.04) | 2.600 | (68.58) | 2.700 |
| 2X 8 | (17.78) | .700 | (20.32) | .800 | 2X28 | (68.58) | 2.700 | (71.12) | 2.800 |
| 2X 9 | (20.32) | .800 | (22.86) | .900 | 2X29 | (71.12) | 2.800 | (73.66) | 2.900 |
| 2X10 | (22.86) | .900 | (25.40) | 1.000 | 2X30 | (73.66) | 2.900 | (76.20) | 3.000 |
| 2X11 | (25.40) | 1.000 | (27.94) | 1.100 | 2X31 | (76.20) | 3.000 | (78.74) | 3.100 |
| 2X12 | (27.94) | 1.100 | (30.48) | 1.200 | 2X32 | (78.74) | 3.100 | (81.28) | 3.200 |
| 2X13 | (30.48) | 1.200 | (33.02) | 1.300 | 2X33 | (81.28) | 3.200 | (83.82) | 3.300 |
| 2X14 | (33.02) | 1.300 | (35.56) | 1.400 | 2X34 | (83.82) | 3.300 | (86.36) | 3.400 |
| 2X15 | (35.56) | 1.400 | (38.10) | 1.500 | 2X35 | (86.36) | 3.400 | (88.90) | 3.500 |
| 2X16 | (38.10) | 1.500 | (40.64) | 1.600 | 2X36 | (88.90) | 3.500 | (91.44) | 3.600 |
| 2X17 | (40.64) | 1.600 | (43.18) | 1.700 | 2X37 | (91.44) | 3.600 | (93.98) | 3.700 |
| 2X18 | (43.18) | 1.700 | (45.72) | 1.800 | 2X38 | (93.98) | 3.700 | (96.52) | 3.800 |
| 2X19 | (45.72) | 1.800 | (48.26) | 1.900 | 2X39 | (96.52) | 3.800 | (99.06) | 3.900 |
| 2X20 | (48.26) | 1.900 | (50.80) | 2.000 | 2X40 | (99.06) | 3.900 | (101.60) | 4.000 |



- NOTES
- PLEASE REFER TO SHT 2 FOR PLATING DETAILS.
 - PLEASE REFER TO SHT 3-8 FOR DIMENSIONS C & D.
 - RECOMMENDED PCB THICKNESS 1.60MM
 - PRODUCT SPECIFICATION: PS-99020-0001

ADD DATUM
 EC NO: S2017-0354
 DRWN: FCS00
 CHKD: CG0H
 APPR: KHLIM
 2016/12/13
 2017/01/17
 2017/01/18

| QUALITY SYMBOLS | GENERAL TOLERANCES (UNLESS SPECIFIED) | |
|-----------------|--|-------|
| | mm | INCH |
| $F=0$ | 4 PLACES ± --- | ± --- |
| $F=0$ | 3 PLACES ± --- | ± --- |
| $F=0$ | 2 PLACES ± 0.20 | ± --- |
| | 1 PLACE ± --- | ± --- |
| | 0 PLACE ± --- | ± --- |
| | ANGULAR ± 3° | |
| | DRAFT WHERE APPLICABLE MUST REMAIN WITHIN DIMENSIONS | |

| DIMENSION STYLE | | SCALE | DESIGN UNITS | THIRD ANGLE PROJECTION |
|-----------------|--------------|---|--------------|------------------------|
| MM ONLY | | NTS | METRIC | |
| DRAWN BY | DATE | TITLE | | |
| DB | 1987/07/16 | C GRID III DUAL ROW STRAIGHT PIN HEADER | | |
| CHECKED BY | DATE | | | |
| DB | 1987/07/16 | | | |
| APPROVED BY | DATE | | | |
| MLONG | 2012/02/24 | | | |
| MATERIAL NO. | DOCUMENT NO. | | | |
| SEE TABLE | SD-90131-001 | | | |

molex

SHEET NO. 1 OF 8

THIS DRAWING CONTAINS INFORMATION THAT IS PROPRIETARY TO MOLEX INCORPORATED AND SHOULD NOT BE USED WITHOUT WRITTEN PERMISSION

| PLATING OPTIONS | PLATING DESCRIPTION |
|-----------------|---|
| A | 3.00µm MIN TIN OVER 1.27MIN NICKEL OVERALL |
| B | 0.38µm MIN GOLD IN SELECTED AREA AND 3.00µm MIN TIN IN SELECTED AREA AND 1.30µm MIN NICKEL OVERALL |
| C | 0.76µm MIN GOLD IN SELECTED AREA AND 3.00µm MIN TIN IN SELECTED AREA AND 1.30µm MIN NICKEL OVERALL |
| D | 0.05-0.10µm GOLD FLASH IN SELECTED AREA AND 3.00µm MIN TIN IN SELECTED AREA AND 1.30µm MIN NICKEL OVERALL |
| E | 0.38µm MIN GOLD IN SELECTED AREA (2 SIDES) AND 3.00µm MIN TIN IN SELECTED AREA AND 1.30µm MIN NICKEL OVERALL |
| F | 0.76µm MIN GOLD IN SELECTED AREA (2 SIDES) AND 3.00µm MIN TIN IN SELECTED AREA AND 1.30µm MIN NICKEL OVERALL |
| G | 0.05-0.10µm GOLD FLASH IN SELECTED AREA (2 SIDES) AND 3.00µm MIN TIN IN SELECTED AREA AND 1.30µm MIN NICKEL OVERALL |

| | | | | | | | | | |
|---|---|---------------------------------------|--|-----------------------------------|---------------------------|---|------------------------|------------------------|--|
| ADD DATUM EC NO: S2017-0354 DRWN: FCS00 2016/12/13 CHKD: G0H 2017/01/17 APPR: KHLIM 2017/01/18 | QUALITY SYMBOLS $\nabla = 0$ $\nabla = 0$ $\nabla = 0$ | GENERAL TOLERANCES (UNLESS SPECIFIED) | | DIMENSION STYLE MM ONLY | | SCALE NTS | DESIGN UNITS METRIC | THIRD ANGLE PROJECTION | |
| | | | | DRAWN BY DB | DATE 1987/07/16 | TITLE C GRID III DUAL ROW STRAIGHT PIN HEADER | | | |
| | | | | CHECKED BY DB | DATE 1987/07/16 | APPROVED BY MLONG | | | |
| | | | | DATE 2012/02/24 | MATERIAL NO. SEE TABLE | DOCUMENT NO. SD-90131-001 | SHEET NO. 2 OF 8 | | |
| DRAFT WHERE APPLICABLE MUST REMAIN WITHIN DIMENSIONS | | ANGULAR $\pm 3^\circ$ | | SIZE A3 | | THIS DRAWING CONTAINS INFORMATION THAT IS PROPRIETARY TO MOLEX INCORPORATED AND SHOULD NOT BE USED WITHOUT WRITTEN PERMISSION | | | |

| CIRCUIT SIZE | PLATING TYPE A PART NO. | PLATING TYPE E PART NO. | PLATING TYPE F PART NO. |
|--------------|----------------------------|----------------------------|----------------------------|
| 2 X 1 | 90131-0121 | 90131-0761 | 90131-0921 |
| 2 X 2 | ▲ -0122 | ▲ -0762 | ▲ -0922 |
| 2 X 3 | -0123 | -0763 | -0923 |
| 2 X 4 | -0124 | -0764 | -0924 |
| 2 X 5 | -0125 | -0765 | -0925 |
| 2 X 6 | -0126 | -0766 | -0926 |
| 2 X 7 | -0127 | -0767 | -0927 |
| 2 X 8 | -0128 | -0768 | -0928 |
| 2 X 9 | -0129 | -0769 | -0929 |
| 2 X 10 | -0130 | -0770 | -0930 |
| 2 X 11 | -0131 | -0771 | -0931 |
| 2 X 12 | -0132 | -0772 | -0932 |
| 2 X 13 | -0133 | -0773 | -0933 |
| 2 X 14 | -0134 | -0774 | -0934 |
| 2 X 15 | -0135 | -0775 | -0935 |
| 2 X 16 | -0136 | -0776 | -0936 |
| 2 X 17 | -0137 | -0777 | -0937 |
| 2 X 18 | -0138 | -0778 | -0938 |
| 2 X 19 | -0139 | -0779 | -0939 |
| 2 X 20 | -0140 | -0780 | -0940 |
| 2 X 21 | -0141 | -0781 | -0941 |
| 2 X 22 | -0142 | -0782 | -0942 |
| 2 X 23 | -0143 | -0783 | -0943 |
| 2 X 24 | -0144 | -0784 | -0944 |
| 2 X 25 | -0145 | -0785 | -0945 |
| 2 X 26 | -0146 | -0786 | -0946 |
| 2 X 27 | -0147 | -0787 | -0947 |
| 2 X 28 | -0148 | -0788 | -0948 |
| 2 X 29 | -0149 | -0789 | -0949 |
| 2 X 30 | -0150 | -0790 | -0950 |
| 2 X 31 | -0151 | -0791 | -0951 |
| 2 X 32 | -0152 | -0792 | -0952 |
| 2 X 33 | -0153 | -0793 | -0953 |
| 2 X 34 | -0154 | -0794 | -0954 |
| 2 X 35 | -0155 | -0795 | -0955 |
| 2 X 36 | -0156 | -0796 | -0956 |
| 2 X 37 | -0157 | -0797 | -0957 |
| 2 X 38 | -0158 | -0798 | -0958 |
| 2 X 39 | ▼ -0159 | ▼ -0799 | ▼ -0959 |
| 2 X 40 | 90131-0160 | 90131-0800 | 90131-0960 |

DIM
C (+0.20/-0.30)
±.008
(6.75)
.266

DIM
D (+0.20/-0.30)
±.008
(2.90)
.114

STANDARD PRODUCTS

| | | | | | | | | | | |
|---|--|--------------------|--|---|-----------------|--------------|--------------|--|-------|--|
| ADD DATUM EC NO: S2017-0354 DRWN: FCS00 CHKD: CGOH APPR: KHL IM | 2016/12/13 2017/01/17 2017/01/18 | DESCRIPTION REV | QUALITY SYMBOLS | GENERAL TOLERANCES (UNLESS SPECIFIED) | DIMENSION STYLE | SCALE | DESIGN UNITS | THIRD ANGLE PROJECTION | | |
| | | | $\nabla_F = 0$ $\nabla_E = 0$ $\nabla_B = 0$ | mm INCH 4 PLACES ± --- ± --- 3 PLACES ± --- ± --- 2 PLACES ± 0.20 ± --- 1 PLACE ± --- ± --- 0 PLACE ± --- ± --- | MM ONLY | NTS | METRIC | DRAWN BY: DB DATE: 1987/07/16 CHECKED BY: DB DATE: 1987/07/16 APPROVED BY: MLONG DATE: 2012/02/24 | TITLE | C GRID III DUAL ROW STRAIGHT PIN HEADER molex SD-90131-001 SHEET NO. 3 OF 8 |
| | | | ANGULAR ± 3° DRAFT WHERE APPLICABLE MUST REMAIN WITHIN DIMENSIONS | SEE TABLE | MATERIAL NO. | DOCUMENT NO. | | | | |
| | | | THIS DRAWING CONTAINS INFORMATION THAT IS PROPRIETARY TO MOLEX INCORPORATED AND SHOULD NOT BE USED WITHOUT WRITTEN PERMISSION | SIZE A3 | | | | | | |

| CIRCUIT SIZE | PLATING TYPE A PART NO. | PLATING TYPE E PART NO. | PLATING TYPE F PART NO. |
|--------------|-------------------------|-------------------------|-------------------------|
| 2 X 1 | 90131-0041 | 90131-0681 | 90131-0841 |
| 2 X 2 | ▲ -0042 | ▲ -0682 | ▲ -0842 |
| 2 X 3 | -0043 | -0683 | -0843 |
| 2 X 4 | -0044 | -0684 | -0844 |
| 2 X 5 | -0045 | -0685 | -0845 |
| 2 X 6 | -0046 | -0686 | -0846 |
| 2 X 7 | -0047 | -0687 | -0847 |
| 2 X 8 | -0048 | -0688 | -0848 |
| 2 X 9 | -0049 | -0689 | -0849 |
| 2 X 10 | -0050 | -0690 | -0850 |
| 2 X 11 | -0051 | -0691 | -0851 |
| 2 X 12 | -0052 | -0692 | -0852 |
| 2 X 13 | -0053 | -0693 | -0853 |
| 2 X 14 | -0054 | -0694 | -0854 |
| 2 X 15 | -0055 | -0695 | -0855 |
| 2 X 16 | -0056 | -0696 | -0856 |
| 2 X 17 | -0057 | -0697 | -0857 |
| 2 X 18 | -0058 | -0698 | -0858 |
| 2 X 19 | -0059 | -0699 | -0859 |
| 2 X 20 | -0060 | -0700 | -0860 |
| 2 X 21 | -0061 | -0701 | -0861 |
| 2 X 22 | -0062 | -0702 | -0862 |
| 2 X 23 | -0063 | -0703 | -0863 |
| 2 X 24 | -0064 | -0704 | -0864 |
| 2 X 25 | -0065 | -0705 | -0865 |
| 2 X 26 | -0066 | -0706 | -0866 |
| 2 X 27 | -0067 | -0707 | -0867 |
| 2 X 28 | -0068 | -0708 | -0868 |
| 2 X 29 | -0069 | -0709 | -0869 |
| 2 X 30 | -0070 | -0710 | -0870 |
| 2 X 31 | -0071 | -0711 | -0871 |
| 2 X 32 | -0072 | -0712 | -0872 |
| 2 X 33 | -0073 | -0713 | -0873 |
| 2 X 34 | -0074 | -0714 | -0874 |
| 2 X 35 | -0075 | -0715 | -0875 |
| 2 X 36 | -0076 | -0716 | -0876 |
| 2 X 37 | -0077 | -0717 | -0877 |
| 2 X 38 | -0078 | -0718 | -0878 |
| 2 X 39 | ▼ -0079 | ▼ -0719 | ▼ -0879 |
| 2 X 40 | 90131-0080 | 90131-0720 | 90131-0880 |

DIM C (+0.20 / ±.008) (5.75) .226

DIM D (+0.20 / ±.008 / ±.012) (2.90) .114

| CIRCUIT SIZE | PLATING TYPE A PART NO. | PLATING TYPE E PART NO. | PLATING TYPE F PART NO. |
|--------------|-------------------------|-------------------------|-------------------------|
| 2 X 1 | 90131-0081 | 90131-0721 | 90131-0881 |
| 2 X 2 | ▲ -0082 | ▲ -0722 | ▲ -0882 |
| 2 X 3 | -0083 | -0723 | -0883 |
| 2 X 4 | -0084 | -0724 | -0884 |
| 2 X 5 | -0085 | -0725 | -0885 |
| 2 X 6 | -0086 | -0726 | -0886 |
| 2 X 7 | -0087 | -0727 | -0887 |
| 2 X 8 | -0088 | -0728 | -0888 |
| 2 X 9 | -0089 | -0729 | -0889 |
| 2 X 10 | -0090 | -0730 | -0890 |
| 2 X 11 | -0091 | -0731 | -0891 |
| 2 X 12 | -0092 | -0732 | -0892 |
| 2 X 13 | -0093 | -0733 | -0893 |
| 2 X 14 | -0094 | -0734 | -0894 |
| 2 X 15 | -0095 | -0735 | -0895 |
| 2 X 16 | -0096 | -0736 | -0896 |
| 2 X 17 | -0097 | -0737 | -0897 |
| 2 X 18 | -0098 | -0738 | -0898 |
| 2 X 19 | -0099 | -0739 | -0899 |
| 2 X 20 | -0100 | -0740 | -0900 |
| 2 X 21 | -0101 | -0741 | -0901 |
| 2 X 22 | -0102 | -0742 | -0902 |
| 2 X 23 | -0103 | -0743 | -0903 |
| 2 X 24 | -0104 | -0744 | -0904 |
| 2 X 25 | -0105 | -0745 | -0905 |
| 2 X 26 | -0106 | -0746 | -0906 |
| 2 X 27 | -0107 | -0747 | -0907 |
| 2 X 28 | -0108 | -0748 | -0908 |
| 2 X 29 | -0109 | -0749 | -0909 |
| 2 X 30 | -0110 | -0750 | -0910 |
| 2 X 31 | -0111 | -0751 | -0911 |
| 2 X 32 | -0112 | -0752 | -0912 |
| 2 X 33 | -0113 | -0753 | -0913 |
| 2 X 34 | -0114 | -0754 | -0914 |
| 2 X 35 | -0115 | -0755 | -0915 |
| 2 X 36 | -0116 | -0756 | -0916 |
| 2 X 37 | -0117 | -0757 | -0917 |
| 2 X 38 | -0118 | -0758 | -0918 |
| 2 X 39 | ▼ -0119 | ▼ -0759 | ▼ -0919 |
| 2 X 40 | 90131-0120 | 90131-0760 | 90131-0920 |

DIM C (+0.20 / ±.008) (5.75) .226

DIM D (+0.25 / ±.010) (4.50) .177

NON-STANDARD PRODUCTS

ADD DATUM
EC NO: S2017-0354
2016/12/13
DRWN:FC500
CHKD:GGH
2017/01/17
APPR:KHLIM
2017/01/18

QUALITY SYMBOLS
FA=0
FG=0
FB=0

GENERAL TOLERANCES (UNLESS SPECIFIED)

| | mm | INCH |
|----------|--------|-------|
| 4 PLACES | ± --- | ± --- |
| 3 PLACES | ± --- | ± --- |
| 2 PLACES | ± 0.20 | ± --- |
| 1 PLACE | ± --- | ± --- |
| 0 PLACE | ± --- | ± --- |

ANGULAR ± 3 °
DRAFT WHERE APPLICABLE
MUST REMAIN WITHIN DIMENSIONS

DIMENSION STYLE
MM ONLY

| DRAWN BY | DATE |
|-------------|------------|
| DB | 1987/07/16 |
| CHECKED BY | DATE |
| DB | 1987/07/16 |
| APPROVED BY | DATE |
| MLONG | 2012/02/24 |

MATERIAL NO.
SEE TABLE

SCALE
NTS

DESIGN UNITS
METRIC

THIRD ANGLE PROJECTION

TITLE
C GRID III DUAL ROW STRAIGHT PIN HEADER

molex

DOCUMENT NO.
SD-90131-001

SHEET NO.
4 OF 8

THIS DRAWING CONTAINS INFORMATION THAT IS PROPRIETARY TO MOLEX INCORPORATED AND SHOULD NOT BE USED WITHOUT WRITTEN PERMISSION

| CIRCUIT SIZE | PLATING TYPE A PART NO. | PLATING TYPE E PART NO. | PLATING TYPE F PART NO. |
|--------------|-------------------------|-------------------------|-------------------------|
| 2 X 1 | 90131-0161 | 90131-0801 | 90131-0961 |
| 2 X 2 | ▲ -0162 | -0802 | ▲ -0962 |
| 2 X 3 | -0163 | -0803 | -0963 |
| 2 X 4 | -0164 | -0804 | -0964 |
| 2 X 5 | -0165 | -0805 | -0965 |
| 2 X 6 | -0166 | -0806 | -0966 |
| 2 X 7 | -0167 | -0807 | -0967 |
| 2 X 8 | -0168 | -0808 | -0968 |
| 2 X 9 | -0169 | -0809 | -0969 |
| 2 X 10 | -0170 | -0810 | -0970 |
| 2 X 11 | -0171 | -0811 | -0971 |
| 2 X 12 | -0172 | -0812 | -0972 |
| 2 X 13 | -0173 | -0813 | -0973 |
| 2 X 14 | -0174 | -0814 | -0974 |
| 2 X 15 | -0175 | -0815 | -0975 |
| 2 X 16 | -0176 | -0816 | -0976 |
| 2 X 17 | -0177 | -0817 | -0977 |
| 2 X 18 | -0178 | -0818 | -0978 |
| 2 X 19 | -0179 | -0819 | -0979 |
| 2 X 20 | -0180 | -0820 | -0980 |
| 2 X 21 | -0181 | -0821 | -0981 |
| 2 X 22 | -0182 | -0822 | -0982 |
| 2 X 23 | -0183 | -0823 | -0983 |
| 2 X 24 | -0184 | -0824 | -0984 |
| 2 X 25 | -0185 | -0825 | -0985 |
| 2 X 26 | -0186 | -0826 | -0986 |
| 2 X 27 | -0187 | -0827 | -0987 |
| 2 X 28 | -0188 | -0828 | -0988 |
| 2 X 29 | -0189 | -0829 | -0989 |
| 2 X 30 | -0190 | -0830 | -0990 |
| 2 X 31 | -0191 | -0831 | -0991 |
| 2 X 32 | -0192 | -0832 | -0992 |
| 2 X 33 | -0193 | -0833 | -0993 |
| 2 X 34 | -0194 | -0834 | -0994 |
| 2 X 35 | -0195 | -0835 | -0995 |
| 2 X 36 | -0196 | -0836 | -0996 |
| 2 X 37 | -0197 | -0837 | -0997 |
| 2 X 38 | -0198 | -0838 | -0998 |
| 2 X 39 | ▼ -0199 | -0839 | ▼ -0999 |
| 2 X 40 | 90131-0200 | 90131-0840 | 90131-1000 |

DIM C (±0.20) ±.008 (6.75) .266

DIM D (±0.25) ±.010 (4.50) .177

NON-STANDARD PRODUCTS

| | | | | | | |
|--|--|---------------------------------------|---|---|--------------|------------------------|
| ADD DATUM EC NO: S2017-0354 DRWN:FC500 2016/12/13 CHKD:CGOH 2017/01/17 APPR:KHL JM 2017/01/18 | QUALITY SYMBOLS | GENERAL TOLERANCES (UNLESS SPECIFIED) | DIMENSION STYLE | SCALE | DESIGN UNITS | THIRD ANGLE PROJECTION |
| | $\nabla_A = 0$ $\nabla_C = 0$ $\nabla_F = 0$ | mm INCH | MM ONLY | NTS | METRIC | |
| | | 4 PLACES ± --- ± --- | DRAWN BY DATE | TITLE | | |
| | | 3 PLACES ± --- ± --- | DB 1987/07/16 | C GRID III DUAL ROW STRAIGHT PIN HEADER | | |
| | 2 PLACES ± 0.20 ± --- | CHECKED BY DATE | | | | |
| | 1 PLACE ± --- ± --- | DB 1987/07/16 | | | | |
| | 0 PLACE ± --- ± --- | APPROVED BY DATE | | | | |
| | ANGULAR ± 3 ° | MLONG 2012/02/24 | | | | |
| | DRAFT WHERE APPLICABLE MUST REMAIN WITHIN DIMENSIONS | MATERIAL NO. | SEE TABLE | | DOCUMENT NO. | |
| | | SIZE A3 | THIS DRAWING CONTAINS INFORMATION THAT IS PROPRIETARY TO MOLEX INCORPORATED AND SHOULD NOT BE USED WITHOUT WRITTEN PERMISSION | | | |
| | | | | | SD-90131-001 | SHEET NO. 5 OF 8 |

| | 10 | 9 | 8 | 7 | 6 | 5 | 4 | 3 | 2 | 1 | | | |
|--------|-----------------------------------|---|-------------------------|-------------------------|-------------------------|-------------------------|--------------|-------------------------|-------------------------|-------------------------|-------------------------|-------|--|
| F | | CIRCUIT SIZE | PLATING TYPE B PART NO. | PLATING TYPE C PART NO. | PLATING TYPE D PART NO. | PLATING TYPE G PART NO. | CIRCUIT SIZE | PLATING TYPE B PART NO. | PLATING TYPE C PART NO. | PLATING TYPE D PART NO. | PLATING TYPE G PART NO. | | |
| | | 2 X 1 | 90131-0281 | 90131-0441 | 90131-0601 | 90131-1081 | 2 X 1 | 90131-0201 | 90131-0361 | 90131-0521 | 90131-1001 | | |
| E | DIM C (+0.20 / -0.08) (6.75) .266 | 2 X 2 | ↑ -0282 | ↑ -0442 | ↑ -0602 | ↑ -1082 | 2 X 2 | ↑ -0202 | ↑ -0362 | ↑ -0522 | ↑ -1002 | | |
| | | 2 X 3 | -0283 | -0443 | -0603 | -1083 | 2 X 3 | -0203 | -0363 | -0523 | -1003 | | |
| | | 2 X 4 | -0284 | -0444 | -0604 | -1084 | 2 X 4 | -0204 | -0364 | -0524 | -1004 | | |
| | | 2 X 5 | -0285 | -0445 | -0605 | -1085 | 2 X 5 | -0205 | -0365 | -0525 | -1005 | | |
| | | 2 X 6 | -0286 | -0446 | -0606 | -1086 | 2 X 6 | -0206 | -0366 | -0526 | -1006 | | |
| | | 2 X 7 | -0287 | -0447 | -0607 | -1087 | 2 X 7 | -0207 | -0367 | -0527 | -1007 | | |
| | | 2 X 8 | -0288 | -0448 | -0608 | -1088 | 2 X 8 | -0208 | -0368 | -0528 | -1008 | | |
| | | 2 X 9 | -0289 | -0449 | -0609 | -1089 | 2 X 9 | -0209 | -0369 | -0529 | -1009 | | |
| | | 2 X 10 | -0290 | -0450 | -0610 | -1090 | 2 X 10 | -0210 | -0370 | -0530 | -1010 | | |
| | | 2 X 11 | -0291 | -0451 | -0611 | -1091 | 2 X 11 | -0211 | -0371 | -0531 | -1011 | | |
| | 2 X 12 | -0292 | -0452 | -0612 | -1092 | 2 X 12 | -0212 | -0372 | -0532 | -1012 | | | |
| | 2 X 13 | -0293 | -0453 | -0613 | -1093 | 2 X 13 | -0213 | -0373 | -0533 | -1013 | | | |
| | 2 X 14 | -0294 | -0454 | -0614 | -1094 | 2 X 14 | -0214 | -0374 | -0534 | -1014 | | | |
| | 2 X 15 | -0295 | -0455 | -0615 | -1095 | 2 X 15 | -0215 | -0375 | -0535 | -1015 | | | |
| | 2 X 16 | -0296 | -0456 | -0616 | -1096 | 2 X 16 | -0216 | -0376 | -0536 | -1016 | | | |
| | 2 X 17 | -0297 | -0457 | -0617 | -1097 | 2 X 17 | -0217 | -0377 | -0537 | -1017 | | | |
| | 2 X 18 | -0298 | -0458 | -0618 | -1098 | 2 X 18 | -0218 | -0378 | -0538 | -1018 | | | |
| | 2 X 19 | -0299 | -0459 | -0619 | -1099 | 2 X 19 | -0219 | -0379 | -0539 | -1019 | | | |
| | D | DIM D (+0.20 / -0.30) (+0.08 / -0.02) (2.90) .114 | 2 X 20 | -0300 | -0460 | -0620 | -1100 | 2 X 20 | -0220 | -0380 | -0540 | -1020 | |
| | | | 2 X 21 | -0301 | -0461 | -0621 | -1101 | 2 X 21 | -0221 | -0381 | -0541 | -1021 | |
| 2 X 22 | | | -0302 | -0462 | -0622 | -1102 | 2 X 22 | -0222 | -0382 | -0542 | -1022 | | |
| 2 X 23 | | | -0303 | -0463 | -0623 | -1103 | 2 X 23 | -0223 | -0383 | -0543 | -1023 | | |
| 2 X 24 | | | -0304 | -0464 | -0624 | -1104 | 2 X 24 | -0224 | -0384 | -0544 | -1024 | | |
| 2 X 25 | | | -0305 | -0465 | -0625 | -1105 | 2 X 25 | -0225 | -0385 | -0545 | -1025 | | |
| 2 X 26 | | | -0306 | -0466 | -0626 | -1106 | 2 X 26 | -0226 | -0386 | -0546 | -1026 | | |
| 2 X 27 | | | -0307 | -0467 | -0627 | -1107 | 2 X 27 | -0227 | -0387 | -0547 | -1027 | | |
| 2 X 28 | | | -0308 | -0468 | -0628 | -1108 | 2 X 28 | -0228 | -0388 | -0548 | -1028 | | |
| 2 X 29 | | | -0309 | -0469 | -0629 | -1109 | 2 X 29 | -0229 | -0389 | -0549 | -1029 | | |
| C | | 2 X 30 | -0310 | -0470 | -0630 | -1110 | 2 X 30 | -0230 | -0390 | -0550 | -1030 | | |
| | | 2 X 31 | -0311 | -0471 | -0631 | -1111 | 2 X 31 | -0231 | -0391 | -0551 | -1031 | | |
| | | 2 X 32 | -0312 | -0472 | -0632 | -1112 | 2 X 32 | -0232 | -0392 | -0552 | -1032 | | |
| | | 2 X 33 | -0313 | -0473 | -0633 | -1113 | 2 X 33 | -0233 | -0393 | -0553 | -1033 | | |
| | | 2 X 34 | -0314 | -0474 | -0634 | -1114 | 2 X 34 | -0234 | -0394 | -0554 | -1034 | | |
| | | 2 X 35 | -0315 | -0475 | -0635 | -1115 | 2 X 35 | -0235 | -0395 | -0555 | -1035 | | |
| | | 2 X 36 | -0316 | -0476 | -0636 | -1116 | 2 X 36 | -0236 | -0396 | -0556 | -1036 | | |
| | | 2 X 37 | -0317 | -0477 | -0637 | -1117 | 2 X 37 | -0237 | -0397 | -0557 | -1037 | | |
| | | 2 X 38 | -0318 | -0478 | -0638 | -1118 | 2 X 38 | -0238 | -0398 | -0558 | -1038 | | |
| | | 2 X 39 | ↓ -0319 | ↓ -0479 | ↓ -0639 | ↓ -1119 | 2 X 39 | ↓ -0239 | ↓ -0399 | ↓ -0559 | ↓ -1039 | | |
| B | | 2 X 40 | 90131-0320 | 90131-0480 | 90131-0640 | 90131-1120 | 2 X 40 | 90131-0240 | 90131-0400 | 90131-0560 | 90131-1040 | | |

DIM C (+0.20 / -0.08) (6.75) .266

DIM D (+0.20 / -0.30) (+0.08 / -0.02) (2.90) .114

DIM C (+0.20 / -0.08) (5.75) .226

DIM D (+0.20 / -0.30) (+0.08 / -0.02) (2.90) .114

**NON-STANDARD PRODUCTS
NOT FOR GENERAL RELEASE**

| | | | |
|--------------------|------------|------------|-------------|
| ADD DATUM | 2016/12/13 | 2017/01/17 | 2017/01/18 |
| IEC NO: S2017-0354 | DRWN:FC500 | CHKD:G0H | APPR:KHL JM |
| DESCRIPTION | REV | | |

| | | | |
|--|--------|-------|-----|
| QUALITY SYMBOLS | ▽=0 | ▽=0 | ▽=0 |
| | ▽=0 | ▽=0 | ▽=0 |
| GENERAL TOLERANCES (UNLESS SPECIFIED) | mm | INCH | |
| 4 PLACES | ± --- | ± --- | |
| 3 PLACES | ± --- | ± --- | |
| 2 PLACES | ± 0.20 | ± --- | |
| 1 PLACE | ± --- | ± --- | |
| 0 PLACE | ± --- | ± --- | |
| ANGULAR ± 3 ° | | | |
| DRAFT WHERE APPLICABLE MUST REMAIN WITHIN DIMENSIONS | | | |

| | | | | |
|-----------------|---|---|--------------|------------------------|
| DIMENSION STYLE | | SCALE | DESIGN UNITS | THIRD ANGLE PROJECTION |
| MM ONLY | | NTS | METRIC | |
| DRAWN BY | DATE | TITLE | | |
| DB | 1987/07/16 | C GRID III DUAL ROW STRAIGHT PIN HEADER | | |
| CHECKED BY | DATE | | | |
| DB | 1987/07/16 | | | |
| APPROVED BY | DATE | | | |
| MLONG | 2012/02/24 | | | |
| MATERIAL NO. | DOCUMENT NO. | | | |
| SEE TABLE | SD-90131-001 | | | |
| SIZE A3 | THIS DRAWING CONTAINS INFORMATION THAT IS PROPRIETARY TO MOLEX INCORPORATED AND SHOULD NOT BE USED WITHOUT WRITTEN PERMISSION | | | |

| | | | |
|--------------|---|--------------|---|
| SCALE | | DESIGN UNITS | THIRD ANGLE PROJECTION |
| NTS | | METRIC | |
| DRAWN BY | | DATE | TITLE |
| DB | | 1987/07/16 | C GRID III DUAL ROW STRAIGHT PIN HEADER |
| CHECKED BY | | DATE | |
| DB | | 1987/07/16 | |
| APPROVED BY | | DATE | |
| MLONG | | 2012/02/24 | |
| MATERIAL NO. | DOCUMENT NO. | | |
| SEE TABLE | SD-90131-001 | | |
| SIZE A3 | THIS DRAWING CONTAINS INFORMATION THAT IS PROPRIETARY TO MOLEX INCORPORATED AND SHOULD NOT BE USED WITHOUT WRITTEN PERMISSION | | |

molex

SD-90131-001 6 OF 8

| CIRCUIT SIZE | PLATING TYPE B PART NO. | PLATING TYPE C PART NO. | PLATING TYPE D PART NO. | PLATING TYPE G PART NO. |
|--------------|-------------------------|-------------------------|-------------------------|-------------------------|
| 2 X 1 | 90131-0241 | 90131-0401 | 90131-0561 | 90131-1041 |
| 2 X 2 | ▲ -0242 | ▲ -0402 | ▲ -0562 | ▲ -1042 |
| 2 X 3 | -0243 | -0403 | -0563 | -1043 |
| 2 X 4 | -0244 | -0404 | -0564 | -1044 |
| 2 X 5 | -0245 | -0405 | -0565 | -1045 |
| 2 X 6 | -0246 | -0406 | -0566 | -1046 |
| 2 X 7 | -0247 | -0407 | -0567 | -1047 |
| 2 X 8 | -0248 | -0408 | -0568 | -1048 |
| 2 X 9 | -0249 | -0409 | -0569 | -1049 |
| 2 X 10 | -0250 | -0410 | -0570 | -1050 |
| 2 X 11 | -0251 | -0411 | -0571 | -1051 |
| 2 X 12 | -0252 | -0412 | -0572 | -1052 |
| 2 X 13 | -0253 | -0413 | -0573 | -1053 |
| 2 X 14 | -0254 | -0414 | -0574 | -1054 |
| 2 X 15 | -0255 | -0415 | -0575 | -1055 |
| 2 X 16 | -0256 | -0416 | -0576 | -1056 |
| 2 X 17 | -0257 | -0417 | -0577 | -1057 |
| 2 X 18 | -0258 | -0418 | -0578 | -1058 |
| 2 X 19 | -0259 | -0419 | -0579 | -1059 |
| 2 X 20 | -0260 | -0420 | -0580 | -1060 |
| 2 X 21 | -0261 | -0421 | -0581 | -1061 |
| 2 X 22 | -0262 | -0422 | -0582 | -1062 |
| 2 X 23 | -0263 | -0423 | -0583 | -1063 |
| 2 X 24 | -0264 | -0424 | -0584 | -1064 |
| 2 X 25 | -0265 | -0425 | -0585 | -1065 |
| 2 X 26 | -0266 | -0426 | -0586 | -1066 |
| 2 X 27 | -0267 | -0427 | -0587 | -1067 |
| 2 X 28 | -0268 | -0428 | -0588 | -1068 |
| 2 X 29 | -0269 | -0429 | -0589 | -1069 |
| 2 X 30 | -0270 | -0430 | -0590 | -1070 |
| 2 X 31 | -0271 | -0431 | -0591 | -1071 |
| 2 X 32 | -0272 | -0432 | -0592 | -1072 |
| 2 X 33 | -0273 | -0433 | -0593 | -1073 |
| 2 X 34 | -0274 | -0434 | -0594 | -1074 |
| 2 X 35 | -0275 | -0435 | -0595 | -1075 |
| 2 X 36 | -0276 | -0436 | -0596 | -1076 |
| 2 X 37 | -0277 | -0437 | -0597 | -1077 |
| 2 X 38 | -0278 | -0438 | -0598 | -1078 |
| 2 X 39 | ▼ -0279 | ▼ -0439 | ▼ -0599 | ▼ -1079 |
| 2 X 40 | 90131-0280 | 90131-0440 | 90131-0600 | 90131-1080 |

DIM C (±0.20) ±.008 (5.75) .226

DIM D (±0.25) ±.010 (4.50) .177

| CIRCUIT SIZE | PLATING TYPE B PART NO. | PLATING TYPE C PART NO. | PLATING TYPE D PART NO. | PLATING TYPE G PART NO. |
|--------------|-------------------------|-------------------------|-------------------------|-------------------------|
| 2 X 1 | 90131-0321 | 90131-0481 | 90131-0641 | 90131-1121 |
| 2 X 2 | ▲ -0322 | ▲ -0482 | ▲ -0642 | ▲ -1122 |
| 2 X 3 | -0323 | -0483 | -0643 | -1123 |
| 2 X 4 | -0324 | -0484 | -0644 | -1124 |
| 2 X 5 | -0325 | -0485 | -0645 | -1125 |
| 2 X 6 | -0326 | -0486 | -0646 | -1126 |
| 2 X 7 | -0327 | -0487 | -0647 | -1127 |
| 2 X 8 | -0328 | -0488 | -0648 | -1128 |
| 2 X 9 | -0329 | -0489 | -0649 | -1129 |
| 2 X 10 | -0330 | -0490 | -0650 | -1130 |
| 2 X 11 | -0331 | -0491 | -0651 | -1131 |
| 2 X 12 | -0332 | -0492 | -0652 | -1132 |
| 2 X 13 | -0333 | -0493 | -0653 | -1133 |
| 2 X 14 | -0334 | -0494 | -0654 | -1134 |
| 2 X 15 | -0335 | -0495 | -0655 | -1135 |
| 2 X 16 | -0336 | -0496 | -0656 | -1136 |
| 2 X 17 | -0337 | -0497 | -0657 | -1137 |
| 2 X 18 | -0338 | -0498 | -0658 | -1138 |
| 2 X 19 | -0339 | -0499 | -0659 | -1139 |
| 2 X 20 | -0340 | -0500 | -0660 | -1140 |
| 2 X 21 | -0341 | -0501 | -0661 | -1141 |
| 2 X 22 | -0342 | -0502 | -0662 | -1142 |
| 2 X 23 | -0343 | -0503 | -0663 | -1143 |
| 2 X 24 | -0344 | -0504 | -0664 | -1144 |
| 2 X 25 | -0345 | -0505 | -0665 | -1145 |
| 2 X 26 | -0346 | -0506 | -0666 | -1146 |
| 2 X 27 | -0347 | -0507 | -0667 | -1147 |
| 2 X 28 | -0348 | -0508 | -0668 | -1148 |
| 2 X 29 | -0349 | -0509 | -0669 | -1149 |
| 2 X 30 | -0350 | -0510 | -0670 | -1150 |
| 2 X 31 | -0351 | -0511 | -0671 | -1151 |
| 2 X 32 | -0352 | -0512 | -0672 | -1152 |
| 2 X 33 | -0353 | -0513 | -0673 | -1153 |
| 2 X 34 | -0354 | -0514 | -0674 | -1154 |
| 2 X 35 | -0355 | -0515 | -0675 | -1155 |
| 2 X 36 | -0356 | -0516 | -0676 | -1156 |
| 2 X 37 | -0357 | -0517 | -0677 | -1157 |
| 2 X 38 | -0358 | -0518 | -0678 | -1158 |
| 2 X 39 | ▼ -0359 | ▼ -0519 | ▼ -0679 | ▼ -1159 |
| 2 X 40 | 90131-0360 | 90131-0520 | 90131-0680 | 90131-1160 |

DIM C (±0.20) ±.008 (6.75) .266

DIM D (±0.25) ±.010 (4.50) .177

**NON-STANDARD PRODUCTS
NOT FOR GENERAL RELEASE**

| | | | |
|--|--|-------------|-----|
| ADD DATUM EC NO: S2017-0354 DRWN:FC00 CHKD:CG0H APPR:KHLIM | 2016/12/13 2017/01/17 2017/01/18 | DESCRIPTION | REV |
|--|--|-------------|-----|

| QUALITY SYMBOLS | GENERAL TOLERANCES (UNLESS SPECIFIED) | |
|-----------------|--|-------|
| | mm | INCH |
| ▽=0 | 4 PLACES ± --- | ± --- |
| ▽=0 | 3 PLACES ± --- | ± --- |
| ▽=0 | 2 PLACES ± 0.20 | ± --- |
| | 1 PLACE ± --- | ± --- |
| | 0 PLACE ± --- | ± --- |
| | ANGULAR ± 3° | |
| | DRAFT WHERE APPLICABLE MUST REMAIN WITHIN DIMENSIONS | |

| DIMENSION STYLE | | SCALE | DESIGN UNITS | THIRD ANGLE PROJECTION |
|-----------------|--------------|---|--------------|------------------------|
| MM ONLY | | NTS | METRIC | |
| DRAWN BY | DATE | TITLE | | |
| DB | 1987/07/16 | C GRID III DUAL ROW STRAIGHT PIN HEADER | | |
| CHECKED BY | DATE | | | |
| DB | 1987/07/16 | | | |
| APPROVED BY | DATE | | | |
| MLONG | 2012/02/24 | | | |
| MATERIAL NO. | DOCUMENT NO. | SHEET NO. | | |
| SEE TABLE | SD-90131-001 | 7 OF 8 | | |

molex

THIS DRAWING CONTAINS INFORMATION THAT IS PROPRIETARY TO MOLEX INCORPORATED AND SHOULD NOT BE USED WITHOUT WRITTEN PERMISSION

| CIRCUIT SIZE | PLATING TYPE A PART NO. | PIN PART NUMBER | WAFER PART NUMBER | DIM C ^(±0.20) ±.008 | DIM D ^(±0.30) ±.008 -.012 |
|--------------|-------------------------|-----------------|-------------------|--------------------------------|---|
| 2 X 6 | 90131-3126 | 90129-2008 | 90131-0040 | (14.60) .575 | (2.38) .094 |
| 2 X 36 | 90131-3128 | 90129-2008 | 90131-0040 | (14.60) .575 | (2.38) .094 |
| 2 X 40 | 90131-3127 | 90129-2008 | 90131-0040 | (14.60) .575 | (2.38) .094 |

STANDARD PRODUCTS

| | | | | | | | | | | | | |
|---|--|--------------------|-----------------|--|---|-----------------------------------|------------|--|------------------------|------------------------|--|--|
| ADD DATUM EC NO: S2017-0354 DRWN:FC500 CHKD:CGOH APPR:KHLIM | 2016/12/13 2017/01/17 2017/01/18 | DESCRIPTION REV | QUALITY SYMBOLS | GENERAL TOLERANCES (UNLESS SPECIFIED) | | DIMENSION STYLE MM ONLY | | SCALE NTS | DESIGN UNITS METRIC | THIRD ANGLE PROJECTION | | |
| | | | ▽=0 | mm | INCH | DRAWN BY | DATE | TITLE C GRID III DUAL ROW STRAIGHT PIN HEADER | | | | |
| | | | ▽=0 | 4 PLACES ±--- | ±--- | DB | 1987/07/16 | | | | | |
| | | | ▽=0 | 3 PLACES ±--- | ±--- | CHECKED BY | DATE | <div style="text-align: center; font-weight: bold; font-size: 1.2em;">molex</div> DOCUMENT NO. SD-90131-001 SHEET NO. 8 OF 8 | | | | |
| ▽=0 | 2 PLACES ±0.20 | ±--- | DB | 1987/07/16 | | | | | | | | |
| | 1 PLACE ±--- | ±--- | APPROVED BY | DATE | THIS DRAWING CONTAINS INFORMATION THAT IS PROPRIETARY TO MOLEX INCORPORATED AND SHOULD NOT BE USED WITHOUT WRITTEN PERMISSION | | | | | | | |
| | 0 PLACE ±--- | ±--- | MLONG | 2012/02/24 | | | | | | | | |
| ANGULAR ± 3 ° | | | | DRAFT WHERE APPLICABLE MUST REMAIN WITHIN DIMENSIONS | | MATERIAL NO. SEE TABLE | | | | | | |
| | | | | SIZE A3 | | | | | | | | |