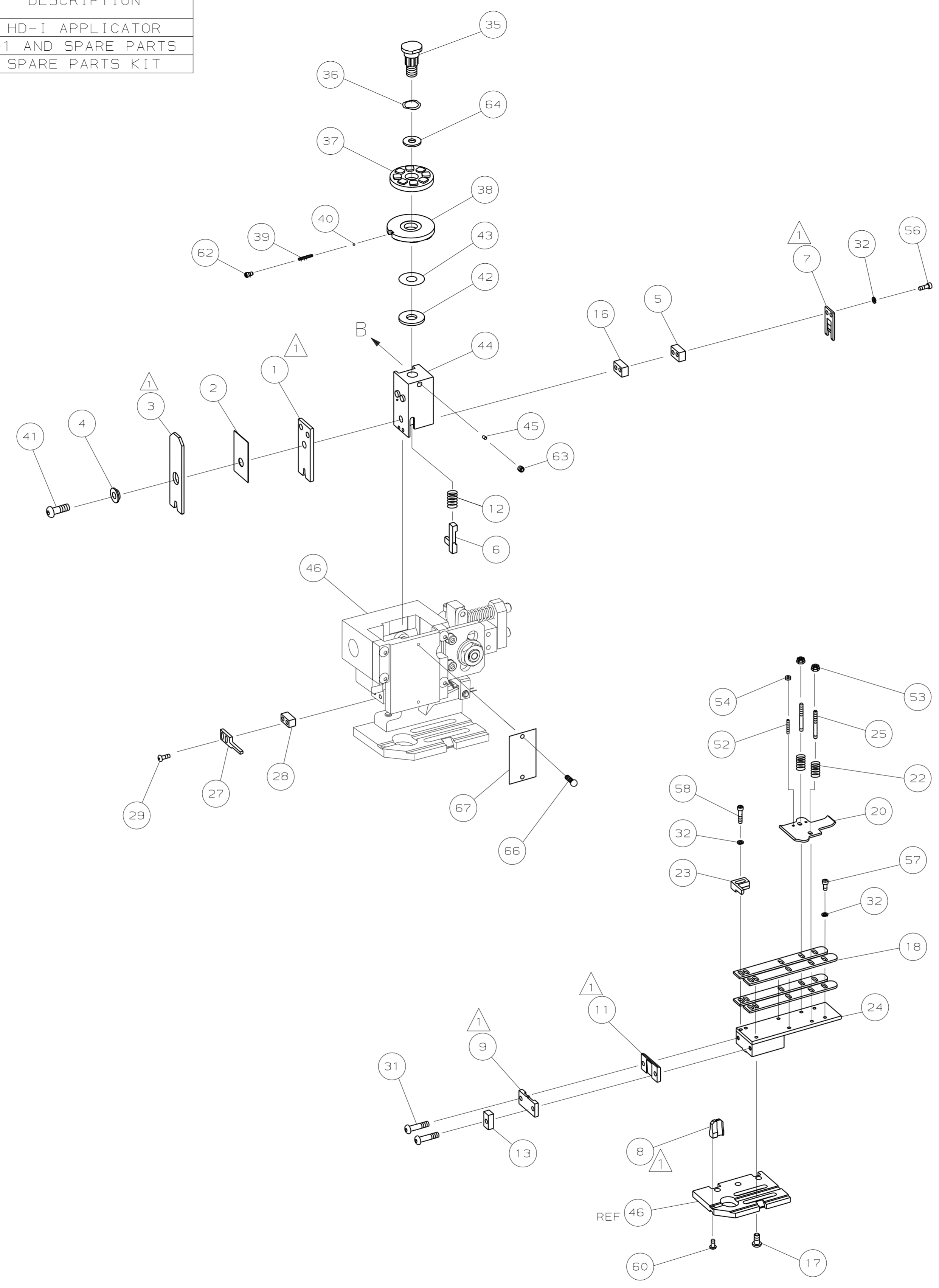


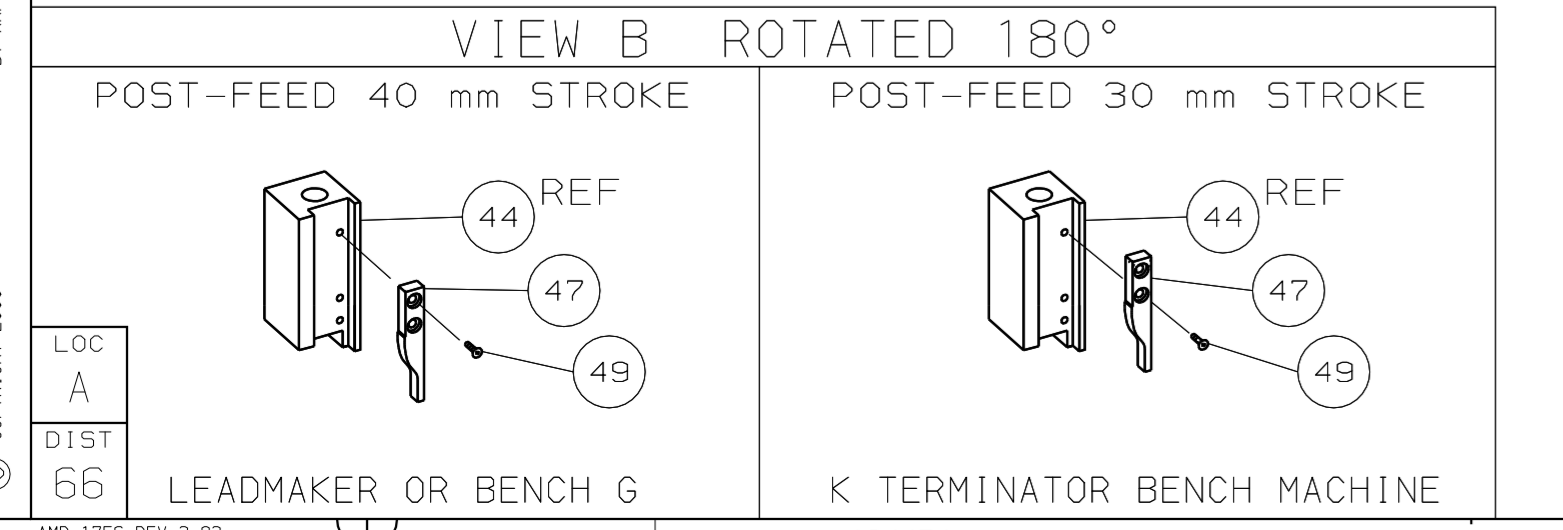
PART NUMBER	REV	FIRST USED	TERMINATOR	FEED TYPE	DESCRIPTION
1339510-1	C		BENCH & LEADMAKER	MECH POST FEED	HD-I APPLICATOR
7-1339510-1	C		BENCH & LEADMAKER	MECH POST FEED	-1 AND SPARE PARTS
7-1339510-7	A				SPARE PARTS KIT

CRIMP DATA (AMP TERMINAL)			
TERMINAL NAME: FASTIN-FASTON REC. SERIES 9.5			
CRIMP	SIZE	TYPE	RANGE
WIRE	3.56 [.140 IN]	F	2.50 - 4.00mm ²
INSUL	5.33 [.210 IN]	F	3.30-4.50 [.130-.177 IN]
WIRE STRIP LENGTH		APPL INSTRUCTION	
7.20 [.283 IN]		408-8323	
TERMINAL		FEED	
APPL SPEC 114-18022		28.80 [.1134 IN]	
TERMINALS APPLIED			
962834	-	-	-
-	-	-	-
-	-	-	-
-	-	-	-
-	-	-	-
-	-	-	-
-	-	-	-
-	-	-	-
-	-	-	-
WIRE SIZE	CRIMP HEIGHT	PIN PN & LENGTH [IN]	
mm ² AWG			
4.00mm ²	2.48 ±0.05 [.098 ±.002 IN]	5-354778-0 [.2745]	
3.50mm ²	2.38 ±0.05 [.094 ±.002 IN]	6-354778-1 [.2800]	
3.00mm ²	2.28 ±0.05 [.090 ±.002 IN]	7-354778-1 [.2850]	
2.50mm ²	2.18 ±0.05 [.086 ±.002 IN]	7-354778-3 [.2860]	



RECOMMENDED SPARE PARTS.

- GREASE RAM, CAM, CAM FOLLOWER AND FEED ROD LIGHTLY.
- LUBRICATE DAILY PER THE APPLICATOR INSTRUCTION SHEET SUPPLIED WITH THE APPLICATOR.
- WIRE RANGE FOR TERMINAL 962834 IS >2.50-4.00mm² & ALTHOUGH 2.50mm² WIRE CAN BE SUCCESSFULLY APPLIED IN THIS PRODUCT, THE RECOMMENDED TERMINAL FOR USE WITH THIS WIRE SIZE IS 962835 (WHICH HAS A WIRE RANGE OF >1.00-2.50mm²).



QTY	REQD	PER	ASSY	PART NO	DESCRIPTION	ITEM NO
-	1	1		1339510	PRINT, APPLICATOR LOG SHEET	73
-	1	1		1338705-2	DOCUMENTATION PACKAGE	72
						70
						68
-	1	1		461264-1	PLATE, IDENTIFICATION	67
-	2	2		21017-2	SCR,DRIVE (#2X.19) ID PLATE	66
						65
-	1	1		986950-1	WASHER, FLAT PRECISION	64
-	1	1		3-18031-0	SCR,SKT SET (M6X6) RAM	63
-	1	1		18023-9	SCR,SKT CAP (M4X6) CP DSC	62
						61
-	1	1		18024-7	SCR,BHC (M4X10) ANVIL	60
						59
-	2	2		1-18023-4	SCR,SHC (M4X20) HOLD DOWN	58
-	5	5		1-18023-1	SCR,SHC (M4X10) STRIP GUIDE	57
-	2	2		1-18023-4	SCR,SHC (M4X20) SLUG BLADE	56
						55
-	2	2		18029-1	NUT, HEX (M3) DRAG	54
-	2	2		986965-1	NUT, HEX SL (M4) DRAG STUD	53
-	2	2		2-18032-2	SCR,SKT SET (M3X10) DRAG	52
						51
						50
-	1	1		18024-3	SCR,BHC (M3X10) CAM	49
						48
-	1	1		1338676-1	CAM, POST-FEED 30 & 40 mm ST	47
-	1	1		1338662-2	APPLICATOR, BASIC (SUBASSY)	46
-	1	1		690191-1	PLUG, NYLON	45
-	1	1		1320998-1	RAM	44
-	1	1		690125-1	WASHER, LAMINATED	43
-	1	1		690124-1	WASHER, RAM	42
-	1	1		2-18024-6	SCREW,BHC (M8X25) CRIMPER	41
-	1	1		23241-1	BALL, STEEL	40
-	1	1		2-22278-7	SPRING, COMPRESSION	39
-	1	1		1320922-1	DISC, INSULATION	38
-	1	1		354777-1	WIRE DISC, PLASTIC	37
-	1	1		22480-5	WASHER, SPRING	36
-	1	1		690212-1	POST, RAM	35
						34
						33
-	9	9		18025-2	WASHER, LOCK (M4) SHEAR BL	32
-	2	2		1-18024-0	SCR,BHC (M4X20) SHEAR PL	31
						30
-	2	2		18024-8	SCR,BHC (M4X12) STRIPPER	29
-	1	1		1-690451-7	SPACER, STRIPPER	28
-	1	1		690455-6	STRIPPER	27
						26
-	2	2		1320906-1	DRAG, STUD	25
-	1	1		1320995-6	STRIP GUIDE	24
-	1	1		240825-2	PLATE, STRIP HOLD DOWN	23
-	2	2		4-22281-1	SPRING, DRAG	22
						21
-	1	1		1338665-1	DRAG, STOCK	20
						19
-	4	4		1338663-4	GUIDE, LOWER STRIP	18
-	4	4		1-18024-8	SCR,BHC (M6X12) STRIP GD PL	17
-	1	1		1338708-1	SPACER, SLUG BLADE	16
						15
						14
-	1	1		690481-2	SPACER, HOLD DOWN	13
-	1	1		23846-1	SPRING, HOLD DOWN	12
-	1	1		240833-3	PLATE, REAR SHEAR	11
						10
-	1	1		690482-5	PLATE, FRONT SHEAR	9
-	1	2	1	1333222-1	ANVIL	8
-	1	1		3-690474-6	BLADE, SLUG	7
-	1	1		4-455892-0	HOLD DOWN, TERMINAL	6
-	1	1		5-240641-5	SPACER, SLUG BLADE	5
-	1	1		238009-1	SPACER, BLOCK CRIMPER	4
-	1	2	1	1-456134-1	CRIMPER, INSULATION	3
-	1	1		1-455888-7	SPACER, CRIMPER	2
-	1	2	1	456425-2	CRIMPER, WIRE	1

PARTS LIST		DIMENSIONS: mm [INCHES]		MATERIAL		FINISH	
QTY REQD PER ASSY		DO NOT SCALE PRINT.		MATERIAL		FINISH	
REVISION OF EACH ASSY NO (WHEN BLANK, USE DWG REVISION)		TOLERANCES UNLESS OTHERWISE SPECIFIED:		HT TR		FIN	
		1 PLC DEC ±					
		2 PLC DEC ±					
		3 PLC DEC ±					
		ANGLES ±					
		SURF TEXTURE:					
		REMOVE BURRS, BREAK SHARP EDGES RO.38 MAX					
		CAGE CODE					
		00779					

THIS DRAWING IS A CONTROLLED DOCUMENT.

LAYOUT L1339510
SET UP GAGE 458638-3

2000
RELEASED FOR PUBLICATION
BY AMP INCORPORATED. ALL RIGHTS RESERVED.
THIS DRAWING IS UNPUBLISHED.
AMP 1756 REV 3-92

1339510
D
C
B
A