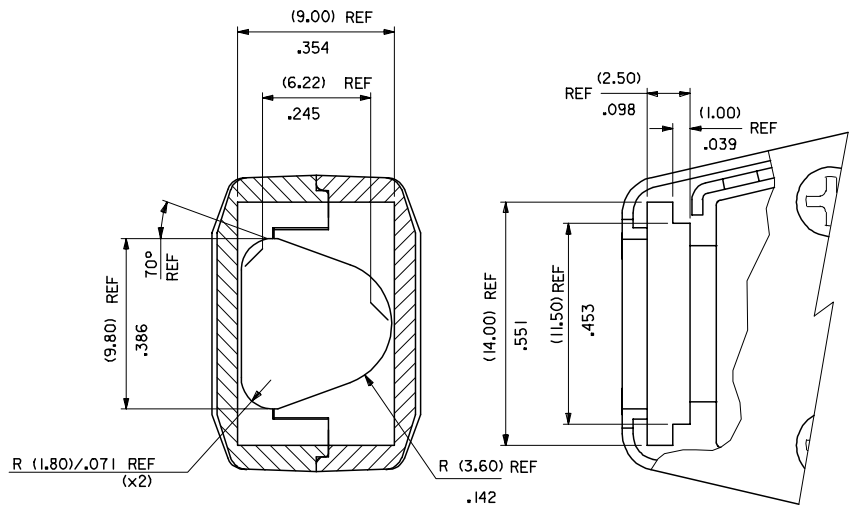
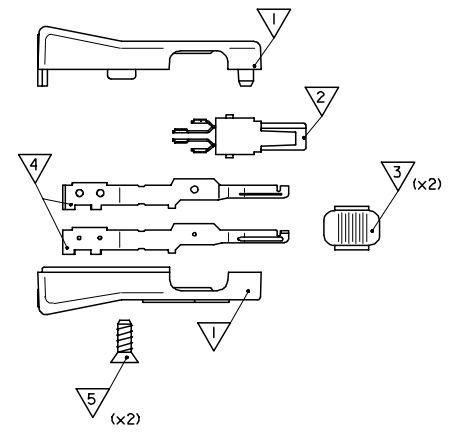


13 12 11 10 9 8 7 6 5 4 3 2 1

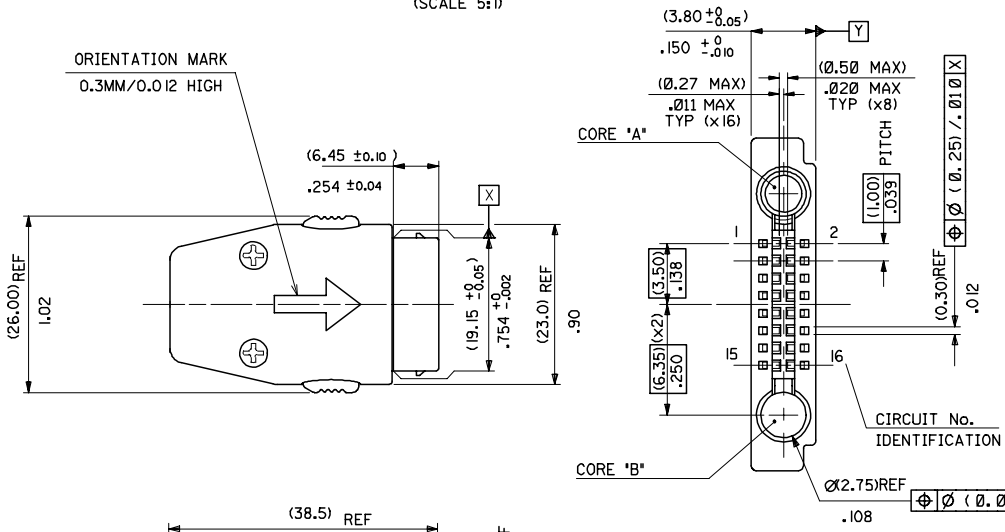


NO.	DESCRIPTION
1	UPPER SHELL LOWER SHELL
2	16 CIRCUIT I/O MOBILE PHONE PLUG CONNECTOR
3	BUTTONS
4	METAL LOCKING LATCHES
5	SCREWS : SELF TAPPING

KIT No.	COMPONENTS	RF CORING CONFIG	
		CORE 'A'	CORE 'B'
90813-0001	1, 2, 3, 4, 5	VOID	RF
90813-0002	1, 2, 3, 4, 5	RF	VOID
90813-0003	1, 2, 3, 4, 5	RF	RF
90813-0004	1, 2, 3, 4, 5	VOID	VOID
90813-0005	3, 4	N/A	N/A

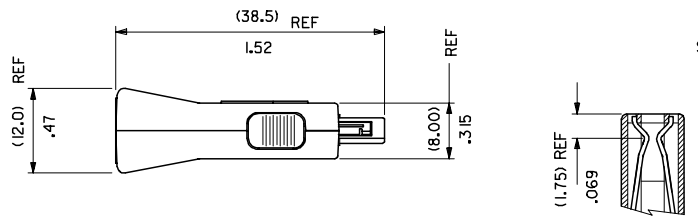


RECESS FOR CABLE STRAIN RELIEF GROMMET
(SCALE 5:1)



NOTES:

1. MATERIALS:
SHELLS: 30% GLASS FILLED POLYESTER (UL94V-0, COLOUR: BLACK)
BUTTONS: 30% GLASS FILLED POLYESTER (UL94V-0, COLOUR: BLACK)
LATCHES: STAINLESS STEEL
PLUG HOUSING: POLYAMIDE 46, 45% GLASS FILL UL94 V-0, COLOUR - BLACK
SIGNAL CONTACTS: COPPER ALLOY (0.25mm)/.009uin THICK REF.
PLATING: (0.10um) / .004uin MIN GOLD FLASH, ON (1.0um) / .039uin MIN PALLADIUM NICKEL WITH (1.27um) / .050uin MIN NICKEL UNDERPLATE. (3-5um) / .118-.197uin MIN TIN IN THE SOLDER CUP AREA.
2. MATES WITH SERIES 90811 HANDSET CONNECTOR.
3. SEE PACKAGING SPECIFICATION ES-99039-0002.
4. SEE PRODUCT SPECIFICATION PS-99020-0045.
5. SEE TERMINATION SPECIFICATION ES-99033-0003.
6. FOR RF COAX INSERT, USE MOLEX 90853-0001 SUPPLIED SEPARATELY.



MOD HSG MATERIAL	QUALITY SYMBOLS	GENERAL TOLERANCES (UNLESS SPECIFIED)	DIMENSION STYLE	SCALE	DESIGN UNITS	THIRD ANGLE PROJECTION
EC NO: E2007-0847	▽=0	mm INCH	MM ONLY	2:1	METRIC	
DRWN:DCARTON 2007/04/26	▽=0	4 PLACES ± --- ± ---	DRAWN BY DATE			
CHKD: 2007/04/27		3 PLACES ± --- ± ---	DCARTON 2007/03/27			
APPR:EFOLAN 2007/05/03		2 PLACES ± --- ± ---	CHECKED BY DATE			
		1 PLACE ± --- ± ---	FDUGGAN 2007/03/27			
		ANGULAR ±1/2°	APPROVED BY DATE			
			EFOLAN 2007/03/27			
			MATERIAL NO.			
			908130001			
			DOCUMENT NO.			
			SDA-90813			
			SHEET NO.			
			1 OF 1			

DRAFT WHERE APPLICABLE MUST REMAIN WITHIN DIMENSIONS		MOLEX INCORPORATED	
SIZE A2		THIS DRAWING CONTAINS INFORMATION THAT IS PROPRIETARY TO MOLEX INCORPORATED AND SHOULD NOT BE USED WITHOUT WRITTEN PERMISSION	

12 11 10 9 8 7 6 5 4 3 2 1