

## **DRV601EVM2**

This user's guide describes the operation of the DRV601EVM2 stereo line driver evaluation module and provides measurement data and design information such as the schematic, bill of materials, and printed-circuit board layout.

### **Contents**

|   |  |    |
|---|--|----|
| 1 | Overview .....                                     | 2  |
| 2 | Quick Setup Guide.....                             | 4  |
| 3 | Shutdown .....                                     | 5  |
| 4 | Component Selection .....                          | 5  |
| 5 | Layout Recommendations .....                       | 7  |
| 6 | DRV601EVM2 Performance .....                       | 8  |
| 7 | Related Documentation from Texas Instruments ..... | 19 |
| 8 | Design Documentation .....                         | 19 |

### **List of Figures**

|    |   |    |
|----|---|----|
| 1  | DRV601EVM2.....                                       | 2  |
| 2  | DRV601EVM2 Functional Block Diagram .....             | 3  |
| 3  | DRV601EVM2 Physical Structure .....                   | 3  |
| 4  | Power-Up/Down Sequence.....                           | 5  |
| 5  | Second-Order, Active Low-Pass Filter .....            | 6  |
| 6  | THD+N vs Voltage (Analog Input) .....                 | 10 |
| 7  | THD+N vs Voltage (Analog Input) Linear Scale.....     | 10 |
| 8  | THD+N vs Voltage (Digital Input) .....                | 11 |
| 9  | THD+N vs Voltage (Digital Input) Linear Scale .....   | 11 |
| 10 | THD+N vs Frequency (Analog Input).....                | 12 |
| 11 | THD+N vs Frequency (Digital Input).....               | 12 |
| 12 | FFT Spectrum With –60-dBFS Tone (Analog Input).....   | 13 |
| 13 | FFT Spectrum With –60-dBFS Tone (Digital Input) ..... | 13 |
| 14 | Idle Noise FFT Spectrum (Analog Input).....           | 14 |
| 15 | Idle Noise FFT Spectrum (Digital Input).....          | 14 |
| 16 | Channel Separation (Analog Input) .....               | 15 |
| 17 | Channel Separation (Digital Input) .....              | 15 |
| 18 | Frequency Response (Analog Input) .....               | 16 |
| 19 | Frequency Response (Digital Input) .....              | 16 |
| 20 | Pop/Click (Enable) .....                              | 17 |
| 21 | Pop/Click (Disable).....                              | 18 |
| 22 | DRV601EVM2 PCB Component Placement Top .....          | 23 |
| 23 | DRV601EVM2 PCB Top and Bottom Layers.....             | 23 |

### **List of Tables**

|   |                                   |   |
|---|-----------------------------------|---|
| 1 | DRV601EVM2 Specifications .....   | 2 |
| 2 | Recommended Supply Voltage .....  | 5 |
| 3 | DRV601EVM2 Specification.....     | 6 |
| 4 | General Test Specifications ..... | 8 |

PurePath Digital, DirectPath, FilterPro are trademarks of Texas Instruments.  
TOSLINK is a trademark of Toshiba Corp..

|    |                                       |    |
|----|---------------------------------------|----|
| 5  | Electrical Data .....                 | 8  |
| 6  | Audio Performance Analog Input .....  | 8  |
| 7  | Audio Performance Digital Input ..... | 8  |
| 8  | Physical Specifications .....         | 9  |
| 9  | DRV601EVM2 Parts List .....           | 21 |
| 10 | PCB Specifications .....              | 22 |

## 1 Overview

The DRV601EVM2 customer evaluation module (EVM) demonstrates the integrated circuits DRV601RTJ from Texas Instruments (TI).

The DRV601 is a stereo line driver designed to allow the removal of the DC-blocking capacitors for reduced component count and cost. The DRV601 is ideal for single-supply electronics where size and cost are critical design parameters.

The DRV601 is capable of driving  $2 V_{rms}$  into a  $600\text{-}\Omega$  load at 3.3-V supply. The DRV601 has external gain-setting resistors that support a gain range of  $-1 V/V$  to  $-10 V/V$  and line outputs that have  $\pm 8\text{ kV}$  IEC ESD protection. The DRV601 has independent shutdown control for the left and right audio channels.

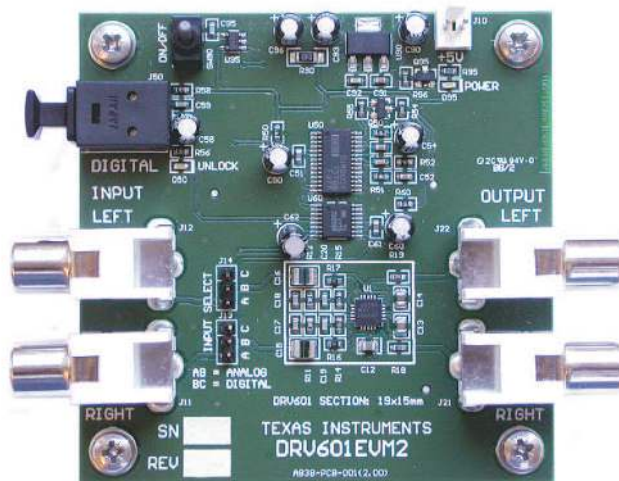
This EVM is configured with one TOSLINK™ digital audio S/PDIF connector, two RCA phono input connectors, and two RCA phono output connectors. Power supply is connected via a two-pin 2,54-mm pin header.

**Table 1. DRV601EVM2 Specifications**

| KEY PARAMETERS     |                                      |
|--------------------|--------------------------------------|
| Supply Voltage     | 5 V                                  |
| Number of Channels | 2                                    |
| Load Impedance     | Minimum $600\ \Omega$                |
| Output Voltage     | $2 V_{rms}$                          |
| DYR                | > 105 dB analog in, 98 dB digital in |

This EVM is designed for evaluating applications such as set-top boxes and PDP/LCD televisions.

This document covers EVM specifications, audio performance measurements graphs, and design documentation that includes schematics, parts list, and layout design.



**Figure 1. DRV601EVM2**

Gerber (layout) files are available at the [TI Web site](#).

### 1.1 DRV601EVM2 Features

- Two-channel evaluation module [a double-sided, plated-through printed-circuit board (PCB) layout]
- 2- $V_{rms}$  line output
- Digital S/PDIF TOSLINK™ input
- Output capacitor-less.
- Shutdown button

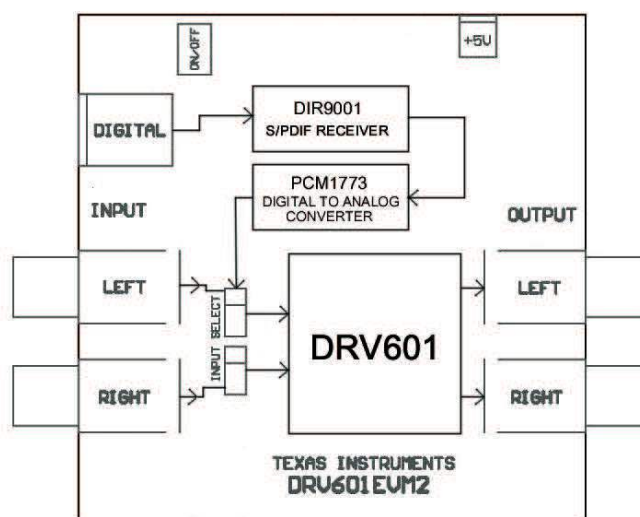


Figure 2. DRV601EVM2 Functional Block Diagram

### 1.2 PCB Key Map

The physical structure of the DRV601EVM2 is shown in [Figure 3](#).

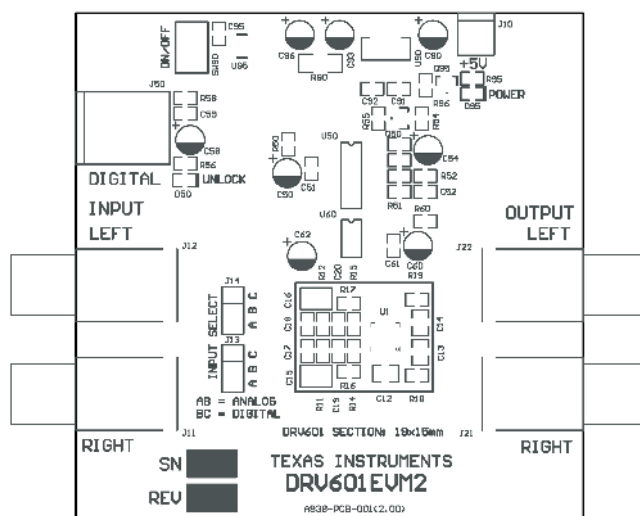


Figure 3. DRV601EVM2 Physical Structure

## 2 Quick Setup Guide

This section describes the DRV601EVM2 board in regards to power supply and system interfaces. It provides information regarding handling and unpacking, absolute operating conditions, and a description of the factory default switch and jumper configuration.

The following is a step-by-step guide to configuring the DRV601EVM2 for device evaluation.

### 2.1 *Electrostatic Discharge Warning*

Many of the components on the DRV601EVM2 are susceptible to damage by electrostatic discharge (ESD). Customers are advised to observe proper ESD handling precautions when unpacking and handling the EVM, including the use of a grounded wrist strap at an approved ESD workstation.

**CAUTION**

Failure to observe ESD handling procedures may result in damage to EVM components.

### 2.2 *Unpacking the EVM*

On opening the DRV601EVM2 package, ensure that the following items are included:

- 1 pc. DRV601EVM2 board with one DRV601RTJ
- 1 pc. PurePath Digital™ CD-ROM

If either of these items is missing, contact the Texas Instruments Product Information Center nearest you to inquire about a replacement.

## 2.3 Power Supply Setup

To power up the EVM, one power supply is needed. The power supply is connected to the EVM using a 2-pin, 2,54-mm pin header, J10.

**Table 2. Recommended Supply Voltage**

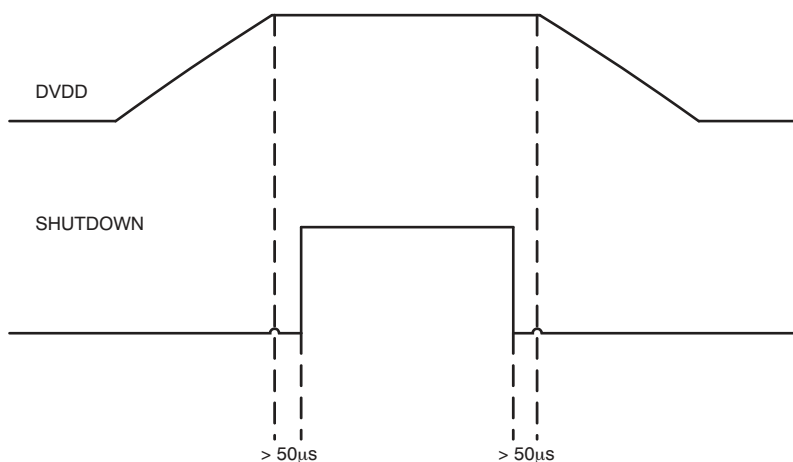
| Description  | Voltage Limitations | Current Requirement | Cable |
|--------------|---------------------|---------------------|-------|
| Power supply | 5 V                 | 0.25 A              |       |

### CAUTION

Applying voltages above the limitations given in [Table 2](#) may cause permanent damage to your hardware.

## 3 Shutdown

For minimum click and pop during power on and power off, the shutdown pin should be kept low. The preferred power-up/down sequence is shown in [Figure 4](#).



**Figure 4. Power-Up/Down Sequence**

On the DRV601EVM2, the correct shutdown signal is provided by U95, a TPS3825-33 supply monitor.

## 4 Component Selection

### 4.1 Charge Pump

The charge pump flying capacitor, C13, serves to transfer charge during the generation of the negative supply voltage. The PVSS capacitor must be at least equal to the charge pump capacitor in order to allow maximum charge transfer. Low ESR capacitors are an ideal selection, and a value of 1  $\mu\text{F}$  is typical. Capacitor values smaller than 1  $\mu\text{F}$  can be used, but the maximum output can be reduced. It is therefore recommended to validate the design with thorough testing.

## 4.2 Decoupling Capacitors

The DRV601 is a DirectPath™ line driver amplifier that requires adequate power supply decoupling to ensure that the noise and total harmonic distortion (THD) are low. A good low equivalent-series-resistance (ESR) ceramic capacitor, C12, typical 1  $\mu$ F, placed as close as possible to the device  $V_{DD}$  leads works best. Placing this decoupling capacitor close to the DRV601 is important for the performance of the amplifier. For filtering lower frequency noise signals, a 10- $\mu$ F or greater capacitor placed near the audio amplifier also helps, but is not required in most applications because of the high PSRR of this device.

The charge pump circuit does apply ripple current on the  $V_{DD}$  line, and a LC or RC filter may be needed if noise-sensitive audio devices share the  $V_{DD}$  supply.

## 4.3 Using the DRV601 as a Second-Order Low-Pass Filter

Many of the audio DACs used today require an external low-pass filter, to remove band noise. This is possible with the DRV601, and the EVM is configured as a 40-kHz, second-order, active Butterworth filter. The topology chosen is the MFB Single-Ended. Further, the DRV601 needs a ac-coupling capacitor to remove dc-content from the source.

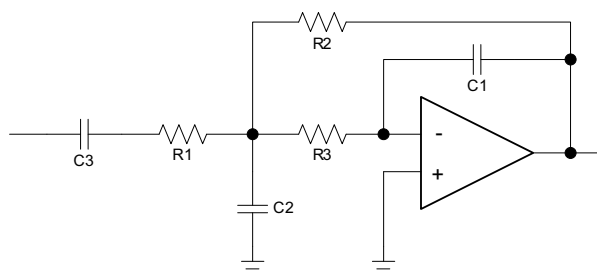


Figure 5. Second-Order, Active Low-Pass Filter

The component values can be calculated with the help of the TI FilterPro™ program available on:

<http://focus.ti.com/docs/toolsw/folders/print/filterpro.html>

In Table 3, various proposals for the filter and gain settings can be found.

Table 3. DRV601EVM2 Specification

| Gain      | High Pass | Low Pass | C1     | C2     | C3          | R1     | R2    | R3    |
|-----------|-----------|----------|--------|--------|-------------|--------|-------|-------|
| -1 V/V    | 16 Hz     | 40 kHz   | 100 pF | 680 pF | 1 $\mu$ F   | 10 kR  | 10 kR | 24 kR |
| -1.5 V/V  | 19 Hz     | 40 kHz   | 68 pF  | 680 pF | 1 $\mu$ F   | 8.2 kR | 12 kR | 30 kR |
| -2 V/V    | 11 Hz     | 40 kHz   | 33 pF  | 330 pF | 1 $\mu$ F   | 15 kR  | 30 kR | 47 kR |
| -2 V/V    | 11 Hz     | 30 kHz   | 47 pF  | 470 pF | 1 $\mu$ F   | 15 kR  | 30 kR | 43 kR |
| -3.33 V/V | 12 Hz     | 40 kHz   | 33 pF  | 470 pF | 1 $\mu$ F   | 13 kR  | 43 kR | 43 kR |
| -10 V/V   | 15 Hz     | 30 kHz   | 22 pF  | 1 nF   | 2.2 $\mu$ F | 4.7 kR | 47 kR | 27 kR |

The resistor values should be low value to get low noise, but should be high value to get a small size ac-coupling capacitor. With the proposed values, 15k, 30k, and 47k, a DYR of 105 dB can be achieved with a small 1- $\mu$ F input ac-coupling capacitor.

## **5 Layout Recommendations**

### **5.1 Exposed Pad on the DRV601RJT Package**

The exposed metal pad on the DRV601RTJ package can be soldered to a pad on the PCB in order to improve reliability. The pad on the PCB should be allowed to float and not be connected to ground or power. Connecting this pad to power or ground prevents the device from working properly because it is connected internally to PVSS.

### **5.2 SGND and PGND Connections**

The SGND and PGND pins of the DRV601 must be routed separately back to the decoupling capacitor in order to provide proper device operation. If the SGND pins are connected directly to each other, the part functions without risk of failure, but the noise and THD performance can be reduced.

## 6 DRV601EVM2 Performance

This section provides general test specifications, electrical data, audio performance data, and physical specifications.

**Table 4. General Test Specifications<sup>(1)</sup>**

| GENERAL TEST SPECIFICATIONS |              | NOTES                         |
|-----------------------------|--------------|-------------------------------|
| Supply Voltage              | 5 V          |                               |
| Load Impedance              | 600 $\Omega$ |                               |
| Input Signal                | 1-kHz Sine   | Digital audio TOSLINK™ S/PDIF |
| Measurement Filter          | AES17        |                               |

<sup>(1)</sup> These test conditions are used for all tests, unless otherwise specified.

**Table 5. Electrical Data<sup>(1)</sup>**

| ELECTRICAL DATA SPECIFICATIONS |               | NOTES/CONDITIONS                                      |
|--------------------------------|---------------|---|
| Output Voltage, 600 $\Omega$   | 2 $V_{rms}$   | 1 kHz, unclipped (< 1% THD), $T_A = 25^\circ\text{C}$ |
| Output Voltage, 100 k $\Omega$ | 2.1 $V_{rms}$ | 1 kHz, unclipped (< 1% THD), $T_A = 25^\circ\text{C}$ |
| Supply Current                 | < 10 mA       | 1 kHz, 2 m $V_{rms}$ output voltage                   |
| Supply Current                 | < 20 mA       | 1 kHz, 2 m $V_{rms}$ output voltage into 600 $\Omega$ |

<sup>(1)</sup> All electrical and audio specifications are typical values.

**Table 6. Audio Performance Analog Input**

| AUDIO PERFORMANCE ANALOG INPUT      |                |                    | NOTES/CONDITIONS                            |
|-------------------------------------|----------------|--------------------|---|
| THD+N, 600 $\Omega$                 | 0.02 $V_{rms}$ | < 0.099 %          | 1 kHz (Noise-limited)                       |
| THD+N, 600 $\Omega$                 | 0.2 $V_{rms}$  | < 0.009 %          | 1 kHz (Noise-limited)                       |
| THD+N, 600 $\Omega$                 | 2 $V_{rms}$    | < 0.006 %          | 1 kHz                                       |
| THD+N, 100 k $\Omega$               | 0.02 $V_{rms}$ | < 0.099 %          | 1 kHz (Noise-limited)                       |
| THD+N, 100 k $\Omega$               | 0.2 $V_{rms}$  | < 0.009 %          | 1 kHz (Noise-limited)                       |
| THD+N, 100 k $\Omega$               | 2 $V_{rms}$    | < 0.003 %          | 1 kHz                                       |
| Dynamic Range                       |                | > 105 dB           | Ref: 2 $V_{rms}$ , A-weighted, AES17 filter |
| Noise Voltage                       |                | < 12 $\mu V_{rms}$ | A-weighted, AES17 filter                    |
| DC Offset                           |                | < 5 mV             | No signal, 600- $\Omega$ load               |
| Channel Separation                  |                | > 97 dB            | 1 kHz, 2 $V_{rms}$                          |
| Frequency Response: 20 Hz to 20 kHz |                | $\pm 1$ dB         | 2 $V_{rms}$ /600 $\Omega$                   |

**Table 7. Audio Performance Digital Input**

| AUDIO PERFORMANCE DIGITAL INPUT     |                |                    | NOTES/CONDITIONS                            |
|-------------------------------------|----------------|--------------------|---|
| THD+N, 600 $\Omega$                 | 0.02 $V_{rms}$ | < 0.2 %            | 1 kHz (Noise-limited)                       |
| THD+N, 600 $\Omega$                 | 0.2 $V_{rms}$  | < 0.02 %           | 1 kHz (Noise-limited)                       |
| THD+N, 600 $\Omega$                 | 2 $V_{rms}$    | < 0.04 %           | 1 kHz                                       |
| THD+N, 100 k $\Omega$               | 0.02 $V_{rms}$ | < 0.2 %            | 1 kHz (Noise-limited)                       |
| THD+N, 100 k $\Omega$               | 0.2 $V_{rms}$  | < 0.02 %           | 1 kHz (Noise-limited)                       |
| THD+N, 100 k $\Omega$               | 2 $V_{rms}$    | < 0.04 %           | 1 kHz                                       |
| Dynamic Range                       |                | > 98 dB            | Ref: 2 $V_{rms}$ , A-weighted, AES17 filter |
| Noise Voltage                       |                | < 25 $\mu V_{rms}$ | A-weighted, AES17 filter                    |
| DC Offset                           |                | < 5 mV             | No signal, 600- $\Omega$ load               |
| Channel Separation                  |                | > 75 dB            | 1 kHz, 2 $V_{rms}$                          |
| Frequency Response: 20 Hz to 20 kHz |                | $\pm 1$ dB         | 2 $V_{rms}$ /600 $\Omega$                   |



**Table 8. Physical Specifications<sup>(1)</sup>**

| PHYSICAL SPECIFICATIONS |              | NOTES/CONDITIONS             |
|-------------------------|--------------|------------------------------|
| PCB Dimensions          | 70 x 70 x 25 | Width x Length x Height (mm) |
| Total Weight            | 40 g         | Components + PCB + Mechanics |

<sup>(1)</sup> All electrical and audio specifications are typical values.

### 6.1 THD+N vs Voltage (Analog Input)

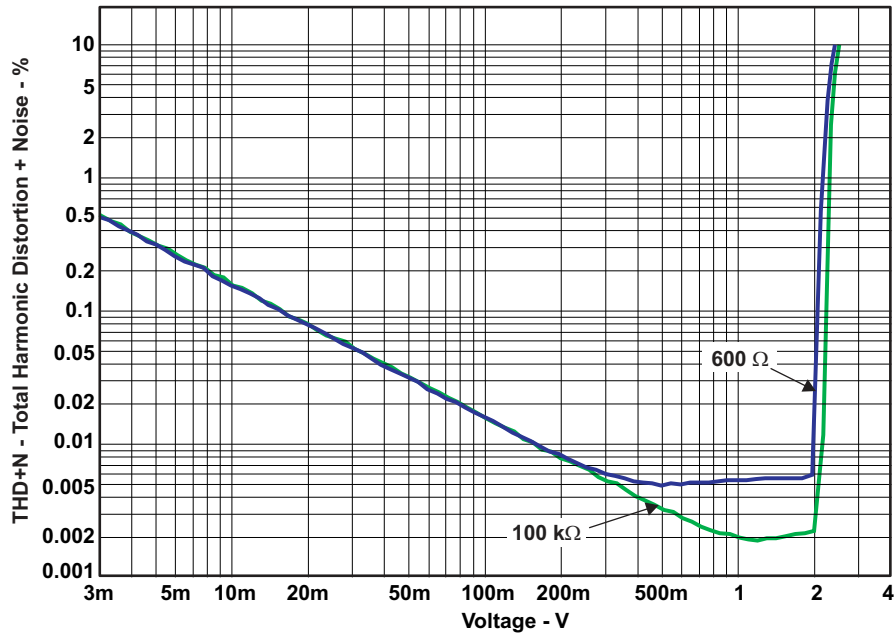


Figure 6. THD+N vs Voltage (Analog Input)

The THD+N from 10 mV<sub>rms</sub> to approximately 0.5 V<sub>rms</sub> is dominated by noise.

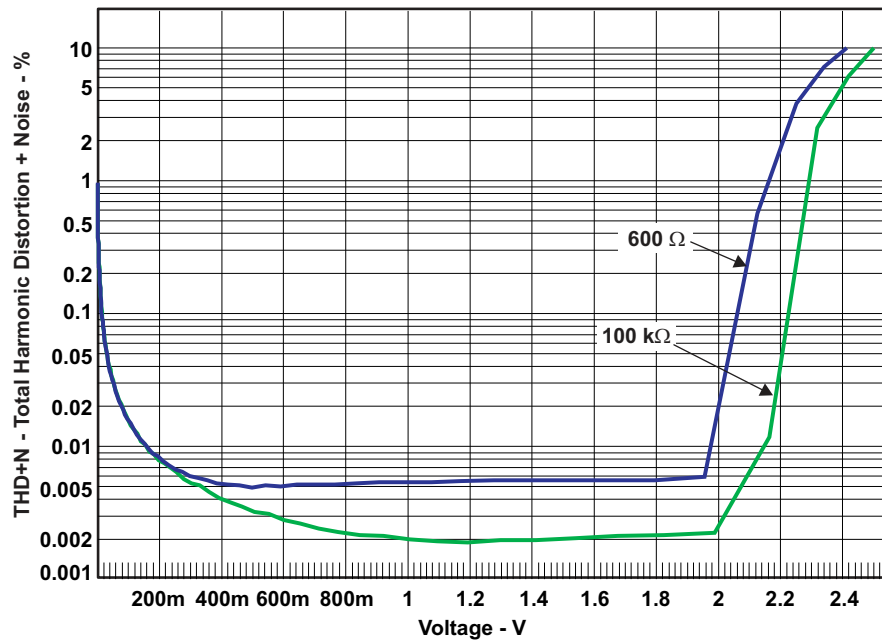


Figure 7. THD+N vs Voltage (Analog Input) Linear Scale

Here the THD+N versus output voltage is shown with linear scale. This makes it easier to see where clipping occurs. Clipping is often defined as THD+N=1%.

## 6.2 THD+N vs Voltage (Digital Input)

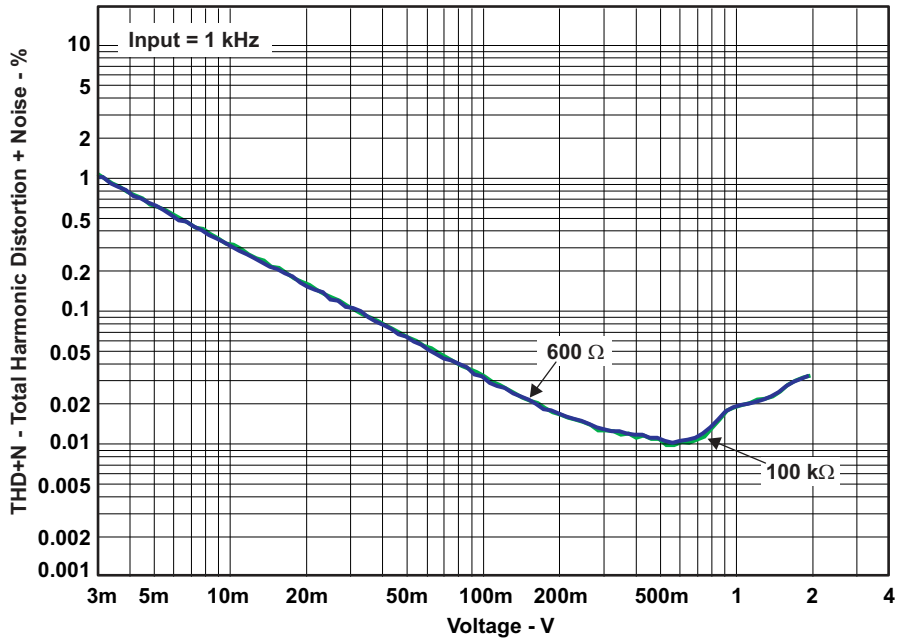


Figure 8. THD+N vs Voltage (Digital Input)

The THD+N in the range from 10 mV<sub>rms</sub> to 1 V<sub>rms</sub> is completely dominated by noise. The THD+N is independent of the load impedances and is set by the PCM1772 DAC.

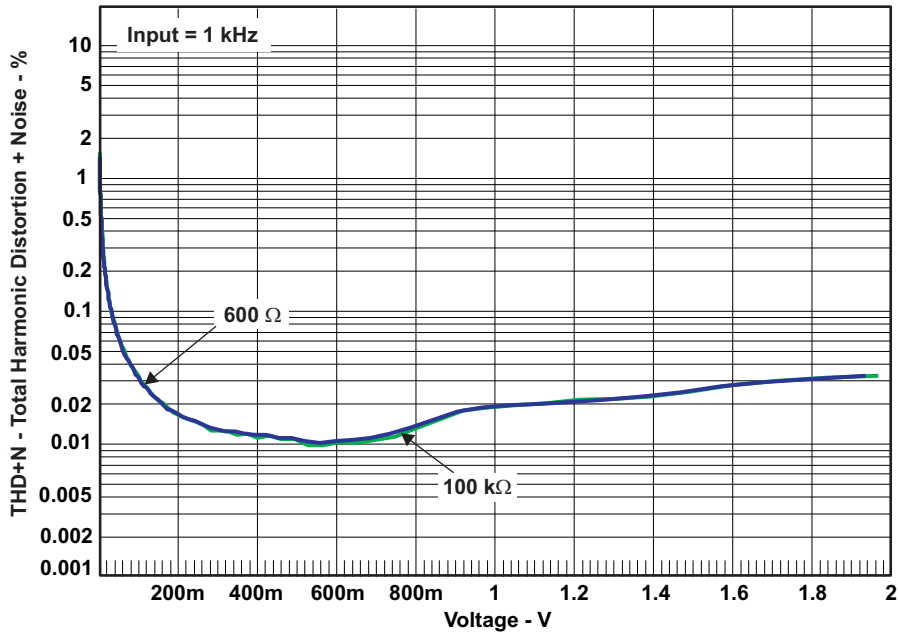


Figure 9. THD+N vs Voltage (Digital Input) Linear Scale

Here the THD+N versus output voltage is shown with linear scale. This makes it easier to see where clipping occurs. Clipping is often defined as THD+N = 1%.

### 6.3 THD+N vs Frequency

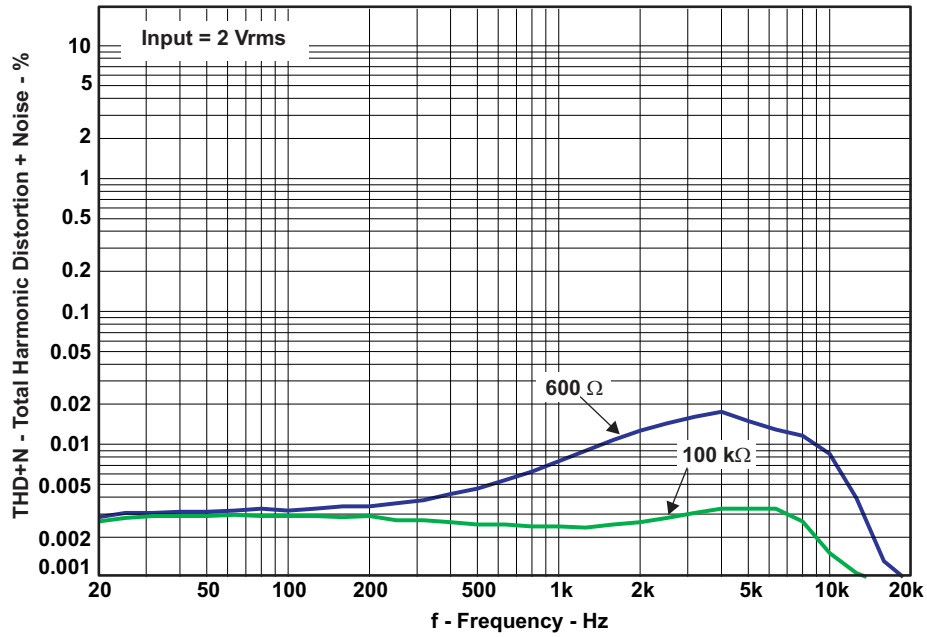


Figure 10. THD+N vs Frequency (Analog Input)

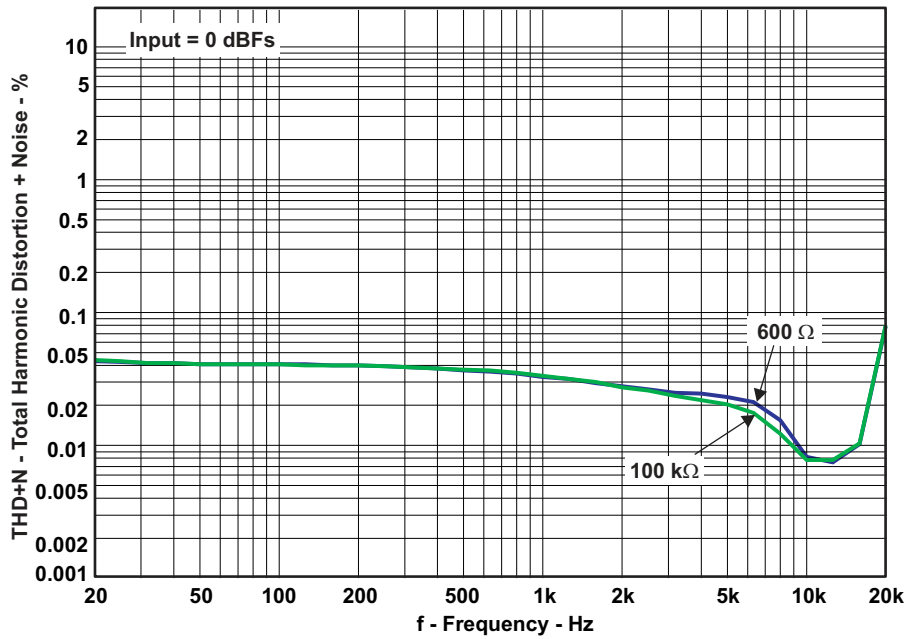


Figure 11. THD+N vs Frequency (Digital Input)

### 6.4 FFT Spectrum With -60 dBFS Tone

Reference voltage is 2 V<sub>rms</sub>. FFT size is 16k.

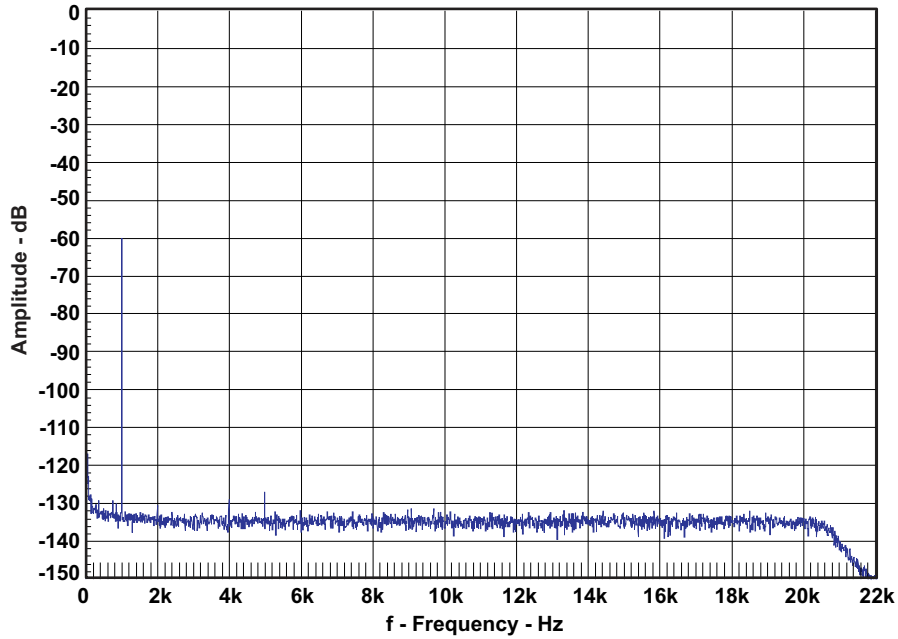


Figure 12. FFT Spectrum With -60-dBFS Tone (Analog Input)

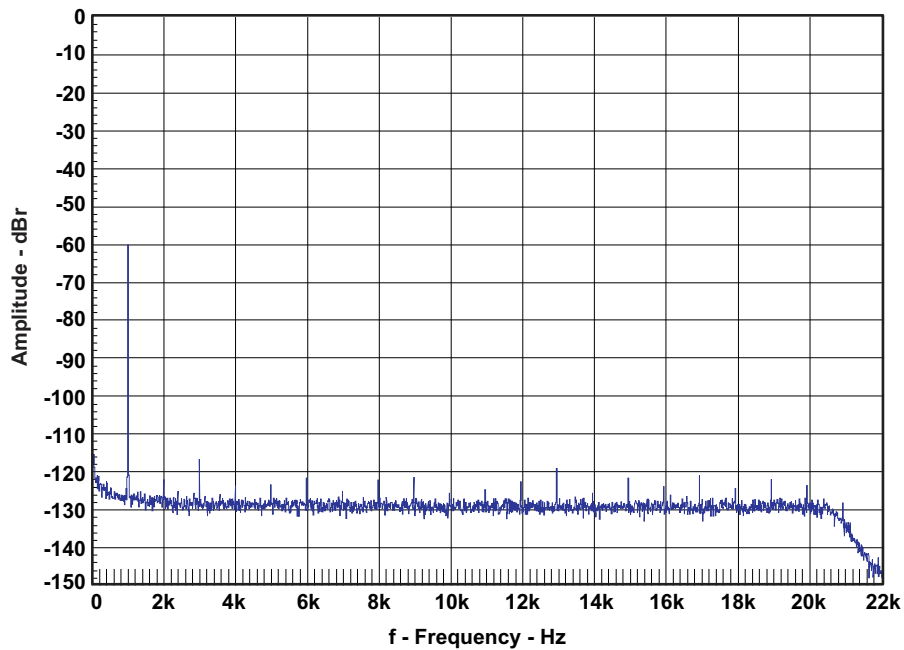


Figure 13. FFT Spectrum With -60-dBFS Tone (Digital Input)

### 6.5 Idle Noise FFT Spectrum

Reference voltage is  $2 V_{rms}$ . FFT size is 16k.

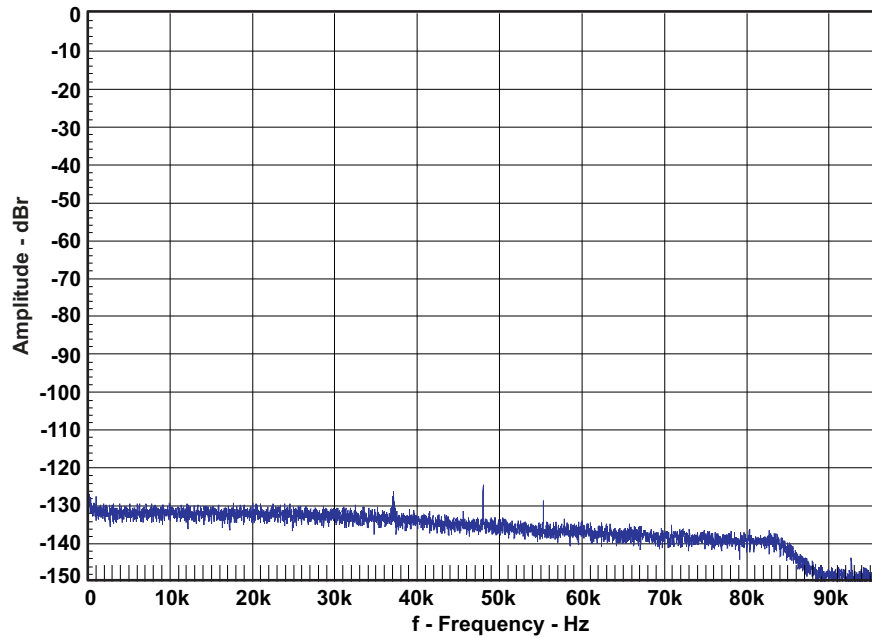


Figure 14. Idle Noise FFT Spectrum (Analog Input)

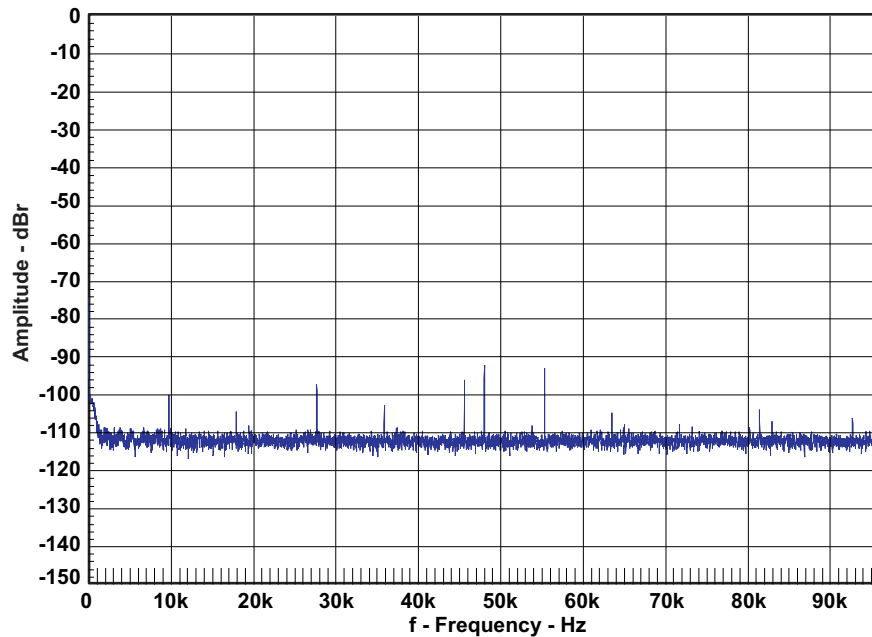


Figure 15. Idle Noise FFT Spectrum (Digital Input)

## 6.6 Channel Separation

Output signal is  $2 V_{rms}$ . Reference voltage is  $2 V_{rms}$ . Load is 600R.

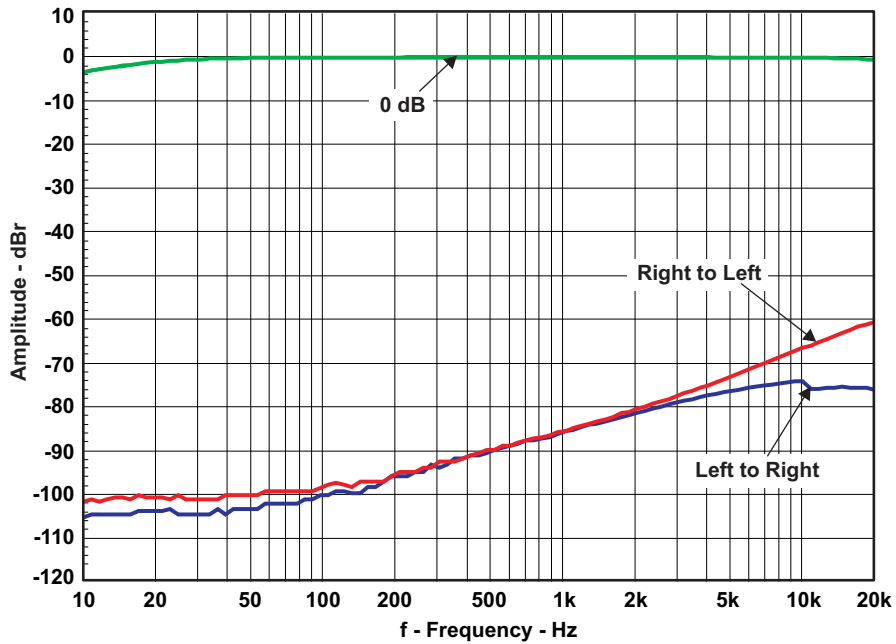


Figure 16. Channel Separation (Analog Input)

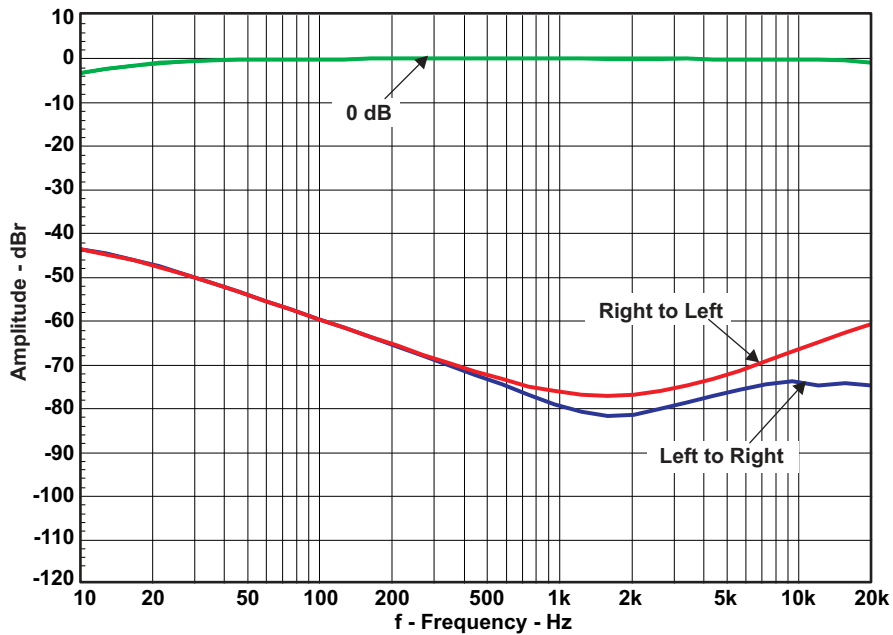


Figure 17. Channel Separation (Digital Input)

## 6.7 Frequency Response

Measurement bandwidth filter is set to 500 kHz. Load is 600R.

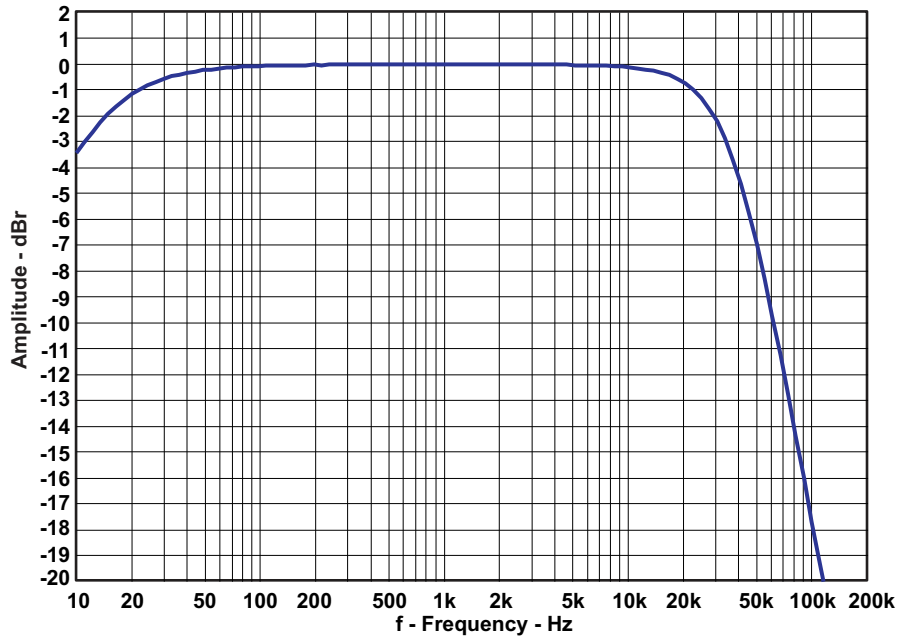


Figure 18. Frequency Response (Analog Input)

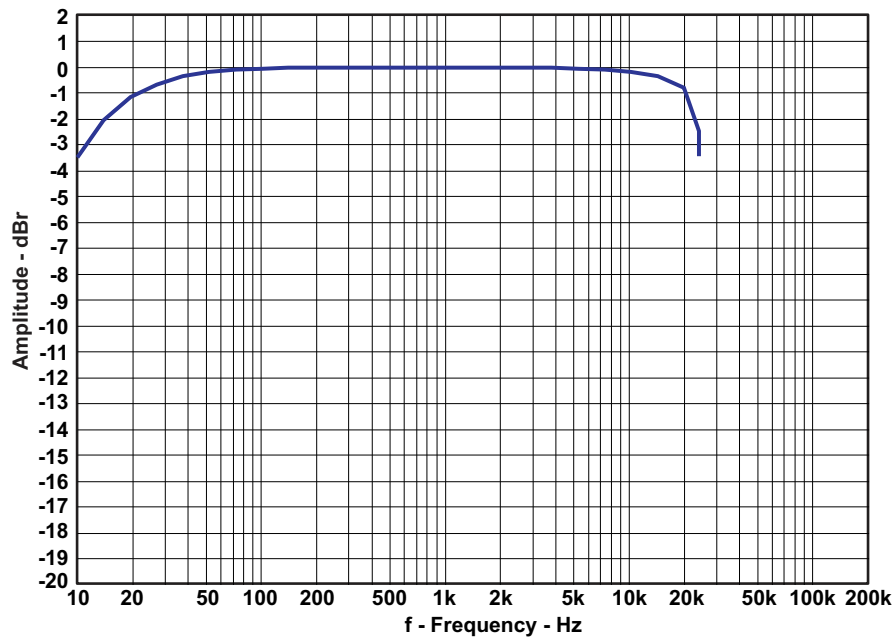


Figure 19. Frequency Response (Digital Input)

The low-frequency cutoff of 10 Hz ( $-3$  dB) is determined by the input ac-coupling capacitor,  $1 \mu\text{F}$ , together with the feedback network input impedance of  $15\text{k}\Omega$ .

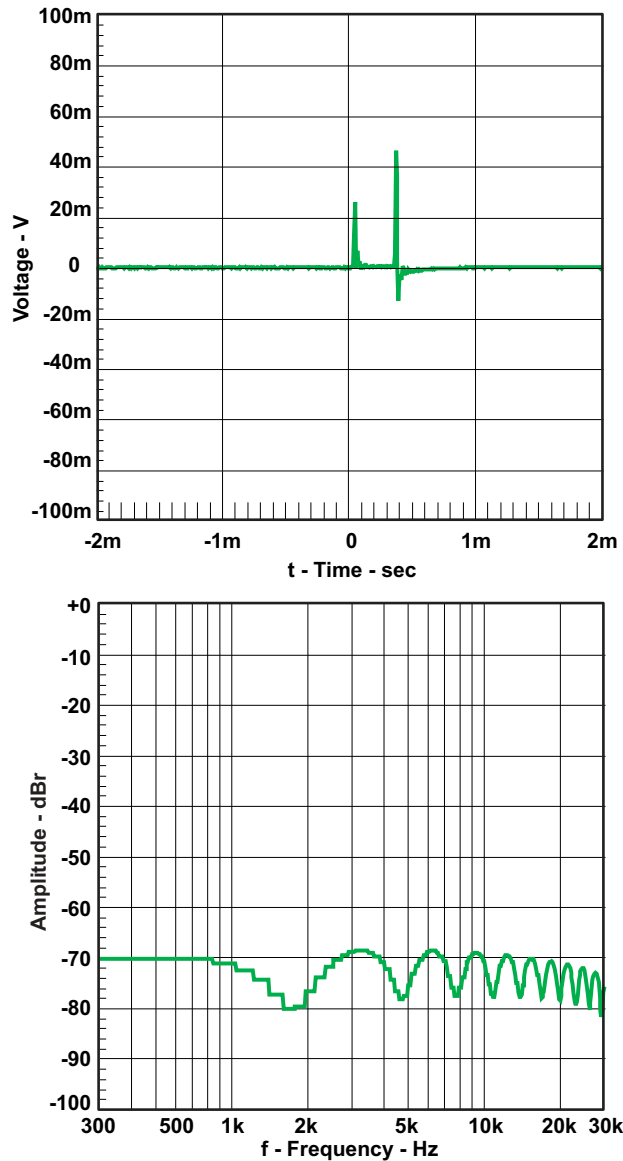
The low-pass, second-order filter implemented gives a  $-3$  dB approximately at  $35\text{ kHz}$ , and the response is  $13$  dB down at  $80\text{ kHz}$ .



### 6.8 Pop/Click (Enable)

No input signal is applied. The measurement results are presented both in a time domain and in a frequency domain. The resistor load is 600 Ω.

The power supply is applied, and then the shutdown signal is released. The shutdown signal is used to trigger the measuring system. For a description of the measuring technique, see the application report *Pop and Click Measuring Technique* ([SLEA044](#)).



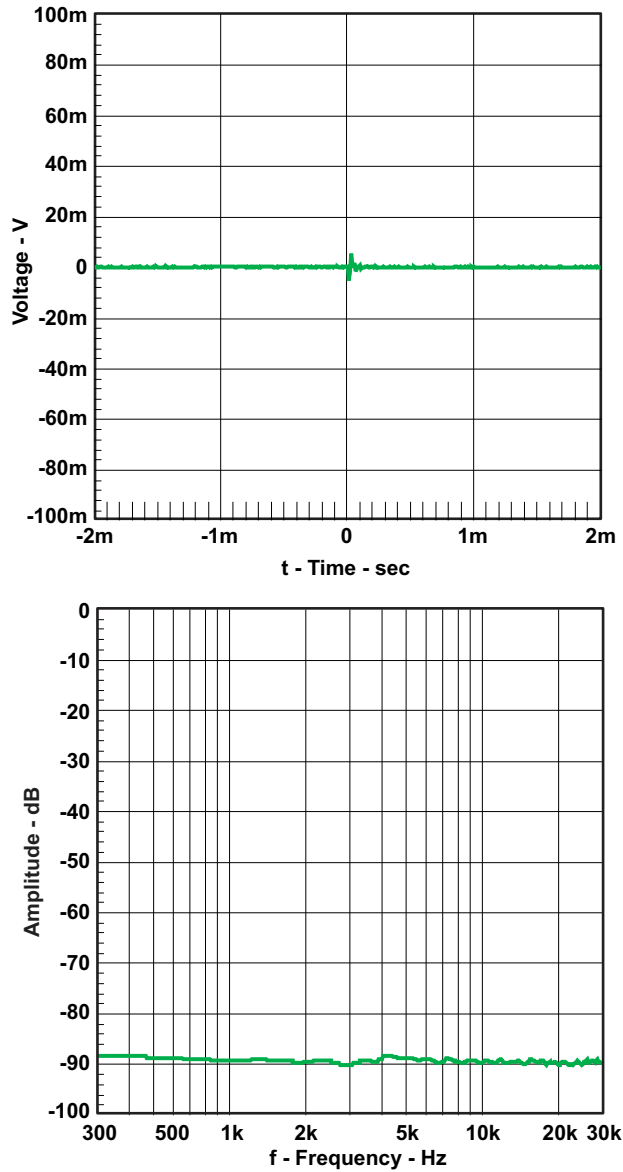
**Figure 20. Pop/Click (Enable)**

The DRV601 shows low pop during enable; only two small high-frequency spikes can be seen. The measurements are made with reference to  $2 V_{rms} = 0 \text{ dB}$ ,  $2 \text{ mV} = -60 \text{ dBr}$ .

### 6.9 Pop/Click (Disable)

No input signal is applied. The measurement results are presented both in a time domain and in a frequency domain.

No input signal applied. Load: 600 Ω.



**Figure 21. Pop/Click (Disable)**

During power down, the click is even lower than during power on (enable). A small click is seen.

## **7 Related Documentation from Texas Instruments**

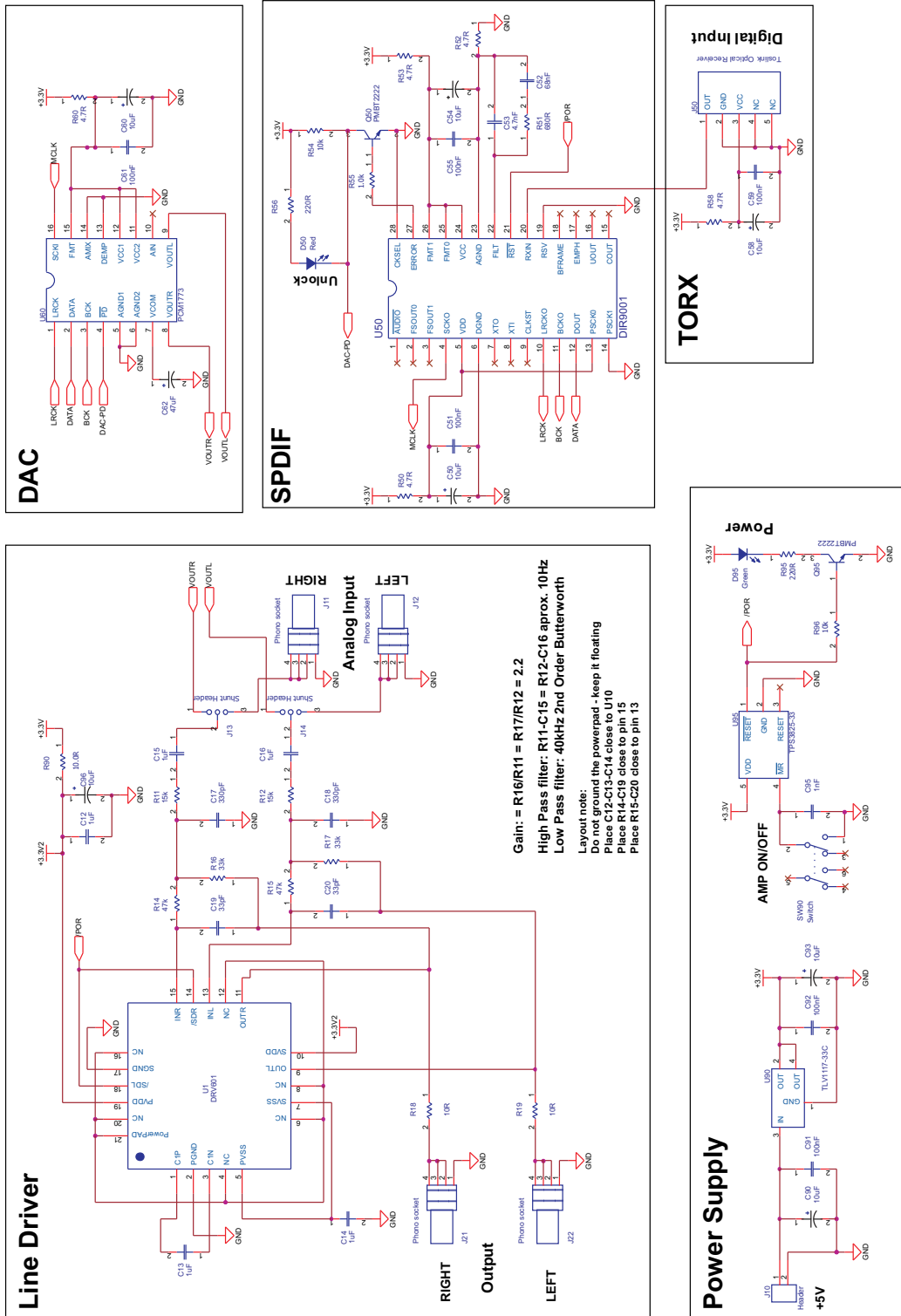
The following is a list of documents containing detailed descriptions of the integrated circuits used in the design of the DRV601EVM2.

1. *DRV601, DirectPath™ Stereo Line Driver, Adjustable Gain* data sheet ([SLOS553](#))
2. *DIR9001, 96-kHz, 24-Bit Digital Audio Interface Receiver* data sheet ([SLES198](#))
3. *PCM1772, PCM1773, Low-Voltage and Low-Power Stereo Audio Digital-to-Analog Converter With Lineout Amplifier* data sheet ([SLES010](#))

## **8 Design Documentation**

This section includes a schematic for the DRV601EVM2, the bill of materials, and the PCB design specifications.

## 8.1 DRV601EVM2 Schematic



**8.2 Parts List**
**Table 9. DRV601EVM2 Parts List**

| Qty | Part Reference                               | Description   | Manufacture       | First Mfr P/N    |
|-----|--|---|-------------------|------------------|
| 1   | R90  | 10.0R / 250mW / 1% / 1206 Thick Film Resistor   | Yageo             | RC1206FR-0710RL  |
| 1   | R55  | 1.0k / 100mW / 5% / 0603 Thick Film Resistor  | Yageo             | RC0603JR-071KL   |
| 2   | R54 R96                                      | 10k / 100mW / 5% / 0603 Thick Film Resistor   | Yageo             | RC0603JR-0710KL  |
| 2   | R18 R19                                      | 10R / 100mW / 5% / 0603 Thick Film Resistor   | Yageo             | RC0603JR-0710RL  |
| 2   | R11 R12                                      | 15k / 100mW / 5% / 0603 Thick Film Resistor   | Yageo             | RC0603JR-0715KL  |
| 2   | R56 R95                                      | 220R / 100mW / 5% / 0603 Thick Film Resistor  | Yageo             | RC0603JR-07220RL |
| 2   | R16 R17                                      | 33k / 100mW / 5% / 0603 Thick Film Resistor   | Yageo             | RC0603JR-0733KL  |
| 2   | R14 R15                                      | 47k / 100mW / 5% / 0603 Thick Film Resistor   | Yageo             | RC0603JR-0747KL  |
| 5   | R50 R52 R53<br>R58 R60                       | 4.7R / 100mW / 5% / 0603 Thick Film Resistor  | Yageo             | RC0603JR-074R7L  |
| 1   | R51  | 680R / 100mW / 5% / 0603 Thick Film Resistor  | Yageo             | RC0603JR-07680RL |
| 3   | C12 C13 C14                                  | Ceramic 1 $\mu$ F / 16V / 20% X7R 0805 Capacitor  | BC Components     | 0805B105M160NT   |
| 3   | C59 C91 C92                                  | Ceramic 100nF / 16V / 20% X7R 0603 Capacitor  | Vishay            | VJ0603Y104MXJ    |
| 3   | C51 C55 C61                                  | Ceramic 100nF / 50V / 20% X7R 0603 Capacitor  | Vishay            | VJ0603Y104MXA    |
| 1   | C53  | Ceramic 4.7nF / 50V / 20% X7R 0603 Capacitor  | BC Components     | 0603B472M500NT   |
| 1   | C52  | Ceramic 68nF / 16V / 20% X7R 0603 Capacitor   | BC Components     | 0603B683M160NT   |
| 1   | C95  | Ceramic 1nF / 50V / 10% NP0 0603 Capacitor  | BC Components     | 0603N102K500NT   |
| 2   | C19 C20                                      | Ceramic 33pF / 50V / 10% NP0 0603 Capacitor   | BC Components     | 0603N330K500NT   |
| 2   | C17 C18                                      | Ceramic 330pF / 50V / 10% NP0 0603 Capacitor  | BC Components     | 0603N331K500NT   |
| 8   | C50 C54 C58<br>C60 C90 C93<br>C96            | Electrolytic 10 $\mu$ F / 16V / 20% Aluminum 1.5mm x 4mm KG Series – General Purpose, Miniature Capacitor | Panasonic         | ECEA1CKG100      |
| 1   | C62  | Electrolytic 47 $\mu$ F / 6.3V / 20% Aluminum 1.5mm x 4mm ML Series – Miniature Capacitor                 | Rubycon           | 6.3ML47M4X7      |
| 2   | C15 C16                                      | Metal Film 1 $\mu$ F / 16V / 20% Polyester 1210 Capacitor   | Panasonic         | EPCU1C105MA5     |
| 1   | D50  | Light Emitting Red LED (0603)   | Toshiba           | TLSU1008         |
| 1   | D95  | Light Emitting Green LED (0603)   | Toshiba           | TLGU1008         |
| 2   | Q50 Q95                                      | 600mA / 40V NPN Small signal PMBT2222 Transistor (SOT-23)   | Philips           | PMBT2222         |
| 1   | U50  | DIR9001 / 96kHz Digital Audio Receiver (TSSOP28)  | Texas Instruments | DIR9001PW        |
| 1   | U60  | PCM1773 / Low-Power Stereo DAC with line-out (H/W Control) (TSSOP16-PW)                                   | Texas Instruments | PCM1773PW        |
| 1   | U1   | DRV601 / DirectPath(TM) Audio Line Driver with external gain setting. (QFN-20)                            | Texas Instruments | DRV601RTJT       |
| 1   | U95  | TPS3825-33 / 3.3V Supply Voltage Supervisor (SOP5-DBV)  | Texas Instruments | TPS3825-33DBVT   |
| 1   | U90  | TLV1117-33C / 3.3V/800mA Positive Voltage Regulator (SOT4-DCY)  | Texas Instruments | TLV1117-33CDCYR  |
| 1   | J50  | Toslink Optical Receiver Toslink Receiver, 3.3V Special func.   | Toshiba           | TORX141P         |
| 4   | SCREW11<br>SCREW12<br>SCREW13<br>SCREW14     | M3x6 Pan Head, Pozidriv, A2 Screw   | Bossard           | BN 81882 M3x6    |
| 4   | WASHER11<br>WASHER12<br>WASHER13<br>WASHER14 | M3 Stainless Steel Washer   | Bossard           | BN 670 M3        |

**Table 9. DRV601EVM2 Parts List (continued)**

| Qty | Part Reference   | Description  | Manufacture | First Mfr P/N      |
|-----|--|--|-------------|--------------------|
| 4   | STANDOFF1<br>1<br>STANDOFF1<br>2<br>STANDOFF1<br>3<br>STANDOFF1<br>4 | M3x10 Aluminum Stand-off   | Ettinger    | 05.03.108          |
| 1   | J10  | 2 pins / 1 row / 2,54mm Pitch Vertical Male Friction lock Pin Header | Molex       | 22-27-2021         |
| 4   | J11 J12 J21<br>J22   | Horizontal Female w. Switch Coax Phono socket                        | Chunfeng    | RJ843-4W           |
| 2   | J13 J14  | 3 pins / 1 row / 2,00mm Pitch Vertical Male Gold Shunt Header        | Harwin      | M22-2010305        |
| 1   | SW90   | Switch DPDT PCB Mount Switch   | NKK-Nikkai  | G-22-AP            |
| 1   | PCB11  | A838-PCB-001(2.00) / DRV601EVM2 Printed Circuit Board (2.00)         | Printline   | A838-PCB-001(2.00) |

### 8.3 PCB Specifications

**Table 10. PCB Specifications**

|                            |   |
|----------------------------|---|
| Board identification       | A838-PCB-001(2.00)  |
| Board type                 | Double-sided plated-through board                               |
| Laminate type              | FR4   |
| Laminate thickness         | 1,6 mm  |
| Copper thickness           | 35 µm (Include plating exterior layer)                          |
| Copper plating of holes    | > 25 µm   |
| Minimum hole diameter      | 0,3 mm  |
| Silkscreen component side  | White—Remove silkscreen from solder area and pre-tinned areas   |
| Silkscreen solder side     | None  |
| Solder mask component side | Green   |
| Solder mask solder side    | Green   |
| Protective coating         | Solder coating and chemical silver on free copper               |
| Electrical tests           | PCB must be electrically tested                                 |
| Manufactured to            | PERFAG 2E ( <a href="http://www.perfag.dk">www.perfag.dk</a> )  |
| Aperture table             | PERFAG 10A ( <a href="http://www.perfag.dk">www.perfag.dk</a> ) |
| Board size                 | 60 mm × 50 mm   |
| Comments                   | See drill information file (A838-PCB-001 (DrillDrawing).pdf)    |

## 8.4 PCB Layout

Gerber files are available on the EVM page for download.

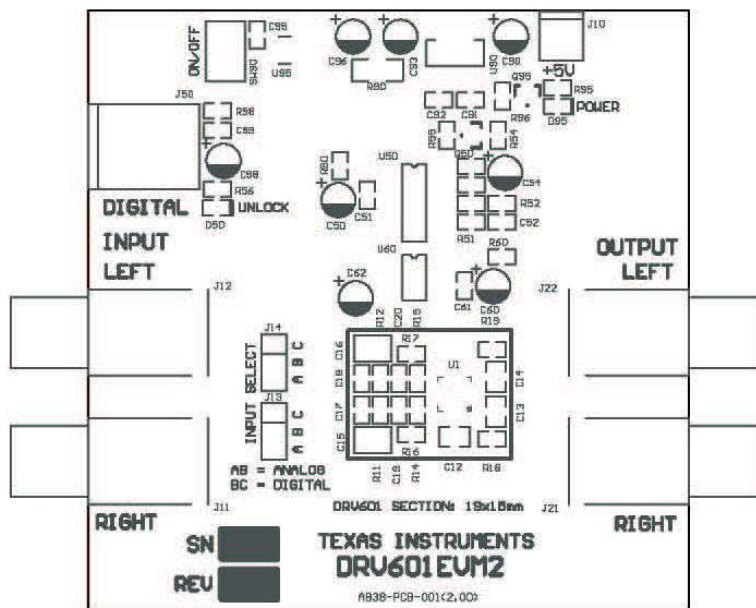


Figure 22. DRV601EVM2 PCB Component Placement Top

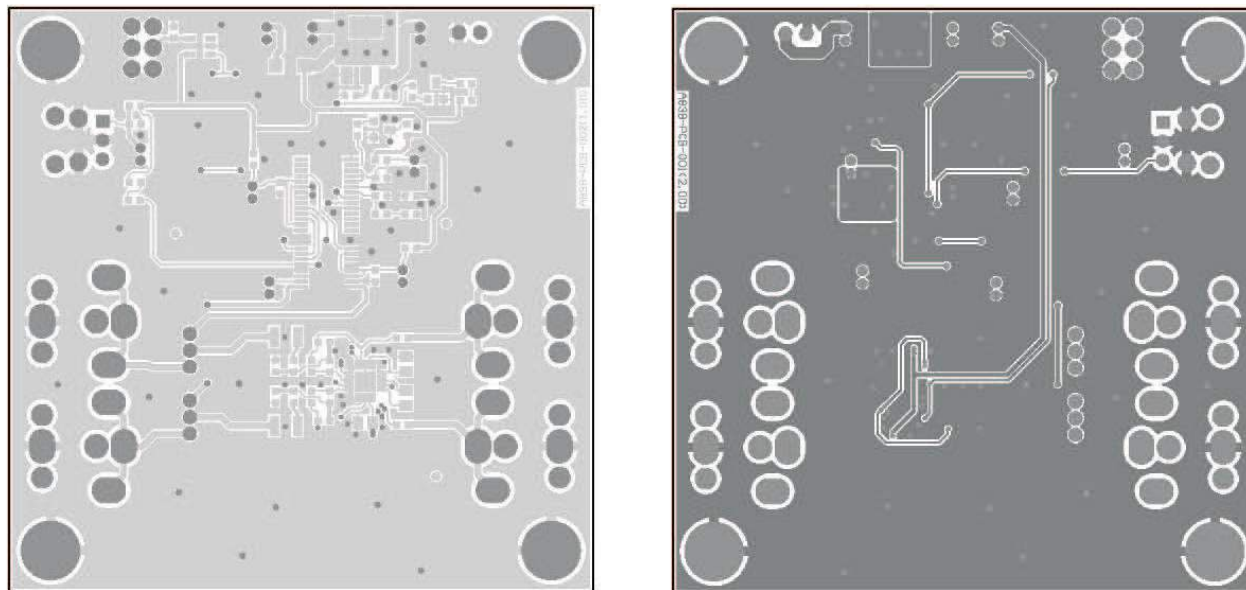


Figure 23. DRV601EVM2 PCB Top and Bottom Layers

## EVALUATION BOARD/KIT IMPORTANT NOTICE

Texas Instruments (TI) provides the enclosed product(s) under the following conditions:

This evaluation board/kit is intended for use for **ENGINEERING DEVELOPMENT, DEMONSTRATION, OR EVALUATION PURPOSES ONLY** and is not considered by TI to be a finished end-product fit for general consumer use. Persons handling the product(s) must have electronics training and observe good engineering practice standards. As such, the goods being provided are not intended to be complete in terms of required design-, marketing-, and/or manufacturing-related protective considerations, including product safety and environmental measures typically found in end products that incorporate such semiconductor components or circuit boards. This evaluation board/kit does not fall within the scope of the European Union directives regarding electromagnetic compatibility, restricted substances (RoHS), recycling (WEEE), FCC, CE or UL, and therefore may not meet the technical requirements of these directives or other related directives.

Should this evaluation board/kit not meet the specifications indicated in the User's Guide, the board/kit may be returned within 30 days from the date of delivery for a full refund. **THE FOREGOING WARRANTY IS THE EXCLUSIVE WARRANTY MADE BY SELLER TO BUYER AND IS IN LIEU OF ALL OTHER WARRANTIES, EXPRESSED, IMPLIED, OR STATUTORY, INCLUDING ANY WARRANTY OF MERCHANTABILITY OR FITNESS FOR ANY PARTICULAR PURPOSE.**

The user assumes all responsibility and liability for proper and safe handling of the goods. Further, the user indemnifies TI from all claims arising from the handling or use of the goods. Due to the open construction of the product, it is the user's responsibility to take any and all appropriate precautions with regard to electrostatic discharge.

**EXCEPT TO THE EXTENT OF THE INDEMNITY SET FORTH ABOVE, NEITHER PARTY SHALL BE LIABLE TO THE OTHER FOR ANY INDIRECT, SPECIAL, INCIDENTAL, OR CONSEQUENTIAL DAMAGES.**

TI currently deals with a variety of customers for products, and therefore our arrangement with the user **is not exclusive**.

TI assumes **no liability for applications assistance, customer product design, software performance, or infringement of patents or services described herein.**

Please read the User's Guide and, specifically, the Warnings and Restrictions notice in the User's Guide prior to handling the product. This notice contains important safety information about temperatures and voltages. For additional information on TI's environmental and/or safety programs, please contact the TI application engineer or visit [www.ti.com/esh](http://www.ti.com/esh).

No license is granted under any patent right or other intellectual property right of TI covering or relating to any machine, process, or combination in which such TI products or services might be or are used.

### FCC Warning

This evaluation board/kit is intended for use for **ENGINEERING DEVELOPMENT, DEMONSTRATION, OR EVALUATION PURPOSES ONLY** and is not considered by TI to be a finished end-product fit for general consumer use. It generates, uses, and can radiate radio frequency energy and has not been tested for compliance with the limits of computing devices pursuant to part 15 of FCC rules, which are designed to provide reasonable protection against radio frequency interference. Operation of this equipment in other environments may cause interference with radio communications, in which case the user at his own expense will be required to take whatever measures may be required to correct this interference.

### EVM WARNINGS AND RESTRICTIONS

It is important to operate this EVM within the input voltage range of 1.8 V to 4.5 V and the output voltage range of 2 Vrms.

Exceeding the specified input range may cause unexpected operation and/or irreversible damage to the EVM. If there are questions concerning the input range, please contact a TI field representative prior to connecting the input power.

Applying loads outside of the specified output range may result in unintended operation and/or possible permanent damage to the EVM. Please consult the EVM User's Guide prior to connecting any load to the EVM output. If there is uncertainty as to the load specification, please contact a TI field representative.

During normal operation, some circuit components may have case temperatures greater than 85°C. The EVM is designed to operate properly with certain components above 85°C as long as the input and output ranges are maintained. These components include but are not limited to linear regulators, switching transistors, pass transistors, and current sense resistors. These types of devices can be identified using the EVM schematic located in the EVM User's Guide. When placing measurement probes near these devices during operation, please be aware that these devices may be very warm to the touch.

Mailing Address: Texas Instruments, Post Office Box 655303, Dallas, Texas 75265  
Copyright 2008, Texas Instruments Incorporated



## IMPORTANT NOTICE

Texas Instruments Incorporated and its subsidiaries (TI) reserve the right to make corrections, modifications, enhancements, improvements, and other changes to its products and services at any time and to discontinue any product or service without notice. Customers should obtain the latest relevant information before placing orders and should verify that such information is current and complete. All products are sold subject to TI's terms and conditions of sale supplied at the time of order acknowledgment.

TI warrants performance of its hardware products to the specifications applicable at the time of sale in accordance with TI's standard warranty. Testing and other quality control techniques are used to the extent TI deems necessary to support this warranty. Except where mandated by government requirements, testing of all parameters of each product is not necessarily performed.

TI assumes no liability for applications assistance or customer product design. Customers are responsible for their products and applications using TI components. To minimize the risks associated with customer products and applications, customers should provide adequate design and operating safeguards.

TI does not warrant or represent that any license, either express or implied, is granted under any TI patent right, copyright, mask work right, or other TI intellectual property right relating to any combination, machine, or process in which TI products or services are used. Information published by TI regarding third-party products or services does not constitute a license from TI to use such products or services or a warranty or endorsement thereof. Use of such information may require a license from a third party under the patents or other intellectual property of the third party, or a license from TI under the patents or other intellectual property of TI.

Reproduction of TI information in TI data books or data sheets is permissible only if reproduction is without alteration and is accompanied by all associated warranties, conditions, limitations, and notices. Reproduction of this information with alteration is an unfair and deceptive business practice. TI is not responsible or liable for such altered documentation. Information of third parties may be subject to additional restrictions.

Resale of TI products or services with statements different from or beyond the parameters stated by TI for that product or service voids all express and any implied warranties for the associated TI product or service and is an unfair and deceptive business practice. TI is not responsible or liable for any such statements.

TI products are not authorized for use in safety-critical applications (such as life support) where a failure of the TI product would reasonably be expected to cause severe personal injury or death, unless officers of the parties have executed an agreement specifically governing such use. Buyers represent that they have all necessary expertise in the safety and regulatory ramifications of their applications, and acknowledge and agree that they are solely responsible for all legal, regulatory and safety-related requirements concerning their products and any use of TI products in such safety-critical applications, notwithstanding any applications-related information or support that may be provided by TI. Further, Buyers must fully indemnify TI and its representatives against any damages arising out of the use of TI products in such safety-critical applications.

TI products are neither designed nor intended for use in military/aerospace applications or environments unless the TI products are specifically designated by TI as military-grade or "enhanced plastic." Only products designated by TI as military-grade meet military specifications. Buyers acknowledge and agree that any such use of TI products which TI has not designated as military-grade is solely at the Buyer's risk, and that they are solely responsible for compliance with all legal and regulatory requirements in connection with such use.

TI products are neither designed nor intended for use in automotive applications or environments unless the specific TI products are designated by TI as compliant with ISO/TS 16949 requirements. Buyers acknowledge and agree that, if they use any non-designated products in automotive applications, TI will not be responsible for any failure to meet such requirements.

Following are URLs where you can obtain information on other Texas Instruments products and application solutions:

### Products

|                             |  |
|-----------------------------|--|
| Amplifiers                  | <a href="http://amplifier.ti.com">amplifier.ti.com</a>             |
| Data Converters             | <a href="http://dataconverter.ti.com">dataconverter.ti.com</a>     |
| DSP                         | <a href="http://dsp.ti.com">dsp.ti.com</a>                         |
| Clocks and Timers           | <a href="http://www.ti.com/clocks">www.ti.com/clocks</a>           |
| Interface                   | <a href="http://interface.ti.com">interface.ti.com</a>             |
| Logic                       | <a href="http://logic.ti.com">logic.ti.com</a>                     |
| Power Mgmt                  | <a href="http://power.ti.com">power.ti.com</a>                     |
| Microcontrollers            | <a href="http://microcontroller.ti.com">microcontroller.ti.com</a> |
| RFID                        | <a href="http://www.ti-rfid.com">www.ti-rfid.com</a>               |
| RF/IF and ZigBee® Solutions | <a href="http://www.ti.com/lprf">www.ti.com/lprf</a>               |

### Applications

|                    |  |
|--------------------|--|
| Audio              | <a href="http://www.ti.com/audio">www.ti.com/audio</a>                   |
| Automotive         | <a href="http://www.ti.com/automotive">www.ti.com/automotive</a>         |
| Broadband          | <a href="http://www.ti.com/broadband">www.ti.com/broadband</a>           |
| Digital Control    | <a href="http://www.ti.com/digitalcontrol">www.ti.com/digitalcontrol</a> |
| Medical            | <a href="http://www.ti.com/medical">www.ti.com/medical</a>               |
| Military           | <a href="http://www.ti.com/military">www.ti.com/military</a>             |
| Optical Networking | <a href="http://www.ti.com/opticalnetwork">www.ti.com/opticalnetwork</a> |
| Security           | <a href="http://www.ti.com/security">www.ti.com/security</a>             |
| Telephony          | <a href="http://www.ti.com/telephony">www.ti.com/telephony</a>           |
| Video & Imaging    | <a href="http://www.ti.com/video">www.ti.com/video</a>                   |
| Wireless           | <a href="http://www.ti.com/wireless">www.ti.com/wireless</a>             |

Mailing Address: Texas Instruments, Post Office Box 655303, Dallas, Texas 75265  
Copyright © 2008, Texas Instruments Incorporated