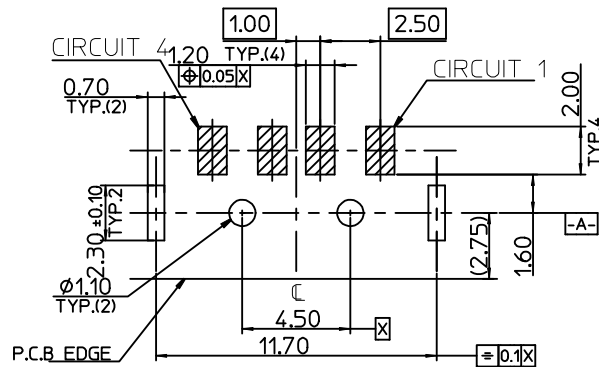
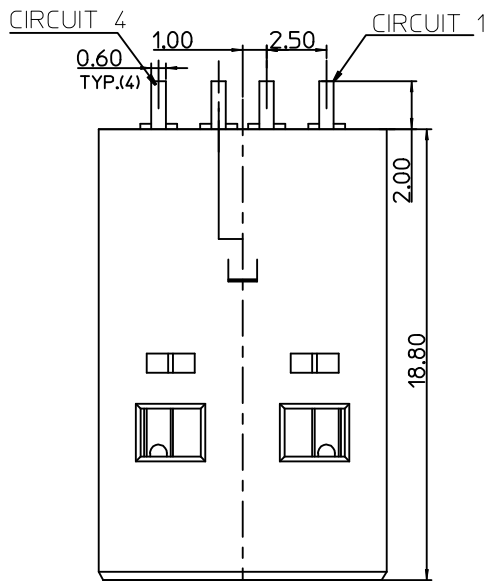
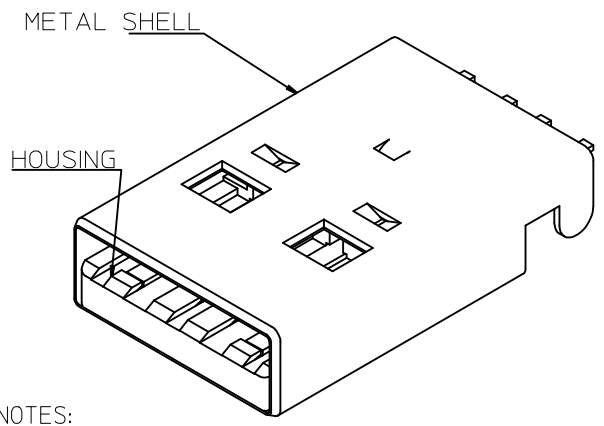
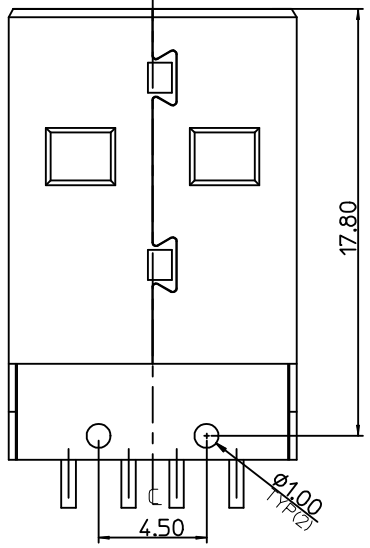
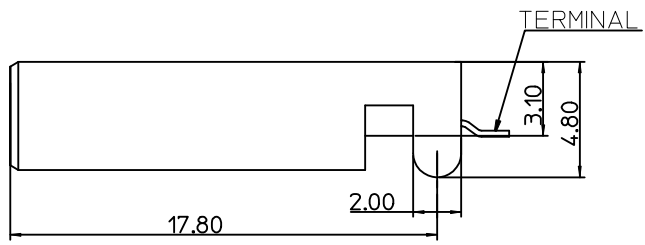
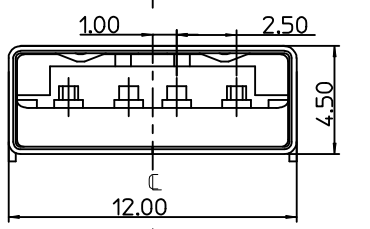


10 9 8 7 6 5 4 3 2 1



RECOMMENDED P.C.B LAYOUT
GENERAL TOLERANCE: ±0.05



- NOTES:
- MATERIAL:
HOUSING: LCP, GLASS FIBER FILLED, UL94V-0, COLOR: BLACK.
TERMINAL: BRASS
METAL SHELL: COLD ROLL STEEL
 - FINISH:
TERMINAL:
SELECTIVE GOLD(Au) IN CONTACT AREA
THICKNESS=30 MICROINCH MINIMUM.
SELECTIVE TIN(Sn), ALLOY IN SOLDER TAIL AREA
THICKNESS=120 MICROINCH MINIMUM.
UNDER PLATED: NICKEL(Ni), THICKNESS=50 MICROINCH MINIMUM.
METAL SHELL:
NICKEL(Ni), OVERALL
UNDER PLATE: COPPER(Cu), OVERALL
THICKNESS=50 MICROINCH MINIMUM.
 - RECOMMENDED PCB THICKNESS: 1.60±0.05mm
 - PRODUCT SPECIFICATION: REFERS TO PS-48037-001
 - PACKAGE SPECIFICATION REFERS TO PK-48037-210
 - TEST SUMMARY REFERS TO TS-48037-001
 - COPLANARITY TO BE 0.1mm MAX.
 - LEAD FREE AND ROHS COMPLIANCE.
 - DATE CODE: $\begin{matrix} xx & xx & x \\ | & | & | \\ \text{YEAR} & \text{WEEK} & \text{DAY} \end{matrix}$

REVISE EC NO: SH2016-0141 DRWN: FYANG05 2015/10/30 CHKD: APPR: RZHANG 2015/11/06	QUALITY SYMBOLS $\nabla_F = 0$ $\nabla_F = 0$ $\nabla_F = 0$	GENERAL TOLERANCES (UNLESS SPECIFIED) <table border="1"> <thead> <tr> <th></th> <th>mm</th> <th>INCH</th> </tr> </thead> <tbody> <tr> <td>4 PLACES</td> <td>± ---</td> <td>± ---</td> </tr> <tr> <td>3 PLACES</td> <td>± ---</td> <td>± ---</td> </tr> <tr> <td>2 PLACES</td> <td>± 0.25</td> <td>± ---</td> </tr> <tr> <td>1 PLACE</td> <td>± 0.25</td> <td>± ---</td> </tr> </tbody> </table> ANGULAR ± 3° DRAFT WHERE APPLICABLE MUST REMAIN WITHIN DIMENSIONS		mm	INCH	4 PLACES	± ---	± ---	3 PLACES	± ---	± ---	2 PLACES	± 0.25	± ---	1 PLACE	± 0.25	± ---	DIMENSION STYLE MM ONLY DRAWN BY: CHERRY DATE: 2005/05/25 CHECKED BY:	SCALE 1:1 TITLE USB A TYPE PLUG WITH STR SHELL LEG(4.8MM)SMT (LEAD-FREE VERSION)	DESIGN UNITS THIRD ANGLE PROJECTION
		mm	INCH																	
	4 PLACES	± ---	± ---																	
	3 PLACES	± ---	± ---																	
2 PLACES	± 0.25	± ---																		
1 PLACE	± 0.25	± ---																		
APPROVED BY: WILSON DATE: 2005/05/26 MATERIAL NO. 48037-2100	MOLEX INCORPORATED DOCUMENT NO. SD-48037-003	SHEET NO. 1 OF 1																		
SIZE A3 THIS DRAWING CONTAINS INFORMATION THAT IS PROPRIETARY TO MOLEX INCORPORATED AND SHOULD NOT BE USED WITHOUT WRITTEN PERMISSION																				

9 8 7 6 5 4 3 2 1