



SPECIFICATIONS

Model	Stroke mm	Max Energy Absorption J(kgf·m)	Max Equiv. Mass kg(kgf)	Range of Impact Rate m/s	Allowable Eccentric Angle °
FA-2725FA-S	25	79.3(8.1)	500(500)	0.15~3.0	±2.5

COMMON SPECIFICATIONS

Max Drag N(kgf)	Max Cycle Rate cycle/min	Max Energy Absorption per min. J/min(kgf·m/min)	Extension Force N(kgf)	Operating Temp. C°	Mass g
7,200	60	539(55)	44.2(4.51) or lower	-5~70	402

PRECAUTIONS FOR USE

- Do not use this product without carefully reading the attached owner's manual.
- We recommend that you use it with an external stopper (Stopper nut OP-020FB).
- Ensure that sufficient mounting strength is secured for this product.
(As a guideline, it should be 2 to 3 times the maximum drag listed in the catalogue.)
- Do not use this product in a vacuum or a location where it may come in contact with oil.
- Ensure that an eccentric load is not applied to the soft absorber.
- The urethane caps are consumables. Please replace them when necessary.

ADJUSTMENT METHOD

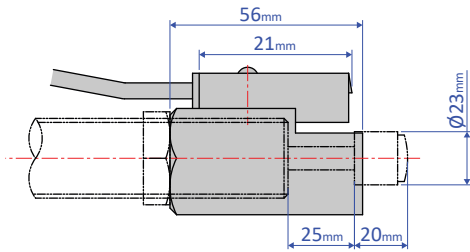
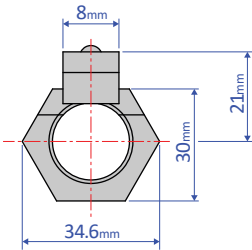
- To adjust, turn the adjustment knob located at the bottom of the main unit.
- Because the adjustment can be done in an analog manner, a value between two integers on the indicator can be set.
- Once the adjustment is complete, secure with a lock screw using a hex wrench.

OPTIONAL PARTS

Holder with a switch OP-030FB

OP-030FB-2 (with stopper function)

- Although a holder with a switch can be ordered on its own, we strongly recommend ordering one with the main unit. Please include the main unit's model number when placing an order.

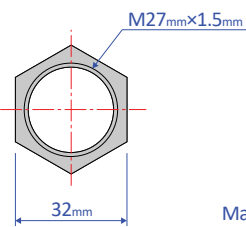
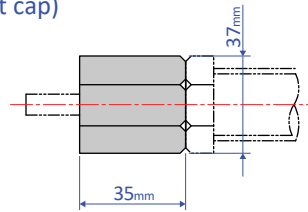


Mass 107g

Stopper nut OP-020FB

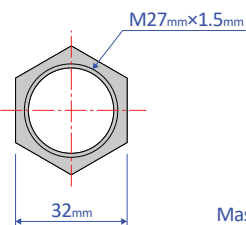
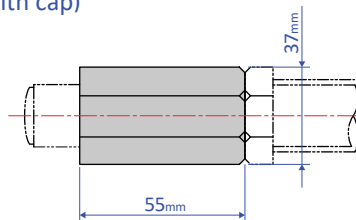
- Adjust so that it stops 1 mm before the stroke end, and fasten with the main unit's nut until secured.

OP-020FB-S (without cap)



Mass 90g

OP-020FB-C (with cap)



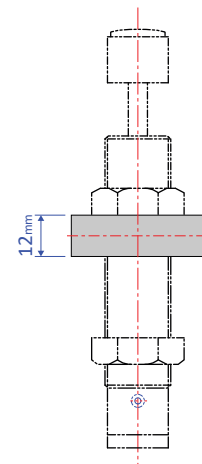
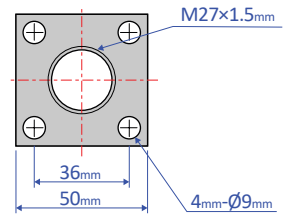
Mass 137g

Note: When attaching, make sure that the side without a bearing chamfer is the impact surface.

Standard nuts are sold separately as well - M27 Nut

Square flange OP-040FB

- Once the attachment site is determined, use the main unit's nut to securely fasten in place.



Mass 157g