

LTM4678 Dual 25A or Single 50A µModule Regulator with Digital Power System Management 5x LTM4678; 250A

DESCRIPTION

Demonstration circuit 2638A-D is a high efficiency, high density, µModule regulator with 4.5V to 16V input range. The output voltage is adjustable from 0.5V to 3.3V, and it can supply 250A maximum load current. The demo board has five [LTM®4678](#) µModule® regulators, and the LTM4678 is a dual 25A or single 50A step-down regulator with PMBus power system management. Please see LTM4678 data sheet for more detailed information.

DC2638A-D powers up to default settings and produce power based on configuration resistors without the need for any serial bus communication. This allows easy evaluation of the DC/DC converter. To fully explore the extensive power system management features of the part, download

the GUI software LTpowerPlay® onto your PC and use ADI's I²C/SMBus/PMBus dongle DC1613A to connect to the board. LTpowerPlay allows the user to reconfigure the part on-the-fly and store the configuration in EEPROM, view telemetry of voltage, current, temperature and fault status.

GUI Download

The software can be downloaded from:

[LTpowerPlay](#)

For more details and instructions of LTpowerPlay, please refer to LTpowerPlay GUI for LTM4678 Quick Start Guide.

[Design files for this circuit board are available.](#)

All registered trademarks and trademarks are the property of their respective owners.

PERFORMANCE SUMMARY

Specifications are at T_A = 25°C

PARAMETER	CONDITIONS	VALUE
Input Voltage Range		4.5V to 16V
Output Voltage, V _{OUT}	V _{IN} = 4.5V-16V, I _{OUT} = 0A to 250A	0.5V to 3.3V, Default: 1.0V
Maximum Output Current, I _{OUT}	V _{IN} = 4.5V-16V, V _{OUT} = 0.5V to 3.3V	250A
Typical Efficiency	V _{IN} = 12V, V _{OUT} = 1.0V, I _{OUT} = 250A	86% (See Figure 5)
Default Switching Frequency		350kHz

BOARD PHOTO

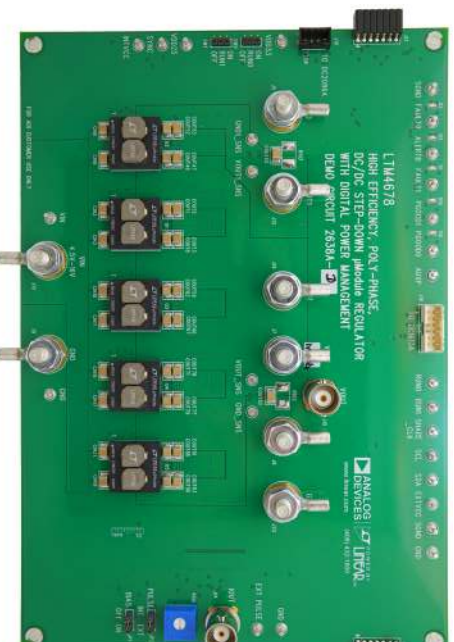


Figure 1. 5x LTM4678; 250A DC2638A-D Demo Circuit

DEMO MANUAL DC2638A-D

QUICK START PROCEDURE

Table 1. LTM4678 Demo Boards for up to 250A Point-of-Load Regulation

MAXIMUM OUTPUT CURRENT	NUMBER OF OUTPUTS	NUMBER OF LTM4678 μ Module REGULATORS ON THE BOARD	DEMO BOARD NUMBER
25A	2	1	DC2552A
50A	1	1	DC2570A
100A	1	2	DC2638A-A
150A	1	3	DC2638A-B
200A	1	4	DC2638A-C
250A	1	5	DC2638A-D

Demonstration circuit 2638A-D is easy to set up to evaluate the performance of the LTM4678EY. Refer to Figure 2 for the proper measurement equipment setup and follow the procedure below.

1. With power off, connect the input power supply to V_{IN} (4.5V–16V) and GND (input return).
2. Connect the 1.0V output load between V_{OUT} and GND (Initial load: no load).
3. Connect the DVMs to the input and output. Set default jumper position: SW0: ON; SW1: ON.
4. Turn on the input power supply and check for the proper output voltage. V_{OUT} should be 1.0V \pm 0.5%.
5. Once the proper output voltages are established, adjust the load within the operating range and observe the output voltage regulation, ripple voltage and other parameters.

6. Connect the dongle and control the output voltage from the GUI. See “LTPowerPlay GUI for the LTM4678 Quick Start Guide” for details.

Note: When measuring the output or input voltage ripple, do not use the long ground lead on the oscilloscope probe. See Figure 3 for the proper scope probe technique. Short, stiff leads need to be soldered to the (+) and (–) terminals of an output capacitor. The probe’s ground ring needs to touch the (–) lead and the probe tip needs to touch the (+) lead.

Connecting a PC to DC2638A-D

You can use a PC to reconfigure the power management features of the LTM4678 such as: nominal V_{OUT} , margin set points, OV/UV limits, temperature fault limits, sequencing parameters, the fault log, fault responses, GPIOs and other functionalities. The DC1613A dongle may be plugged when V_{IN} is present.

QUICK START PROCEDURE

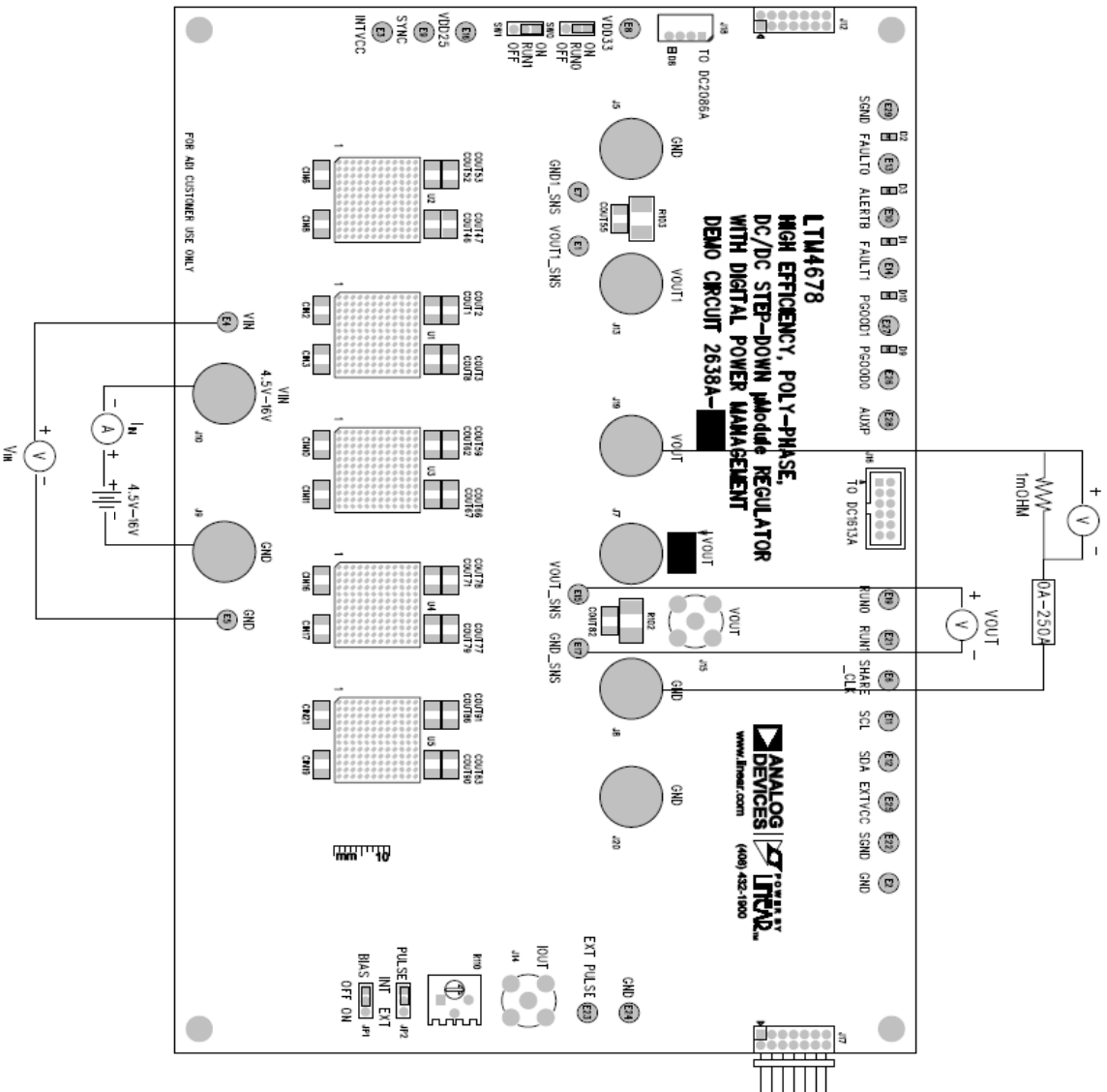


Figure 2. Proper Measurement Equipment Setup

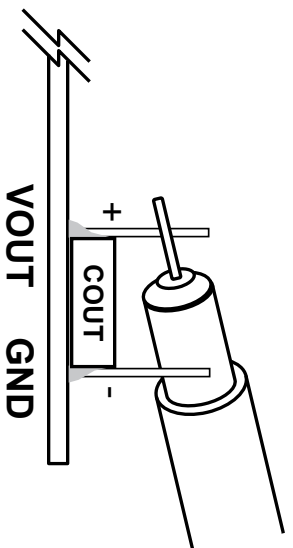


Figure 3. Measuring Output Voltage Ripple

QUICK START PROCEDURE

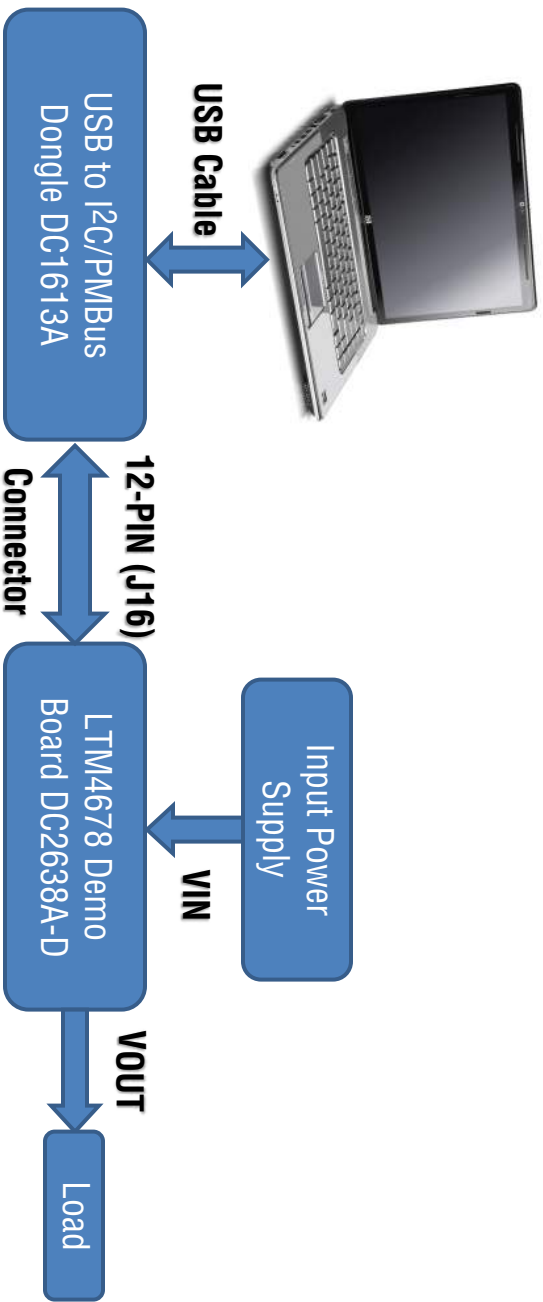


Figure 4. Demo Setup with PC

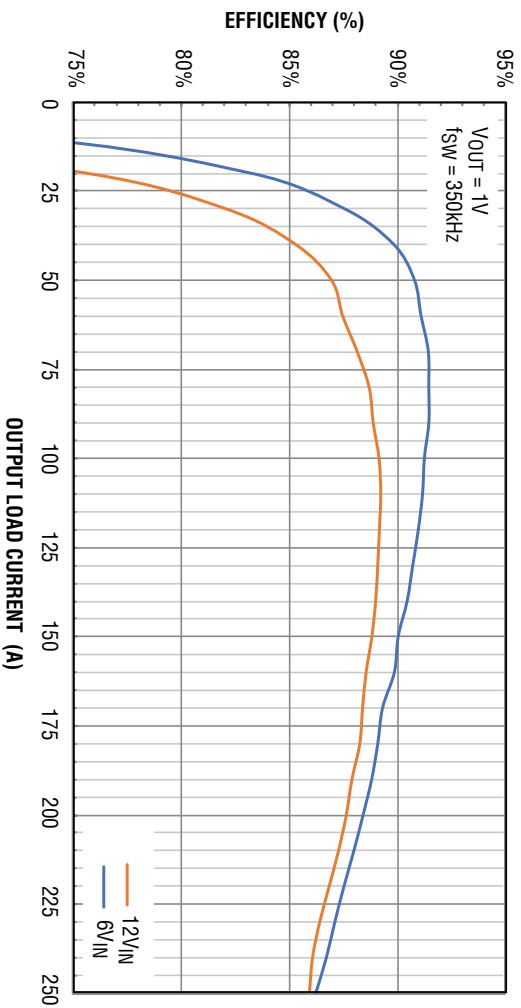


Figure 5. Efficiency vs Load Current

QUICK START PROCEDURE

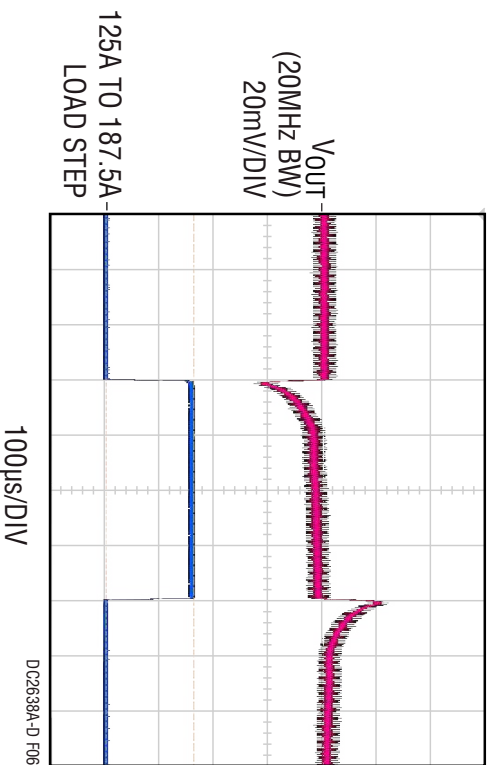


Figure 6. Output Voltage V_{OUT} vs Load Current @ $V_{IN} = 12V$, $V_{OUT} = 1V$, $f_{sw} = 350kHz$

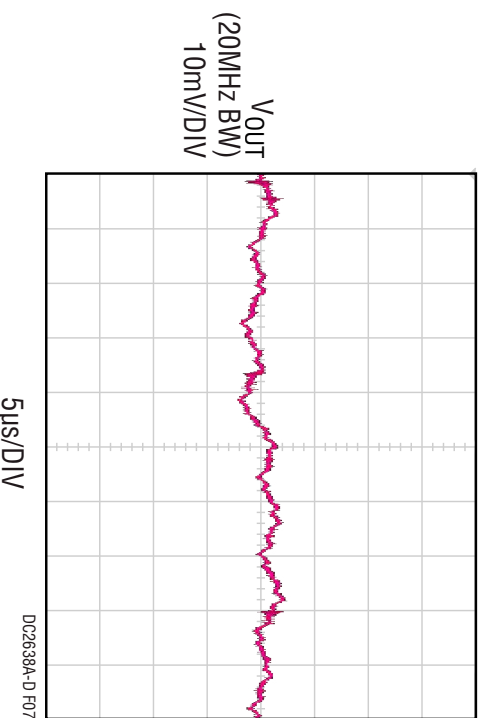


Figure 7. Output Voltage Ripple @ $V_{IN} = 12V$, $V_{OUT} = 1V$, $I_{OUT} = 100A$, $f_{sw} = 350kHz$

QUICK START PROCEDURE

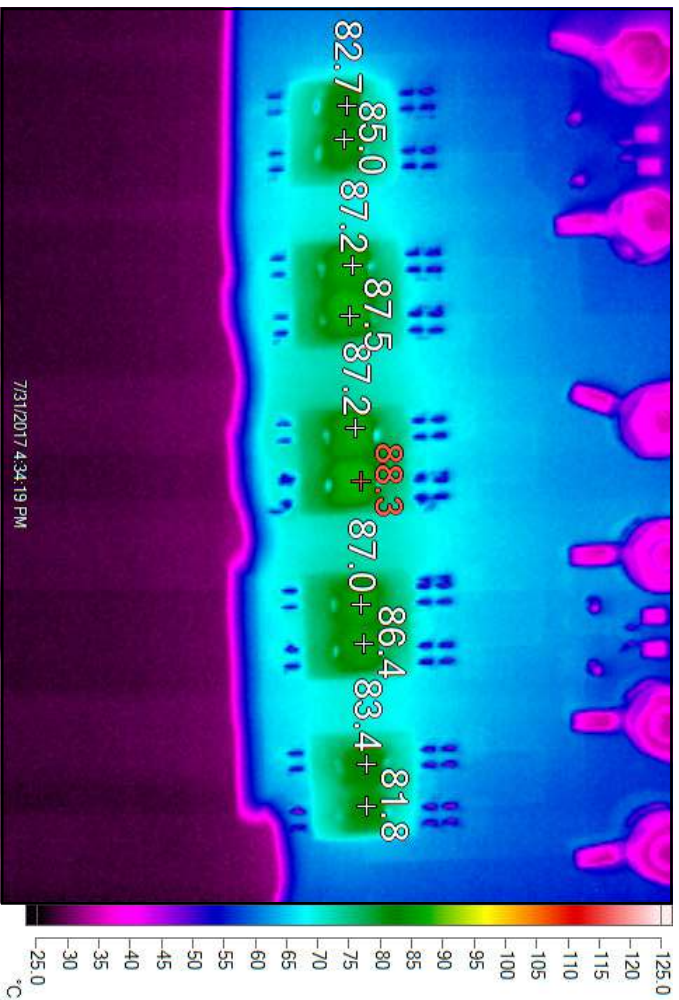


Figure 8. Thermal @ $V_{IN} = 12V$, $V_{OUT} = 1.0V$, $I_{OUT} = 140A$,
 $T_A = 25^\circ C$, No Airflow

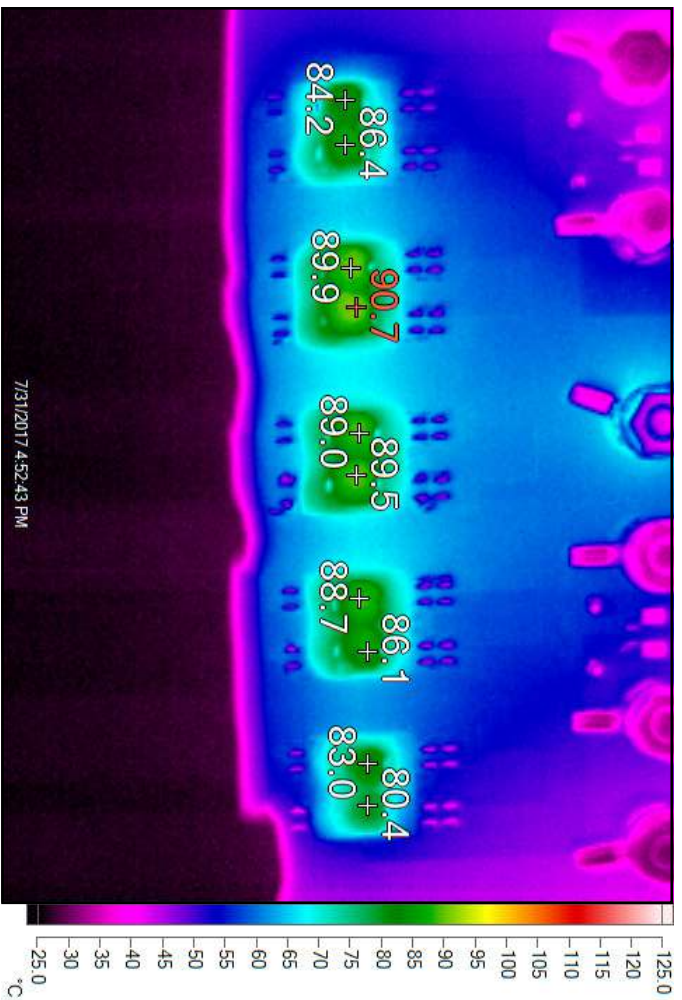


Figure 9. Thermal @ $V_{IN} = 12V$, $V_{OUT} = 1.0V$, $I_{OUT} = 220A$,
 $T_A = 25^\circ C$, 450LPM Airflow

LTPowerPLAY SOFTWARE GUI

LTPowerPlay is a powerful Windows-based development environment that supports Analog Devices power system management ICs and μ Modules, including the LTM4675, LTM4676, LTM4677, LTM4678, LTC3880, LTC3882 and LTC3883. The software supports a variety of different tasks. You can use LTPowerPlay to evaluate Analog Devices ICs by connecting to a demo board system. LTPowerPlay can also be used in an offline mode (with no hardware present) in order to build a multichip configuration file that can be saved and reloaded at a later time. LTPowerPlay provides unprecedented diagnostic and debug features. It becomes a valuable diagnostic tool during board bringup to program or tweak the power management scheme in a system, or to diagnose power issues when bringing up rails. LTPowerPlay utilizes the

DC1613A USB-to-SMBus controller to communicate with one of many potential targets, including the LTM4675, LTM4676, LTM4677, LTM4678, LTC3880, LTC3882, LTC3883's demo system, or a customer board. The software also provides an automatic update feature to keep the software current with the latest set of device drivers and documentation. The LTPowerPlay software can be downloaded from:

[LTPowerPlay](#)

To access technical support documents for ADI Digital Power Products visit the LTPowerPlay Help menu. Online help also available through the LTPowerPlay.

The screenshot displays the LTPowerPlay software interface. The top window shows the 'Rail A 1' configuration page with various tabs like 'Setup', 'All Global', and 'All Page'. The 'Input Voltage' section is highlighted, showing a table of parameters for different rails:

Input Voltage	Value	Unit
VIN_OV_FAULT_LIMIT	15.5000	V
VIN_OV_WARN_LIMIT	6.2892	V
VIN_OV	6.9000	V
VIN_OVF	6.0000	mOhms
VIN_OVF	100.000	mOhms

The bottom window shows the 'Telemetry - Rail A 1' page, displaying real-time data for various parameters:

Parameter	Value	Unit
Telemetry - PWM	342.0	KHz
Telemetry - Input Voltage	12.7091	V
Telemetry - Peak-LTC	12.0158	V
Telemetry - Input Current	-0.5501	A
Telemetry - Output Voltage (V)	1.0020	V
Telemetry - Output Current	210.205	mA
Telemetry - Peak-LTC	412.983	mA
Telemetry - Output Percent (%)	+0.20	% above/below V...
Telemetry - Output Power	390.000	%
Telemetry - Temperature	27.7	°C
Telemetry - Read Voltage	0.148	V
Telemetry - Read Current	0.411	V
Telemetry - Generated	0.411	V

Other visible components include a 'Rail A ϕ 1' waveform plot, a 'READ_VOUT (Rail Progress in System)' table, and a 'READ_VOUT' plot showing a square wave signal.

Figure 10. LTPowerPlay Main Interface

LTPowerPLAY QUICK START PROCEDURE

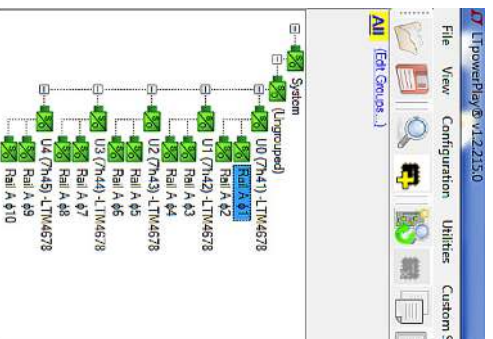
The following procedure describes how to use LTPowerPlay to monitor and change the settings of LTM4678.

1. Download and install the LTPowerPlay GUI:

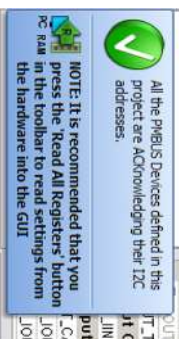
LTPowerPlay

2. Launch the LTPowerPlay GUI.

- a. The GUI should automatically identify the DC2638A-D. The system tree on the left hand side should look like this:



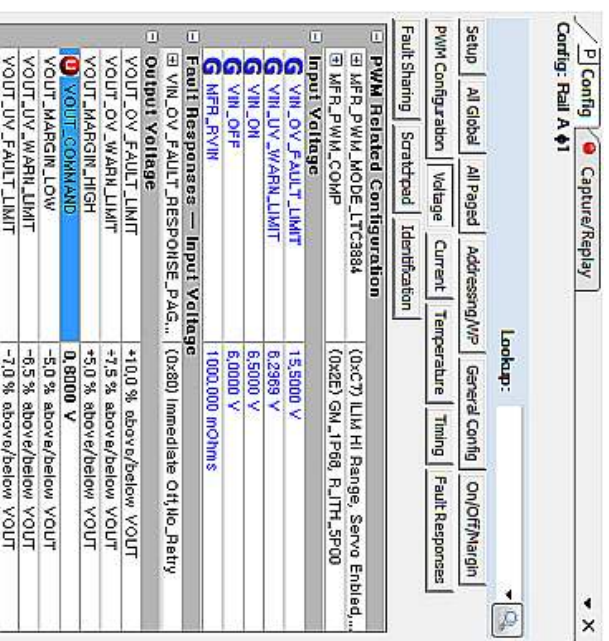
- b. A green message box shows for a few seconds in the lower left hand corner, confirming that LTM4678 is communicating:



- c. In the Toolbar, click the “R” (RAM to PC) icon to read the RAM from the LTM4678. This reads the configuration from the RAM of LTM4678 and loads it into the GUI.



- d. If you want to change the output voltage to a different value, like 0.8V. In the Config tab, type in 0.8 in the VOUT_COMMAND box, like this:



- Then, click the “W” (PC to RAM) icon to write these register values to the LTM4678. After finishing this step, you will see the output voltage will change to 0.8V.



If the write is successful, you will see the following message:

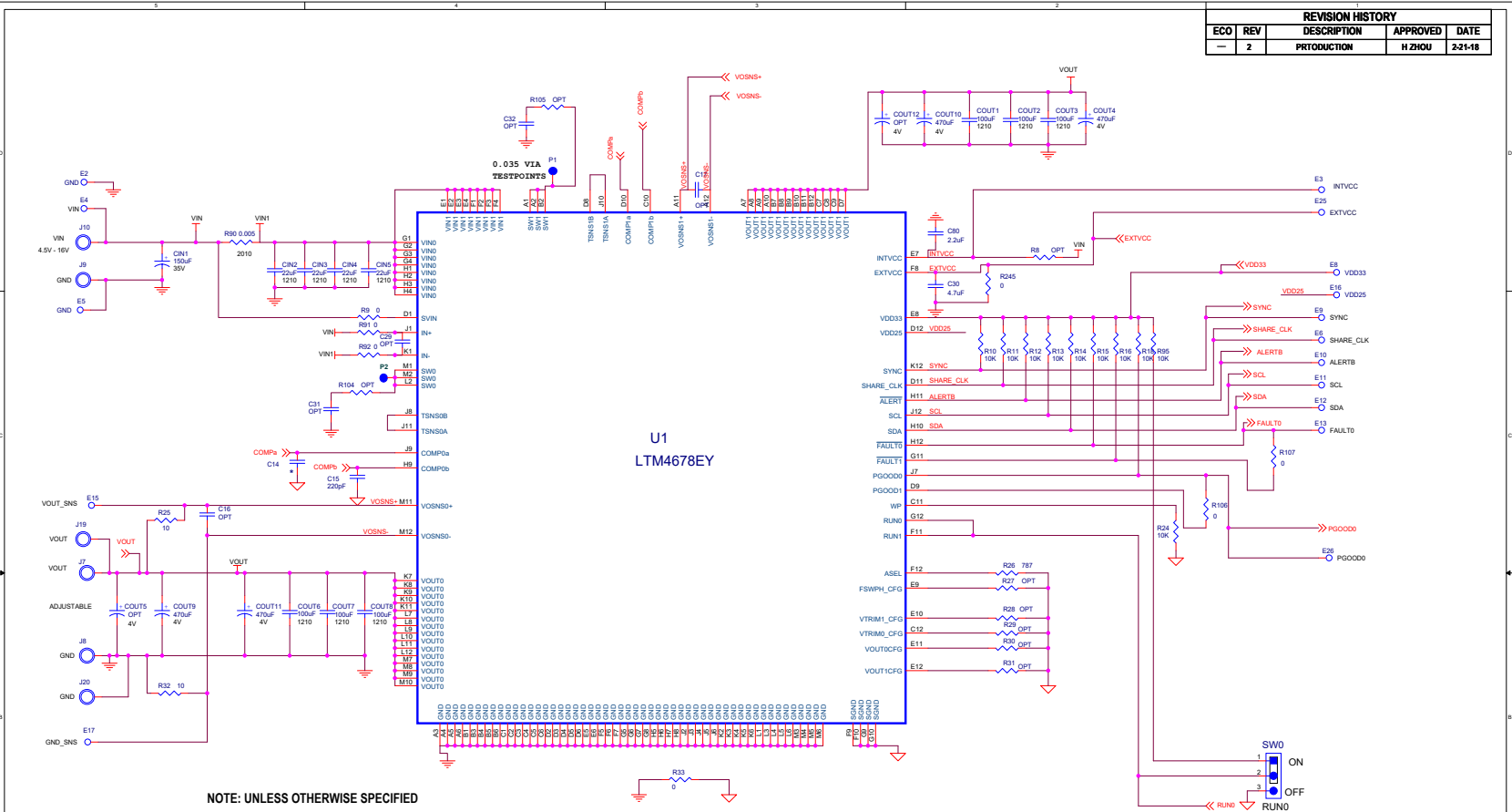


- e. You can save the changes into the NVM. In the tool bar, click “RAM to NVM” button, as following



- f. Save the demo board configuration to a (*.proj) file. Click the Save icon and save the file. Name it whatever you want.

REVISION HISTORY				
ECO	REV	DESCRIPTION	APPROVED	DATE
-	2	PRODUCTION	H ZHOU	2/21/18



NOTE: UNLESS OTHERWISE SPECIFIED
1. ALL RESISTORS AND CAPACITORS ARE 0603.

ASSY	Module	Iout	C14	CIN10, 11, 12, 13	CIN14, 15, 16, 17	CIN18, 19, 20, 21	COUT60, 61, 64, 63	COUT72, 73, 75, 80	COUT84, 87, 88, 93	COUT58, 59, 62, 65, 66, 67	COUT70, 71, 74, 77, 78, 79	COUT82, 83, 86, 89, 90, 91
-A	U1,U2	100A	10nF	OPT	OPT	OPT	OPT	OPT	OPT	OPT	OPT	OPT
-B	U1,U2,U3	150A	12nF	22uF	OPT	OPT	470uF	OPT	OPT	100uF	OPT	OPT
-C	U1,U2,U3,U4	Up to 200A	18nF	22uF	22uF	OPT	470uF	470uF	OPT	100uF	100uF	OPT
-D	U1,U2,U3,U4,U5	Up to 250A	27nF	22uF	22uF	22uF	470uF	470uF	470uF	100uF	100uF	100uF

*WHEN VIN < 5.75V, SHORT INTVCC to VIN WITH R8=R135=R158=R188=R231=0
*WHEN EXTVCC IS USED, R245=OPEN

CUSTOMER NOTICE

ANALOG DEVICES HAS MADE A BEST EFFORT TO DESIGN A CIRCUIT THAT MEETS CUSTOMER-SPECIFIED SPECIFICATIONS. HOWEVER, IT REMAINS THE CUSTOMER'S RESPONSIBILITY TO VERIFY PROPER AND RELIABLE OPERATION IN THE ACTUAL APPLICATION. COMPONENT DISTRIBUTION AND PRINTED CIRCUIT BOARD LAYOUT MAY SIGNIFICANTLY AFFECT CIRCUIT PERFORMANCE OR RELIABILITY. CONTACT ANALOG DEVICES APPLICATIONS ENGINEERING FOR ASSISTANCE.

APPROVALS

PCB DES.	HZ
APP ENG.	H Zhou

ANALOG DEVICES

www.analog.com

POWER BY LINEAR

www.linear.com Phone: (408)432-1800

TITLE: SCHEMATIC

HIGH EFFICIENCY, POLY-PHASE, DC/DC STEP-DOWN μModule REGULATOR WITH DIGITAL POWER MANAGEMENT

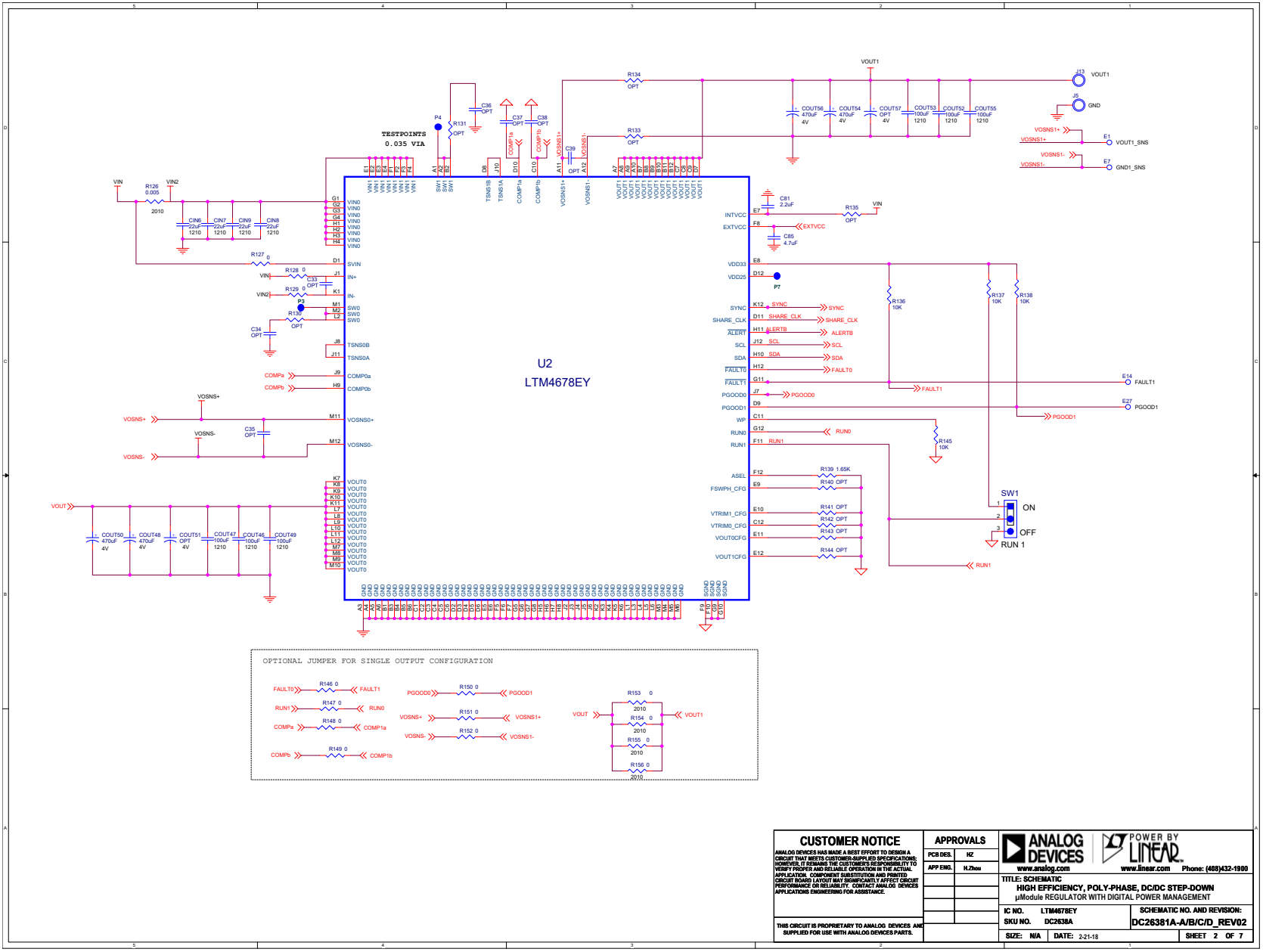
IC NO. LTM4678EY

SKU NO. DC2638A

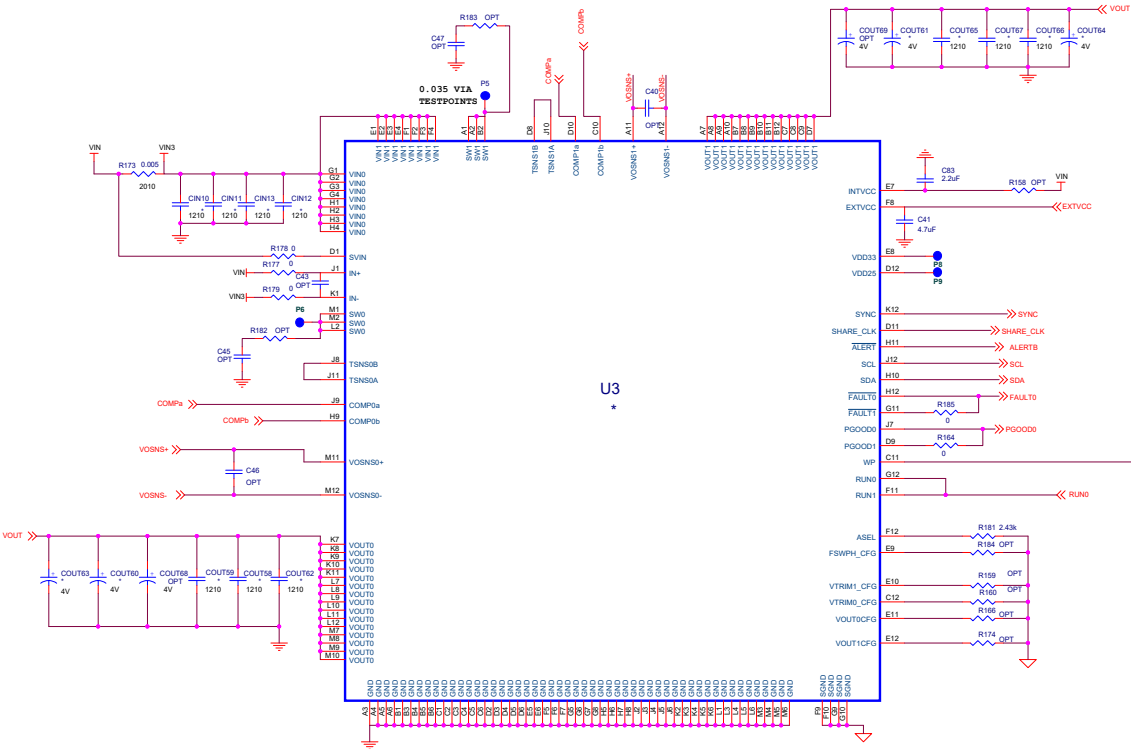
SIZE: N/A DATE: 2-21-18

SCHEMATIC NO. AND REVISION: DC2638A-A/B/C/D_REV02

SHEET 1 OF 7

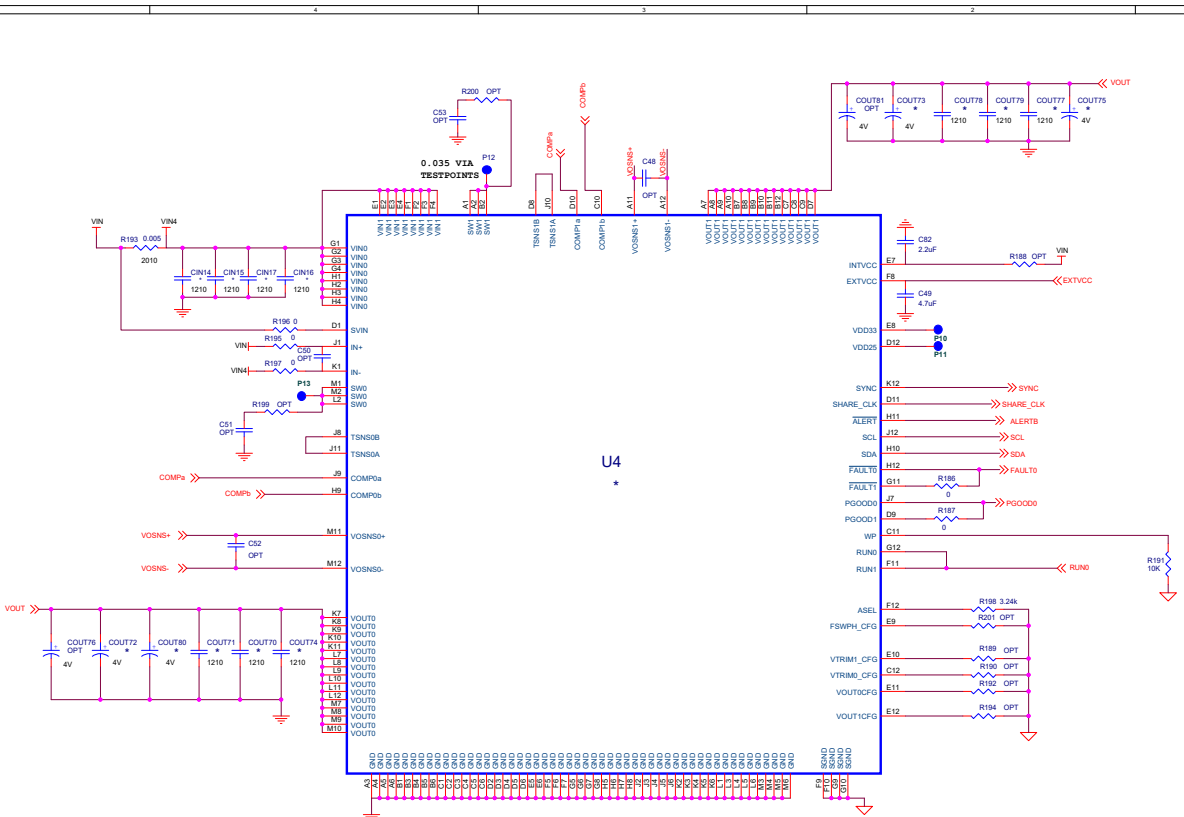


<p>CUSTOMER NOTICE</p> <p>ANALOG DEVICES HAS MADE A BEST EFFORT TO DESIGN A CIRCUIT THAT MEETS CUSTOMER-SUPPLIED SPECIFICATIONS. HOWEVER, IT REMAINS THE CUSTOMER'S RESPONSIBILITY TO VERIFY PROPER AND RELIABLE OPERATION IN THE ACTUAL APPLICATION. COMPONENT SUBSTITUTION AND PRINTED CIRCUIT BOARD LAYOUT MAY SIGNIFICANTLY AFFECT CIRCUIT PERFORMANCE OR RELIABILITY. CONTACT ANALOG DEVICES APPLICATIONS ENGINEERING FOR ASSISTANCE.</p> <p>THIS CIRCUIT IS PROPRIETARY TO ANALOG DEVICES AND SUPPLIED FOR USE WITH ANALOG DEVICES PARTS.</p>	<p>APPROVALS</p> <p>PCB DES: HZ</p> <p>APP ENG: HZ</p>		<p>ANALOG DEVICES</p> <p>POWER BY LINEAR</p> <p>www.analog.com www.linear.com Phone: (408)432-1900</p>	
	<p>TITLE: SCHEMATIC</p> <p>HIGH EFFICIENCY, POLY-PHASE, DC/DC STEP-DOWN μModule REGULATOR WITH DIGITAL POWER MANAGEMENT</p>			
	<p>IC NO: LTM4678EY</p> <p>SKU NO: DC2638A</p>	<p>SCHEMATIC NO. AND REVISION:</p> <p>DC26381A-A/B/C/D_REV02</p>		
	<p>SIZE: N/A</p> <p>DATE: 2/21/10</p>	<p>SHEET 2 OF 7</p>		

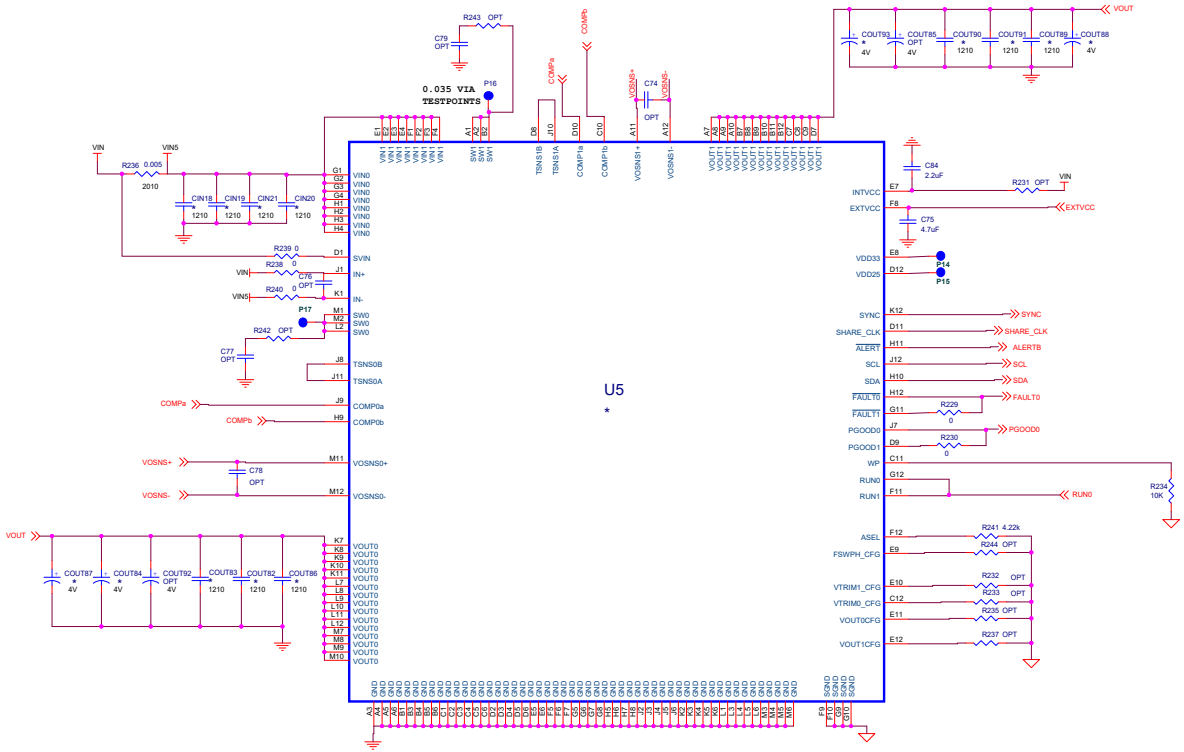


CUSTOMER NOTICE ANALOG DEVICES HAS MADE A BEST EFFORT TO DESIGN A CIRCUIT THAT MEETS CUSTOMER-SUPPLIED SPECIFICATIONS. HOWEVER, IT REMAINS THE CUSTOMER'S RESPONSIBILITY TO VERIFY PROPER AND RELIABLE OPERATION IN THE ACTUAL APPLICATION. COMPONENT SUBSTITUTION AND PRINTED CIRCUIT BOARD LAYOUT MAY SIGNIFICANTLY AFFECT CIRCUIT PERFORMANCE OR RELIABILITY. CONTACT ANALOG DEVICES APPLICATIONS ENGINEERING FOR ASSISTANCE.	APPROVALS PCB DES: HZ APP ENG: HZhou		ANALOG DEVICES www.analog.com	POWER BY LINEAR www.linear.com Phone: (408)432-1900
	TITLE: SCHEMATIC HIGH EFFICIENCY, POLY-PHASE, DC/DC STEP-DOWN μModule REGULATOR WITH DIGITAL POWER MANAGEMENT			
THIS CIRCUIT IS PROPRIETARY TO ANALOG DEVICES AND SUPPLIED FOR USE WITH ANALOG DEVICES PARTS.	IC NO: LTM478EY SKU NO: DC2638A		SCHEMATIC NO. AND REVISION: DC26381A-A/B/C/D_REV02	
	SIZE: N/A DATE: 2-21-18		SHEET 3 OF 7	

SCHEMATIC DIAGRAM

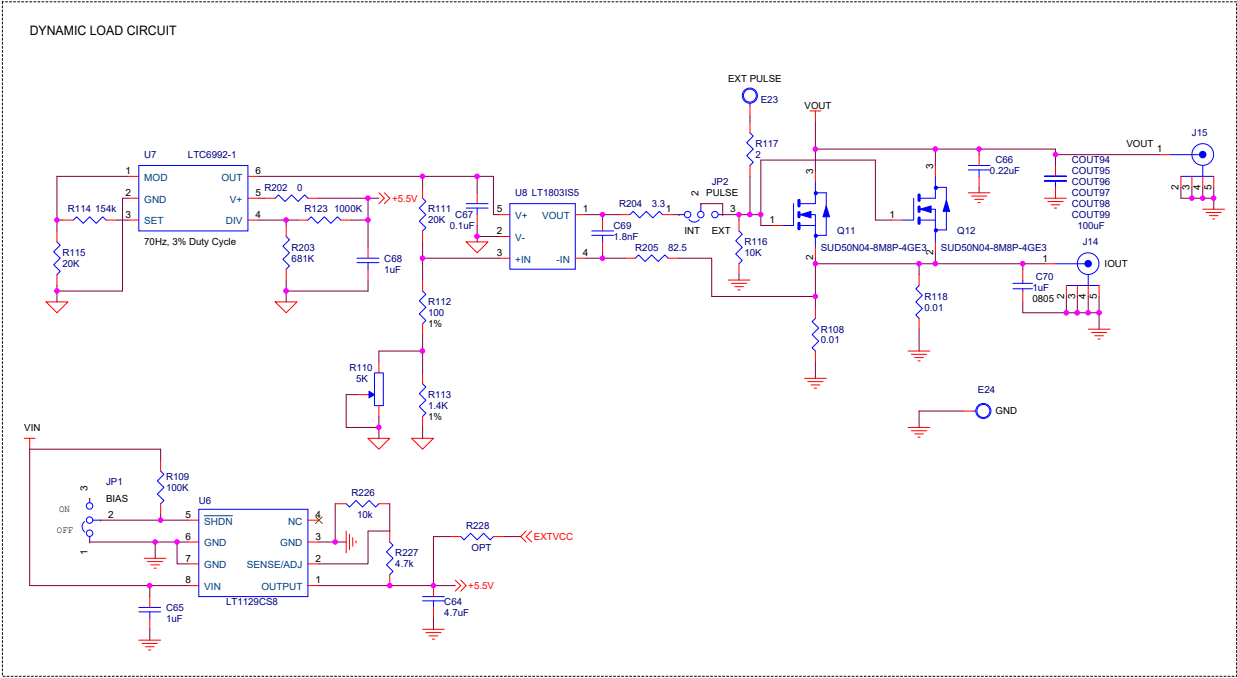


CUSTOMER NOTICE ANALOG DEVICES HAS MADE A BEST EFFORT TO DESIGN A CIRCUIT THAT MEETS CUSTOMER-SUPPLIED SPECIFICATIONS. HOWEVER, IT REMAINS THE CUSTOMER'S RESPONSIBILITY TO VERIFY PROPER AND RELIABLE OPERATION IN THE ACTUAL APPLICATION. COMPONENT SUBSTITUTION AND PRINTED CIRCUIT BOARD LAYOUT MAY SIGNIFICANTLY AFFECT CIRCUIT PERFORMANCE OR RELIABILITY. CONTACT ANALOG DEVICES APPLICATIONS ENGINEERING FOR ASSISTANCE.	APPROVALS PCB DES. HZ APP ENG. H.Zhou		
	www.analog.com www.linear.com Phone: (408)432-1800		
THIS CIRCUIT IS PROPRIETARY TO ANALOG DEVICES AND SUPPLIED FOR USE WITH ANALOG DEVICES PARTS.	TITLE: SCHEMATIC HIGH EFFICIENCY, POLY-PHASE, DC/DC STEP-DOWN μ Module REGULATOR WITH DIGITAL POWER MANAGEMENT		
	IC NO. LTM478EY SKU NO. DC2638A	SCHEMATIC NO. AND REVISION: DC26381A-A/B/C/D_REV02	
	SIZE: N/A DATE: 2-21-16	SHEET 4 OF 7	



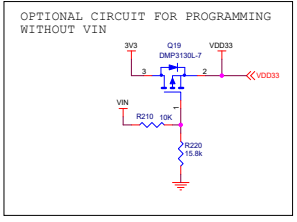
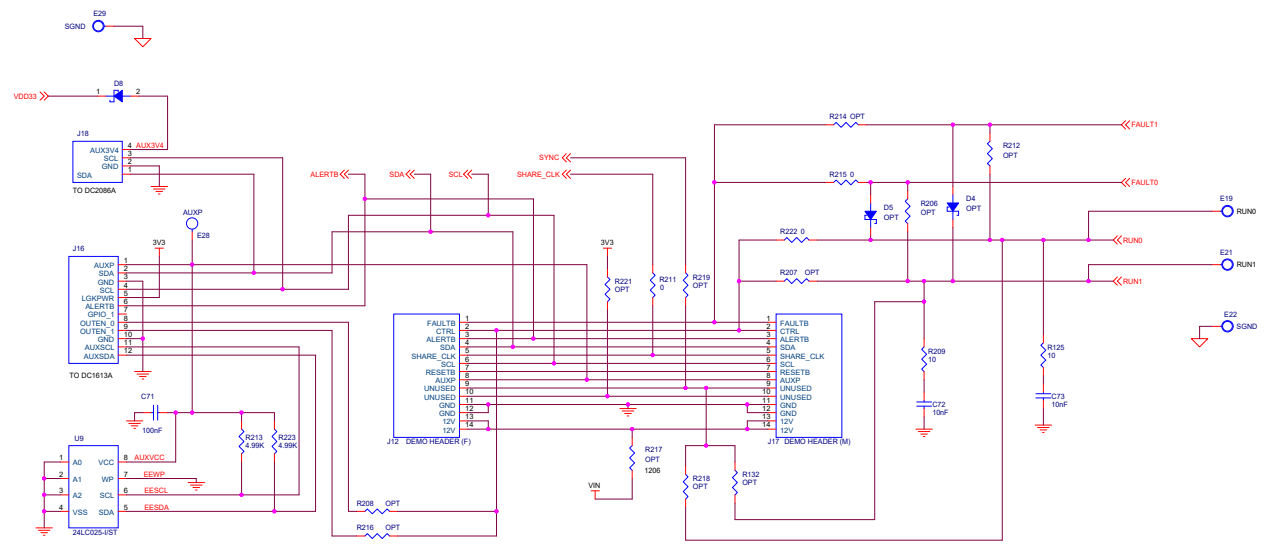
CUSTOMER NOTICE ANALOG DEVICES HAS MADE A BEST EFFORT TO DESIGN A CIRCUIT THAT MEETS CUSTOMER-SUPPLIED SPECIFICATIONS. HOWEVER, IT REMAINS THE CUSTOMER'S RESPONSIBILITY TO VERIFY PROPER AND RELIABLE OPERATION IN THE ACTUAL APPLICATION. COMPONENT SUBSTITUTION AND PRINTED CIRCUIT BOARD LAYOUT MAY SIGNIFICANTLY AFFECT CIRCUIT PERFORMANCE OR RELIABILITY. CONTACT ANALOG DEVICES APPLICATIONS ENGINEERING FOR ASSISTANCE.	APPROVALS PCB DES: HZ APP ENG: HZhou		
	www.analog.com www.linear.com Phone: (408)432-1900	TITLE: SCHEMATIC HIGH EFFICIENCY, POLY-PHASE, DC/DC STEP-DOWN iModule REGULATOR WITH DIGITAL POWER MANAGEMENT	
THIS CIRCUIT IS PROPRIETARY TO ANALOG DEVICES AND SUPPLIED FOR USE WITH ANALOG DEVICES PARTS.	IC NO: LT12647CEY SKU NO: DC2638A SIZE: N/A DATE: 2-21-18	SCHEMATIC NO. AND REVISION: DC26381A-A/B/C/D_REV02	SHEET 5 OF 7

ALL PARTS ON THIS PAGE ARE FOR DEMO ONLY, NOT NEEDED IN CUSTOMER DESIGN

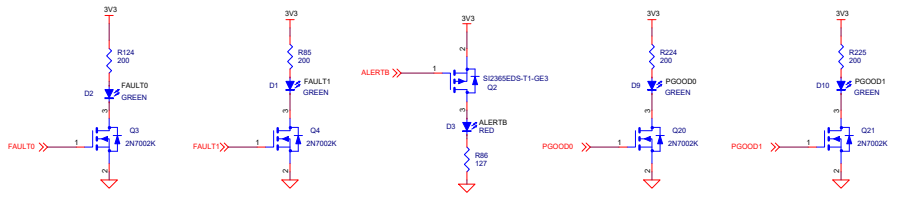


<p>CUSTOMER NOTICE</p> <p>ANALOG DEVICES HAS MADE A BEST EFFORT TO DESIGN A CIRCUIT THAT MEETS CUSTOMER-SUPPLIED SPECIFICATIONS; HOWEVER, IT REMAINS THE CUSTOMER'S RESPONSIBILITY TO VERIFY PROPER AND RELIABLE OPERATION IN THE ACTUAL APPLICATION. COMPONENT SUBSTITUTION AND PRINTED CIRCUIT BOARD LAYOUT MAY SIGNIFICANTLY AFFECT CIRCUIT PERFORMANCE OR RELIABILITY. CONTACT ANALOG DEVICES APPLICATIONS ENGINEERING FOR ASSISTANCE.</p> <p>THIS CIRCUIT IS PROPRIETARY TO ANALOG DEVICES AND SUPPLIED FOR USE WITH ANALOG DEVICES PARTS.</p>	<p>APPROVALS</p>		<p>ANALOG DEVICES</p> <p>POWER BY LINEAR</p> <p>www.analog.com www.linear.com Phone: (408)432-1900</p>
	PCB DES.	HZ	
	APP ENG.	H.Zhou	
	<p>TITLE: SCHEMATIC HIGH EFFICIENCY, POLY-PHASE, DC/DC STEP-DOWN</p>		
	IC NO. LTM4678EY	SCHEMATIC NO. AND REVISION:	
	SKU NO. DC2638A	DC26381A-A/B/C/D_REV02	
	SIZE: N/A	DATE: 2-21-18	SHEET 6 OF 7

ALL PARTS ON THIS PAGE ARE FOR DEMO ONLY, NOT NEEDED IN CUSTOMER DESIGN



PSM STACKING CONNECTORS:
 J1, MALE, CONN HEADER 14POS 2MM R/A GOLD, Molex Connector Corp. 87760-1416
 J2, FEMALE, CONN RECEPT 2MM DUAL R/A 14POS, Sullins Conn. NPPN072FJFN-RC



CUSTOMER NOTICE		APPROVALS		ANALOG DEVICES		POWER BY LINEAR	
<small>ANALOG DEVICES HAS MADE A BEST EFFORT TO DESIGN A CIRCUIT THAT MEETS CUSTOMER-SUPPLIED SPECIFICATIONS. HOWEVER, IT REMAINS THE CUSTOMER'S RESPONSIBILITY TO VERIFY PROPER AND RELIABLE OPERATION IN THE ACTUAL APPLICATION. COMPONENT SUBSTITUTION AND POINT-TO-POINT CIRCUIT BOARD LAYOUT MAY SIGNIFICANTLY AFFECT CIRCUIT PERFORMANCE OR RELIABILITY. CONTACT ANALOG DEVICES APPLICATIONS ENGINEERING FOR ASSISTANCE.</small>							
PCB DES.	KZ	APP ENG.	H.Zhou	www.analog.com www.linear.com Phone: (488)432-1800			
TITLE: SCHEMATIC HIGH EFFICIENCY, POLY-PHASE, DC/DC STEP-DOWN							
IC NO. LTM47REY SKU NO. DC2638A				SCHEMATIC NO. AND REVISION: DC26381A-A/B/C/D_REV02			
<small>THIS CIRCUIT IS PROPRIETARY TO ANALOG DEVICES AND SUPPLIED FOR USE WITH ANALOG DEVICES PARTS.</small>						SIZE: N/A	DATE: 2-21-18
						SHEET 7	OF 7

DEMO MANUAL DC2638A-D

PARTS LIST

ITEM	QTY	REFERENCE	PART DESCRIPTION	MANUFACTURER/PART NUMBER
Required Circuit Components				
1	1	C1N1	CAP., 150µF, ALUM. ELECT., 35V, 20%, 8mm x 10.2mm SMD, RADIAL, AEC-Q200	PAMASONIC, EEHZA1V151P
2	36	COUT1, COUT2, COUT3, COUT6, COUT7, COUT8, COUT46, COUT47, COUT49, COUT52, COUT53, COUT55, COUT58, COUT59, COUT62, COUT65, COUT66, COUT67, COUT70, COUT71, COUT74, COUT77, COUT78, COUT79, COUT82, COUT83, COUT86, COUT89, COUT90, COUT91COUT94, COUT95, COUT96, COUT97, COUT98, COUT99	CAP., 100µF, X5R, 6.3V, 20%, 1210	AVX, 12106D107MAT2A MURATA, GRM32ER60J107M2E20L TDK, C3225X5R0J107M250AC
3	20	C1N2, C1N3, C1N4, C1N5, C1N6, C1N7, C1N8, C1N9, C1N10, C1N11, C1N12, C1N13, C1N14, C1N15, C1N16, C1N17, C1N18, C1N19, C1N20, C1N21	CAP., 22µF, X5R, 25V, 10%, 1210	AVX, 12103D226KAT2A MURATA, GRM32ER61E226KE15L TAIYO YUDEN, TMK325BJ226KM-P TAIYO YUDEN, TMK325BJ226KM-T PAMASONIC, 4TPE470ML
4	20	COUT4, COUT9, COUT10, COUTT1, COUT48, COUT50, COUT54, COUT56, COUT60, COUT61, COUT63, COUT64, COUT72, COUT73, COUT75, COUT80, COUT84, COUT87, COUT88, COUT93	CAP., 470µF, TANT POSCAP 4V, 20%, 7343, 10mΩ, TPE, NO SUBS. ALLOWED	AVX, 0603YC273KAT2A KEMET, C0603C273K4RACTU SAMSUNG, CL10B273K08NUNC SAMSUNG, CL10B273K08NWWC
6	1	C14	CAP., 0.027µF, X7R, 16V, 10%, 0603	AVX, 0603YC221KAT2A KEMET, C0603C221K4RACTU NIC, MMC0603X7R221K16TRPF
7	1	C15	CAP., 220pF, X7R, 16V, 10%, 0603	AVX, 0603YC221KAT2A KEMET, C0603C221K4RACTU NIC, MMC0603X7R221K16TRPF
9	6	C30, C41, C49, C64, C75, C85	CAP., 4.7µF, X5R, 25V, 10%, 0603, NO SUBS. ALLOWED	MURATA, GRM188R61E475KE11D
10	2	C65, C68	CAP., 1µF, X7R, 25V, 10%, 1206	AVX, 12063C105KAT2A MURATA, GRM31MR71E105KA01L TAIYO YUDEN, TMK316B7105KL-T TDK, C3216X7R1E105K160AA
11	1	C66	CAP., 0.22µF, X5R, 25V, 10%, 0805	AVX, 08053D224KAT2A TAIYO YUDEN, TMK212BJ224KGHT VENKEL LTD., C0805X5R250-224KNE
12	1	C67	CAP., 0.1µF, X7R, 25V, 10%, 1206	AVX, 12063C104KAT2A NIC, MMC1206X7R104K25TRPF
13	1	C69	CAP., 1800pF, X7R, 16V, 10%, 0603	AVX, 0603YC182KAT2A KEMET, C0603C182K4RACTU NIC, MMC0603X7R182K16TRPF
14	1	C70	CAP., 1µF, X5R, 25V, 10%, 0805	AVX, 08053D105KAT2A MURATA, GRM216R61E105KA12D TDK, CGB4B3X5R1E105K055AB
15	1	C71	CAP., 0.1µF, X7R, 25V, 10%, 0603	AVX, 06033C104KAT2A KEMET, C0603C104K3RACTU NIC, MMC0603X7R104K25TRPF TDK, C1608X7R1E104K080AA
16	2	C72, C73	CAP., 0.01µF, X7R, 25V, 10%, 0603	AVX, 06033C103KAT2A MURATA, GRM188R71E103KA01D YAGEO, CC0603KRX7R8BB103
17	5	C80, C81, C82, C83, C84	CAP., 2.2µF, X7R, 25V, 10%, 0603	MURATA, GRM188Z71E225KE43D

DEMO MANUAL DC2638A-D

PARTS LIST

ITEM	QTY	REFERENCE	PART DESCRIPTION	MANUFACTURER/PART NUMBER
Required Circuit Components				
18	4	D1, D2, D9, D10	LED, GREEN, WATERCLEAR, 0603	WURTH ELEKTRONIK, 150060SS75000
19	1	D3	LED, SUPER RED, WATERCLEAR, 0603	WURTH ELEKTRONIK, 150060SS75000
21	1	D8	DIODE, SCHOTTKY RECT., 20V, 0.5A, SOD-882D, LEADLESS, 2-TERM.	NEXPERIA, PMEG2005AELD, 315
35	1	Q2	XSTR, MOSFET, P-CH, 20V, 5.9A, TO-236 (SOT23-3)	VISHAY, SI2365EDS-T1-GE3
36	4	Q3, Q4, Q20, Q21	XSTR, MOSFET, SINGLE N-CH, 60V, 380mA, SOT23-3, AEC-Q101	ON SEMICONDUCTOR, 2N7002KTTG
37	2	Q11, Q12	XSTR, MOSFET, N-CH, 40V, TO-252 (DPAK)	VISHAY, SUD50N04-8M8P-4GE3
38	1	Q19	XSTR, MOSFET, P-CH, 30V, 3.5A, SOT23-3, AEC-Q101	DIODES INC., DMP3130L-7
40	36	R9, R33, R91, R92, R106, R107, R127, R128, R129, R146, R147, R148, R149, R150, R151, R152, R164, R177, R178, R179, R185, R186, R187, R195, R196, R197, R202, R211, R215, R222, R229, R230, R238, R239, R240, R245	RES., 0 Ω , 1/10W, 0603, AEC-Q200	MIC, NRC06Z0TRF VISHAY, CRCW06030000Z0EA
41	20	R10, R11, R12, R13, R14, R15, R16, R18, R24, R95, R116, R136, R137, R138, R145, R162, R191, R210, R226, R234	RES., 10k, 1%, 1/10W, 0603, AEC-Q200	KOA SPEER, RK73HJTTD1002F PAMASONIC, ERJ3EKF1002V VISHAY, CRCW060310K0FKEA
42	4	R25, R32, R125, R209	RES., 10 Ω , 1%, 1/10W, 0603	MIC, NRC06F10R0TRF PAMASONIC, ERJ3EKF10R0V ROHM, MCR03EZPFX10R0 VISHAY, CRCW060310R0FKEA YAGEO, RC0603FR-0710RL
43	1	R26	RES., 787 Ω , 1%, 1/10W, 0603, AEC-Q200	MIC, NRC06F7870TRF PAMASONIC, ERJ3EKF7870V VISHAY, CRCW0603787RFKEA
44	4	R85, R124, R224, R225	RES., 200 Ω , 1%, 1/10W, 0603	MIC, NRC06F2000TRF VISHAY, CRCW0603200RFKEA YAGEO, RC0603FR-07200RL
45	1	R86	RES., 127 Ω , 1%, 1/10W, 0603, AEC-Q200	MIC, NRC06F1270TRF PAMASONIC, ERJ3EKF1270V VISHAY, CRCW0603127RFKEA
46	5	R90, R126, R173, R193, R236	RES., 0.005 Ω , 1%, 1/2W, 2010, SENSE, AEC-Q200	VISHAY, WSL20105L000FEA
48	2	R108, R118	RES., 0.01 Ω , 1%, 1/2W, 2010, SENSE, AEC-Q200	VISHAY, WSL2010RP0100FEA
49	1	R109	RES., 100k, 1%, 1/10W, 0603, AEC-Q200	MIC, NRC06F1003TRF PAMASONIC, ERJ3EKF1003V VISHAY, CRCW0603100KFKEA
50	1	R110	RES., 5k, 10%, 1/2W, THT 3/8 SQ, 1-TURN, TOP ADJ, TRIMPOT	
51	2	R111, R115	RES., 20k, 1%, 1/10W, 0603	PAMASONIC, ERJ3EKF2002V VISHAY, CRCW060320K0FKEA YAGEO, RC0603FR-0720KL
52	1	R112	RES., 100 Ω , 1%, 1/10W, 0603, AEC-Q200	MIC, NRC06F1000TRF PAMASONIC, ERJ3EKF1000V VISHAY, CRCW0603100RFKEA
53	1	R113	RES., 1.4k, 1%, 1/10W, 0603, AEC-Q200	MIC, NRC06F1401TRF PAMASONIC, ERJ3EKF1401V VISHAY, CRCW06031K40FKEA

DEMO MANUAL DC2638A-D

PARTS LIST

ITEM	QTY	REFERENCE	PART DESCRIPTION	MANUFACTURER/PART NUMBER
Required Circuit Components				
54	1	R114	RES., 154k, 1%, 1/10W, 0603, AEC-Q200	NIC, NRC06F1543TRF PAMASONIC, ERJ3EK1543V VISHAY, CRCW0603154KFKEA
55	1	R117	RES., 2Ω, 1%, 1/10W, 0603, AEC-Q200	VISHAY, CRCW06032R00FKEA
56	1	R123	RES., 1MΩ, 1%, 1/10W, 0603, AEC-Q200	NIC, NRC06F1004TRF PAMASONIC, ERJ3EK1004V VISHAY, CRCW06031M00FKEA
57	1	R139	RES., 1.65k, 1%, 1/10W, 0603, AEC-Q200	NIC, NRC06F1651TRF PAMASONIC, ERJ3EK1651V VISHAY, CRCW06031K65FKEA
58	4	R153, R154, R155, R156	RES., 0Ω, 3/4W, 2010, AEC-Q200	NIC, NRC50Z0TRF PAMASONIC, ERJ1Z2Y0R00U VISHAY, CRCW20100000Z0EF
59	1	R181	RES., 2.43k, 1%, 1/10W, 0603, AEC-Q200	NIC, NRC06F2431TRF PAMASONIC, ERJ3EK2431V VISHAY, CRCW06032K43FKEA
60	1	R198	RES., 3.24k, 1%, 1/10W, 0603, AEC-Q200	NIC, NRC06F3241TRF PAMASONIC, ERJ3EK3241V VISHAY, CRCW06033K24FKEA
61	1	R203	RES., 681k, 1%, 1/10W, 0603, AEC-Q200	NIC, NRC06F6813TRF PAMASONIC, ERJ3EK6813V VISHAY, CRCW0603681K3FKEA
62	1	R204	RES., 3.3Ω, 1%, 1/10W, 0603, AEC-Q200	VISHAY, CRCW06033R30FKEA
63	1	R205	RES., 82.5Ω, 1%, 1/10W, 0603, AEC-Q200	NIC, NRC06F82R5TRF PAMASONIC, ERJ3EK82R5V VISHAY, CRCW060382R5FKEA
64	2	R213, R223	RES., 4.99k, 1%, 1/10W, 0603, AEC-Q200	NIC, NRC06F4991TRF PAMASONIC, ERJ3EK4991V VISHAY, CRCW06034K99FKEA
66	1	R220	RES., 15.8k, 1%, 1/10W, 0603, AEC-Q200	NIC, NRC06F1582TRF PAMASONIC, ERJ3EK1582V VISHAY, CRCW060315K8FKEA
67	1	R227	RES., 4.7k, 1%, 1/10W, 0603, AEC-Q200	NIC, NRC06F4701TRF PAMASONIC, ERJ3EK4701V VISHAY, CRCW06034K70FKEA
68	1	R241	RES., 4.22k, 1%, 1/10W, 0603, AEC-Q200	NIC, NRC06F4221TRF PAMASONIC, ERJ3EK4221V VISHAY, CRCW06034K22FKEA
70	5	U1, U2, U3, U4, U5	IC, DUAL 25A POP PSM MODULE, BGA-144	ANALOG DEVICES, LTM4678EY#PBF
71	1	U6	IC, 700mA μ Power LDO WITH SHUTDOWN, SO-8	ANALOG DEVICES, LT1129CS8#PBF ANALOG DEVICES, LT1129CS8#TRPBF
72	1	U7	IC, TIMER/BLOCK VOLTAGE-CTRL. PWM, TSOT23-6	ANALOG DEVICES, LTC6992CS6-1#PBF ANALOG DEVICES, LTC6992CS6-1#TRMPBF ANALOG DEVICES, LTC6992CS6-1#TRPBF
73	1	U8	IC, SINGLE R TO R IN/OUT OP AMP, TSOT23-5, 100V/ μ s, 85MHz	ANALOG DEVICES, LT1803IS5#PBF ANALOG DEVICES, LT1803IS5#TRPBF
74	1	U9	IC, MEMORY, EEPROM, 2Kb (256x8), TSSOP-8, 400kHz	MICROCHIP 24LC025-I/ST MICROCHIP, 24LC025-I/ST

DEMO MANUAL DC2638A-D

PARTS LIST

ITEM	QTY	REFERENCE	PART DESCRIPTION	MANUFACTURER/PART NUMBER
Additional Demo Board Circuit Components				
1	0	COU15, COU12, COU151, COU157, COU168, COU169, COU176, COU181, COU185, COU192	CAP, OPTION, D3L	
2	0	C16, C17, C29, C31, C32, C33, C34, C35, C36, C37, C38, C39, C40, C43, C45, C46, C47, C48, C50, C51, C52, C53, C74, C76, C77, C78, C79	CAP, OPTION, 0603	
3	0	D4, D5	DIODE, OPTION, SOD-323	
4	0	R8, R27, R28, R29, R30, R31, R104, R105, R130, R131, R132, R133, R134, R135, R140, R141, R142, R143, R144, R158, R159, R160, R166, R174, R182, R183, R184, R188, R189, R190, R192, R194, R199, R200, R201, R206, R207, R208, R212, R214, R216, R218, R219, R221, R228, R231, R232, R233, R235, R237, R242, R243, R244	RES., OPTION, 0603	
5	0	R102, R103	RES., OPTION, 2512	
6	0	R217	RES., OPTION, 1206	
7	0		PCB ASSY DWG, DC2638A	
Hardware: For Demo Board Only				
1	27	E1, E2, E3, E4, E5, E6, E7, E8, E9, E10, E11, E12, E13, E14, E15, E16, E17, E20, E21, E22, E23, E24, E25, E26, E27, E28, E29	TEST POINT, TURRET, 0.064, MTG. HOLE	MILL-MAX, 2308-2-00-80-00-00-07-0
2	2	JP1, JP2	CONN., HDR, MALE, 1x3, 2mm, VERT STR, THT	WURTH ELEKTRONIK, 62000311121
3	16	J5, J7, J8, J9, J10, J13, J19, J20	NUT, HEX, STEEL, ZINC PLATE, 10-32	KEYSTONE, 4705
4	8	J5, J7, J8, J9, J10, J13, J19, J20	WASHER, FLAT, STEEL, ZINC PLATE, 10-32	KEYSTONE, 4703
5	8	J5, J7, J8, J9, J10, J13, J19, J20	RING, LUG, CRIMP #10, NON-INSULATED, SOLDERLESS TERMINALS	KEYSTONE, 8205
6	8	J5, J7, J8, J9, J10, J13, J19, J20	STUD, FASTENER, #10-32	PENNENGINEERING, KF1-032-10ET
7	1	J12	CONN., HDR, FEMALE, 2x7, 2mm, R/A THT	SULLINS CONNECTOR SOLUTIONS, NPPN072FJFN-RC
8	2	J14, J15	CONN., RF BNC, RCPT JACK, 5-PIN, STR, THT, 50 OHMS	AMPHENOL RF 112404
9	1	J16	CONN., SHROUDED HDR, MALE, 2x6, 2mm, VERT, STR, THT	FCI, 9841-4-606-12ULF
10	1	J17	CONN., HDR, MALE, 2x7, 2mm, R/A THT	MOLEX, 0877601416 MOLEX, 87760-1416
11	1	J18	CONN., SHROUDED HDR, MALE, 1x4, 2mm, VERT, STR, THT	HIROSE ELECTRIC, DF3A-4P-2DSA
12	1	LB1	LABEL SPEC, DEMO BOARD SERIAL NUMBER	BRADY, TH1-96-717-10
13	4	MH1, MH2, MH3, MH4	STANDOFF, NYLON, SNAP-ON, 0.50	WURTH ELEKTRONIK, 702935000
14	2	SW0, SW1	CONN., HDR, MALE, 1x3, 2mm, VERT STR, THT, 10u Au	SAMTEC, TMM-103-02-L-S
15	2	XJP1, XJP2	CONN., SHUNT FEMALE, 2 POS, 2mm	WURTH ELEKTRONIK, 60800213421
17	1		TOOL, STENCIL, 700-DC2638A	ANALOG DEVICES, 830-DC2638A
78	1		PCB, DC2638A	MAO BANG, 600-DC2638A

Information furnished by Analog Devices is believed to be accurate and reliable. However, no responsibility is assumed by Analog Devices for its use, nor for any infringements of patents or other rights of third parties that may result from its use. Specifications subject to change without notice. No license is granted by implication or otherwise under any patent or patent rights of Analog Devices.



ESD Caution
ESD (electrostatic discharge) sensitive device. Charged devices and circuit boards can discharge without detection. Although this product features patented or proprietary protection circuitry, damage may occur on devices subjected to high energy ESD. Therefore, proper ESD precautions should be taken to avoid performance degradation or loss of functionality.

Legal Terms and Conditions

By using the evaluation board discussed herein (together with any tools, components, documentation or support materials, the "Evaluation Board"), you are agreeing to be bound by the terms and conditions set forth below ("Agreement") unless you have purchased the Evaluation Board, in which case the Analog Devices Standard Terms and Conditions of Sale shall govern. Do not use the Evaluation Board until you have read and agreed to the Agreement. Your use of the Evaluation Board shall signify your acceptance of the Agreement. This Agreement is made by and between you ("Customer") and Analog Devices, Inc. ("ADI"), with its principal place of business at One Technology Way, Norwood, MA 02062, USA. Subject to the terms and conditions of the Agreement, ADI hereby grants to Customer a free, limited, personal, temporary, non-exclusive, non-sub licensable, non-transferable license to use the Evaluation Board FOR EVALUATION PURPOSES ONLY. Customer understands and agrees that the Evaluation Board is provided for the sole and exclusive purpose referenced above, and agrees not to use the Evaluation Board for any other purpose. Furthermore, the license granted is expressly made subject to the following additional limitations: Customer shall not (i) rent, lease, display, sell, transfer, assign, sublicense, or distribute the Evaluation Board; and (ii) permit any Third Party to access the Evaluation Board. As used herein, the term "Third Party" includes any entity other than ADI. Customer, their employees, affiliates and in-house consultants, The Evaluation Board is NOT sold to Customer; all rights not expressly granted herein, including ownership of the Evaluation Board, are reserved by ADI. CONFIDENTIALITY. This Agreement and the Evaluation Board shall all be considered the confidential and proprietary information of ADI. Customer may not disclose or transfer any portion of the Evaluation Board to any other party for any reason. Upon discontinuation of use of the Evaluation Board or termination of this Agreement, Customer agrees to promptly return the Evaluation Board to ADI. ADDITIONAL RESTRICTIONS. Customer may not disassemble, decompile or reverse engineer chips on the Evaluation Board. Customer shall inform ADI of any occurred damages or any modifications or alterations it makes to the Evaluation Board, including but not limited to soldering or any other activity that affects the material content of the Evaluation Board. Modifications to the Evaluation Board must comply with applicable law, including but not limited to the RoHS Directive. TERMINATION. ADI may terminate this Agreement at any time upon giving written notice to Customer. Customer agrees to return to ADI the Evaluation Board at that time. LIMITATION OF LIABILITY. THE EVALUATION BOARD PROVIDED HEREUNDER IS PROVIDED "AS IS" AND ADI MAKES NO WARRANTIES OR REPRESENTATIONS OF ANY KIND WITH RESPECT TO IT. ADI SPECIFICALLY DISCLAIMS ANY REPRESENTATIONS, ENDORSEMENTS, GUARANTEES, OR WARRANTIES, EXPRESS OR IMPLIED, RELATED TO THE EVALUATION BOARD INCLUDING, BUT NOT LIMITED TO, THE IMPLIED WARRANTY OF MERCHANTABILITY, TITLE, FITNESS FOR A PARTICULAR PURPOSE OR NONINFRINGEMENT OF INTELLECTUAL PROPERTY RIGHTS. IN NO EVENT WILL ADI AND ITS LICENSORS BE LIABLE FOR ANY INCIDENTAL, SPECIAL, INDIRECT OR CONSEQUENTIAL DAMAGES RESULTING FROM CUSTOMER'S POSSESSION OR USE OF THE EVALUATION BOARD, INCLUDING BUT NOT LIMITED TO LOST PROFITS, DELAY COSTS, LABOR COSTS OR LOSS OF GOODWILL. ADI'S TOTAL LIABILITY FROM ANY AND ALL CAUSES SHALL BE LIMITED TO THE AMOUNT OF ONE HUNDRED US DOLLARS (\$100.00). EXPORT Customer agrees that it will not directly or indirectly export the Evaluation Board to another country, and that it will comply with all applicable United States federal laws and regulations relating to exports. GOVERNING LAW. This Agreement shall be governed by and construed in accordance with the substantive laws of the Commonwealth of Massachusetts (excluding conflict of law rules). Any legal action regarding this Agreement will be heard in the state or federal courts having jurisdiction in Suffolk County, Massachusetts, and Customer hereby submits to the personal jurisdiction and venue of such courts. The United Nations Convention on Contracts for the International Sale of Goods shall not apply to this Agreement and is expressly disclaimed.

Rev. 0