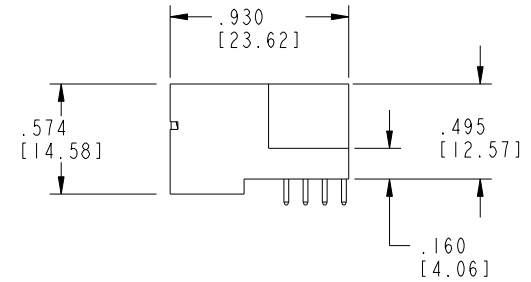
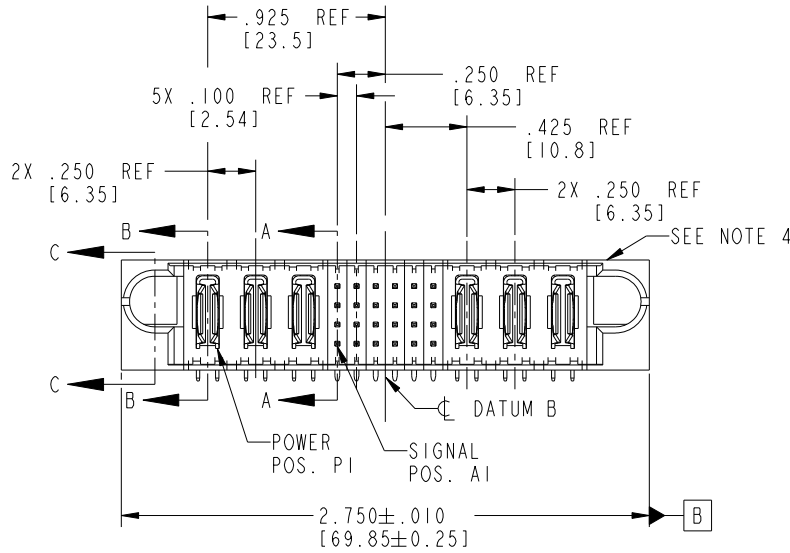
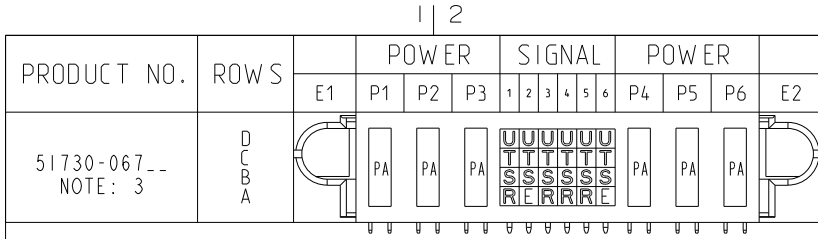


Tous droits strictement réservés. Reproduction ou communication a des tiers interdite sous quelque forme que ce soit sans autorisation écrite du propriétaire. Propriété de c FCI. Droits de reproduction FCI.

All rights strictly reserved. Reproduction or issue to third parties in any form whatever is not permitted without written authority from the proprietor. Property of FCI. Copyright FCI.



CODE	DIM "M" MATING LENGTH	CONTACT TYPE
E	.220 [5.59]	SIGNAL
R	.270 [6.86]	SIGNAL
S	.270 [6.86]	SIGNAL
T	.270 [6.86]	SIGNAL
U	.270 [6.86]	SIGNAL
PA	N/A [N/A]	POWER

mat'l code				SEE NOTE 2		tolerances unless otherwise specified		CUSTOMER		 www.fciconnect.com	
ltr	ecn no.	dr	date	linear	.XX±.01/0.XX±0.3	projection		COPY		title	
A	V21898	CGD	12/18/02		.XXX±.005/0.XX±0.13			3P		3P + 24S + 3P	
B	DG05-0501	GuoJM	11/24/05	angles	.XXX±.0020/0.XXX±0.051			R/A		SOLDER HEADER	
C	DG08-0272	WD	09/27/08		0°+2°	INCH/MM		product family		code	
				dr	C. DAILY	12/18/02		PwrBlade		213	
				enrg	M. MOSTOLLER	12/18/02		size		sheet	
				chr	M. MOSTOLLER	12/18/02		dwg no		1 of 4	
				appd	M. MOSTOLLER	12/18/02		A		51730-067	
sheet index	revision sheet	C	C	C	C	scale		1:1			
		1	2	3	4						

Pro/E

PDM: Rev:C

STATUS: Released

Printed: Dec 20, 2010

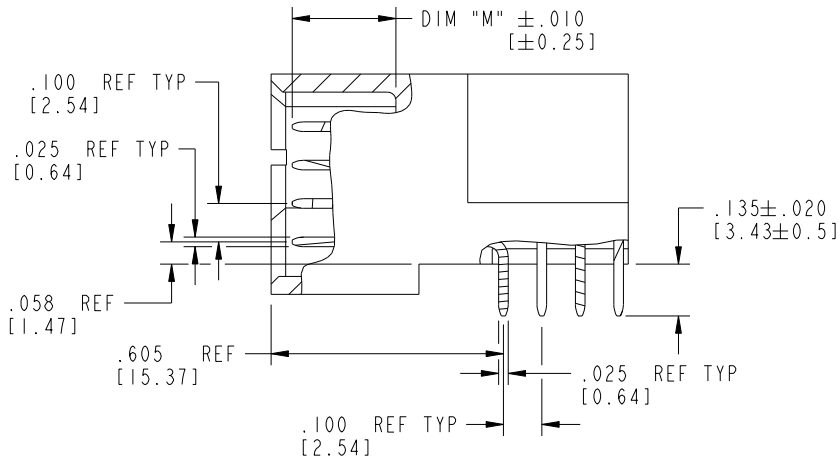
cage code 28556

Tous droits strictement réservés. Reproduction ou communication a des tiers interdite sous quelque forme que ce soit sans autorisation écrite du propriétaire. Propriété de c FCI. Droits de reproduction FCI.

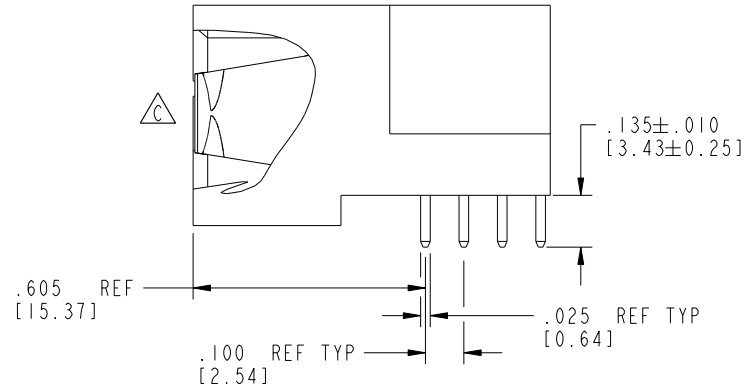
All rights strictly reserved. Reproduction or issue to third parties in any form whatever is not permitted without written authority from the proprietor. Property of FCI. Copyright FCI.



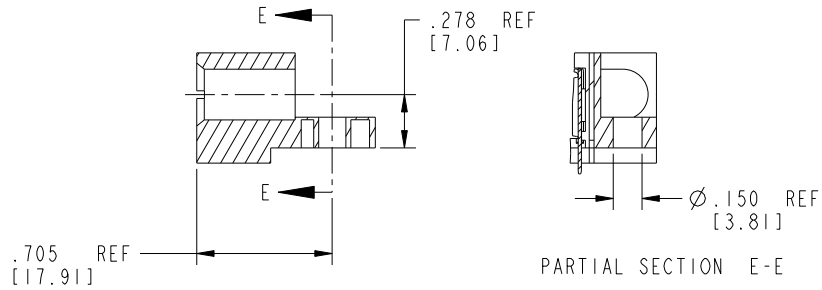
PRODUCT NUMBER
51730-067__
NOTE: 3



BROKEN-OUT SECTION A-A
SCALE 2:1



BROKEN-OUT SECTION B-B
SCALE 2:1



SECTION C-C

PARTIAL SECTION E-E

mat'l code		SEE NOTE 2		tolerances unless otherwise specified		CUSTOMER		 www.fciconnect.com	
lfr	ecn no.	dr	date	linear	.XX±.01/0.X±0.3	COPY		title	
C				projection	.XX±.005/0.XX±0.13			3P + 24S + 3P R/A SOLDER HEADER	
				angles	.XXX±.0020/0.XXX±0.051			product family	
				dr	0°±2°	scale		PwrBlade	
				engr	C. DAILY 12/18/02	1:1		code	
				chr	M. MOSTOLLER 12/18/02			213	
				appd	M. MOSTOLLER 12/18/02			sheet	
sheet index		revision sheet						2 of 4	
								A 51730-067	

cage code 28536

Pro/E

PDM: Rev: C

STATUS: Released

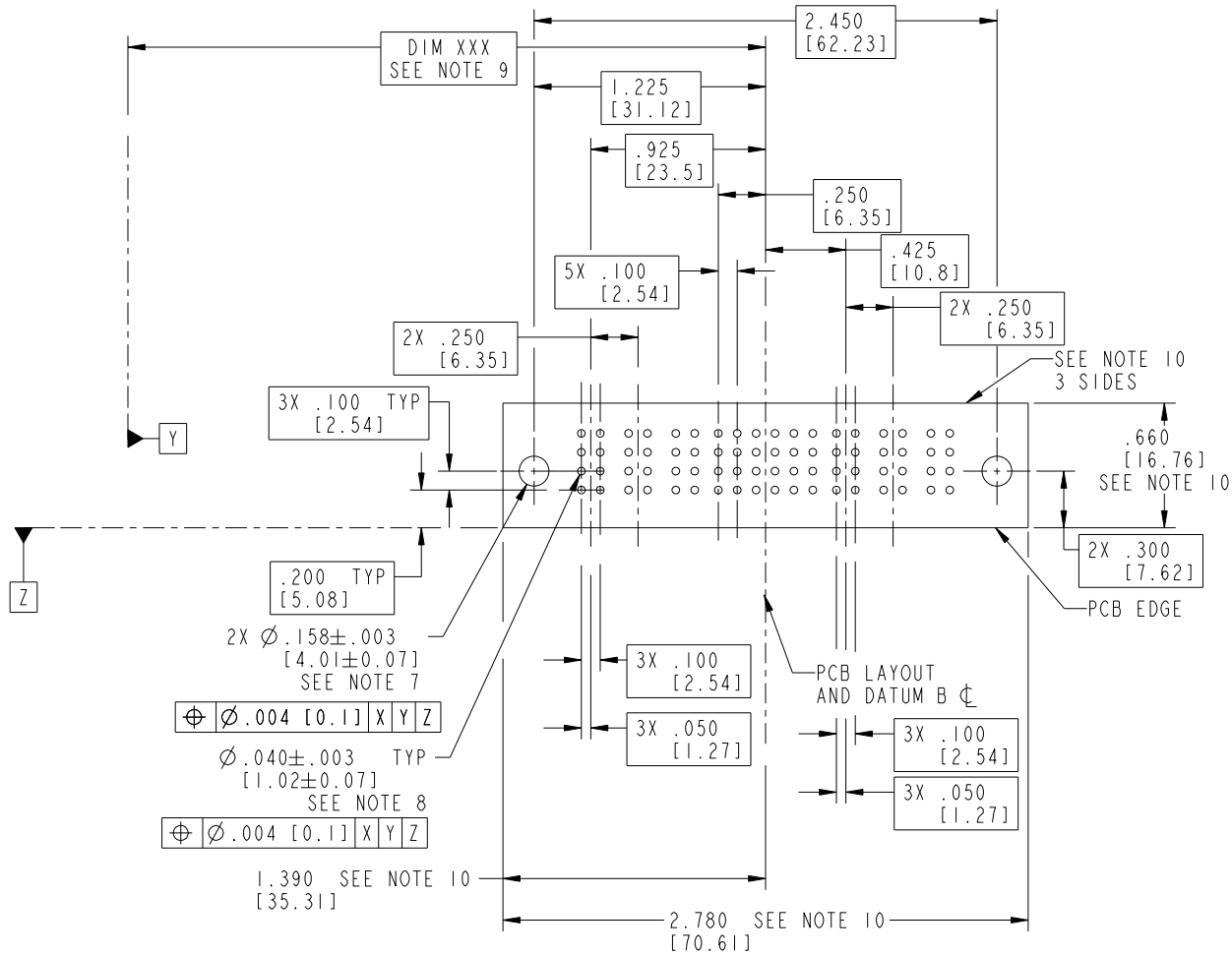
Printed: Dec 20, 2010

Tous droits strictement réservés. Reproduction ou communication a des tiers interdite sous quelque forme que ce soit sans autorisation écrite du propriétaire. Propriété de c FCI. Droits de reproduction FCI.



All rights strictly reserved. Reproduction or issue to third parties in any form whatever is not permitted without written authority from the proprietor. Property of FCI. Copyright FCI.

PRODUCT NUMBER
51730-067__
NOTE: 3



RECOMMENDED PCB LAYOUT

mat'l code		SEE NOTE 2		tolerances unless otherwise specified		CUSTOMER		 www.fciconnect.com	
lfr	ecn no.	dr	date	linear	.XX±.01/0.X±0.3	COPY		title	
C				projection	.XX±.005/0.XX±0.13			3P + 24S + 3P R/A SOLDER HEADER	
				angles	.XXX±.0020/0.XXX±0.051			product family	
				dr	0°±2°	INCH/MM		PwrBlade	
				engr	C. DAILY 12/18/02	scale		code	
				chr	M. MOSTOLLER 12/18/02	1:1		213	
				appd	M. MOSTOLLER 12/18/02			sheet	
sheet index		revision sheet						3 of 4	
								A 51730-067	

cage code 28536

Pro/E

PDM: Rev: C

STATUS: Released

Printed: Dec 20, 2010

Tous droits strictement réservés. Reproduction ou communication a des tiers interdite sous quelque forme que ce soit sans autorisation écrite du propriétaire. Propriété de c FCI. Droits de reproduction FCI.



All rights strictly reserved. Reproduction or issue to third parties in any form whatever is not permitted without written authority from the proprietor. Property of FCI. Copyright FCI.

1 | 2

3 |

4

PRODUCT NUMBER
51730-067__
NOTE: 3

NOTES:

1. DIMENSIONS AND TOLERANCES ARE IN ACCORDANCE WITH ASME Y14.5M, 1994 UNLESS OTHERWISE SPECIFIED.

CONNECTOR NOTES:

- 2. HOUSING MATERIAL: UL 94 V-0 GLASS FILLED HIGH-TEMP THERMOPLASTIC
POWER CONTACT MATERIAL: COPPER ALLOY
SIGNAL PIN MATERIAL: COPPER ALLOY

3. SEE ITEM 1 & 2 IN PRINT 10064183 FOR PLATING SPEC OF 51730-067 AND 51730-067LF RESPECTIVELY.

4. MANUFACTURER'S NAME, P/N, AND DATE CODE TO APPEAR ON THIS SURFACE.

5. PRODUCT SPECIFICATION GS-12-149.
APPLICATION SPECIFICATION BUS-20-067.

PCB NOTES:

6. ALL HOLE DIAMETERS ARE FINISHED HOLE SIZE.

7. MOUNTING HOLES, WHERE APPLICABLE, ARE UNPLATED.

8. $\varnothing .0453 \pm .0010$ [1.151 \pm 0.025] DRILLED HOLES PLATED WITH
.0003 [0.008] MIN SnPb OVER .001 [0.03]
TO .003 [0.08] Cu PLATING TO ACHIEVE
 $\varnothing .040 \pm .003$ [1.02 \pm .07] HOLE.

9. "DIM XXX" TO BE DETERMINED BY THE CUSTOMER.

10. CONNECTOR KEEP-OUT ZONE.

12. A \triangle SYMBOL WILL BE NEXT TO ANY DIMENSION, VIEW, OR NOTE WHICH HAS BEEN MODIFIED WITH THE CURRENT DRAWING REVISION.

mat'l code		SEE NOTE 2		tolerances unless otherwise specified		CUSTOMER		FCI		www.fciconnect.com	
ltr	ecn no.	dr	date	linear	.XX \pm .01 / 0.X \pm 0.3	COPY		projection		title	
C					.XX \pm .005 / 0.XX \pm 0.13	INCH/MM				3P + 24S + 3P R/A SOLDER HEADER	
				angles	.XXX \pm .0020 / 0.XXX \pm 0.051	scale		product family		code	
				dr	0° + 2°	1:1		PwrBlade		213	
				engr	C. DAILY 12/18/02			size		sheet	
				chr	M. MOSTOLLER 12/18/02			A		4 of 4	
				appd	M. MOSTOLLER 12/18/02			51730-067			
sheet index	revision sheet										

A

A

B

B

1 | 2

Pro/E

PDM: Rev: C

STAT: Released

Printed: Dec 20, 2010

cage code 2856

4