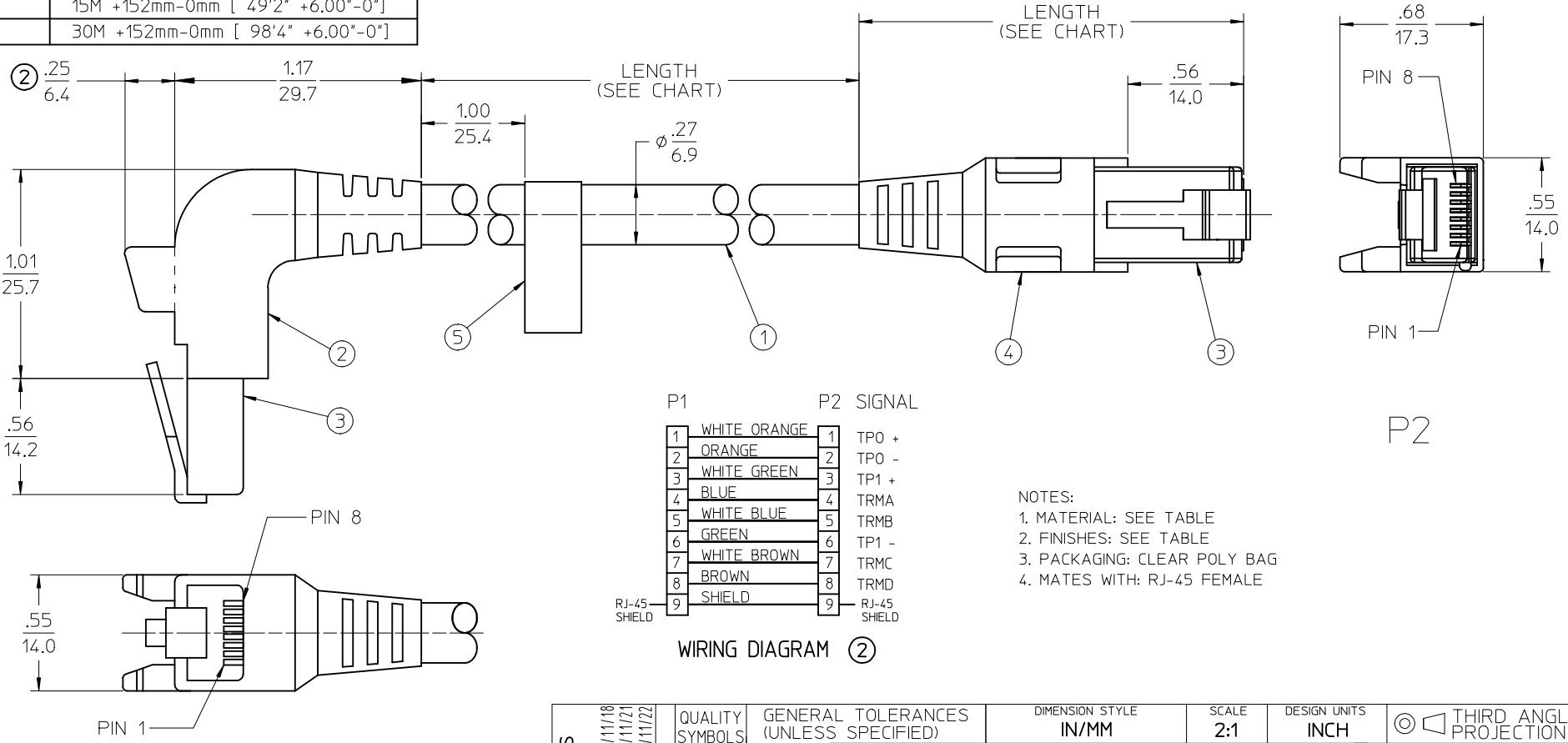


MATERIAL NO.	LENGTH
849019011	.6M +13mm-0 [ 2'0" +.50"-0"]
849019012	2M +42mm-0mm [ 6'7" +1.65"-0"]
849019013	5M +102mm-0mm [ 16'5" +4.00"-0"]
849019014	10M +152mm-0mm [ 32'10" +6.00"-0"]
849019015	15M +152mm-0mm [ 49'2" +6.00"-0"]
849019016	30M +152mm-0mm [ 98'4" +6.00"-0"]



P1		P2 SIGNAL	
1	WHITE ORANGE	1	TPO +
2	ORANGE	2	TPO -
3	WHITE GREEN	3	TP1 +
4	BLUE	4	TRMA
5	WHITE BLUE	5	TRMB
6	GREEN	6	TP1 -
7	WHITE BROWN	7	TRMC
8	BROWN	8	TRMD
9	SHIELD	9	RJ-45 SHIELD

NOTES:  
 1. MATERIAL: SEE TABLE  
 2. FINISHES: SEE TABLE  
 3. PACKAGING: CLEAR POLY BAG  
 4. MATES WITH: RJ-45 FEMALE

WIRING DIAGRAM (2)

ITEM	QTY	DESCRIPTION	MATERIAL	FINISH
5	1	LABEL	MYLAR	BLACK/CHROME
4	1	OVERMOLD, STRAIGHT, BLACK	PVC	BLACK
3	2	RJ-45 PLUG, SHIELDED	PH. BRNZ. CONT.	GOLD PLATED
2	A/R	OVERMOLD, 90 DEG.	PVC	BLACK
1	1	CABLE, 4P, SHIELDED	PVC JACKET	TEAL

<b>ADDED GULLWINGS</b> EC NO: ETC2006-0080 DRWNR:STONE 2005/11/18 CHKDR:DEROSS 2005/11/21 APPR:ROBERSS 2005/11/22	QUALITY SYMBOLS	GENERAL TOLERANCES (UNLESS SPECIFIED) <table border="1"> <tr> <th></th> <th>mm</th> <th>INCH</th> </tr> <tr> <td>4 PLACES</td> <td>± ---</td> <td>± ---</td> </tr> <tr> <td>3 PLACES</td> <td>± ---</td> <td>± .005</td> </tr> <tr> <td>2 PLACES</td> <td>± 0.13</td> <td>± .01</td> </tr> <tr> <td>1 PLACE</td> <td>± 0.25</td> <td>± ---</td> </tr> </table> ANGULAR ±1/2°		mm	INCH	4 PLACES	± ---	± ---	3 PLACES	± ---	± .005	2 PLACES	± 0.13	± .01	1 PLACE	± 0.25	± ---	DIMENSION STYLE <b>IN/MM</b>	SCALE <b>2:1</b>	DESIGN UNITS <b>INCH</b>	THIRD ANGLE PROJECTION
			mm	INCH																	
	4 PLACES		± ---	± ---																	
	3 PLACES		± ---	± .005																	
2 PLACES	± 0.13	± .01																			
1 PLACE	± 0.25	± ---																			
DRAWN BY R.STONE	DATE 09-23-05	TITLE <b>CORD ASSEMBLY, 90 DEG RJ-45 TO RJ-45 STRAIGHT</b>																			
CHECKED BY R.DEROSS	DATE 10-25-05	<b>MOLEX INCORPORATED</b>																			
APPROVED BY R.DEROSS	DATE 10-25-05	MATERIAL NO. <b>SEE CHART</b>	DOCUMENT NO. <b>SD-84901-019</b>	SHEET NO. <b>1 OF 1</b>																	