

10 9 8 7 6 5 4 3 2 1

F

E

D

C

B

A

F

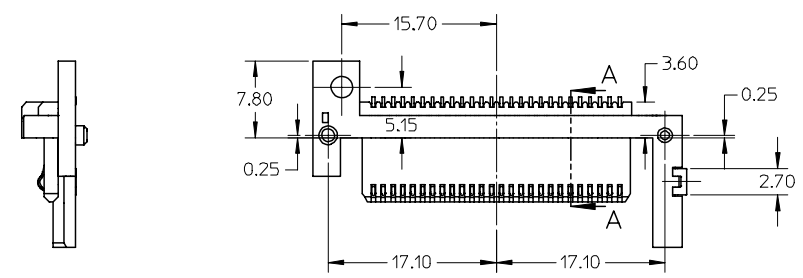
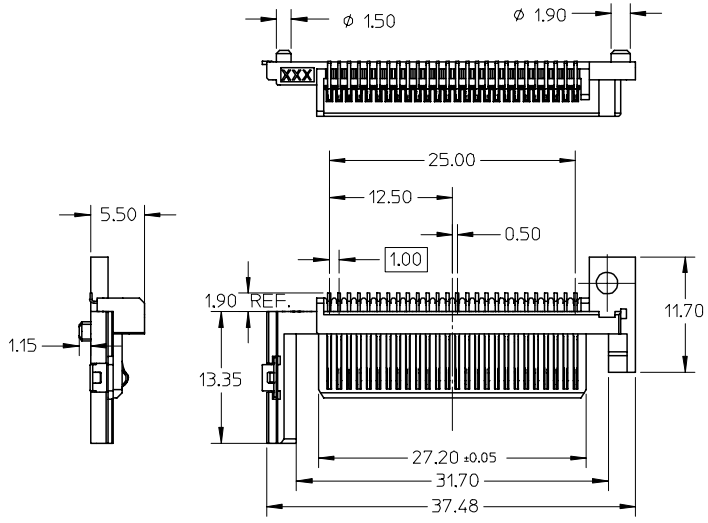
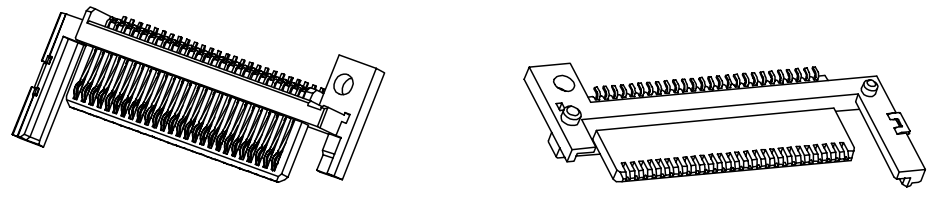
E

D

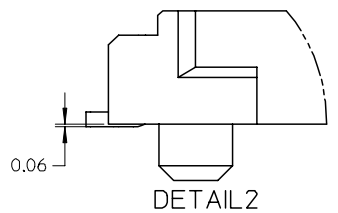
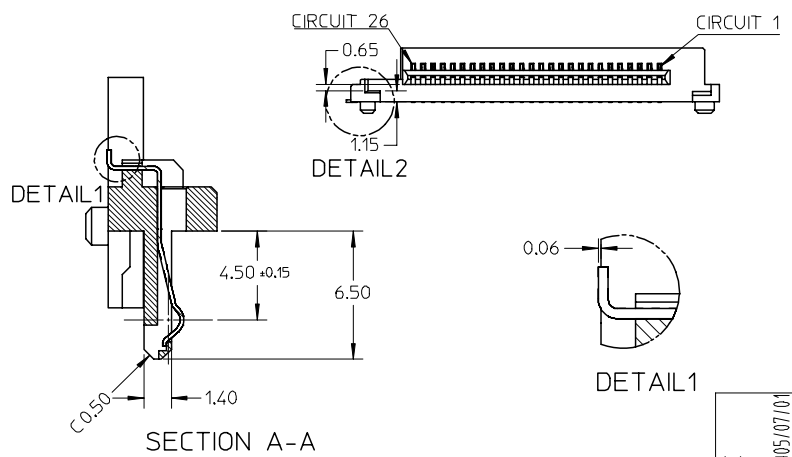
C

B

A



- NOTES:
- MATERIAL:
 - HOUSING: HIGH TEMPERATURE THERMOPLASTIC,
 - FITTING NAIL: COPPER ALLOY,
 - TERMINAL: COPPER ALLOY,
 - FINISH:
 - TERMINAL:
 - UNDERPLATING: Ni OVERALL,
 - SELECTIVE GOLD ON CONTACT AREA,
 - THICKNESS: 15 MICROINCH MINIMUM,
 - SELECTIVE PURE TIN ON SOLDER TAIL AREA,
 - THICKNESS: 40~100 MICROINCH,
 - COPLANARITY AT SOLDER TAIL TO BE 0.10 MAXIMUM,
 - APPLICABLE CARD SLOT PLEASE REFER TO SHEET 1
 - PRODUCT SPECIFICATION PLEASE REFER TO PS-47202-001



NEW RELEASE EC NO: SH2005-0413 DRWN: LBAO CHKD: APPR: YTYAP	2005/07/01 2005/07/01 2005/07/01	QUALITY SYMBOLS	GENERAL TOLERANCES (UNLESS SPECIFIED)		DIMENSION STYLE	SCALE	DESIGN UNITS	THIRD ANGLE PROJECTION			
		$\nabla=0$ $\sphericalangle=0$	mm	INCH	MM ONLY	2:1	METRIC				
			4 PLACES	± ---	± ---	DRAWN BY	DATE	TITLE			
			3 PLACES	± ---	± ---	R. BIAN	2004/12/14	EXPRESS CARD BOTTOM MOUNT PUSH-PUSH TYPE MOLEX INCORPORATED			
	2 PLACES	± 0.2	± ---	CHECKED BY	DATE	MATERIAL NO.					
	1 PLACE	± 0.3	± ---	APPROVED BY	DATE	47202-0002		SD-47202-001	2 OF 4		
	ANGULAR ± 2 °		DRAFT WHERE APPLICABLE MUST REMAIN WITHIN DIMENSIONS		SIZE		THIS DRAWING CONTAINS INFORMATION THAT IS PROPRIETARY TO MOLEX INCORPORATED AND SHOULD NOT BE USED WITHOUT WRITTEN PERMISSION				

9 8 7 6 5 4 3 2 1

10 9 8 7 6 5 4 3 2 1

F

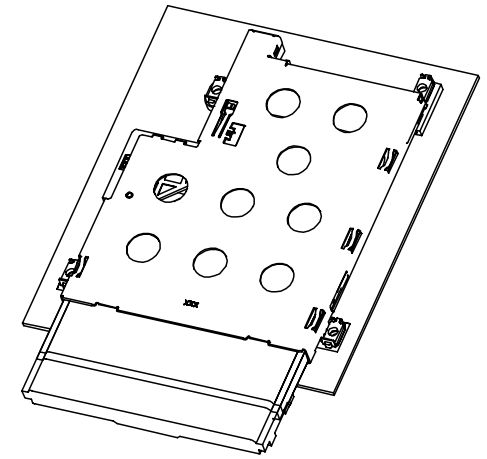
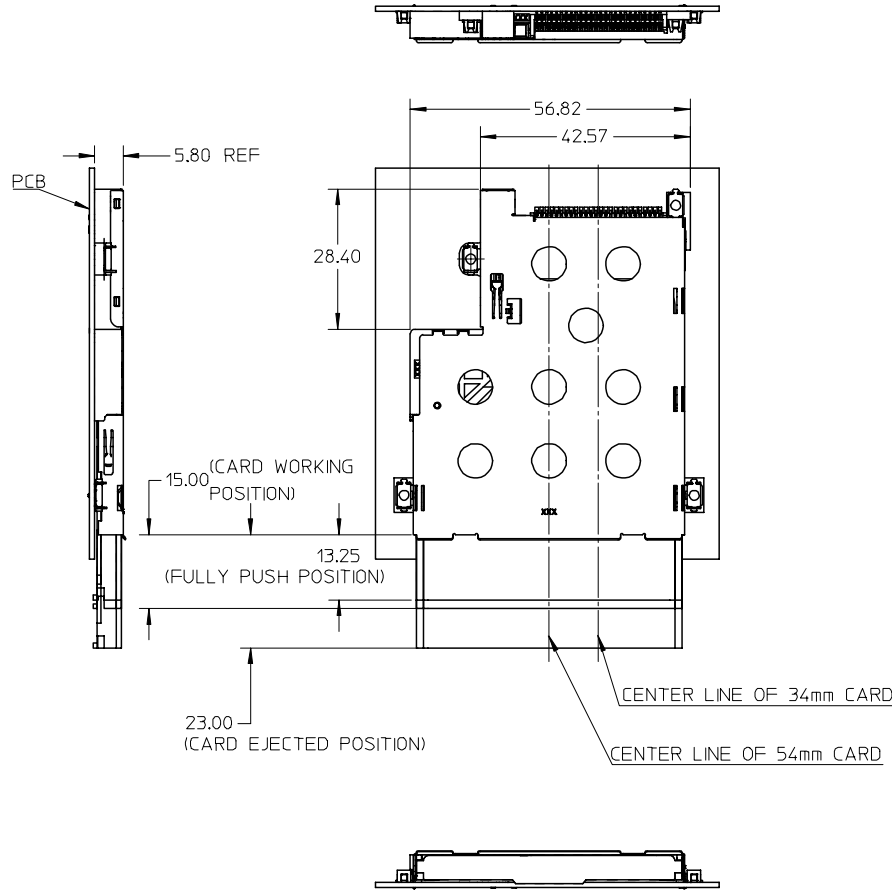
E

D

C

B

A

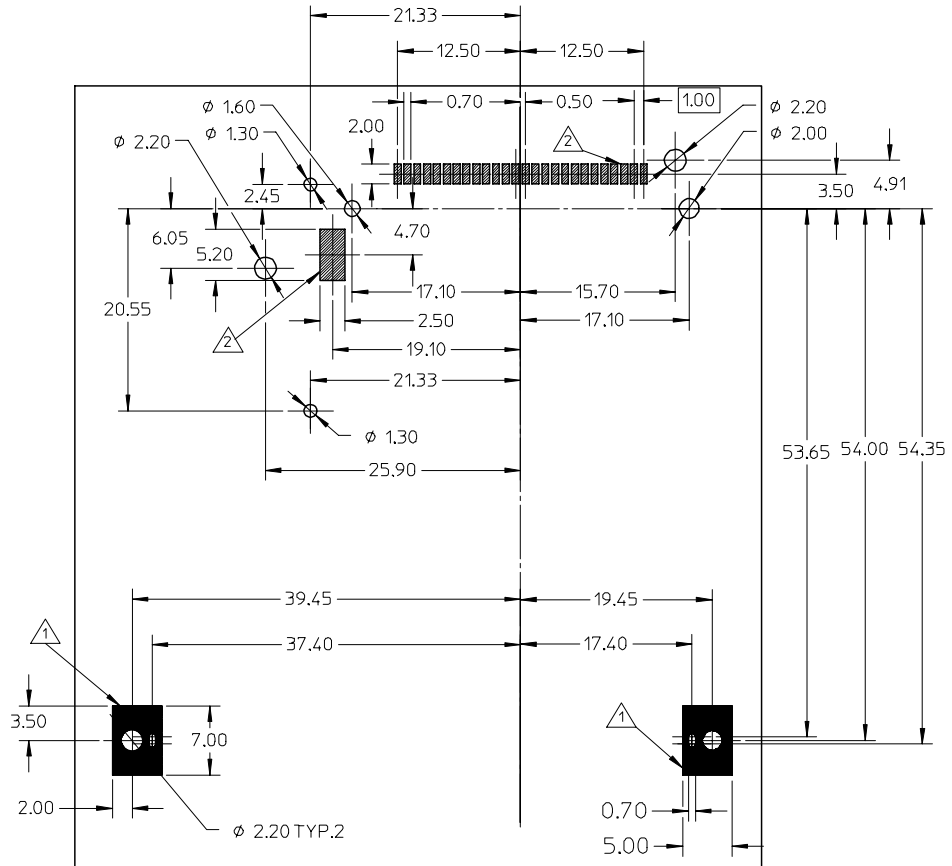


NOTES:

1. COMPONENTS:
 HEADER: SHEET 2
 EJECTOR: SHEET 1
2. PCB LAYOUT PLEASE REFER TO SHEET 4;
3. TAIL COMPLANARITY OF HEADER TO BE 0.10 MAXIMUM;
 TRUE POSITION IS 0.15 MAXIMUM BETWEEN SOLDER TAILS;
4. NON REFLOW PROCESS FOR CARD SLOT.
5. SCREW FASTENING TORQUE: 2.0 KGF-CM;
6. PRODUCT SPECIFICATION PLEASE REFER TO PS-47202-001.

NEW RELEASE EC NO: SH2005-0413 DRWN: LBAO CHKD: APPR: YTYAP	2005/07/01 2005/07/01 2005/07/01	DESCRIPTION REV	QUALITY SYMBOLS	GENERAL TOLERANCES (UNLESS SPECIFIED)	DIMENSION STYLE	SCALE	DESIGN UNITS	THIRD ANGLE PROJECTION	
			$\nabla=0$ $\sphericalangle=0$	mm INCH 4 PLACES ± --- ± --- 3 PLACES ± --- ± --- 2 PLACES ± 0.2 ± --- 1 PLACE ± 0.3 ± --- ANGULAR ± 2 °	MM ONLY	1:1	METRIC	DRAWN BY: R. BIAN DATE: 2004/12/14 CHECKED BY: DATE:	TITLE: EXPRESS CARD BOTTOM MOUNT PUSH-PUSH TYPE
				DRAFT WHERE APPLICABLE MUST REMAIN WITHIN DIMENSIONS	MATERIAL NO.	DOCUMENT NO.	SHEET NO.	APPROVED BY: DATE:	MOLEX INCORPORATED
					47202-0001	SD-47202-001	3 OF 4		

9 8 7 6 5 4 3 2 1



NOTES:
 1. GROUNDING PAD AREA
 2. SOLDER PAD AREA

RECOMMENDED PCB LAYOUT, COMPONENT SIDE

NEW RELEASE EC NO: SH2005-0413 DRWN: LBAO CHKD: APPR: YIYAP 2005/07/01	QUALITY SYMBOLS	GENERAL TOLERANCES (UNLESS SPECIFIED)	DIMENSION STYLE MM ONLY		SCALE 2:1	DESIGN UNITS METRIC	THIRD ANGLE PROJECTION																	
	$\nabla = 0$ $\nabla C = 0$	<table border="1"> <thead> <tr> <th></th> <th>mm</th> <th>INCH</th> </tr> </thead> <tbody> <tr> <td>4 PLACES</td> <td>± ---</td> <td>± ---</td> </tr> <tr> <td>3 PLACES</td> <td>± ---</td> <td>± ---</td> </tr> <tr> <td>2 PLACES</td> <td>± 0.05</td> <td>± ---</td> </tr> <tr> <td>1 PLACE</td> <td>±</td> <td>± ---</td> </tr> </tbody> </table>		mm	INCH	4 PLACES	± ---	± ---	3 PLACES	± ---	± ---	2 PLACES	± 0.05	± ---	1 PLACE	±	± ---	DRAWN BY R. BIAN		DATE 2004/12/14	TITLE EXPRESS CARD BOTTOM MOUNT PUSH-PUSH TYPE			
		mm	INCH																					
	4 PLACES	± ---	± ---																					
3 PLACES	± ---	± ---																						
2 PLACES	± 0.05	± ---																						
1 PLACE	±	± ---																						
	DRAFT WHERE APPLICABLE MUST REMAIN WITHIN DIMENSIONS		CHECKED BY		DATE																			
		ANGULAR ± 2 °		APPROVED BY		DATE	MATERIAL NO. 47202-0001																	
				DOCUMENT NO. SD-47202-001		SHEET NO. 4 OF 4																		