

PART NUMBER	REV	FIRST USED	TERMINATOR	FEED TYPE	DESCRIPTION
1339556-1	A	-	BENCH & LEADMAKER	MECH POST FEED	HD-I APPLICATOR
7-1339556-1	A	-	BENCH & LEADMAKER	MECH POST FEED	-1 AND SPARE PARTS
7-1339556-7	A	-	-	-	SPARE PARTS KIT

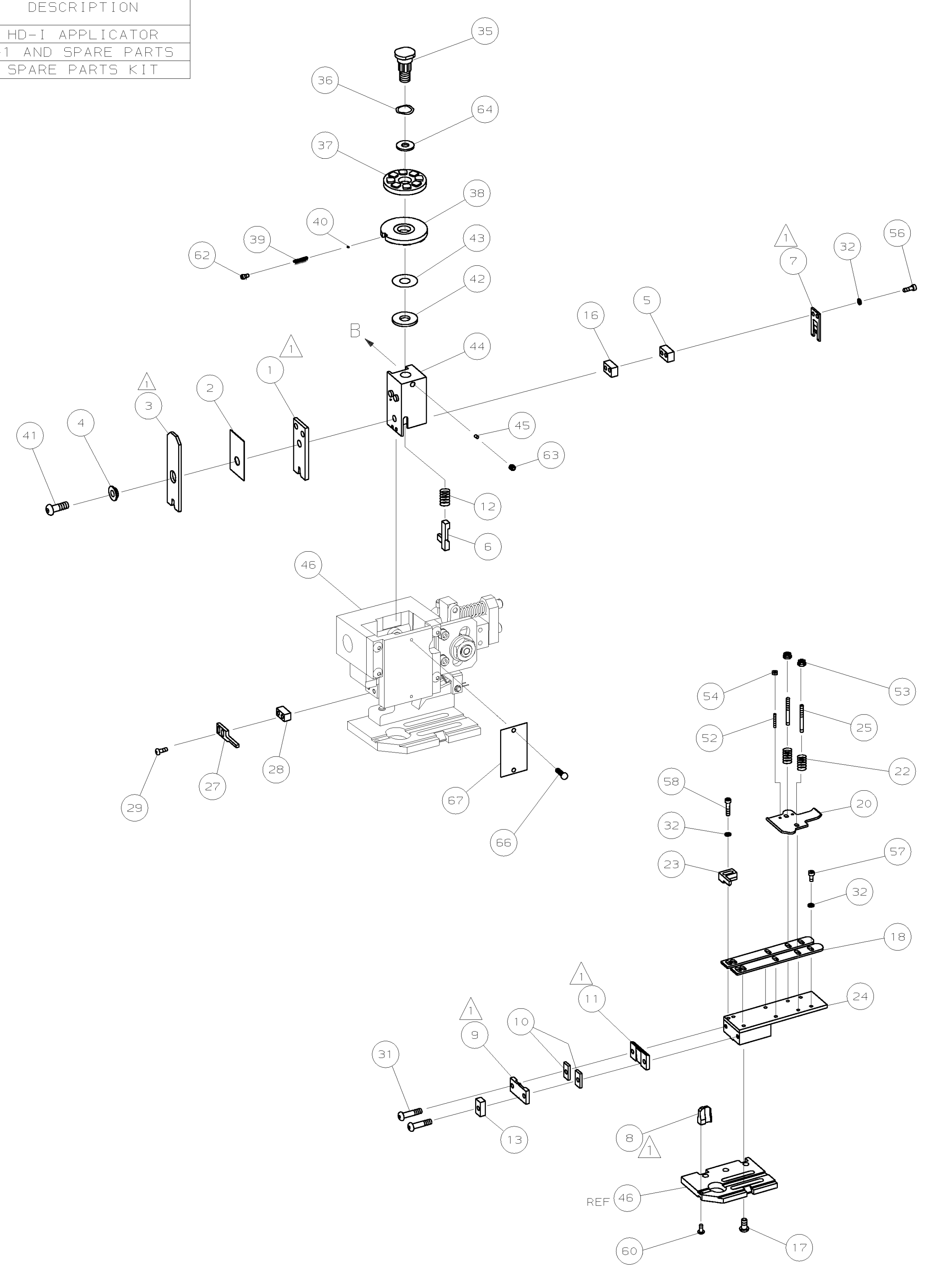
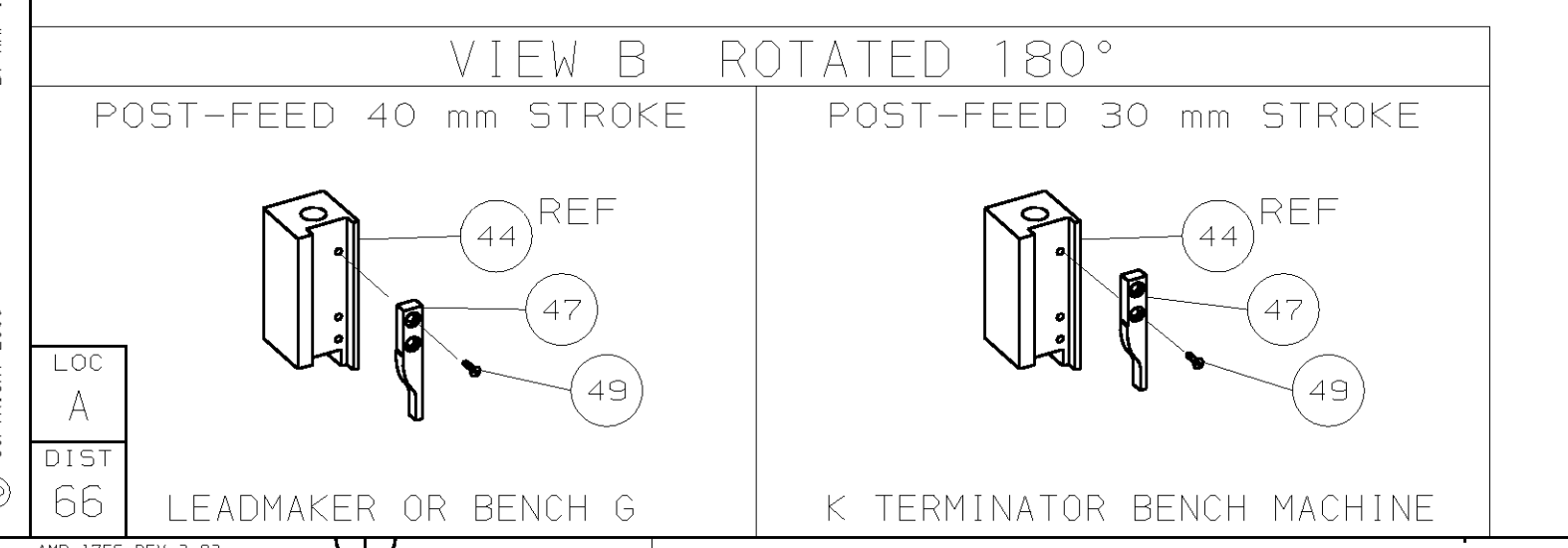
CRIMP DATA		AMP TERMINAL		AMP CRIMP SPECS	
TERMINAL NAME: .180 ϕ ([4.57] SHUR PLUG RECEPTACLE					
CRIMP	SIZE	TYPE	RANGE		
WIRE	2.29 [0.90 IN]	F	0.50-1.50mm ² or 20-16 AWG		
INSUL	3.56 [1.40 IN]	4 SCROLL	1.45-2.40 [0.57-.094 IN]		
WIRE STRIP LENGTH REFER TO APPL SPEC		APPL INSTRUCTION 408-8323			

TERMINAL APPL SPEC	FEED
114-2017	22.73 [0.895 IN]

TERMINALS APPLIED				
152403	-	-	-	-
152404	-	-	-	-
150628	-	-	-	-
150639	-	-	-	-
-	-	-	-	-
-	-	-	-	-
-	-	-	-	-
-	-	-	-	-
-	-	-	-	-
-	-	-	-	-

WIRE SIZE mm ² AWG	CRIMP HEIGHT	PIN PN AND LENGTH [IN]
1.50mm ²	1.83 ±0.05 [0.72 ±0.002 IN]	8-354778-3 [0.2910]
16AWG	1.75 ±0.05 [0.069 ±0.002 IN]	8-354778-9 [0.2940]
1.00mm ²	1.65 ±0.05 [0.065 ±0.002 IN]	9-354778-7 [0.2980]
18AWG	1.57 ±0.05 [0.062 ±0.002 IN]	354779-4 [0.3010]
0.75mm ²	1.55 ±0.05 [0.061 ±0.002 IN]	354779-7 [0.3025]
0.50mm ² or 20AWG	1.47 ±0.05 [0.058 ±0.002 IN]	1-354779-3 [0.3055]

- RECOMMENDED SPARE PARTS.
- GREASE RAM, CAM, CAM FOLLOWER AND FEED ROD LIGHTLY.
- LUBRICATE DAILY PER THE APPLICATOR INSTRUCTION SHEET SUPPLIED WITH THE APPLICATOR.
- THIS APPLICATOR HAS BEEN DESIGNED TO APPLY WIRES WITH THIN WALL (FLR) INSULATION. THE INSULATION CRIMP & APPLICABLE INSULATION RANGE MAY NOT CONFORM TO PARAMETERS LISTED IN THE APPLICATION SPECIFICATION.



QTY	REQD PER ASSY	PART NO	DESCRIPTION	ITEM NO		
-	1	1	1339556	PRINT, APPLICATOR LOG SHEET	73	
-	1	1	1338705-2	DOCUMENTATION PACKAGE	72	
-	-	-	-	-	70	
-	-	-	-	-	69	
-	-	-	-	-	68	
-	1	1	461264-1	PLATE, IDENTIFICATION	67	
-	2	2	21017-2	SCR,DRIVE (#2X.19) ID PLATE	66	
-	-	-	-	-	65	
-	1	1	986950-1	WASHER, FLAT PRECISION	64	
-	1	1	3-18031-0	SCR,SKT SET (M6X6) RAM	63	
-	1	1	18023-9	SCR,SKT CAP (M4X6) CP D5C	62	
-	-	-	-	-	61	
-	1	1	18024-7	SCR,BHC (M4X10) ANVIL	60	
-	-	-	-	-	59	
-	2	2	1-18023-3	SCR,SHC (M4X16) HOLD DOWN	58	
-	5	5	1-18023-0	SCR,SHC (M4X8) STRIP GUIDE	57	
-	2	2	1-18023-3	SCR,SHC (M4X16) SLUG BLADE	56	
-	-	-	-	-	55	
-	2	2	18029-1	NUT, HEX (M3) DRAG	54	
-	2	2	986965-1	NUT, HEX SL (M4) DRAG STUD	53	
-	2	2	2-18032-2	SCR,SKT SET (M3X10) DRAG	52	
-	-	-	-	-	51	
-	-	-	-	-	50	
-	1	1	18024-3	SCR,BHC (M3X10) CAM	49	
-	-	-	-	-	48	
-	1	1	1338676-1	CAM, POST-FEED 30 & 40 mm ST	47	
-	1	1	1338662-1	APPLICATOR, BASIC (SUBASSY)	46	
-	1	1	690191-1	PLUG, NYLON	45	
-	1	1	1320998-1	RAM	44	
-	1	1	690125-1	WASHER, LAMINATED	43	
-	1	1	690124-1	WASHER, RAM	42	
-	1	1	2-18024-6	SCREW,BHC (M8X25) CRIMPER	41	
-	1	1	23241-1	BALL, STEEL	40	
-	1	1	2-22278-7	SPRING, COMPRESSION	39	
-	1	1	1320922-1	DISC, INSULATION	38	
-	1	1	354777-1	WIRE DISC, PLASTIC	37	
-	1	1	22480-5	WASHER, SPRING	36	
-	1	1	690212-1	POST, RAM	35	
-	-	-	-	-	34	
-	-	-	-	-	33	
-	9	9	18025-2	WASHER, LOCK (M4) SHEAR BL	32	
-	2	2	1-18024-0	SCR,BHC (M4X20) SHEAR PL	31	
-	-	-	-	-	30	
-	2	2	18024-8	SCR,BHC (M4X12) STRIPPER	29	
-	1	1	3-690451-2	SPACER, STRIPPER	28	
-	1	1	240639-1	STRIPPER	27	
-	-	-	-	-	26	
-	2	2	1320906-1	DRAG, STUD	25	
-	1	1	1320995-1	STRIP GUIDE	24	
-	1	1	240825-2	PLATE, STRIP HOLD DOWN	23	
-	2	2	4-22281-1	SPRING, DRAG	22	
-	-	-	-	-	21	
-	1	1	1338665-1	DRAG, STOCK	20	
-	-	-	-	-	19	
-	2	2	1338663-5	GUIDE, LOWER STRIP	18	
-	4	4	1-18024-8	SCR,BHC (M6X12) STRIP 6D PL	17	
-	1	1	1338708-1	SPACER, SLUG BLADE	16	
-	-	-	-	-	15	
-	-	-	-	-	14	
-	1	1	690481-4	SPACER, HOLD DOWN	13	
-	1	1	23846-1	SPRING, HOLD DOWN	12	
-	1	1	240644-1	PLATE, REAR SHEAR	11	
-	2	2	240645-1	SPACER, SHEAR PLATE	10	
-	1	1	1-690482-2	PLATE, FRONT SHEAR	9	
-	1	2	1	1333217-8	ANVIL	8
-	1	1	690474-7	BLADE, SLUG	7	
-	1	1	455892-5	HOLD DOWN, TERMINAL	6	
-	1	1	4-240641-5	SPACER, SLUG BLADE	5	
-	1	1	238009-1	SPACER, BLOCK CRIMPER	4	
-	1	2	1	2-576246-1	CRIMPER, INSULATION	3
-	1	1	455888-7	SPACER, CRIMPER	2	
-	1	2	1	2-456406-3	CRIMPER, WIRE	1

DIMENSIONS: mm [INCHES]		MATL	HT TR	FIN
DO NOT SCALE PRINT.				
TOLERANCES UNLESS OTHERWISE SPECIFIED:				
1 PLC DEC ±				
2 PLC DEC ±				
3 PLC DEC ±				
ANGLES ±				
SURF TEXTURE: ✓				
REMOVE BURRS, BREAK SHARP EDGES RO.38 MAX				
DR M. CLIFFORD		APP F. BACKHURST		AMP
CHK -		REL 31-05-01		AMP Incorporated Harrisburg, PA 17105-3608
NAME END FEED HD-I APPLICATOR				MACHINE REF HD-I APPL
SCALE	DWG NO	1339556	SHEET 1 OF 1	REV A
CASE CODE 00779	CUSTOMER AND ASSEMBLY DRAWING			RESTRICTED TO

THIS DRAWING IS A CONTROLLED DOCUMENT.

LAYOUT L1339556

SET UP GAGE 458638-3

RELEASED FOR PUBLICATION BY AMP INCORPORATED. ALL RIGHTS RESERVED.

THIS DRAWING IS UNRELEASED.

AMP 1756 REV 3-92