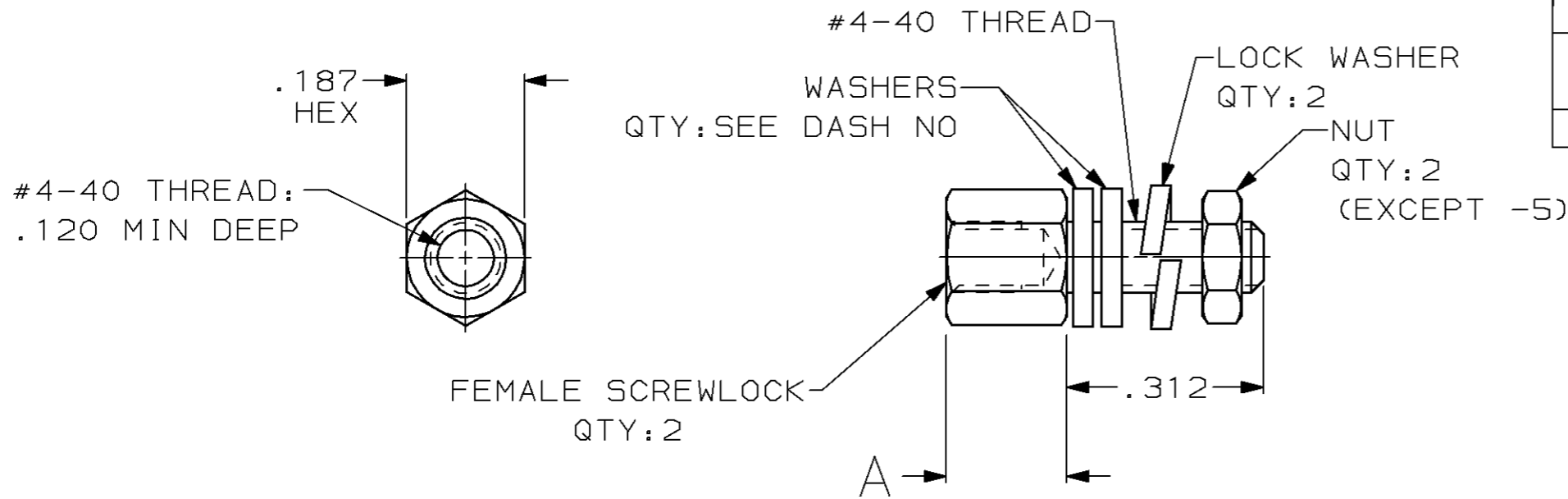


THIS DRAWING IS UNPUBLISHED. RELEASED FOR PUBLICATION, 19 .
 © COPYRIGHT 19 BY AMP INCORPORATED. ALL INTERNATIONAL RIGHTS RESERVED.

LOC	DIST	P	F	ZONE	LTR	DESCRIPTION	DATE	APPD
BD	48				F1	ADDED 1--2 PER NPR 4839	07/07/93	NB
					G	OBS 1-1 PER EC 0020-1514-93	04/15/94	LF
					H	OBSOLETE -9 PER EC 0020-667-95	02 FEB 96	CS
					J	OBS -12 PER EC 0420-141-96	17 SEPT 97	SB



- ① ZINC PLATED PER ASTM B633, TYPE II, CLASS SCI, YELLOW CHROMATE.
- ② ZINC PLATED PER ASTM B633, TYPE III, CLASS SCI, CLEAR CHROMATE.
- 3. PARTS PACKAGED UNASSEMBLED.
- ④ PARTS PACKED AS A UNIT KIT.
- ⑤ PARTS INDIVIDUALLY BULK PACKED & SHIPPED AS A UNIT PACKAGE.
- 6. IDENTIFIED BY MIL SPEC PART NUMBER M24308/26-01 FOR -8 ONLY & AMP PART NUMBER (FOR ALL DASH NUMBERS).
- ⑦ SMALL PACK PACKAGING.

OBSOLETE	⑦	4	.188	①	1-205817-2	
OBSOLETE	⑤	0	.188	②	1-205817-1	
OBSOLETE	⑤	0	.188	②	1-205817-0	
OBSOLETE	⑤	6	.188	①	205817-9	
	④	6	.188	①	205817-8	
OBSOLETE	⑤	4	.191±.002	①	205817-7	
OBSOLETE	④	4	.191±.002	①	205817-6	
	⑤	2	.188	②	205817-5	
	⑤	4	.188	②	205817-4	
	④	4	.188	②	205817-3	
	⑤	4	.188	①	205817-2	
	④	4	.188	①	205817-1	
		PACKAGING	NO OF WASHERS	A	FINISH	PART NUMBER

DO NOT SCALE PRINT, UNLESS SPECIFIED DIMENSIONS IN INCHES TOLERANCES ON: 2 PLC DEC ± - 3 PLC DEC ± .005 ANGLES ± -	DR 4-11-90 J GALLUCCI BG	AMP AMP INCORPORATED Harrisburg, Pa. 17105		
	CHK 6-15-90 W G LENKER			
	MATERIAL COLD ROLLED STEEL PER ASTM A108	APPD 7-11-90 J E WESTMAN	NAME KIT, SCREWLOCK, FEMALE, AMPLIMITE™ HD-20	
	FINISH SEE TABLE	APPD 7-16-90 J ASSINI PRODUCT SPEC -	SIZE B	FSCM NO 00779
	WEIGHT -	SCALE 4:1	SHEET 1 OF 1	