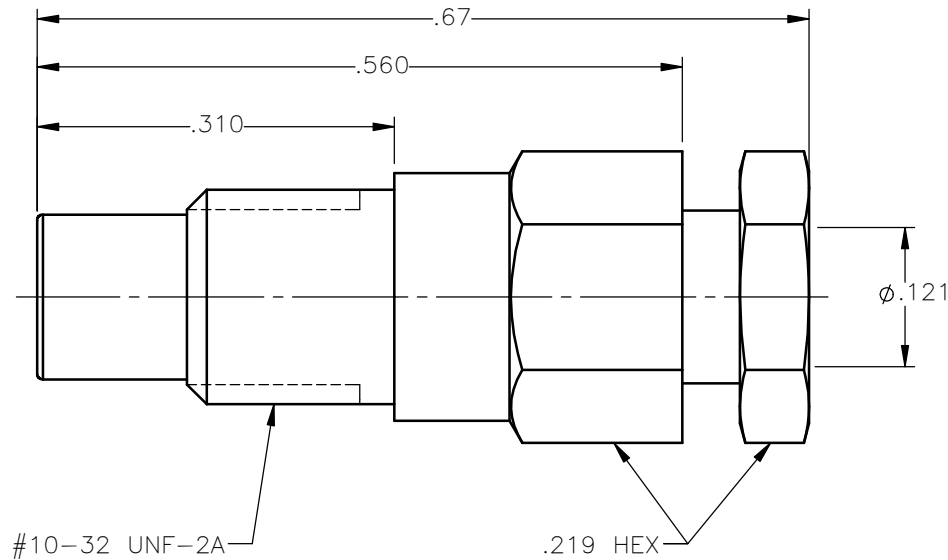


| REVISIONS | | | |
|-----------|-----------------|----------|----------|
| REV. | DESCRIPTION | DATE | APPROVED |
| A | INITIAL RELEASE | 12/14/16 | D.N. |





NOTES:

MATERIALS:

1. INSULATORS = VIRGIN WHITE TEFLON PER ASTM D1710, GRADE 1, TYPE I, CLASS "B".
2. ALL OTHER METAL PARTS = BRASS PER ASTM B16, ALLOY C36000, TEMPER H02.

FINISHES:

1. CONTACT = GOLD PLATE PER ASTM B488-11, TYPE II, 50 μ in MIN, GRADE C, OVER 100 TO 200 μ in STRESS FREE SULFAMATE NICKEL PER AMS-QQ-N-290.
2. ALL OTHER METAL PARTS = GOLD PLATE PER ASTM B488-11, TYPE II, 30 μ in MIN, GRADE C OVER 100 TO 200 μ in COPPER STRIKE PER AMS 2418.

| | | | | | | |
|---|-----------------------|----------|--|--|---------------|--------------|
| UNLESS OTHERWISE SPECIFIED DIMENSIONS ARE IN INCHES TOLERANCES ON | DWN: | DATE |  Property of Radiall This document cannot be reproduced or communicated to a third party without prior written permission of RADIALL. |  | | |
| | D.N. | 12/14/16 | | | | |
| DECIMAL | ANGLE | CHKD: | DATE | SMC STRAIGHT MALE JACK COMPRESSION TYPE FOR RG-316 & SIMILAR CABLES | | |
| | | N.D. | 12/14/16 | | | |
| | | APVD: | DATE | | | |
| | | J.M. | 12/14/16 | | | |
| REFERENCE: | MATERIALS & FINISHES: | | SIZE | FSCM NO. | DWG NO. | REV |
| ORIGINATED: D.N. DATE: 12/14/16 | SEE NOTES | | A | 19505 | 1001-1551-003 | A |
| | | | SCALE 6:1 | THIRD ANGLE PROJECTION | | SHEET 1 OF 1 |

1001-1551-003