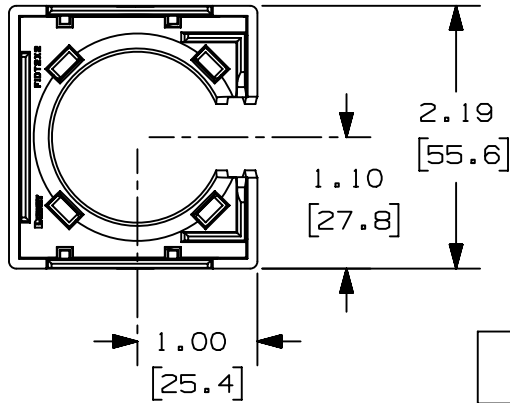


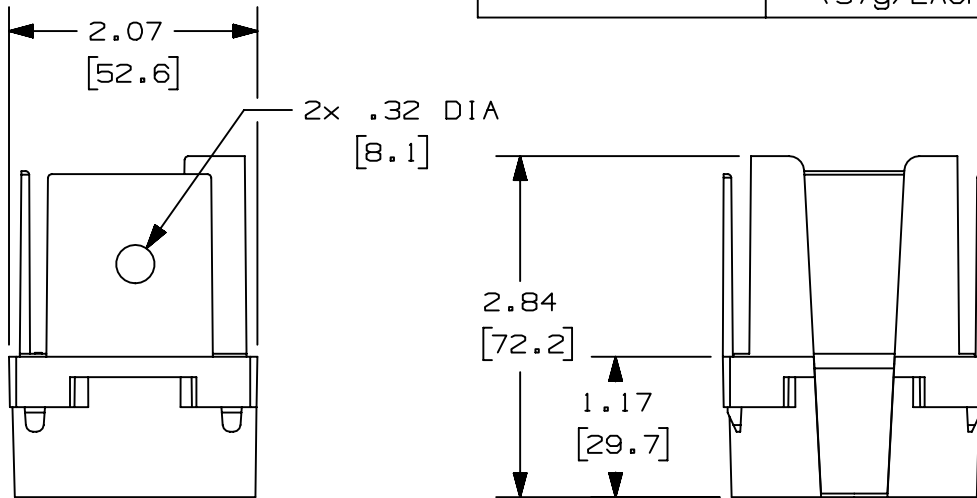
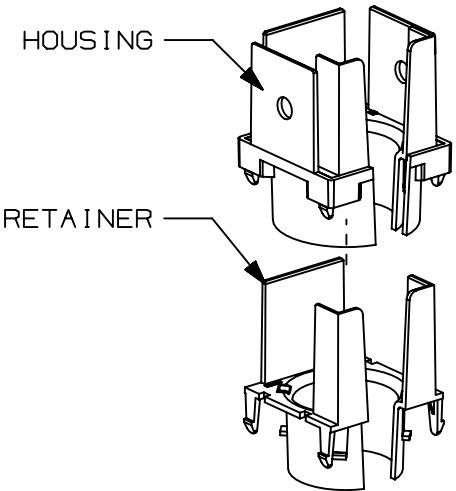
THIS COPY IS PROVIDED ON A RESTRICTED BASIS AND IS NOT TO BE USED IN ANY WAY DETRIMENTAL TO THE INTERESTS OF PANDUIT CORP.

**NOTES:**

1. SEE CURRENT CATALOG FOR ADDITIONAL PART SUFFIXES TO INDICATE COLOR AND/OR PACKAGE QUANTITY.
2. THE FIBER-DUCT 2x2 AND FIBERRUNNER 2x2 1-PORT SPILL-OUT TO 1 1/2" I.D. CORRUGATED LOOM TUBING IS USED TO CREATE A SINGLE PORT FLEXIBLE SPILL-OUT INTO EQUIPMENT FRAMES OR TELECOMMUNICATIONS CABINETS. THE SPILL-OUT ACCEPTS ONE (1) PIECE OF 1 1/2" (38.1) I.D. SLIT CORRUGATED LOOM TUBING (CLT150F-X\*\*, CLT150F-T20)
3. DIMENSIONS IN PARENTHESES ARE IN METRIC.
4. PARTS SUPPLIED:  
 (1) - HOUSING  
 (1) - RETAINER



PANDUIT PART NUMBER	WEIGHT	MATERIAL
FIDT2X2**	0.08 LB/EACH (37g/EACH)	ABS
FIDT2X2L**	0.08 LB/EACH (37g/EACH)	PC/ABS



TITLE		FIBER-DUCT 2X2 AND FIBERRUNNER 2X2 1-PORT SPILL-OUT TO 1-1/2" I.D. CORRUGATED LOOM TUBING (FIDT2X2**, FIDT2X2L**) CUSTOMER DRAWING	
ITEM REVISION NAME		D38388BF/01	
DATASET FILE NAME		D38388BF_DC/01C	
		<b>PANDUIT</b>	
		MATERIAL: SEE PART NUMBER TABLE ABOVE	
		DRAWING NUMBER: 38388-03	
		THIRD ANGLE PROJECTION	
DRAWN BY	DATE	CHK	SCALE
JHNU	05-13-02	WAB	NONE
REV	DATE	BY	CHK
03B	8/20/20	MEX-JAGC	DWR
3	05-06-13	JBN	RTFI
DESCRIPTION		ECN	
ADDED PART NUMBER		V09002DZ/11	
UPDATED DRAWING BORDER & TITLE BLOCK		38388-03	
SHT 1 OF 1		A	

D10100DA/15