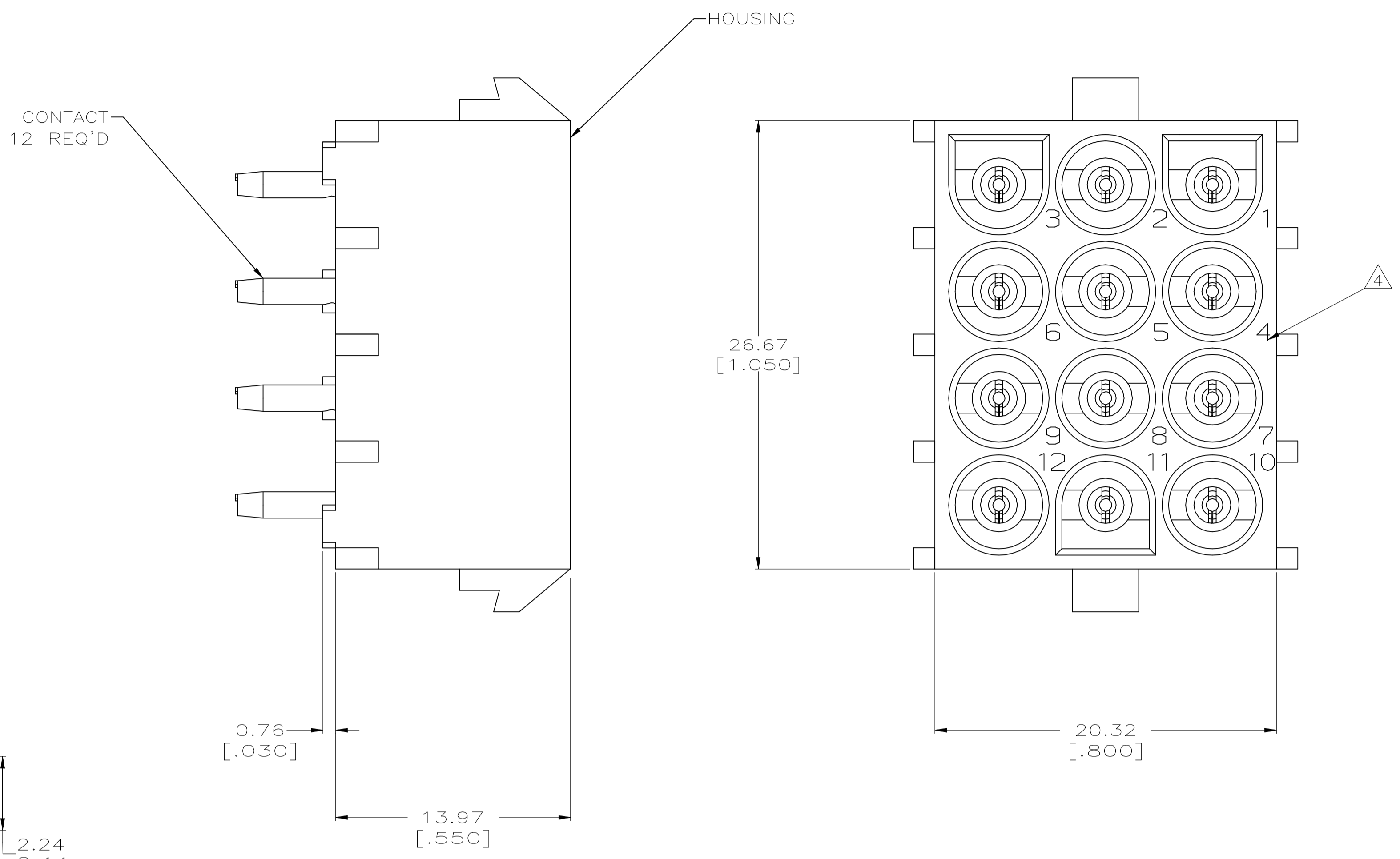
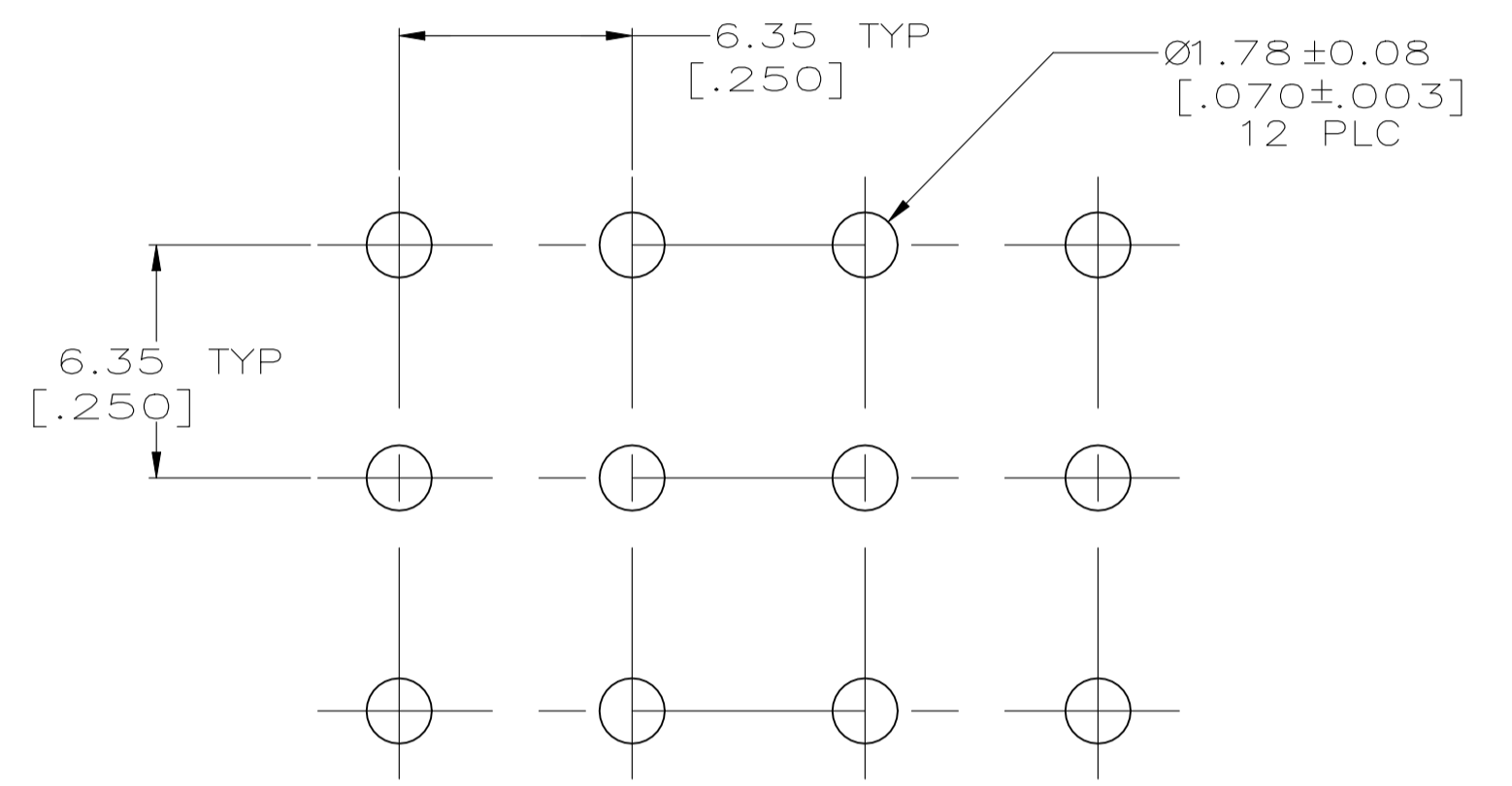


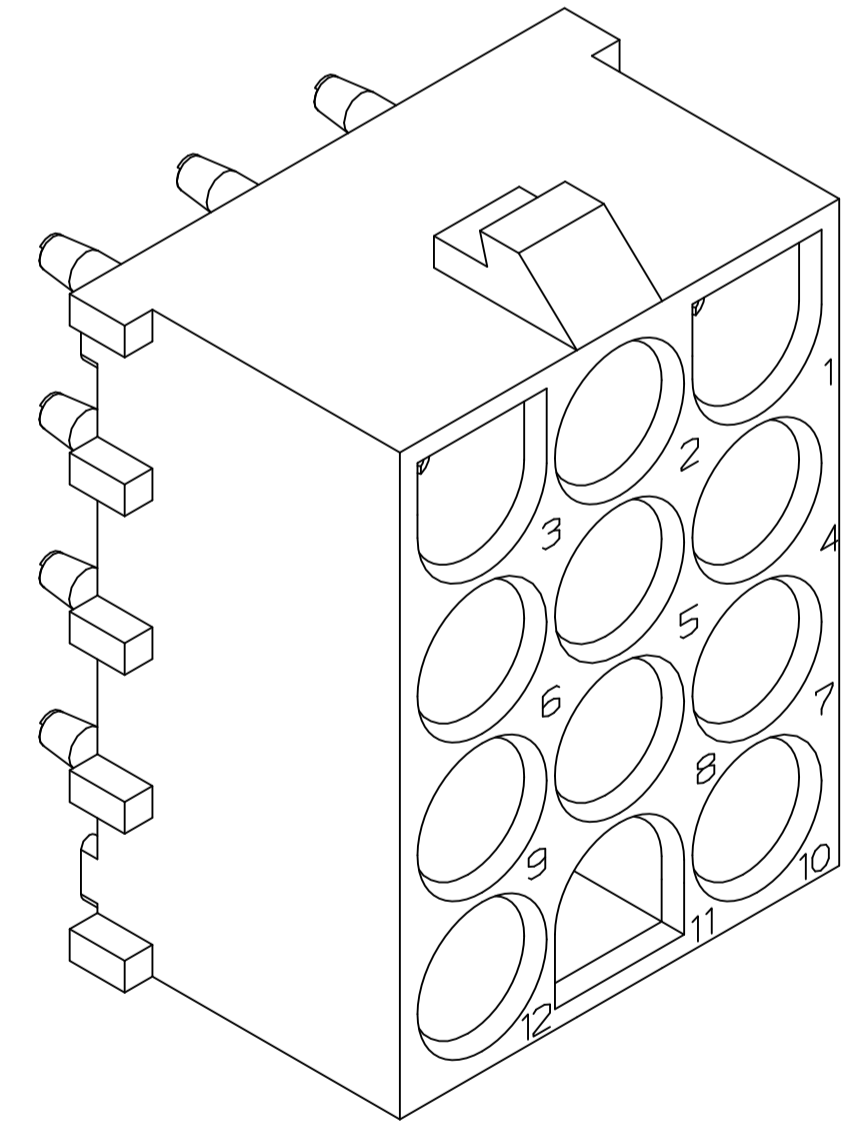
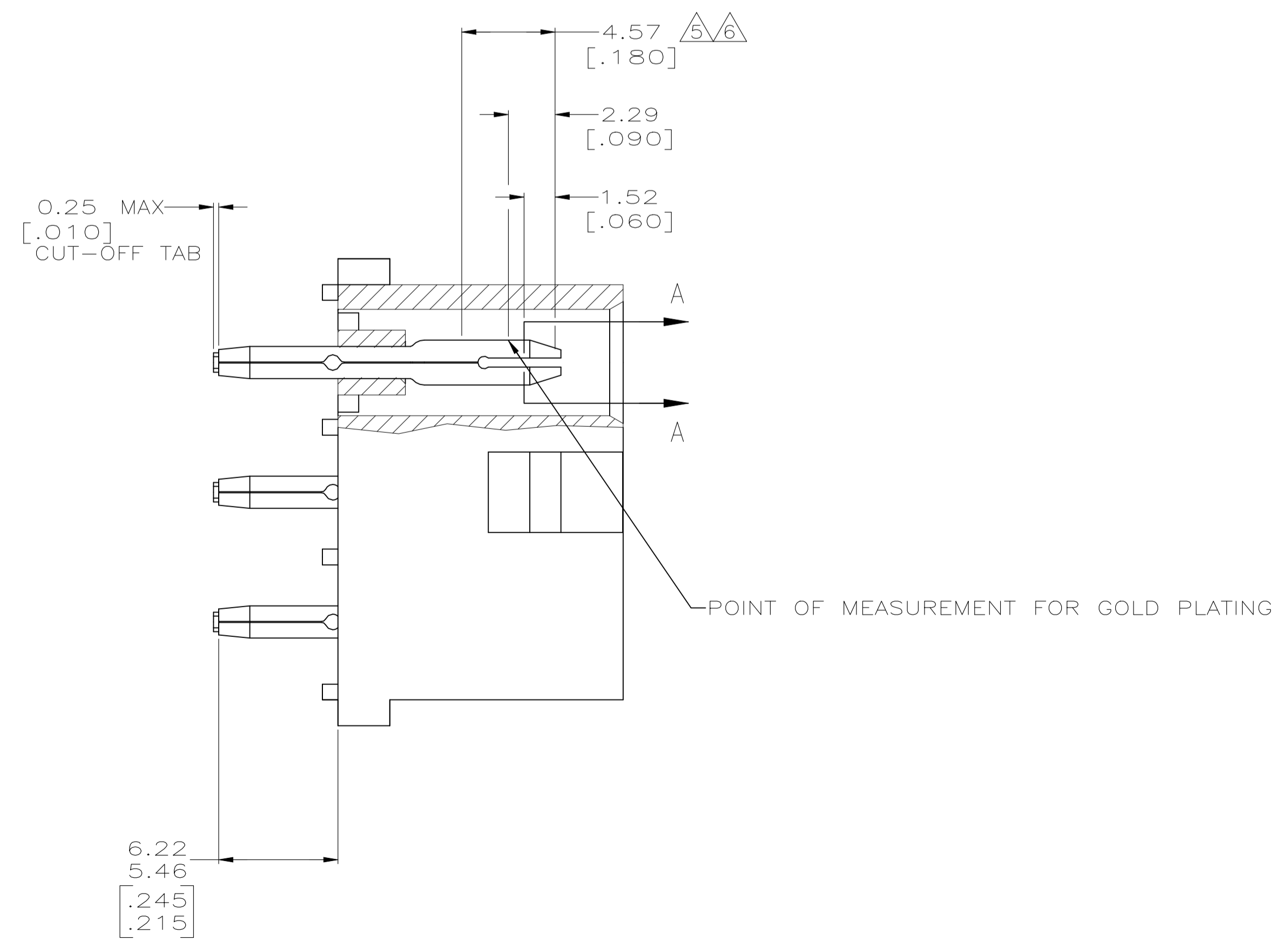
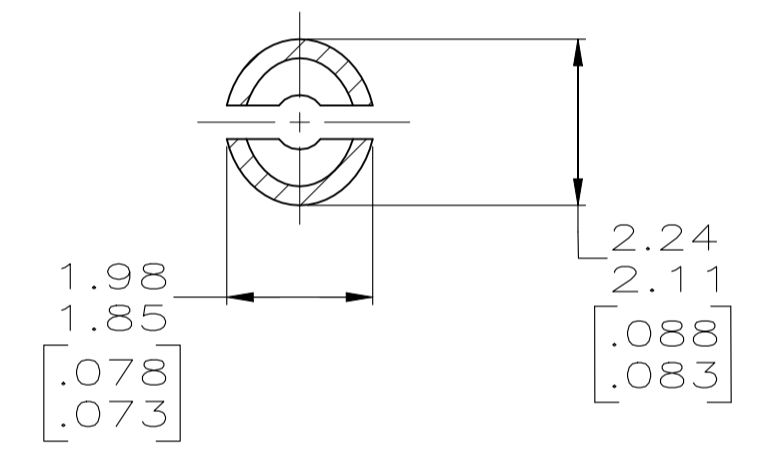
REVISIONS					
REV	DESCRIPTION	DATE	BY	APP'D	
T3	REVISED PER ECR-21-119230	02NOV2021	SS	VS	



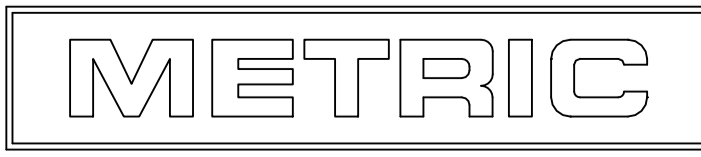
- PARTS COMPLY WITH TE SOLDERABILITY SPECIFICATION 109-11-3.
- MATES WITH 480708 USING SOCKET CONTACTS.
- DIMENSIONS IN BRACKETS ARE IN INCHES.
- CIRCUIT IDENTIFICATION CHARACTERS ARE ADJACENT TO THE INDICATED CAVITIES, BUT LOCATION AND ORIENTATION MAY DIFFER FROM PRINT.
- CONTACT IS PLATED OVERALL WITH 0.00127[.000050] NICKEL, THEN 0.00076[.000030] GOLD OVER CONTACT LENGTH INDICATED AND MATTE TIN LEAD ON SOLDER TAIL END.
- CONTACT IS PLATED OVERALL WITH 0.00127[.000050] NICKEL, THEN 0.00076[.000030] GOLD OVER CONTACT LENGTH INDICATED AND MATTE TIN ON SOLDER TAIL END.
- OBSOLETE PARTS: OBSOLETE CIS STREAMLINING PER D.RENAUD/D.SINISI
- DIMENSIONS SHOWN REPRESENT PRODUCT IN DRY CONDITION. ADDITIONAL 2% GROWTH DUE TO END USE LOCATION MOISTURE ABSORPTION MAY OCCUR AND SHOULD BE ACCOUNTED FOR.



RECOMMENDED MOUNTING HOLE PATTERN FOR A 3.18 [.125] THK P.C. BOARD



7	OBSOLETE	PH BRZ	6	NYLON, UL94V-2	NATURAL	-350587-4-
7	OBSOLETE	PH BRZ	5	NYLON, UL94V-2	NATURAL	-350587-2-
		PH BRZ	PRE-TIN	NYLON, UL94V-2	NATURAL	350587-1
		MATERIAL	FINISH	MATERIAL	COLOR	PART NO



THIS DRAWING IS A CONTROLLED DOCUMENT.		DIN K. WHITAKER 1-19-98	TE Connectivity	
DIMENSIONS: mm [INCHES]		CHK R. SWING 1-19-98	NAME	
TOLERANCES UNLESS OTHERWISE SPECIFIED:		APVD M. TRULL 1-19-98	PRODUCT SPEC	
0. PLC	± -	108-1053		
1. PLC	± -	APPLICATION SPEC		
2. PLC	± 0.13[.005]	114-1010		
3. PLC	± -	WEIGHT 0.000000		
4. PLC	± -	SIZE CAGE CODE DRAWING NO		
ANGLES	± -	A1 00779 C=350587		
MATERIAL	SEE TABLE	CUSTOMER DRAWING		
FINISH	SEE TABLE	SCALE 5:1 SHEET 1 of 1 REV T3		