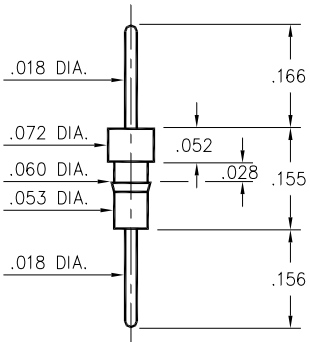


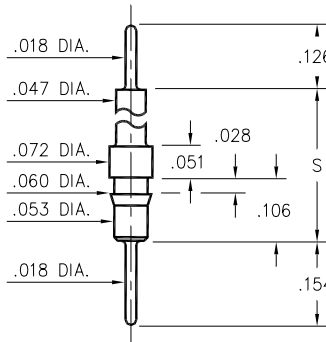
### 0504/0505



Basic Part Number	Pin Material
0504-0	Ph Br. 544
0505-0	Brass 360

**050X-0-00-XX-00-00-03-0**  
Press-fit in .057 mounting hole

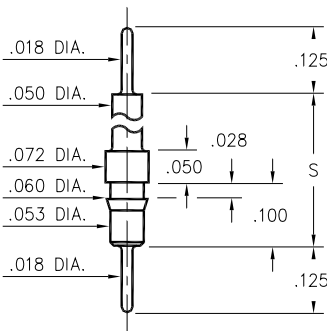
### 5510/5511



Basic Part Number	Standoff Height S
5510-0	.331
5511-0	.606

**551X-0-00-XX-00-00-03-0**  
Press-fit in .057 mounting hole

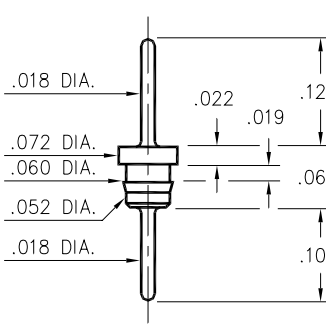
### 4259



Basic Part Number	Standoff Height S
4259-1	.210
4259-2	.335
4259-3	.585
4259-4	.835

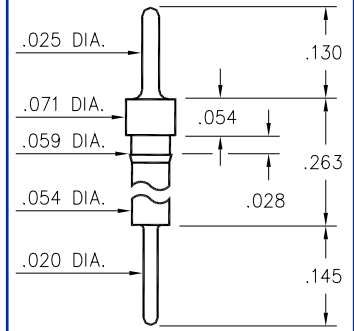
**4259-X-00-XX-00-00-03-0**  
Press-fit in .057 mounting hole

### 3516



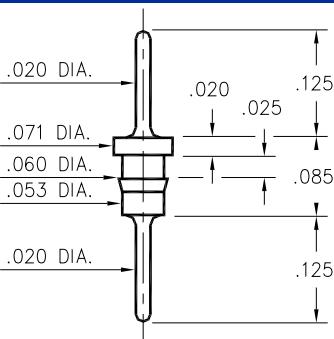
**3516-0-00-XX-00-00-03-0**  
Press-fit in .057 mounting hole

### 8859



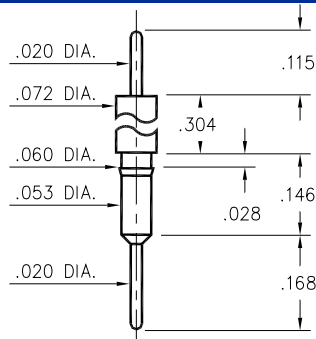
**8859-0-00-XX-00-00-03-0**  
Press-fit in .056 mounting hole

### 6585



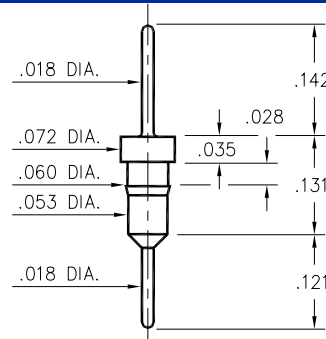
**6585-0-00-XX-00-00-03-0**  
Press-fit in .057 mounting hole  
Pin material is Ph Br 544 (B2)

### 3403



**3403-0-00-XX-00-00-03-0**  
Press-fit in .057 mounting hole

### 3404



**3404-0-00-XX-00-00-03-0**  
Press-fit in .057 mounting hole

## SPECIFICATIONS

**PIN MATERIAL:**  
Brass Alloy 360, 1/2 Hard  
(Except where noted)

**DIMENSION IN INCHES**  
**TOLERANCES ON:**  
LENGTHS: ±.005  
DIAMETERS: ±.002  
ANGLES: ± 2°

**ORDER CODE: XXXX - X - 00 - XX - 00 - 00 - 03 - 0**

**BASIC PART #** →

**SPECIFY PIN FINISH:**  
**01** 200µ" TIN/LEAD OVER NICKEL  
**15** 10µ" GOLD OVER NICKEL  
**21** 20µ" GOLD OVER NICKEL  
**34** 50µ" GOLD OVER NICKEL