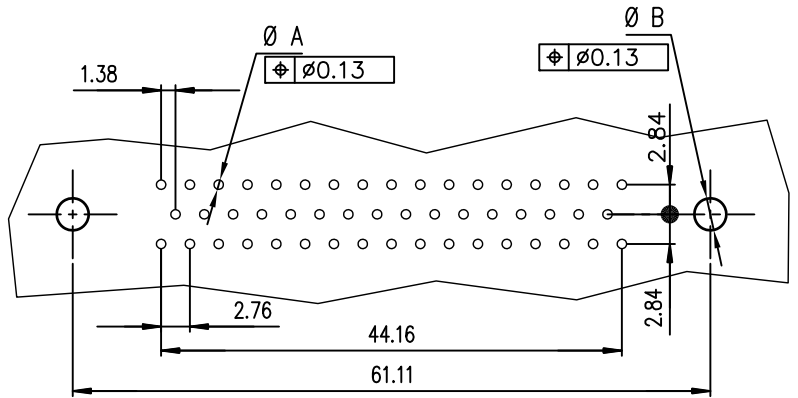
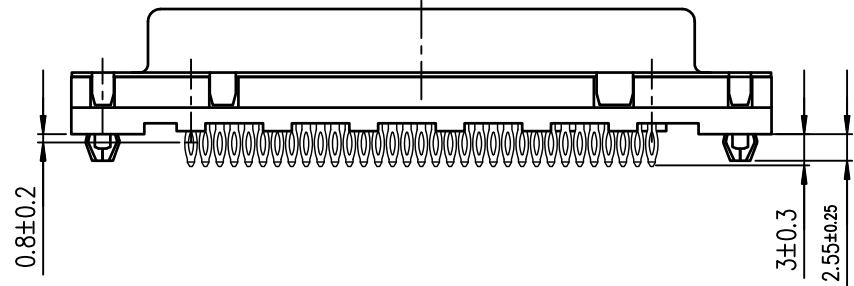


PC board drilling dimensions
(after plating - thickness: 1.60 to 3.20 mm)



ROHS PART NUMBER

PART NUMBER	
200 Mating	D50S91C4GL00LF
500 Mating	D50S91C6GL00LF

GENERAL CHARACTERISTICS AND ROHS INFORMATIONS:
SEE DRAWING C01-8646-0001

mat'l. code		surface ISO 1302 ✓		tolerance ISO 406 ISO 1101		projection		product family D-SUB	
ltr	ecn no	dr	date	tolerances unless otherwise specified		mm		title	
F	ELX-I-21654	AB	2015-10-26	angles	linear	.0±0.1	←	FEMALE DELTA-D 50 EUROPE STRAIGHT PRESS-FIT	
G	ELX-I-24020	AAB	2016-06-06	0°±2'		.00±0.1			
						.000±0.1			
		dr	PESSON	1995-10-03		Amphenol FCI		dwg no sheet 1 of 1 size	
		engr	MITHUN PAUL	2016-06-06				C01-8646-0373 A3	
		chr	ATHUL A.B	2016-06-06					
		appd	BIJU K PAUL	2016-06-06					
sheet index	revision	G						type Product Customer Drawing	
	sheet	1							

Amphenol FCI

© 2016 AFCE