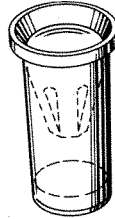


# MICRO JACKS

Designers' Choice



- Precision engineered, "closed entry" contacts
- Space saving design for high density packaging
- Micro jacks are available for mating with .015 to .082 diameter pins and leads
- Beryllium Copper multi-spring contact maintains retention after multiple insertions
- Ideal for mounting transistors, resistors, diodes, ICs and similar miniature components
- Available for press-fit, swage or solder mounting
- Sizes for .032, .062, .093 and .125 thick PC boards
- Custom micro jacks manufactured to your specifications
- Other platings available upon request



## SPECIFICATIONS

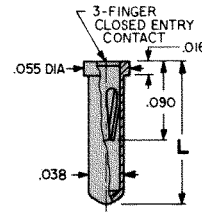
**Body:** Brass, ASTM-B16

**Spring:** Beryllium Copper (QQ-C-533)

**Plating: Gold:** .000010 per MIL-G-45204, Type II

**Tin:** .000200 to .000300 per MIL-T-10727, Type 1

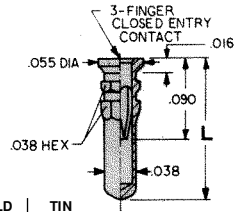
## For .015 - .021 Pin - SOLDER MOUNT



GOLD PLATED CAT. NO.	TIN PLATED CAT. NO.	"L" Lgth
1411-1	1431-1	.140
1411-2	1431-2	.170

Mounting Hole .040 Dia.

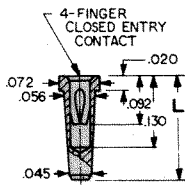
## For .015 - .021 Pin - PRESS-FIT



GOLD PLATED CAT. NO.	TIN PLATED "L" CAT. NO.	Lgth
1412-1	1432-1	.140
1412-2	1432-2	.170
1412-3	1432-3	.282

Mounting Hole .040 Dia.

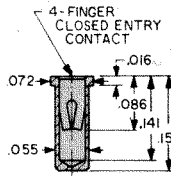
## For .015 - .025 Pin - TAPER-FIT



GOLD PLATED CAT. NO.	TIN PLATED "L" CAT. NO.	Lgth
1415-1	1435-1	.160
1415-2	1435-2	.190

Mounting Hole .055 Dia.

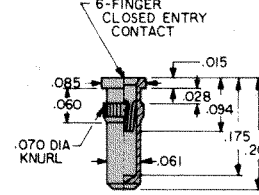
## For .015 - .025 Pin - SOLDER MOUNT



CAT. NO. 1413 - Gold Plate  
CAT. NO. 1433 - Tin Plate

Mounting Hole .057 Dia.

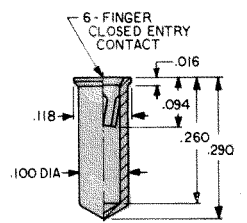
## For .022 - .034 Pin - PRESS-FIT



CAT. NO. 1416 - Gold Plate  
CAT. NO. 1436 - Tin Plate

Mounting Hole .067 Dia.

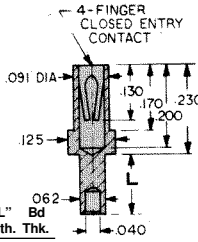
## For .040 - .050 Pin - SOLDER MOUNT



CAT. NO. 1418 - Gold Plate  
CAT. NO. 1438 - Tin Plate

Mounting Hole .102 Dia.

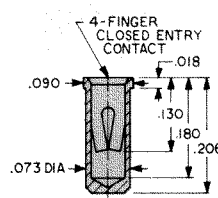
## For .032 - .046 Pin - SWAGE MOUNT



GOLD PLATED CAT. NO.	TIN PLATED "L" Bd CAT. NO.	Lgth	Thk.
1419-1	1439-1	.062	.032
1419-2	1439-2	.094	.062
1419-3	1439-3	.125	.093
1419-4	1439-4	.156	.125

Mounting Hole .067 Dia.

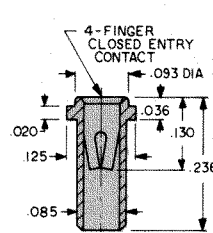
## For .032 - .046 Pin - SOLDER MOUNT



CAT. NO. 1417 - Gold Plate  
CAT. NO. 1437 - Tin Plate

Mounting Hole .076 Dia.

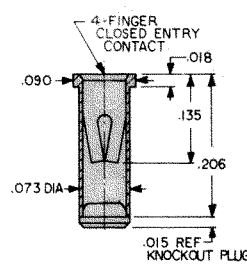
## For .032 - .046 Pin - SOLDER MOUNT



CAT. NO. 1414 - Gold Plate  
CAT. NO. 1434 - Tin Plate

Mounting Hole .089 Dia.

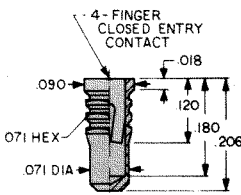
## For .032 - .046 Pin - SOLDER MOUNT



CAT. NO. 1441 - Gold Plate  
CAT. NO. 1444 - Tin Plate

Mounting Hole .076 Dia.

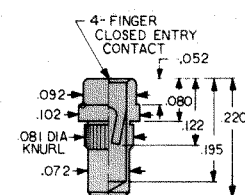
## For .032 - .046 Pin - PRESS-FIT



CAT. NO. 1442 - Gold Plate  
CAT. NO. 1445 - Tin Plate

Mounting Hole .076 Dia.

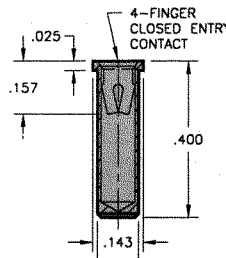
## For .032 - .046 Pin - PRESS-FIT



CAT. NO. 1443 - Gold Plate  
CAT. NO. 1446 - Tin Plate

Mounting Hole .078 Dia.

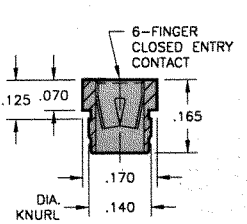
## For .065 - .082 Pin - SOLDER MOUNT



CAT. NO. 1641A - Gold Plate  
CAT. NO. 1641B - Tin Plate

Mounting Hole .120 Dia.

## For .084 - .102 Pin - PRESS-FIT

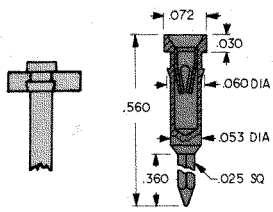


CAT. NO. 1640A - Gold Plate  
CAT. NO. 1640B - Tin Plate

Mounting Hole .138 Dia.

## IC SOCKET CONTACTS - For .015 - .025 Leads

Retains .016 to .022 Dia. Leads.  
4 Finger Contacts.

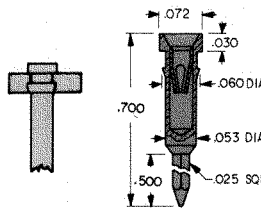


CAT. NO. 3501 - Gold Plate  
CAT. NO. 3505 - Tin Plate

PRESS-FIT Mounting Hole .055 Dia.

## IC SOCKET CONTACTS - For .015 - .025 Leads

Retains .016 to .022 Dia. Leads.  
4 Finger Contacts.

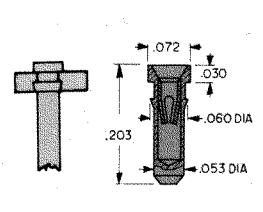


CAT. NO. 3502 - Gold Plate  
CAT. NO. 3506 - Tin Plate

PRESS-FIT Mounting Hole .055 Dia.

## IC SOCKET CONTACTS - For .015 - .025 Leads

Retains .016 to .022 Dia. Leads.  
4 Finger Contacts.



CAT. NO. 3503 - Gold Plate  
CAT. NO. 3507 - Tin Plate

PRESS-FIT Mounting Hole .055 Dia.