



MSM-332 Flatpack Magnet



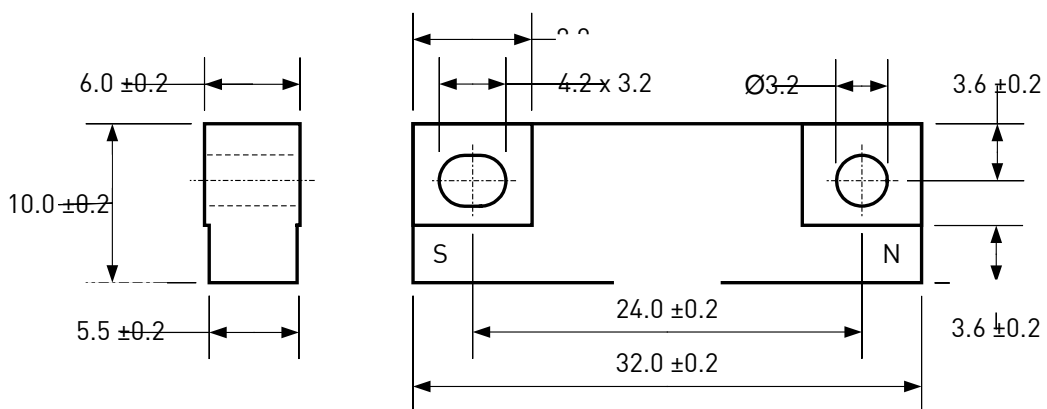
Data

| | |
|------------------|---------------------|
| Housing Material | ABS, black |
| Potting Material | Epoxy, black |
| Orientation | over housing length |

| | | |
|--------------------------------|-------------------------|-----------|
| Magnetic Material | N30H | |
| Remanence Br | mT | 1105 |
| Coercivity HcB | kA/m | 836 |
| Coercivity HcJ | kA/m | 1274 |
| Energy Product (BH) max. | kJ/m ³ | 235 |
| Magnetic Moment M | x10 ⁻⁵ Vs cm | 4.1 |
| Operating Temperature | °C | -20 to 85 |
| Temperature Coefficient Tk(Br) | %/°C | -0.11 |

Nominal values unless otherwise specified

Dimensions in mm



Customized types, other magnet materials and high temperature grades available.