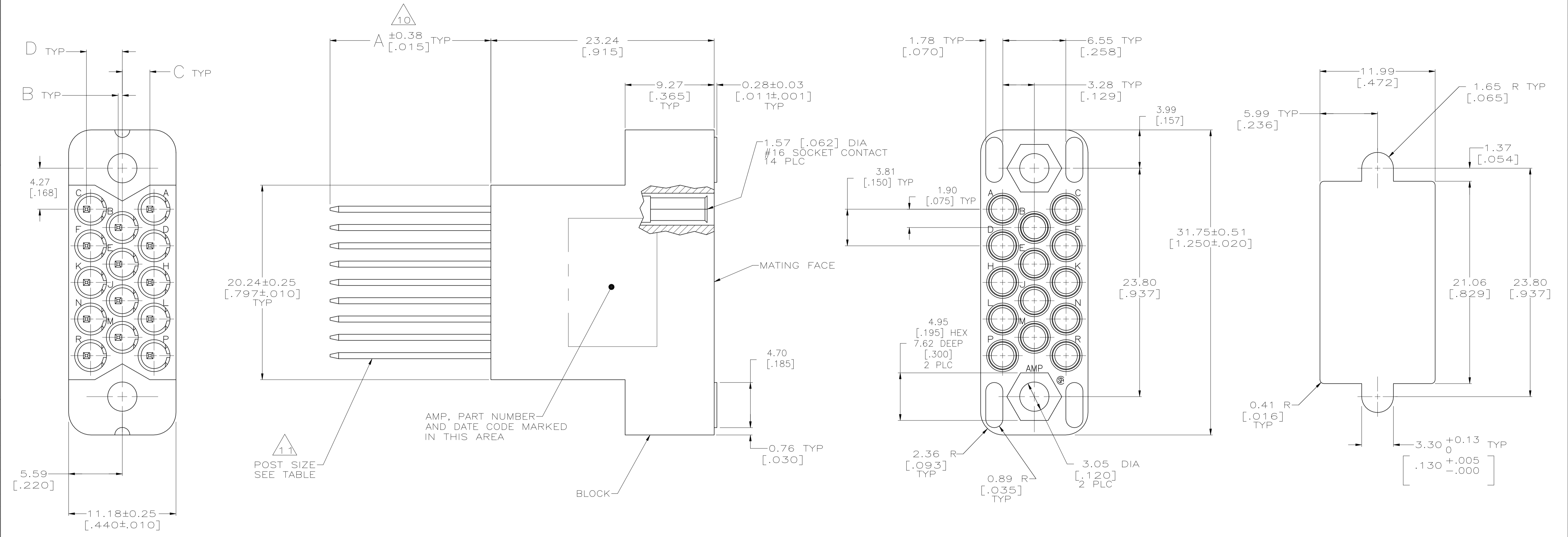


REVISIONS					
P	LTR	DESCRIPTION	DATE	DRN	APVD
R1		REVISED PER ECN-22-171574	26AUG2022	RK	MZ



- △ PHENOLIC, BLACK.
- △ BODY: BRASS, MIL-C-50; POST: BRASS, ASTM B-134; SPRING: STAINLESS STEEL, QQ-5-766.
- △ BODY AND POST: BRASS, ASTM B-36; SPRING: STAINLESS STEEL, QQ-5-766.
- △ GOLD PER MIL-G-45204, NICKEL PER QQ-N-290, TIN-LEAD PER MIL-T-10727 AND COPPER PER MIL-C-14550.
- △ 1.27um [.000050] MIN TIN-LEAD OVER 1.27um [.000050] MIN NICKEL.
- △ 0.76um [.000030] MIN GOLD OVER 1.27um [.000050] MIN NICKEL.
- △ 0.76um [.000030] MIN GOLD ON MATING END FOR A LENGTH OF 5.08 [.200] MIN, GOLD FLASH ON THE REMAINDER OVER 1.27um [.000050] MIN NICKEL.
- △ 2.54um [.000100] MIN TIN-LEAD OVER 2.54um [.000100] MIN COPPER.
- △ 2.54um [.000100] MIN TIN-LEAD OVER 1.27um [.000050] MIN NICKEL.
- △ 10 WHEN CONTACT IS FULLY SEATED FORWARD.
- △ 11 CONTACTS ARE SEMI-AUTOMATICALLY WIRABLE.
- 12. MAX WIRE TO BE USED WITH THIS CONNECTOR IS NO. 24 AWG.
- △ 13 2.54um [.000100] MIN TIN OVER 1.27um [.000050] MIN NICKEL.

	3.73 [.147]	2.87 [.113]	0.43 [.017]	6.63 [.261]	△ 13	△ 7	△ 2	0.64 X 0.64 [.025 X .025]	1	3-205508-4
OBSOLETE	3.73 [.147]	2.87 [.113]	0.43 [.017]	6.63 [.261]	△ 8	△ 7	△ 2	0.64 X 0.64 [.025 X .025]	1	3-205508-1
	3.30 [.130]	3.30 [.130]	0 [.000]	20.57 [.810]	△ 9	△ 6	△ 3	0.79 X 1.57 [.031 X .062]	3	205508-8
OBSOLETE	3.73 [.147]	2.87 [.113]	0.43 [.017]	16.74 [.659]	△ 8	△ 5	△ 2	0.64 X 0.64 [.025 X .025]	3	205508-3
	D	C	B	A	FINISH CONTACT POST	FINISH CONTACT BODY	MATERIAL CONTACT	CONTACT POST SIZE	NO OF TERM	PART NUMBER

THIS DRAWING IS A CONTROLLED DOCUMENT.

DIMENSIONS: mm [INCHES]	TOLERANCES UNLESS OTHERWISE SPECIFIED:	DWG: D.GELTZ 04/20/94	CHK: R.STONE 04/25/94	APVD: -	NAME: -
0 PLC ± -	1 PLC ± -	2 PLC ± 0.13 [.005]	3 PLC ± -	4 PLC ± -	ANGLES ± -
MATERIAL BLOCK: △	FINISH CONTACT: SEE TABLE	WEIGHT: -	SIZE: A1	CAGE CODE: 00779	DRAWING NO: 205508
CONTACT: SEE TABLE		CUSTOMER DRAWING	SCALE: 5:1	SHEET: 1 of 1	REV: R1

**STE** TE Connectivity

SOCKET ASSEMBLY, 14 POSITION, AUTOWIRABLE, M SERIES