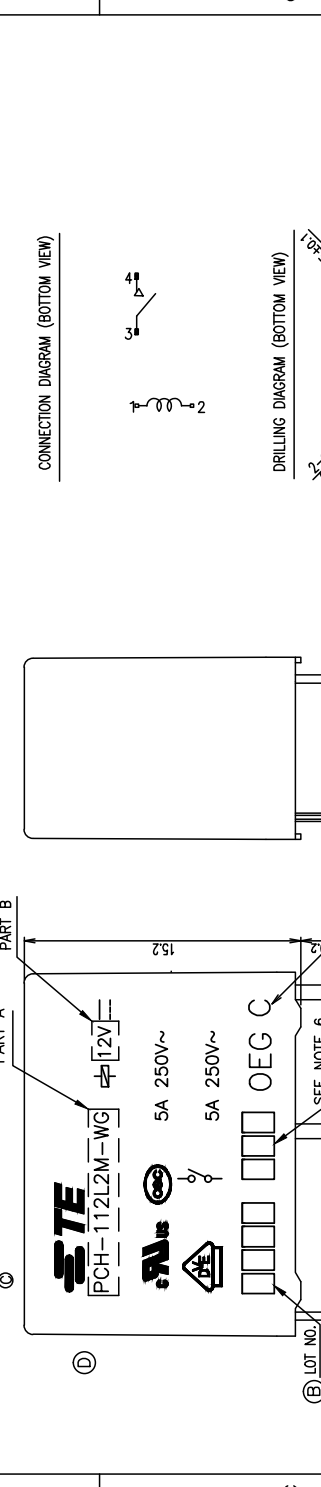


REV	DATE	BY	CHK	APPD	DESCRIPTION
C	28 JUN 2009	YS.H.H.Y			ABSOLUTE P/N ECC-09-014329
D	09 NOV 2012	YS.H			AWAY FROM ORIGINAL P/N 112L2M-1-201205 & NEW QTY SYMBOL 112L2M-1-201205
D1	19 JUN 2014	QL			ADD A NEW P/N ECC-14-00025



<b>TE</b> PCH-112L2M-WG 5A 250V~ 5A 250V~ OEG C		MADE IN CHINA SEE NOTE 6 3.8±0.2 0.8 0.8 0.45	
DIMENSIONS: mm TOLEANCES UNLESS OTHERWISE SPECIFIED: 0 PL ± 1 PL ± 2 PL ± 3 PL ± 4 PL ± ANGLES ± FINISH ±		DIMENSIONS: mm 10.16±0.2 7.62±0.2 0.2 1.1 7.6±0.2 10	
THIS DRAWING IS A CONTROLLED DOCUMENT. DIM: KJ.DU CHK: N.FUNOGAMB APPD: C.H.HSU PRODUCT SPEC: APPLICATION SPEC: WEIGHT: MATERIAL:		TE Connectivity PCH-12M(H)-WG CUSTOMER DRAWING DRAWING NO: A300779 SCALE: 5:1 SHEET: 1 of 2 REV: D1	

REVISED FOR PUBLICATION	DATE	BY	CHK
ALL RIGHTS RESERVED.			

LOC	DIST	REV	DATE	BY	CHK
HB		1			

TE PART NO	TE TYPE NAME	PACKAGE SPEC	TYPE	P/N STATUS
1-1721768-6	PCH-105L2M-NG	107-20000(000)	P	ACTIVE

1-1721768-5	PCH-142L2M-NG	107-20000(000)	O	ACTIVE
1-1721768-4	PCH-148L2M-NG	107-20000(000)	N	ORSLTTE
1-1721768-3	PCH-124L2M-NG	107-20000(000)	M	ORSLTTE
1-1721768-2	PCH-103L2M-NG	107-20000(000)	L	ORSLTTE
1-1721768-1	PCH-109L2M-NG	107-20000(000)	K	ORSLTTE
1-1721768-0	PCH-108L2M-NG	107-20000(000)	J	ORSLTTE
1721768-9	PCH-105L2M-NG	107-20000(000)	I	ORSLTTE
1721768-8	PCH-103L2M-NG	107-20000(000)	H	ORSLTTE
1721768-7	PCH-148L2M-NG	107-20000(000)	G	ACTIVE
1721768-6	PCH-124L2M-NG	107-20000(000)	F	ACTIVE
1721768-5	PCH-112L2M-NG	107-20000(000)	E	ACTIVE
1721768-4	PCH-106L2M-NG	107-20000(000)	D	ACTIVE
1721768-3	PCH-106L2M-NG	107-20000(000)	C	ACTIVE
1721768-2	PCH-105L2M-NG	107-20000(000)	B	ACTIVE
1721768-1	PCH-103L2M-NG	107-20000(000)	A	ORSLTTE

CLASS F (A)	UV RESIN	UV SEAL	ITEM
	EPXY RESIN	SEAL	16
	MW79(C)	MAGNETIC WIRE	15
	CP WIRE	COIL TERMINAL	14
		STATIONARY CONTACT	13
		MOVABLE CONTACT	12
		HANGE SPRING	11
		NO TERMINAL	10
		MOVABLE SPRING	9
		MONABLE SPRING	8
		PCARD	7
		LCP	6
		PA NYLON	5
		PET	4
		BASE	3
		CORE	2
		ARMATURE	1

INCOMBUSTIBILITY	TREATMENT	MATERIAL	DESCRIPTION	ITEM

UV RESIN	UV SEAL	ITEM
EPXY RESIN	SEAL	16
MW79(C)	MAGNETIC WIRE	15
CP WIRE	COIL TERMINAL	14
	STATIONARY CONTACT	13
	MOVABLE CONTACT	12
	HANGE SPRING	11
	NO TERMINAL	10
	MOVABLE SPRING	9
	MONABLE SPRING	8
	PCARD	7
	LCP	6
	PA NYLON	5
	PET	4
	BASE	3
	CORE	2
	ARMATURE	1

INCOMBUSTIBILITY	TREATMENT	MATERIAL	DESCRIPTION	ITEM

UV RESIN	UV SEAL	ITEM
EPXY RESIN	SEAL	16
MW79(C)	MAGNETIC WIRE	15
CP WIRE	COIL TERMINAL	14
	STATIONARY CONTACT	13
	MOVABLE CONTACT	12
	HANGE SPRING	11
	NO TERMINAL	10
	MOVABLE SPRING	9
	MONABLE SPRING	8
	PCARD	7
	LCP	6
	PA NYLON	5
	PET	4
	BASE	3
	CORE	2
	ARMATURE	1

INCOMBUSTIBILITY	TREATMENT	MATERIAL	DESCRIPTION	ITEM

UV RESIN	UV SEAL	ITEM
EPXY RESIN	SEAL	16
MW79(C)	MAGNETIC WIRE	15
CP WIRE	COIL TERMINAL	14
	STATIONARY CONTACT	13
	MOVABLE CONTACT	12
	HANGE SPRING	11
	NO TERMINAL	10
	MOVABLE SPRING	9
	MONABLE SPRING	8
	PCARD	7
	LCP	6
	PA NYLON	5
	PET	4
	BASE	3
	CORE	2
	ARMATURE	1

INCOMBUSTIBILITY	TREATMENT	MATERIAL	DESCRIPTION	ITEM

UV RESIN	UV SEAL	ITEM
EPXY RESIN	SEAL	16
MW79(C)	MAGNETIC WIRE	15
CP WIRE	COIL TERMINAL	14
	STATIONARY CONTACT	13
	MOVABLE CONTACT	12
	HANGE SPRING	11
	NO TERMINAL	10
	MOVABLE SPRING	9
	MONABLE SPRING	8
	PCARD	7
	LCP	6
	PA NYLON	5
	PET	4
	BASE	3
	CORE	2
	ARMATURE	1

INCOMBUSTIBILITY	TREATMENT	MATERIAL	DESCRIPTION	ITEM

UV RESIN	UV SEAL	ITEM
EPXY RESIN	SEAL	16
MW79(C)	MAGNETIC WIRE	15
CP WIRE	COIL TERMINAL	14
	STATIONARY CONTACT	13
	MOVABLE CONTACT	12
	HANGE SPRING	11
	NO TERMINAL	10
	MOVABLE SPRING	9
	MONABLE SPRING	8
	PCARD	7
	LCP	6
	PA NYLON	5
	PET	4
	BASE	3
	CORE	2
	ARMATURE	1

INCOMBUSTIBILITY	TREATMENT	MATERIAL	DESCRIPTION	ITEM

UV RESIN	UV SEAL	ITEM
EPXY RESIN	SEAL	16
MW79(C)	MAGNETIC WIRE	15
CP WIRE	COIL TERMINAL	14
	STATIONARY CONTACT	13
	MOVABLE CONTACT	12
	HANGE SPRING	11
	NO TERMINAL	10
	MOVABLE SPRING	9
	MONABLE SPRING	8
	PCARD	7
	LCP	6
	PA NYLON	5
	PET	4
	BASE	3
	CORE	2
	ARMATURE	1

INCOMBUSTIBILITY	TREATMENT	MATERIAL	DESCRIPTION	ITEM

UV RESIN	UV SEAL	ITEM
EPXY RESIN	SEAL	16
MW79(C)	MAGNETIC WIRE	15
CP WIRE	COIL TERMINAL	14
	STATIONARY CONTACT	13
	MOVABLE CONTACT	12
	HANGE SPRING	11
	NO TERMINAL	10
	MOVABLE SPRING	9
	MONABLE SPRING	8
	PCARD	7
	LCP	6
	PA NYLON	5
	PET	4
	BASE	3
	CORE	2
	ARMATURE	1

INCOMBUSTIBILITY	TREATMENT	MATERIAL	DESCRIPTION	ITEM

UV RESIN	UV SEAL	ITEM
EPXY RESIN	SEAL	16
MW79(C)	MAGNETIC WIRE	15
CP WIRE	COIL TERMINAL	14
	STATIONARY CONTACT	13
	MOVABLE CONTACT	12
	HANGE SPRING	11
	NO TERMINAL	10
	MOVABLE SPRING	9
	MONABLE SPRING	8
	PCARD	7
	LCP	6
	PA NYLON	5
	PET	4
	BASE	3
	CORE	2
	ARMATURE	1

INCOMBUSTIBILITY	TREATMENT	MATERIAL	DESCRIPTION	ITEM

UV RESIN	UV SEAL	ITEM
EPXY RESIN	SEAL	16
MW79(C)	MAGNETIC WIRE	15
CP WIRE	COIL TERMINAL	14
	STATIONARY CONTACT	13
	MOVABLE CONTACT	12
	HANGE SPRING	11
	NO TERMINAL	10
	MOVABLE SPRING	9
	MONABLE SPRING	8
	PCARD	7
	LCP	6
	PA NYLON	5
	PET	4
	BASE	3
	CORE	2
	ARMATURE	1

INCOMBUSTIBILITY	TREATMENT	MATERIAL	DESCRIPTION	ITEM

TE Connectivity

**TE**

PCH-L2M(H)-WG CUSTOMER DRAWING

SCALE 5:1 SHEET 2 of 2 REV D1

RESTRICTED TO

NOTES:

1. LAST SUFFIX NON - WASHABLE TYPE

2. LOT NO. SYSTEM AS FOLLOWING:

① ② ③ ④ ⑤ ⑥ ⑦ ⑧ ⑨ ⑩ ⑪ ⑫ ⑬ ⑭ ⑮ ⑯ ⑰ ⑱ ⑲ ⑳ ㉑ ㉒ ㉓ ㉔ ㉕ ㉖ ㉗ ㉘ ㉙ ㉚ ㉛ ㉜ ㉝ ㉞ ㉟ ㊱ ㊲ ㊳ ㊴ ㊵ ㊶ ㊷ ㊸ ㊹ ㊺

③ 6. ADD LOT NO. SYSTEM AS FOLLOWING;

I. DIGITS FOR DAY OF THE WEEK

1... MONDAY IN THIS WEEK;

2... TUESDAY IN THIS WEEK;

3... WEDNESDAY IN THIS WEEK;

4... THURSDAY IN THIS WEEK;

5... FRIDAY IN THIS WEEK;

6... SATURDAY IN THIS WEEK;

7... SUNDAY IN THIS WEEK

II. DIGITS FOR SHIFT OF THE DAY

1... DAY SHIFT IN THIS DAY;

2... NIGHT SHIFT IN THIS DAY;

III. ONE CHARACTER DISTINGUISH THE LINE IDENTITY, SUCH AS: A,B,...Z

③ 3. TERMINAL DIMENSION IS BEFORE SOLDER DIP;

③ 4. FOR THE TIN-PLATING OF THE PINS:

+0.1mm FOR WIDTH, THICKNESS AND DIAMETER.

+0.5mm FOR LENGTH.

③ 5. MARKING FROM INK TO LASER.

