

Device connector, front mounting - SL-7EPWN8AWA00 - 1615687

Please be informed that the data shown in this PDF Document is generated from our Online Catalog. Please find the complete data in the user's documentation. Our General Terms of Use for Downloads are valid (<http://phoenixcontact.com/download>)



Device connector, front mounting, straight, Screw locking, M58, Number of positions: 4+3+PE, Type of contact: Male connector, Crimp connection, Axial O-ring, 4x Ø 5,4, shielded: yes, Flange dimensions: 60 mm x 60 mm

Product Features

- Consistent EMC protection for reliable connection solutions in the industrial environment
- Crimping connection: vibration- and temperature-resistant assembly
- Reliable transmission of high electrical power



Key Commercial Data

| | |
|--------------------------------------|----------|
| Packing unit | 1 pc |
| Weight per Piece (excluding packing) | 320.0 g |
| Custom tariff number | 85366990 |
| Country of origin | Germany |

Technical data

General

| | |
|--|--|
| Note | Order information: Order crimp contacts 4 x Ø 1.6 mm, 4 x Ø 10 mm separately |
| Type of locking | Screw locking |
| Coding | N |
| Contact connection method | Crimp connection |
| Type of contacts | Male connector |
| Number of positions | 8 |
| Contact diameter of power contacts | 10 mm |
| Nominal current per power contact at 25°C | 150 A |
| Contact diameter of signal contacts | 1.6 mm |
| Nominal current per signal contact at 25°C | 12 A |
| Pg housing screw connection | none |

Device connector, front mounting - SL-7EPWN8AWA00 - 1615687

Technical data

General

| | |
|---------------|----------|
| Mounting type | 4x Ø 5,4 |
|---------------|----------|

Ambient conditions

| | |
|----------------------|-------------------|
| Ambient temperature | -40 °C ... 120 °C |
| Degree of protection | IP67 |

Material

| | |
|------------------|----------|
| Housing material | Aluminum |
|------------------|----------|

Specifications according to DIN EN 61984:2001

| | |
|--|--------|
| Installation height max. | 2000 m |
| Nominal / operating voltage of power contacts | 630 V |
| Rated surge voltage of power contacts | 6 kV |
| Overvoltage category of power contacts | III |
| Degree of pollution of power contacts | 3 |
| Nominal / operating voltage of signal contacts | 250 V |
| Rated surge voltage of signal contacts | 4 kV |
| Overvoltage category of signal contacts | III |
| Degree of pollution of signal contacts | 3 |

Classifications

eCl@ss

| | |
|------------|----------|
| eCl@ss 4.0 | 272607xx |
| eCl@ss 4.1 | 27260701 |
| eCl@ss 5.0 | 27143424 |
| eCl@ss 5.1 | 27143424 |
| eCl@ss 6.0 | 27143424 |
| eCl@ss 7.0 | 27440209 |
| eCl@ss 8.0 | 27440103 |
| eCl@ss 9.0 | 27440102 |

ETIM

| | |
|----------|----------|
| ETIM 3.0 | EC001121 |
| ETIM 4.0 | EC001121 |
| ETIM 5.0 | EC002061 |

UNSPSC

| | |
|-------------|----------|
| UNSPSC 6.01 | 43172015 |
|-------------|----------|

Device connector, front mounting - SL-7EPWN8AWA00 - 1615687

Classifications

UNSPSC

| | |
|---------------|----------|
| UNSPSC 7.0901 | 43201404 |
| UNSPSC 11 | 43172015 |
| UNSPSC 12.01 | 43201404 |
| UNSPSC 13.2 | 43201404 |

Approvals

Approvals

Approvals

EAC

Ex Approvals

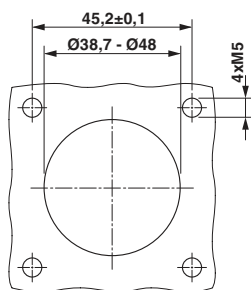
Approvals submitted

Approval details

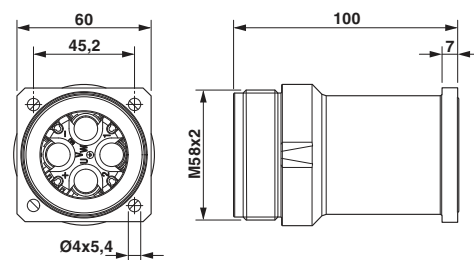
| |
|-----|
| EAC |
|-----|

Drawings

Drilling diagram



Dimensional drawing



Installation dimensions

Dimensional drawing