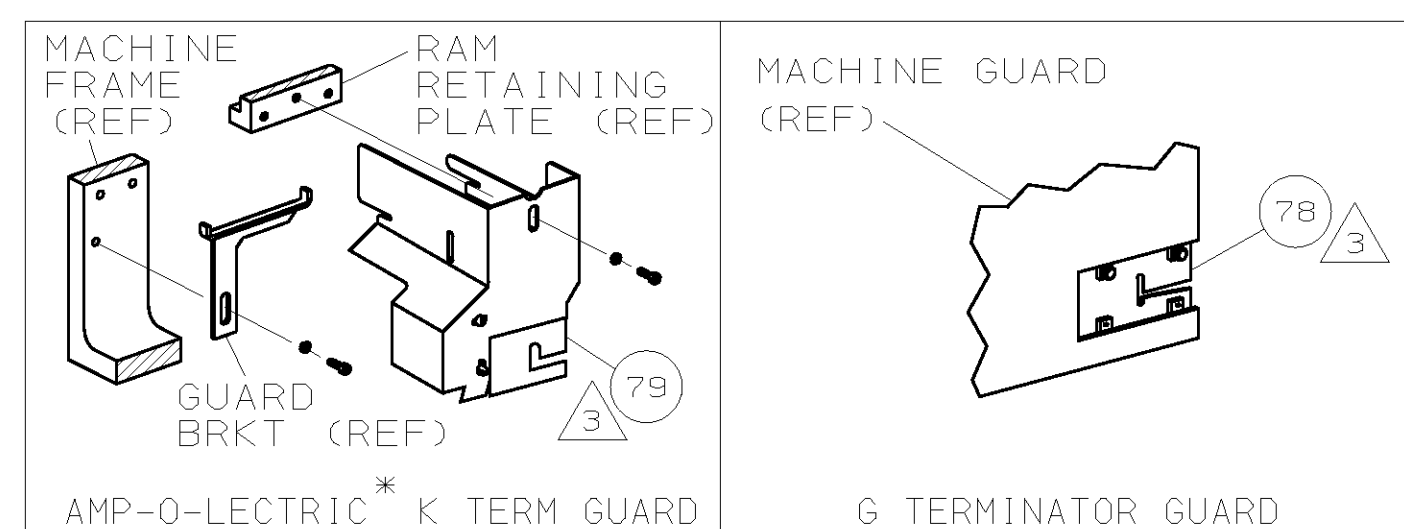
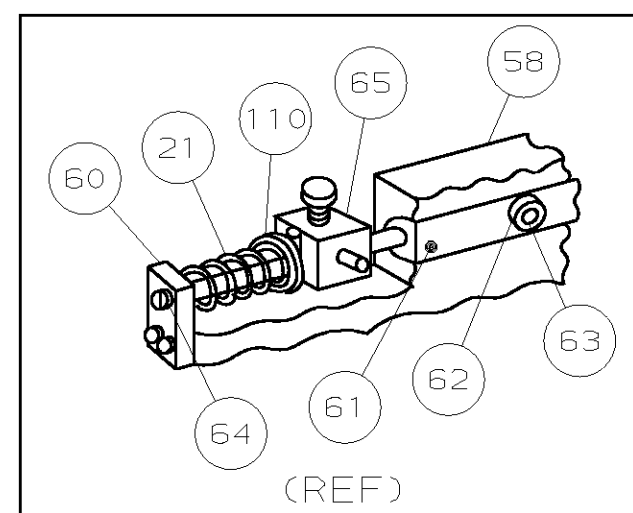


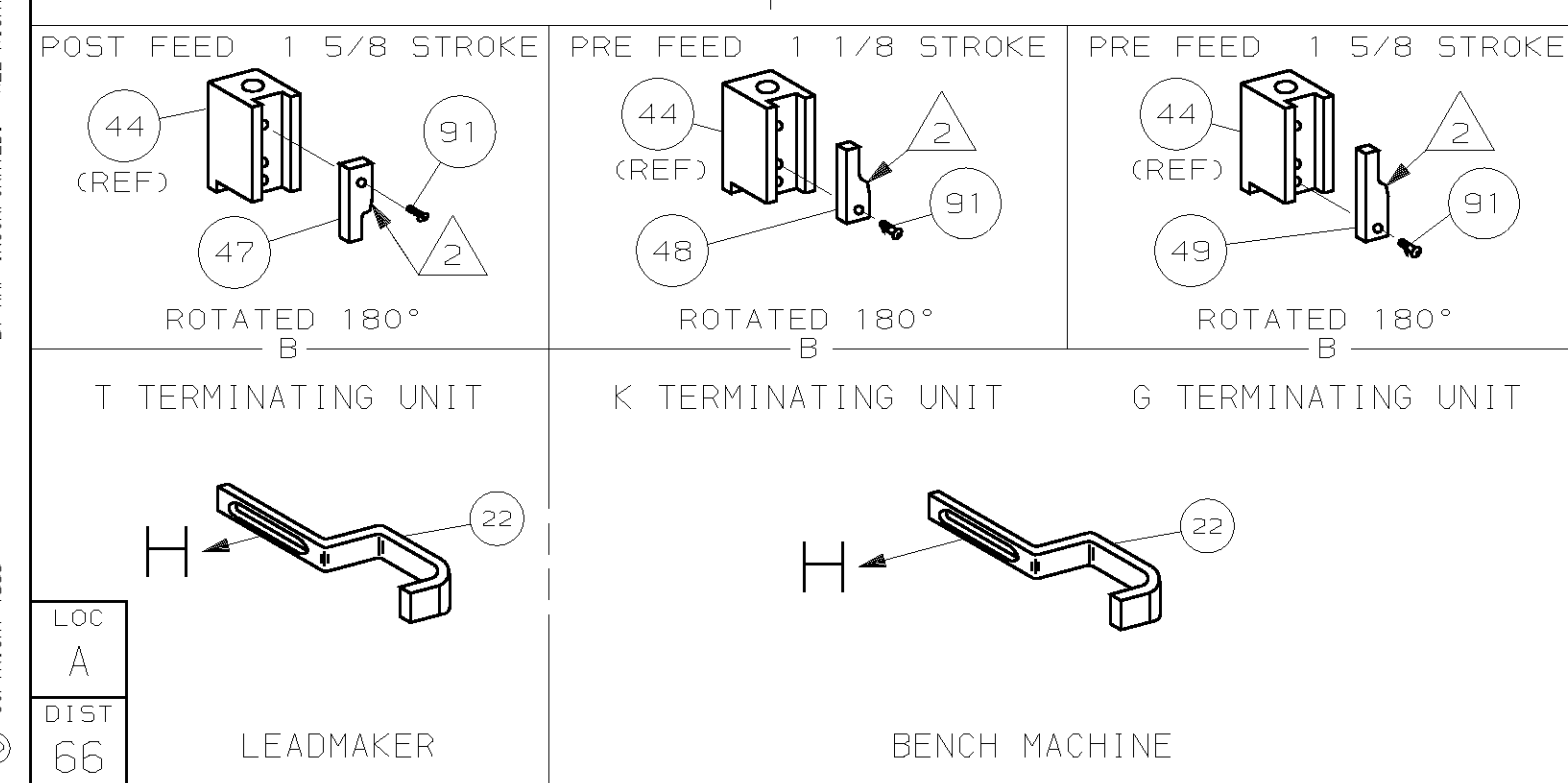
PART NUMBER	REV	FIRST USED
680085-1	B	854400-1
680085-2	B	565435-5
680085-3	B	354500-1



TERMINAL NAME:	
AMPLIVAR SPLICE (MINIATURE)	62341
TERM APPL SPEC	114-2016

CRIMPING DATA			
PAD LTR	CRIMP HEIGHT	WIRE SIZE	
A	.048 ±.002	1800-2000 CMA	
B	.044 ±.002	1400-1800 CMA	
C	.040 ±.002	900-1300 CMA	
D	.036 ±.002	400-800	
CRIMP	SIZE	TYPE	RANGE
WIRE	.070	F	400-2000 CMA
INSUL	-	-	-
FEED	APPL INST	SET UP GAGE	LAYOUT
.330	408-8040	458637-1	L1565
WIRE STRIP LENGTH			
-			

QTY	RECD	PER	ASSY	PARTS LIST	DESCRIPTION	ITEM NO		
-1				LEADMAKER	MECH POST FEED			
-2				BENCH MODEL K	MECH PRE FEED			
-3				BENCH MODEL G	MECH PRE FEED			
1	1	1	-	B	22594-8	NUT, HEX (1/2-20)	70	
1	1	1	-	B	240628-1	PLATE, ADJUSTMENT	69	
1	1	1	-	B	240626-1	SHAFT, PIVOT	68	
1	1	1	-	B	240633-1	BUSHING	67	
1	1	1	-	A	455680-1	LEVER, INTERMEDIATE	66	
1	1	1	-	B	240629-1	BLOCK, PIVOT	65	
1	1	1	-	A	240632-2	SCREW, ADJ FEED ROD	64	
1	1	1	-	B	240659-3	PIN, CAM ROLLER	63	
1	1	1	-	B	240658-1	ROLLER, CAM	62	
1	1	1	-	B	454398-2	ROD, FEED	61	
1	1	1	-	A	454178-1	GUIDE, FEED ROD	60	
1	1	1	-	C	454220-1	CAP, RAM	59	
1	1	1	-	D	454485-1	HOUSING	58	
							57	
1	1	1	-	B	1-694433-0	PAWL, FEED	56	
1	1	1	-	B	240624-1	PIN, FEED FINGER	55	
1	1	1	-	B	691499-1	SPRING, FEED FINGER	54	
1	1	1	-	A	690541-1	HOLDER, FEED FINGER	53	
1	1	1	-	B	455679-1	LEVER, TERMINAL FEED ARM	52	
							51	
							50	
1	-	-	-	B	690602-6	CAM, PRE-FEED 1 5/8 ST	49	
-	1	-	-	B	690602-5	CAM, PRE-FEED 1 1/8 ST	48	
-	-	1	-	B	690501-4	CAM, POST-FEED 1 5/8 ST	47	
							46	
1	1	1	-	A	690191-1	PLUG, NYLON	45	
1	1	1	-	C	455673-4	RAM	44	
1	1	1	-	A	690125-1	WASHER, LAMINATED	43	
1	1	1	-	A	690124-1	WASHER, RAM	42	
1	1	1	-	A	7-21002-9	BOLT, CRIMPER (5/16x1.00)	41	
							40	
							39	
1	1	1	-	A	690223-2	SPACER, INSULATION DISC	38	
1	1	1	-	D	354777-1	WIRE DISC, PLASTIC	37	
1	1	1	-	A	22480-5	WASHER, SPRING	36	
1	1	1	-	B	690212-1	POST, RAM	35	
							34	
1	1	1	-	D	455675-8	PLATE, BASE	33	
1	1	1	-	A	690432-3	SCREW, ADJUSTMENT	32	
							31	
1	1	1	-	B	816182-1	BLOCK, STRIP GUIDE ADJ	30	
1	1	1	-	C	844048-5	PLATE, STRIP GUIDE	29	
							28	
2	2	2	-	A	1-22284-0	SPRING, DRAG	27	
1	1	1	-	B	240793-1	LEVER, DRAG RELEASE	26	
1	1	1	-	B	240792-1	DRAG, TERMINAL	25	
1	1	1	-	D	690438-1	GUIDE, STRIP (REAR)	24	
1	1	1	-	A	189124-1	GUIDE, STRIP (FRONT)	23	
1	1	1	-	B	456468-5	STRIPPER	22	
1	1	1	-	A	4-22284-9	SPRING, FEED RETURN	21	
							20	
							19	
							18	
1	1	1	-	A	691668-1	GUARD, CHIP (REAR)	17	
							16	
							15	
1	1	1	-	B	690462-1	HOLDER, SHEAR (REAR)	14	
1	1	1	-	C	690463-1	SHEAR, FLOAT (REAR)	13	
1	1	1	-	A	5-22280-0	SPRING, SHEAR	12	
1	1	1	-	B	690461-1	STOP, SHEAR	11	
							10	
							9	
1	1	1	-	C	6-683403-8	ANVIL	8	
							7	
1	1	1	-	A	468888-1	DEPRESSOR, SHEAR (REAR)	6	
							5	
							4	
							3	
1	1	1	-	C	189125-1	SPACER, SPECIAL	2	
1	1	1	-	C	462808-2	CRIMPER, WIRE	1	
-3	-2	-1	-	U/M	DWG SIZE	PART NO	DESCRIPTION	ITEM NO
								REVISION OF EACH ASSY NO (WHEN BLANK, USE DWG REVISION)
QTY RECD PER ASSY								PARTS LIST



- 1 RECOMMENDED SPARE PARTS.
- 2 GREASE LIGHTLY.
- 3 GUARD MUST BE IN PLACE WHEN OPERATING APPLICATOR IN A BENCH MACHINE.
- 4 LUBRICATE DAILY USING NO. 20 MACHINE OIL.