

REFERENCE SPECIFICATIONS

- MIL-DTL-24308
- IEC 352-5
- IEC-512 (TESTS PROCEDURE)

PHYSICAL CHARACTERISTICS

- INSULATOR MATERIAL:
- PBT COLOR BLACK-RAL 7001/STANDARD MATERIAL
- CONTACT MATERIAL: BRASS
- ACCESSORIES : BRASS

ELECTRICAL CHARACTERISTICS

- NOMINAL CURRENT: 2.5A
- CONTACT RESISTANCE : <10mΩ
- VOLTAGE PROOF : >750 V.r.m.s.
- RATED VOLTAGE : 300 V.r.m.s.
- INSULATION RESISTANCE: >5000MΩ
- CREEPAGE AND CLEARANCE DISTANCE: >1mm

MECHANICAL CHARACTERISTICS

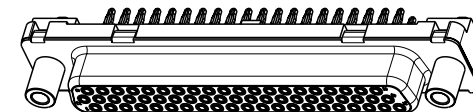
- RETENTION AGAINST TORQUE:
 - Threaded insert: 0.7 N.m minimum
 - Female screw lock: 0.5 N.m minimum
 - Insert L: threaded M3
 - Insert X: threaded UNC 4.40
 - Female screw V threaded UNC 4.40
- INSERTION AND WITH DRAWAL FORCE: <n x 3.40 N (n number of cts)
- GAUGE RETENTION FORCE : >0.20 N
- with gauge Ø0.99±0.005 / SURFACE ROUGHNESS:
 - Ra=0.10µ mini- 0.25µ maxi
- CONTACT RETENTION IN INSULATOR : mini I6N
- VIBRATIONS: 10-500Hz / 1.5 mm - 10g / 3 HRX/axis according with MIL std 1344 meth.2005 cond 2 interruption < 1µs

PERFORMANCE LEVELS

- INDUSTRIAL ATMOSPHERE TEST: 4 GASES available for contacts active area only
- BATELLE TEST :
 - Duration : 10 days
 - Mixed Gases: H2S=10 PPB±5 vol/vol +N2O=200ppb±50 vol/vol + CL2 =10ppb±3vol/vol + S2O=100ppb±30vol/vol

CD62S9 | C6GV00

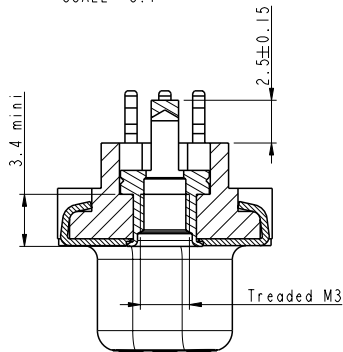
- Series
- Layout of contacts
- Contact definition:
 - S : socket
- Foot print 6.00
- Press-fit termination (mached contact)
- Plating definition :
 - 4 Standard class > 200 mating/unmating
 - 6 High performance class > 500 mating/unmating
- Front accessories definition : (see sheet 2)
 - GL : Harpoons + insert M3
 - GX : Harpoons + insert UNC 4-40
 - GV : Harpoons + female screw UNC 4-40
- Non RoHS compatible



www.fciconnect.com		surface ISO 1302 ✓	tolerance std ISO 406 ISO 1101	projection mm
		TOLERANCES UNLESS OTHERWISE SPECIFIED		
Dr P. CRON	2006/10/11	ANGULAR	0.X ±0.3	size A2 Scale 2:1
Eng M. PESSON	2006/10/11	LINEAR	0.xx ±0.1	ECN LS06-0160
Chr P. LEGARE	2006/10/11	0° ±2°	0.xxx ±0.05	Product family D-SUB Spec ref
Appr P. LEGARE	2006/10/11	Product family		D-SUB Spec ref
FCJ		SOCKET COMPACT D 62		Rev. C
		WHITH STRAIGHT PRESS-FIT		cat no C01-8646-0689
		catalog no		sheet 1 of 3

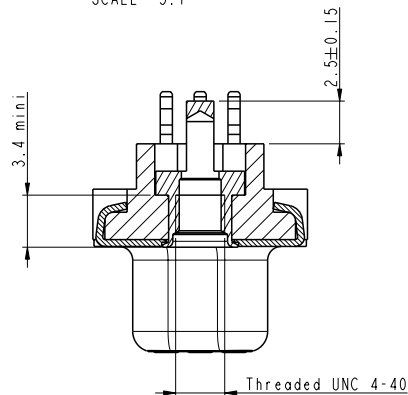
Copyright FCJ

SECTION B-B
SCALE 5:1



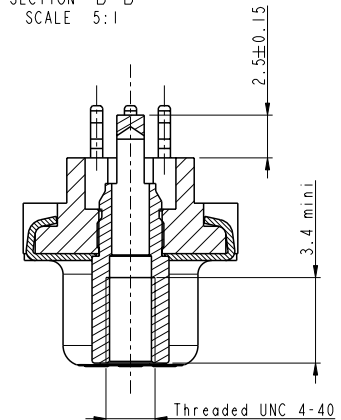
FRONT ACCESSORIES GL Insert M3

SECTION B-B
SCALE 5:1



FRONT ACCESSORIES GX Insert UNC 4-40

SECTION B-B
SCALE 5:1



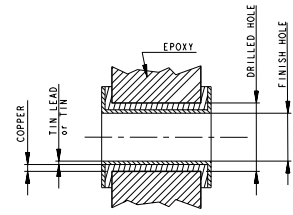
FRONT ACCESSORIES GV Female screw UNC 4-40

Tin lead version

PART NUMBER	FRONT ACCESSORIES	PCB ACCESSORIES
CD62S91C4GL00	INSERT M3	HAPOONS PCB to 1.6mm at 3.2mm
CD62S91C4GX00	INSERT UNC 4-40	HAPOONS PCB to 1.6mm at 3.2mm
CD62S91C4GV00	FEMALE SCREW UNC 4-40	HAPOONS PCB to 1.6mm at 3.2mm
CD62S91C6GL00	INSERT M3	HAPOONS PCB to 1.6mm at 3.2mm
CD62S91C6GX00	INSERT UNC 4-40	HAPOONS PCB to 1.6mm at 3.2mm
CD62S91C6GV00	FEMALE SCREW UNC 4-40	HAPOONS PCB to 1.6mm at 3.2mm

www.fciconnect.com		surface ISO 1302 ✓	tolerance std ISO 406 ISO 1101	projection mm
		TOLERANCES UNLESS OTHERWISE SPECIFIED		
Dr P. CRON	2006/10/11	ANGULAR	0.X ±0.3	size A2 Scale 1:1
Eng M. PESSON	2006/10/11	LINEAR	0.XX ±0.1	ECN LS06-0160
Chr P. LEGARE	2006/10/11	0° ±2°	0.XXX ±0.05	Product family D-SUB Spec ref
Appr P. LEGARE	2006/10/11	Product family D-SUB		Spec ref
		SOCKET COMPACT D 62 WITH STRAIGHT PRESS-FIT		Rev. C C01-8646-0689 sheet 2 of 3

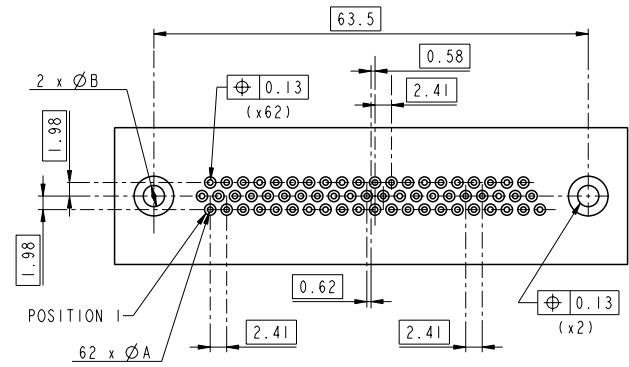
METALLIZED HOLE DIMENSION		HOLE PRESS-FIT CONTACT SnPb	HOLE PRESS-FIT CONTACT Sn	HOLE PRESS-FIT HARPOON SnPb	HOLE PRESS-FIT HARPOON Sn	HOLE PRESS-FIT CONTACT Cooper OSP	HOLE PRESS-FIT HARPOON Cooper OSP
P.C.B. HOLE DEFINITION (NOTE 1 et 2)	DRILL DIAMETER	∅1.15 REF (NOTE-3)	∅1.15 REF (NOTE-3)	∅3.22 REF (NOTE-3)	∅3.22 REF (NOTE-3)	∅1.15 REF (NOTE-3)	∅3.22 REF (NOTE-3)
	DRILLED HOLE	∅1.12 - ∅1.18	∅1.12 - ∅1.18	∅3.19 - ∅3.25	∅3.19 - ∅3.25	∅1.12 - ∅1.18	∅3.19 - ∅3.25
	COPPER PLATING	25µ mini - 50µ maxi	25µ mini - 50µ maxi	25µ mini - 50µ maxi	25µ mini - 50µ maxi	25µ mini - 50µ maxi	25µ mini - 50µ maxi
	TIN LEAD PLATING	5µ mini - 15µ maxi		5µ mini - 15µ maxi			
	PUR TIN PLATED		0.8µ mini - 1.2µ maxi		0.8µ mini - 1.2µ maxi		
	OSP PLATING (cooper)					0.2µ mini - 0.5µ maxi	0.2µ mini - 0.5µ maxi
	FINISH HOLE (note 4)	∅0.94 - ∅1.09	∅1.00 - ∅1.09	∅3.02 - ∅3.20	∅3.08 - ∅3.20	∅1.01 - ∅1.09	∅3.09 - ∅3.20



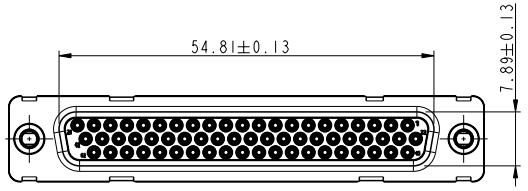
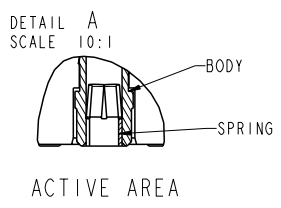
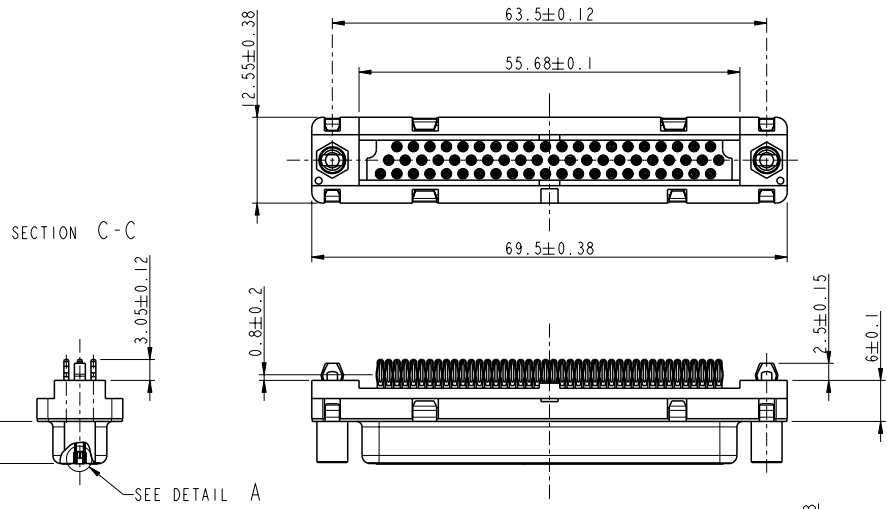
NOTE1: THESE DIMENSIONS MUST BE RESPECT TO SECURE PRESS-FIT PIN PERFORMANCES.
 NOTE-2: ACCORDING TO IEC -352-5 SPEC.
 NOTE-3: MAJOR REQUIEREMENT FOR PRESS-FIT PIN PERFORMANCE

PLATING FOR TIN LEAD VERSIONS

- Contacts : gold over nickel on mating area tin lead over nickel on termination
- Shells bright pure tin over copper or zinc cr3
- Accessories with harpoon: bright pure tin over copper
- Other accessories: bright pure tin over copper or zinc cr3



PC card Drilling Dimensions
(thickness 1.60 to 3.20 mm)



www.fciconnect.com		surface ISO 1302 ✓	tolerance std ISO 406 ISO 1101	projection	mm
		TOLERANCES UNLESS OTHERWISE SPECIFIED		size A2	Scale 1:1
Dr P. CRON	2006/10/11	ANGULAR	0.X ±0.3	ECN	LS06-0160
Eng M. PESSON	2006/10/11	LINEAR	0.XX ±0.1	Product family	D-SUB
Chr P. LEGARE	2006/10/11	0° ±2°	0.XXX ±0.05	Spec ref	
Appr P. LEGARE	2006/10/11	Product family		D-SUB Spec ref	
FCI SOCKET COMPACT D 62		WHITH STRAIGHT PRESS-FIT		deg no C01-8646-0689	Rev. C
catalog no				sheet 3 of 3	

Copyright FCI.