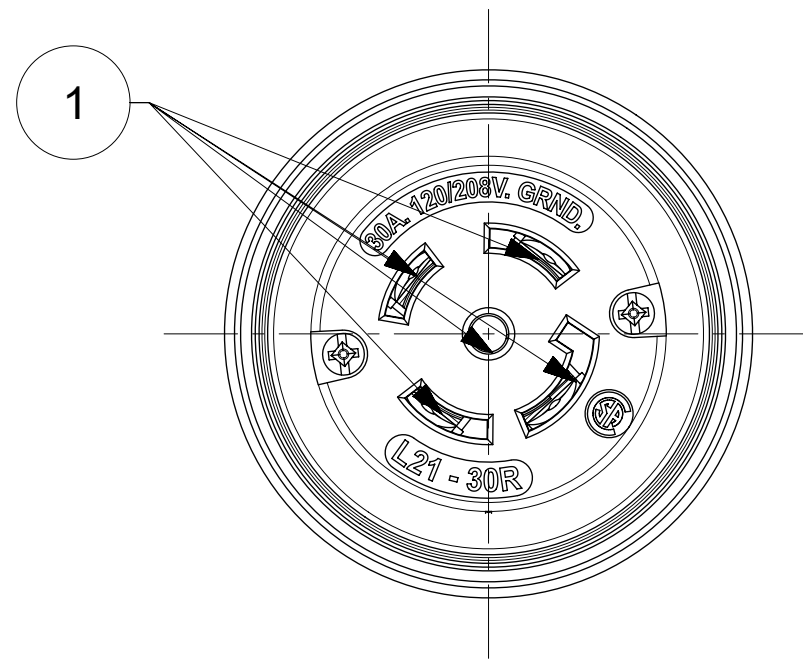
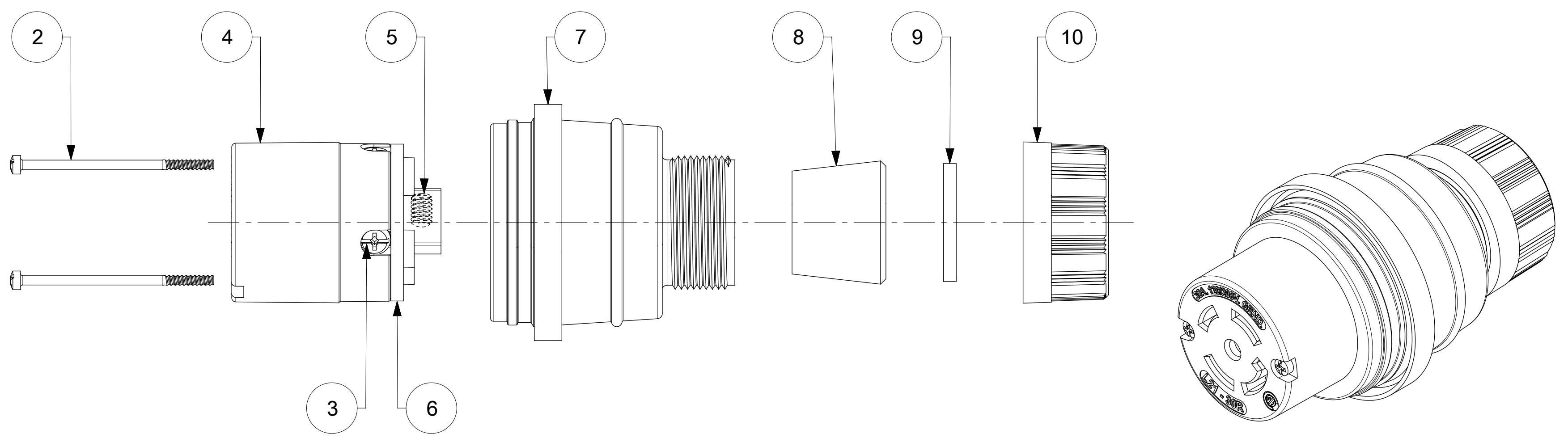
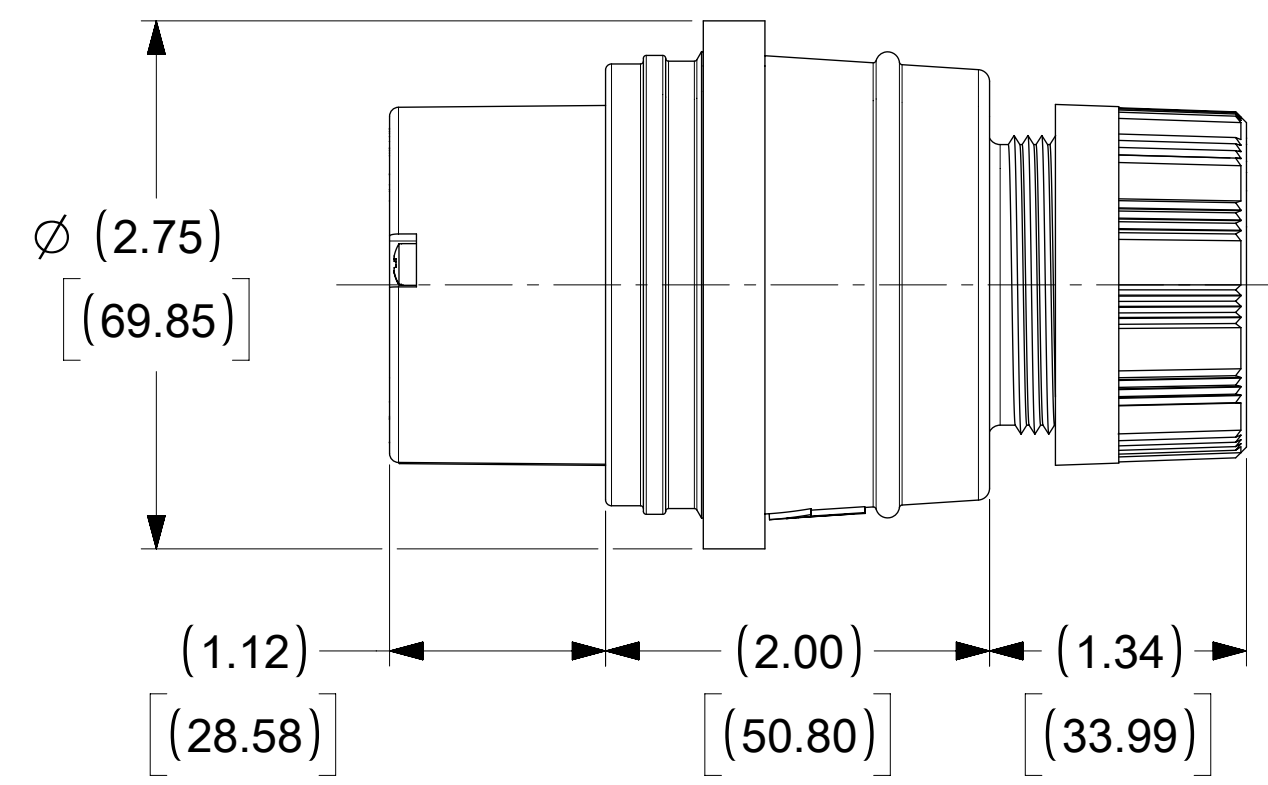


ORDER NO.	WOODHEAD NO.	COLOR
130147-0313	29W81MB-P	YELLOW



FACE VIEW



ITEM NO.	DESCRIPTION	MATERIAL	QTY.
1	BLADES	BRASS, NICKEL PLATED	5
2	RETAINING SCREWS	STAINLESS STEEL	2
3	CLAMP AND TERMINAL SCREW ASSY	BRASS, ZINC PLATED	4
4	INSERT	NYLON	1
5	SET SCREW	STAINLESS STEEL	1
6	TERMINAL COVER	POLYCARBONATE	1
7	HOUSING	SILICON WITH NYLON THREAD	1
8	GROMMET	RUBBER	4
9	FRICTION RING	NYLON	1
10	COMPRESSION NUT	NYLON	1

<b>SYMBOLS</b> DIMENSION UNITS: INCH[MM] SCALE: NTS GENERAL TOLERANCES (UNLESS SPECIFIED): 4 PLACES ± .0005 3 PLACES ± .0004 2 PLACES ± .0003 1 PLACE ± .0002 0 PLACES ± .0001 ANGULAR TOL ± .005° DRAFT WHERE APPLICABLE MUST REMAIN WITHIN DIMENSIONS		THIS DRAWING CONTAINS INFORMATION THAT IS PROPRIETARY TO MOLEX ELECTRONIC TECHNOLOGIES, LLC AND SHOULD NOT BE USED WITHOUT WRITTEN PERMISSION CURRENT REV DESC: RELEASED EC NO: 614388 DRWN: DSOPPIN 2019/01/03 CHK'D: DNGUYEN62 2019/04/24 APPR: HKNEELAND 2019/04/25 INITIAL REVISION: DRWN: DSOPPIN 2019/01/03 APPR: HKNEELAND 2019/04/25		 WATERTITE CONNECTOR MOTOR BASE 4P5W L21-30 PRODUCT CUSTOMER DRAWING	
DOCUMENT NUMBER: 1301470313 MATERIAL NUMBER: SEE TABLE		DOC TYPE: PSD DOC PART: 000 REVISION: A		CUSTOMER: GENERAL MARKET SHEET NUMBER: 1 OF 1	