



# MMC56xxNJX-B User Guide

## MMC56xxNJX-B

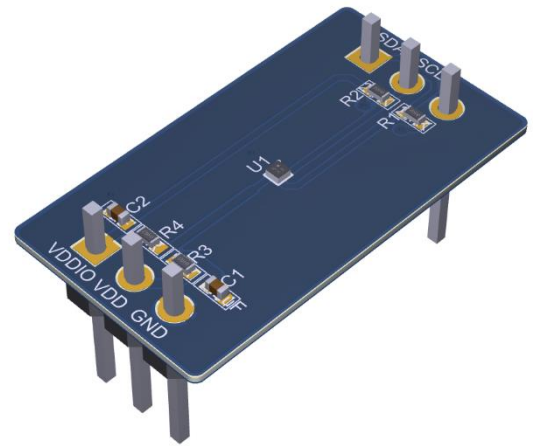
### GENERAL DESCRIPTION

The MMC56xxNJX-B provides a convenient and easy way to evaluate and prototype with the MMC56xxNJX three axes magnetic sensor. The magnetic sensor and passive components needed for operations are SMT mounted on the board. Communication, power and ground pins of the MMC56xxNJX SMT device are brought out to standard 0.10 inch on center connections on the sides of the prototyping board. Wires can either be soldered directly to the prototyping board or DIP pins can be used with widely available breadboard kits.

For complete performance specifications of MMC56xxNJX refer to MMC56xxNJX datasheet.

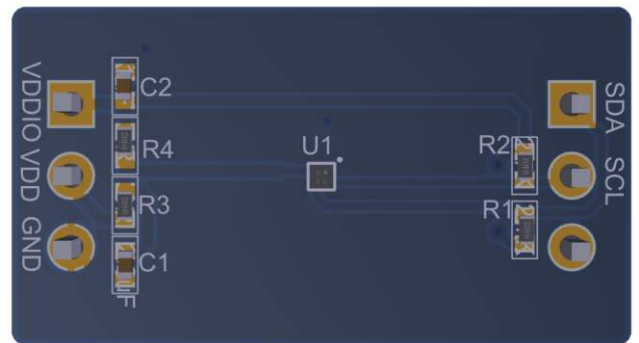
### PIN DESCRIPTION

Pin	Name	Description
P1-1	VDDIO	I2C Supply Voltage
P1-2	VDD3V	Power
P1-3	GND	Ground
P2-1	SDA	I2C SDA
P2-2	SCL	I2C SCL
P2-3	NC	NOT CONNECTED



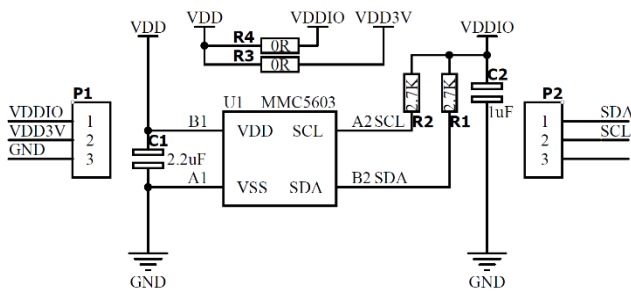
MMC56xxNJX-B

### PCB OUTLINE AND CONNECTION DIMENSIONS



MMC56xxNJX-B

### SCHEMATIC OF THE MMC56xxNJX-B



MMC56xxNJX-B

Information furnished by MEMSIC is believed to be accurate and reliable. However, no responsibility is assumed by MEMSIC for its use, nor for any infringements of patents or other rights of third parties, which may result from its use. No license is granted by implication or otherwise under any patent or patent rights of MEMSIC.

**MEMSIC Semiconductor (Wuxi) Co., Ltd.**

No.2 Xinhuihuan Road, Xinwu District, Wuxi, Jiangsu, China  
 Tel: +86-510-66616668 Fax: +86-510-66616669  
 www.memsic.com