

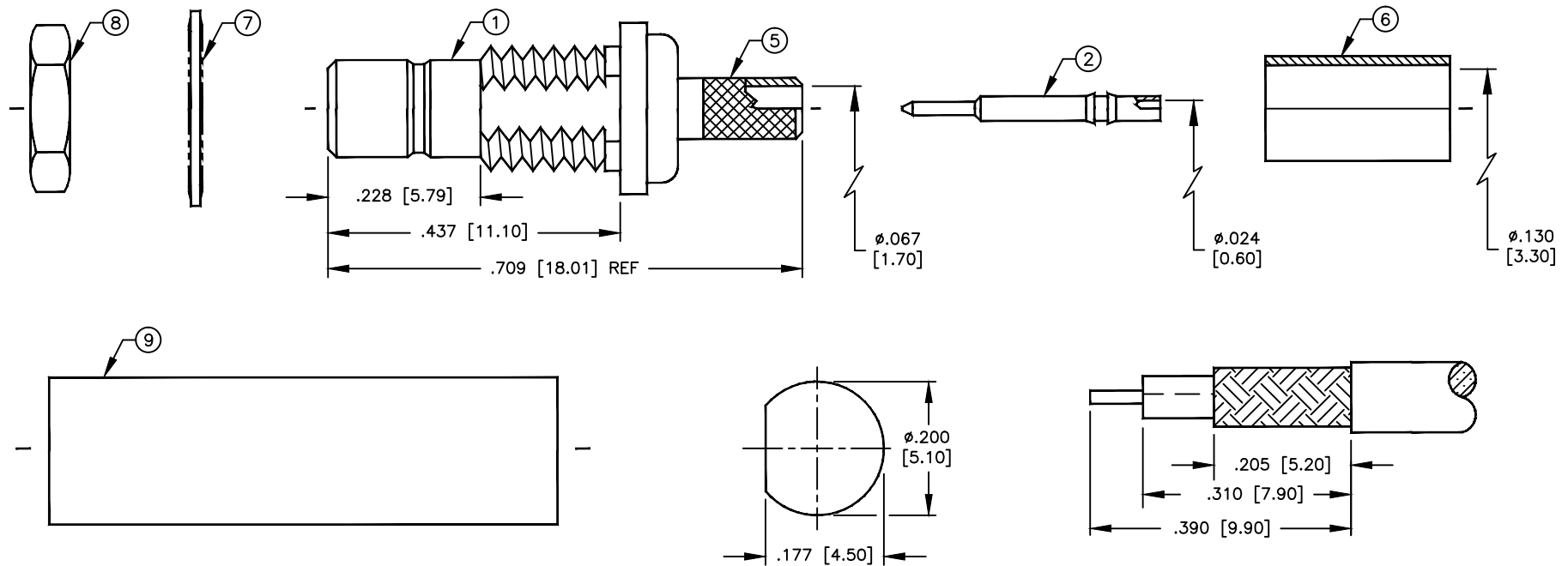
# SPECIFICATION CONTROL DRAWING

THIS DRAWING CONTAINS INFORMATION PROPRIETARY TO RF INDUSTRIES, LTD. ANY UNAUTHORIZED USE OF THIS DRAWING IS EXPRESSLY PROHIBITED. ANY VIOLATION IS PUNISHABLE UNDER U.S. COPYRIGHT LAWS.

| REV | DESCRIPTION         | DWN | DATE    | APPROVED |
|-----|---------------------|-----|---------|----------|
| A   | ENGINEERING RELEASE | KMM | 7/24/95 | R. RICE  |
| B   | ENGINEERING RELEASE | CZS | 3/26/99 | R. RICE  |
|     |                     |     |         |          |

ALL DIMENSIONS ARE REFERENCE ONLY

008974



**SUGGESTED STRIPPING INSTRUCTIONS**  
SUGGESTED CRIMP DIE: .130  
PIN TO BE SOLDERED

IMPEDANCE: 50 OHMS  
WORKING VOLTAGE: 400 VRMS @ SEA LEVEL  
FREQUENCY RANGE: 0-4 GHz  
INSERTION LOSS: ≤ .3dB MAX @ 1.5 GHz  
VSWR MAX: 1.3:1 @ 4 GHz  
FOR RG-316/U DOUBLE SHIELD CABLE

DIMENSIONS ARE IN INCHES AND [MILLIMETERS]

UNLESS OTHERWISE NOTED TOLERANCES ARE:

DECIMALS      DIAMETER

DRAWN  
C. ZUNIGA      3/26/99

CHECKED

ORJ DRAWN  
K. MAXWELL      7/24/95

APPROVALS      DATE

**RFconnectors**  
DIVISION OF RF INDUSTRIES, LTD.

7610 MIRAMAR RD  
SAN DIEGO, CA 92126  
(619)549-6340  
(619)549-6345 FAX

**RSB-4252-B1**

SMB CRIMP JACK BULKHEAD

|           |                   |                 |          |
|-----------|-------------------|-----------------|----------|
| SIZE<br>A | CABLE GROUP<br>B1 | DWG NO.<br>8542 | REV<br>B |
|-----------|-------------------|-----------------|----------|

SCALE: 4:1

CAD FILE 13ARC B

SHEET 1 OF 1

| ITEM | DESCRIPTION  | QTY | MATERIAL    | FINISH |
|------|--------------|-----|-------------|--------|
| 9    | TUBING       | 1   | HEAT SHRINK | BLACK  |
| 8    | HEX NUT      | 1   | BRASS       | NICKEL |
| 7    | LOCK WASHER  | 1   | BRASS       | NICKEL |
| 6    | FERRULE      | 1   | COPPER      | NICKEL |
| 5    | FERRULE STUD | 1   | BRASS       | NICKEL |
| 4    | DIELECTRIC   | 1   | PTFE        | NONE   |
| 3    | DIELECTRIC   | 1   | PTFE        | NONE   |
| 2    | PIN          | 1   | BRASS       | GOLD   |
| 1    | BODY         | 1   | BRASS       | NICKEL |