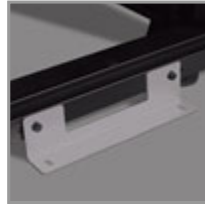


SmartRack 45U Wide Standard-Depth Rack Enclosure Cabinet - Doors & Side Panels Included, Shock Pallet Packaging

MODEL NUMBER: SR45UBWDSP1



Extra-wide rack cabinet houses, organizes and secures high-density rack equipment installations in network wiring closets and server rooms.

Features

Wide Server Rack Accommodates 42U of Rack Equipment and Side Cable Management

This SmartRack® 45U server rack is designed for network wiring closets, retail locations, classrooms, back offices and other areas with essential rack-mount IT equipment. It is 750 millimeters wide to allow more room for cable management and PDU mounting along the sides of the rack, which permits free front-to-rear airflow. Constructed from heavy-duty steel with a durable black powder-coated finish, the SR45UBWDSP1 has a maximum stationary load capacity of 3000 pounds (1360 kilograms) and a maximum rolling load capacity of 2250 pounds (1020 kilograms).

Ships on a Special Shock-Absorbing Pallet for Extra Safety

The SR45UBWDSP1 comes mounted on a special pallet that features additional reinforcement and shock-absorbing material. The pallet's protective cushion safeguards the enclosure and the precision components it contains during re-shipping. Reinforced pallets and reusable packaging provide the flexibility to fully configure rack enclosures in a centralized location and safely re-ship them to remote sites, saving significant service costs. They also allow the freedom to custom-configure enclosures with network and server hardware, UPS systems, PDUs, KVM switches and a variety of other devices prior to final installation. At the desired location, the SR45UBWDSP1 can be easily maneuvered with its preinstalled (removable) casters, rolled off the pallet on included heavy-duty ramps and secured by adjusting the preinstalled levelers.

Keeps Important Equipment Secure

The reversible front door, split rear doors and half-size side panels lock securely to help prevent damage, tampering or theft. The doors, side panels and top panel are designed for quick release, making it easy to access connected equipment and cabling with little effort. Convenient top access ports and an open bottom allow easy cable routing through the cabinet. The vented doors allow generous airflow from front to rear to keep your equipment cool and functioning at their peak.

Easy Equipment Installation

Front and rear pairs of vertical mounting rails adjust in quarter-inch increments to accommodate equipment up to 37 inches (940 millimeters) deep. Each rack space is numbered for quick reference, and an easy-view depth index ensures consistent rail placement without time-consuming measurements. Toolless 0U mounting rails allow quick installation of up to four compatible PDUs and vertical cable

Highlights

- Maximum capacity: 3000 lb. (1361 kg) stationary, 2250 lb. (1021 kg) rolling load
- Doors and side panels lock securely to help prevent damage, tampering or theft
- 750 mm wide to allow cable management and PDU mounting along the sides of the rack
- Provides physical equipment and media security required for PCI DSS compliance
- Ships on a special pallet with additional reinforcement and shock-absorbing material

Package Includes

- SR45UBWDSP1 45U Server Rack
- (4) Side panels
- (4) Side panel locks
- (2) Keys
- (50) M6 screws
- (50) M6 washers
- (50) M6 cage nuts
- Owner's manual

managers.

Designed for Baying Multiple Enclosures in a Row

Built-in baying tabs allow the combination of two or more rack cabinets in a row. Center-to-center width can be set at 30 inches (750 millimeters) to match standard data-center floor tiles.

Meets Payment Card Industry Standards

The SR45UBWDSP1 provides physical equipment and media security required for PCI DSS (Payment Card Industry Data Security Standard) compliance. This is essential for companies that process, store and/or transmit credit card information.

Specifications

OVERVIEW	
UPC Code	037332175236
Device Compatibility	Patch Panel; Network Switch; UPS; Server
Rack Type	Enclosure
PHYSICAL	
Color	Black
Rack Height	45U
Rack Depth	Standard
Factory Preset Rack Depth (in.)	27.75
Factory Preset Rack Depth (cm)	70.5
Factory Preset Rack Depth (mm)	705
Maximum Device Depth (cm)	93.98
Maximum Device Depth (in.)	37
Maximum Device Depth (mm)	940
Minimum Device Depth (cm)	10.16
Minimum Device Depth (in.)	4
Minimum Device Depth (mm)	102
Shipping Dimensions (hwd / in.)	90.30 x 31.00 x 45.00
Shipping Dimensions (hwd / cm)	229.36 x 78.74 x 114.30
Shipping Weight (lbs.)	390.00
Shipping Weight (kg)	176.90
Unit Dimensions (hwd / in.)	83.750 x 29.530 x 43.000
Unit Dimensions (hwd / cm)	212.725 x 75.01 x 109.22
Unit Weight (lbs.)	340
Unit Weight (kg)	154.22

Weight Capacity - Rolling (kg)	1,021
Weight Capacity - Rolling (lbs.)	2250
Weight Capacity - Stationary (kg)	1,361
Weight Capacity - Stationary (lbs.)	3000
Number of Vertical Mounting Rails	4
FEATURES & SPECIFICATIONS	
Grounding Details	Front and rear door frames
Built-in Cable Management	Yes
Extra Wide	Yes
Locking	No
Pre-Installed Casters	Yes
Outdoor Use	No
STANDARDS & COMPLIANCE	
Product Certifications	UL 60950-1
Product Compliance	RoHS; CE (Europe); UKCA
WARRANTY & SUPPORT	
Product Warranty Period (Worldwide)	5-year limited warranty