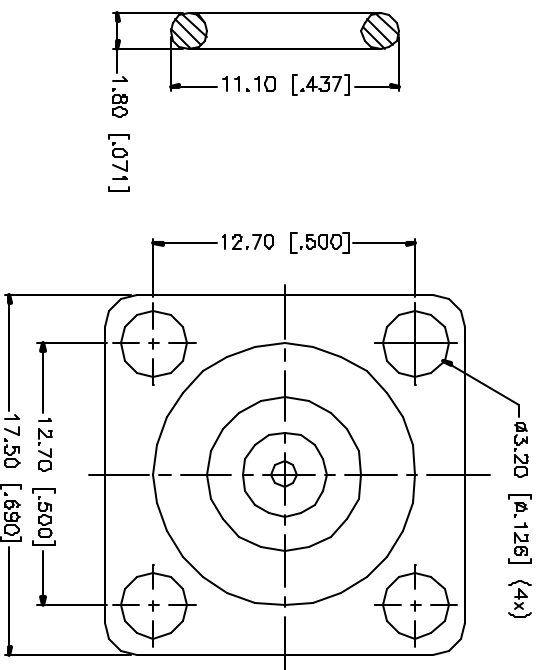
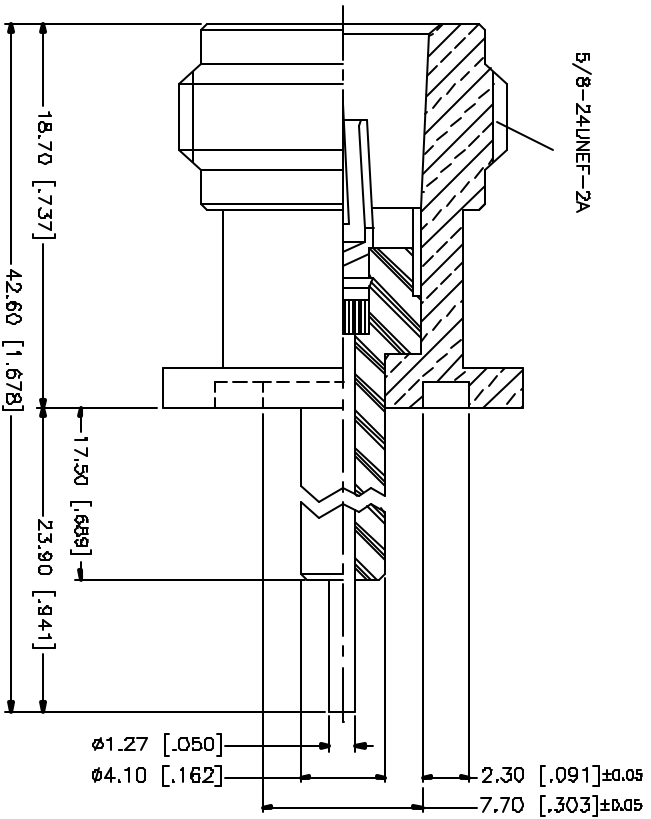


REV.	DATE	DESCRIPTION
A	02/27/00	REVISE O-RING GROOVE
B	04/22/00	ADD DURROMETER RATING TO GASKET
C	04/19/05	UPDATE DRAWING FORMAT



NO.	DESCRIPTION	MATERIAL	FINISH	QTY
7				
6				
5				
4	GASKET	SILICONE 70A SHORE DUREMETER	RED	1
3	CONTACT PIN	PHOS. BRONZE	GOLD	1
2	INSULATOR	TEFLON	NATURAL	1
1	BODY	BRASS	NICKEL	1
	DESCRIPTION	MATERIAL	FINISH	QTY

UNLESS OTHERWISE SPECIFIED DIMENSIONS ARE IN MILLIMETERS. DIMENSIONS IN () ARE IN INCHES AND FOR CONVENT REFERENCE ONLY.	APPROVALS	DATE
TOLERANCES FOR MILLIMETERS ARE: 0.5 - .8mm ± 0.20mm .8 - 36mm ± 0.40mm 30 - 120mm ± 0.50mm	DRAWN G.R.S.	04/18/05
TOLERANCES FOR INCHES ARE: .020 - .315 ± 0.0075 .315 - 1.180 ± 0.0154 1.180 - 4.1724 ± 0.0204	CHECKED	
DO NOT SCALE DRAWING	ISSUED	
	SHEET 1 OF 1	

3D0 FILE C:/172/172224.DWG	DWG. NO. 172224.DWG	REV. C	SIZE A	SCALE NA
-------------------------------	------------------------	-----------	-----------	-------------

Amphenol Connex

N PANEL RECEPTACLE
EXTENDED TEFLON (.689/.941)

PART NO. 172224