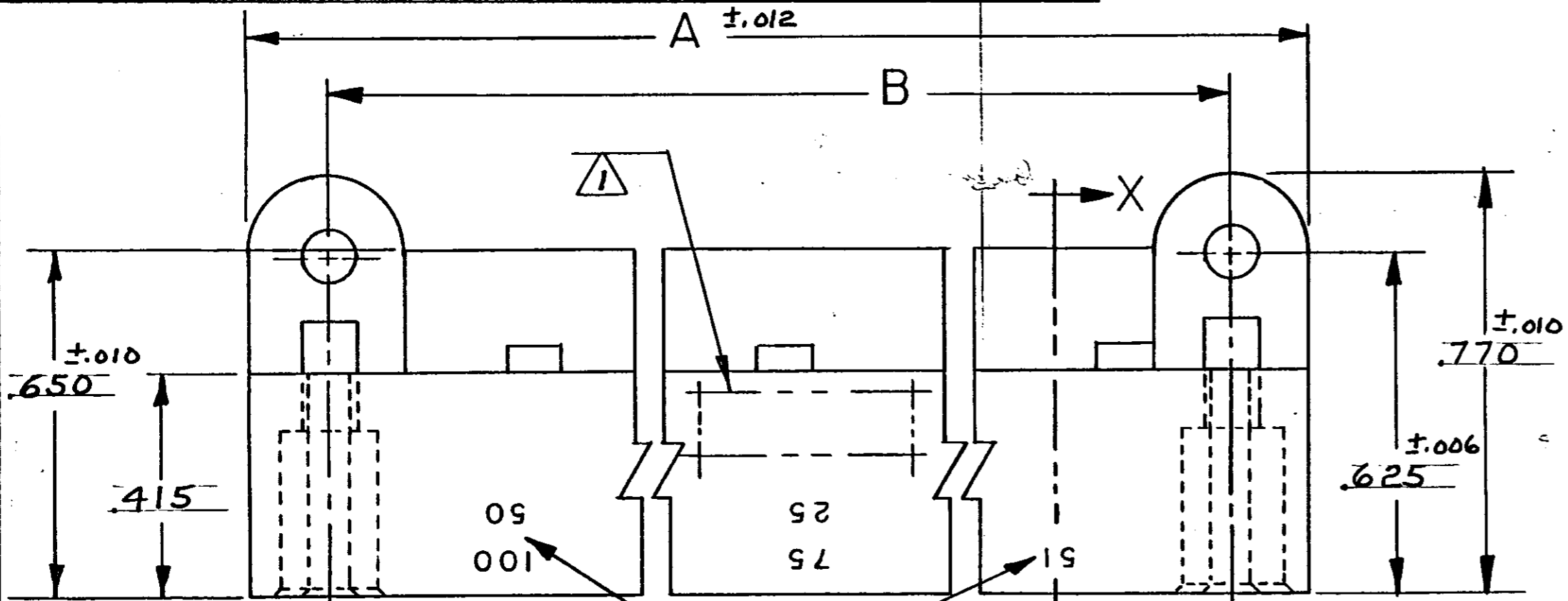
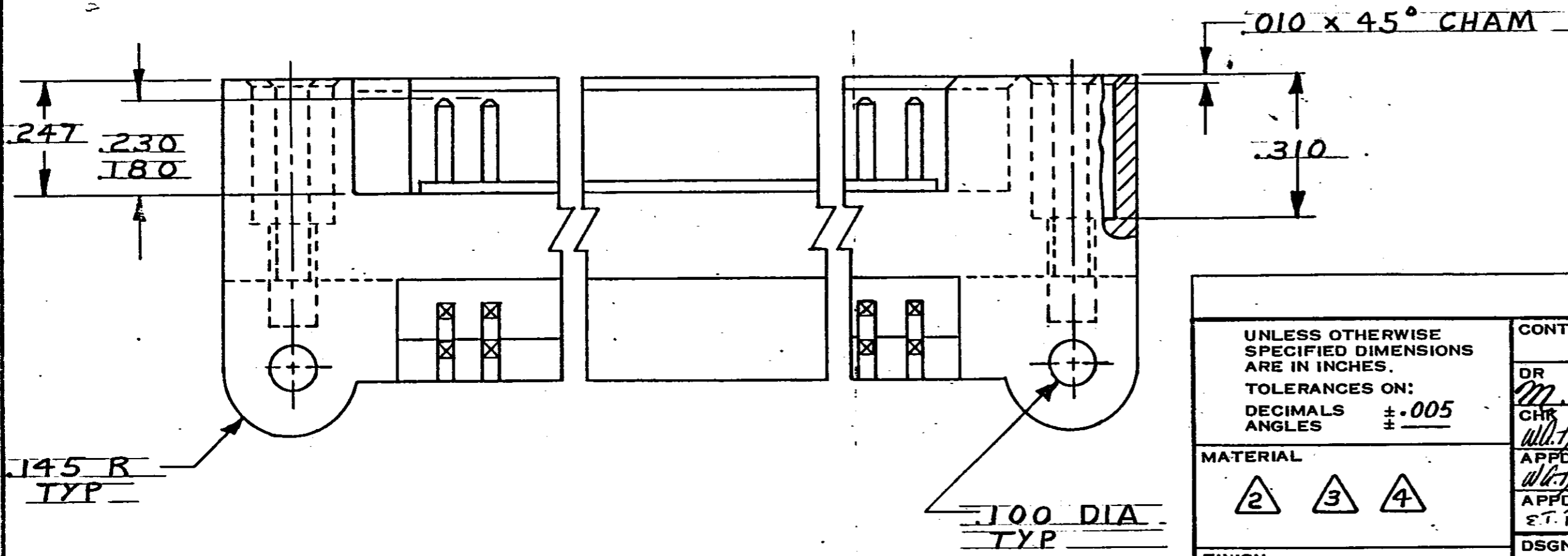
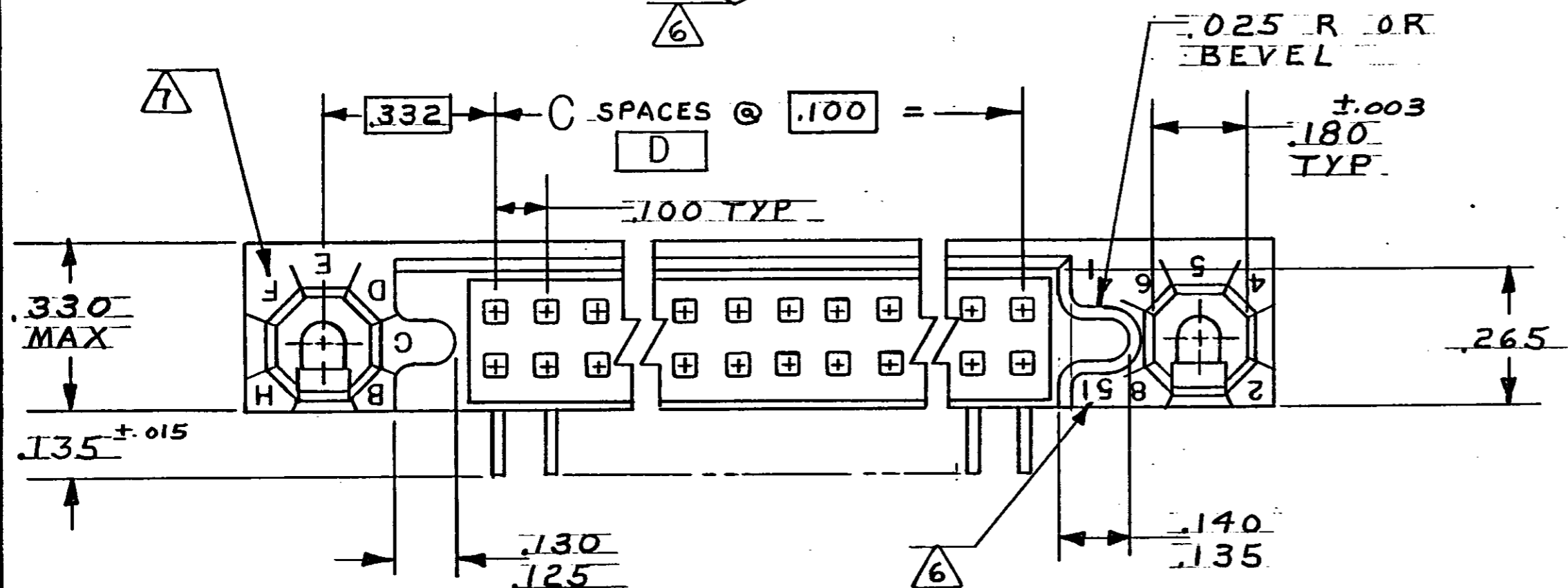
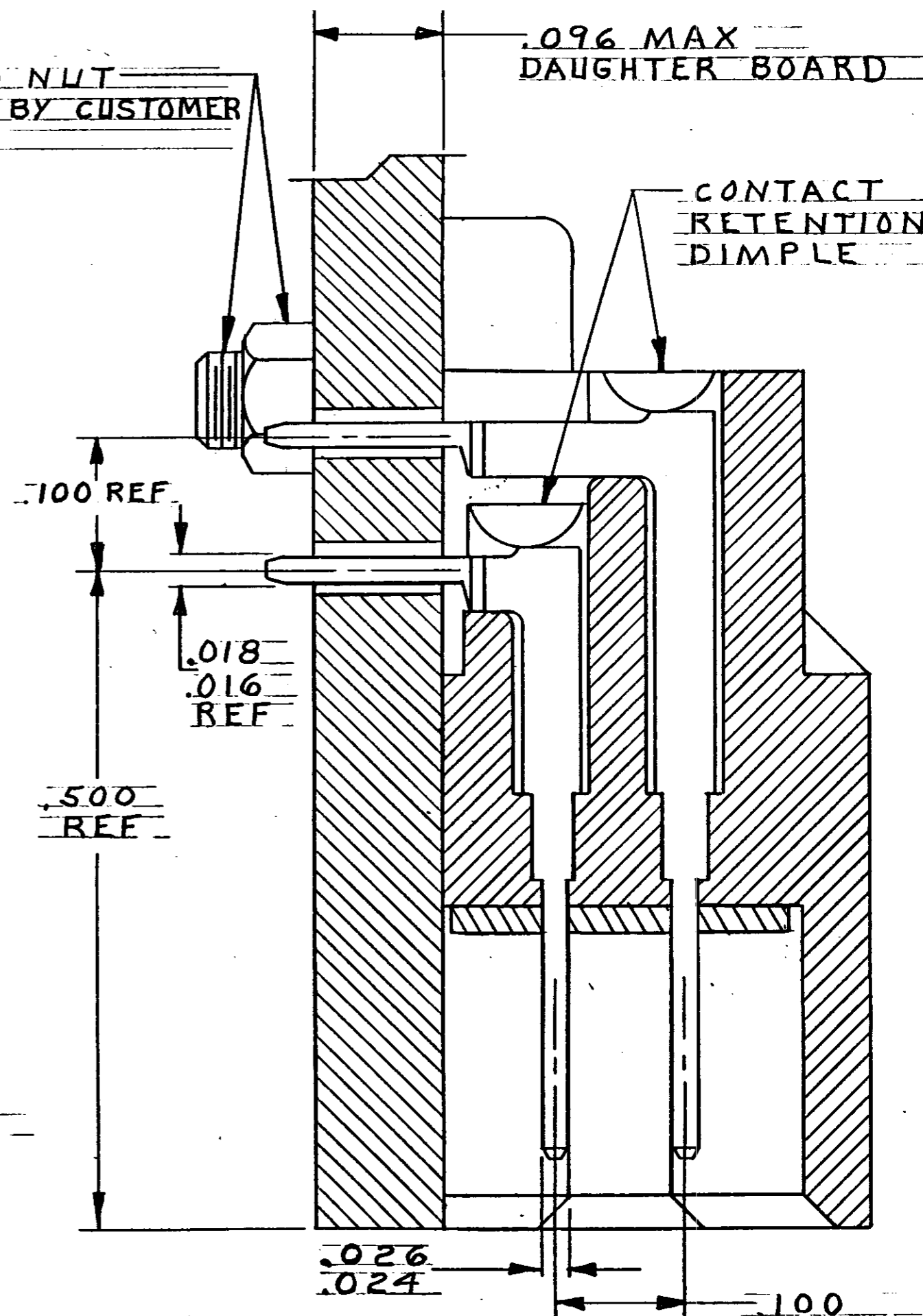


THIS DRAWING IS UNPUBLISHED. RELEASED FOR PUBLICATION 19  
© COPYRIGHT 19 BY AMP INCORPORATED, HARRISBURG, PA. ALL INTERNATIONAL RIGHTS RESERVED. AMP PRODUCTS MAY BE COVERED BY U.S. AND FOREIGN PATENTS AND/OR PATENTS PENDING.

| REVISIONS |   |      |     |               |          |          |
|-----------|---|------|-----|---------------|----------|----------|
| P         | F | ZONE | LTR | DESCRIPTION   | DATE     | APPROVED |
|           |   |      | J   | ECO-08-020831 | PY 10-08 | BW       |



BOLT AND NUT SUPPLIED BY CUSTOMER

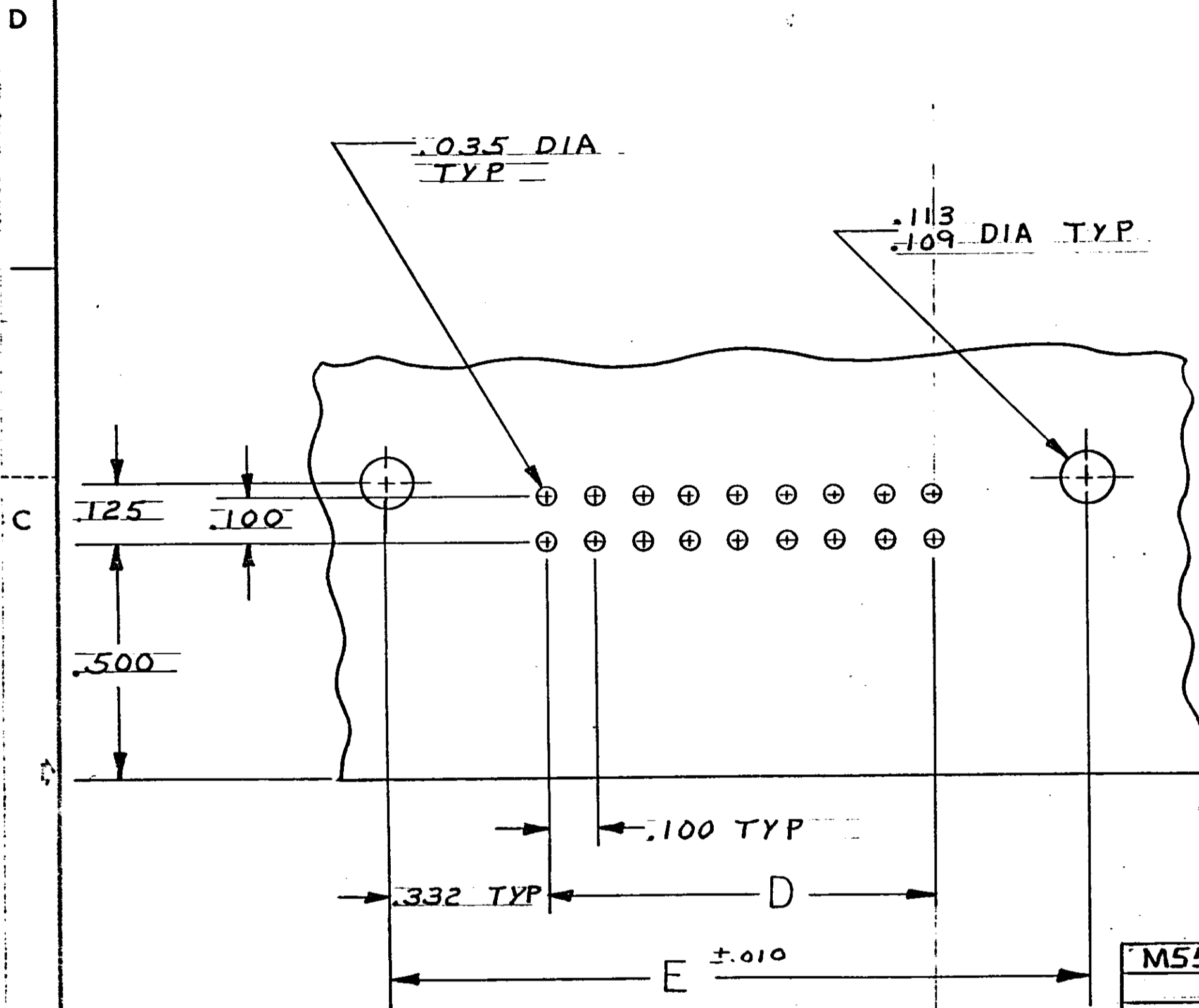


|  |   |  |               |
|--|---|--|---------------|
| UNLESS OTHERWISE SPECIFIED DIMENSIONS ARE IN INCHES.<br>TOLERANCES ON:<br>DECIMALS ±.005<br>ANGLES | CONTRACT NO                             | AMP   AMP INCORPORATED<br>Harrisburg, Pa. 17105                  |               |
|  | DR<br><i>M. Smith</i> 10-28-81          | NAME BOX CONNECTOR, PIN ASSY, RIGHT ANGLE, 100I SERIES, W/GASKET |               |
| MATERIAL   | CHR<br><i>W. Pritchard Jr</i> 12-16-81  | SIZE C   | FSCM NO 00779 |
| FINISH   | APPD<br><i>W. Pritchard Jr</i> 12-16-81 | DRAWING NO   | 531722        |
|  | APPD<br><i>ST. Parsons</i> 12-22-81     | REV  | J             |
|  | DSGN APPD                               | SCALE 4:1  | SHEET 1 OF 2  |
|  | OTHER APPD                              | PART NO  |               |

531722

THIS DRAWING IS UNPUBLISHED. RELEASED FOR PUBLICATION, 19  
 © COPYRIGHT 19 BY AMP INCORPORATED, HARRISBURG, PA. ALL INTERNATIONAL RIGHTS RESERVED. AMP PRODUCTS MAY BE COVERED BY U.S. AND FOREIGN PATENTS AND/OR PATENTS PENDING.

| REVISIONS |   |      |     |             |               |
|-----------|---|------|-----|-------------|---------------|
| P         | F | ZONE | LTR | DESCRIPTION | DATE APPROVED |
| ✓         | U |      |     | SEE SHT 1   |               |



- ① AMP, 00779, PART NUMBER; DATE CODE AND MILITARY PART NO. TO BE MARKED IN THIS APPROX AREA.
- ② HOUSING: GLASS FILLED POLYESTER COLOR - BLUE
- ③ CONTACT: BRASS FINISH: .000050 GOLD OVER NICKEL IN CONTACT AREA, TIN LEAD OVER NICKEL ON CONTACT TAILS.
- ④ GASKET: SILICONE RUBBER.
- ⑤ MIL-C-55302 GROUP A INSPECTION REQUIRED.
- ⑥ NUMBERS INDICATING EVERY FIVE CAVITIES MARKED ON SIDE, NUMBERS INDICATING END CAVITIES MARKED ON MATING FACE
- ⑦ KEY POSITION IDENTIFICATION MOLDED ON SURFACE SHOWN.
- ⑧ OBSPART NO.

RECOMMENDED P.C. BOARD LAYOUT

|                      |                   |       |       |    |       |       |                 |            |
|----------------------|-------------------|-------|-------|----|-------|-------|-----------------|------------|
| M55302/110-35        | 1 - 71            | 7.565 | 6.900 | 69 | 7.565 | 7.855 | 140             | 1-531722-3 |
| -34                  | 1 - 68            | 7.265 | 6.600 | 66 | 7.265 | 7.555 | 134             | 1-2        |
| -33                  | 1 - 66            | 7.065 | 6.400 | 64 | 7.065 | 7.355 | 130             | 1-1        |
| -32                  | 1 - 61            | 6.565 | 5.900 | 59 | 6.565 | 6.855 | 120             | 1-0        |
| -27                  | 1 - 56            | 6.065 | 5.400 | 54 | 6.065 | 6.355 | 110             | -9         |
| -26                  | 1 - 51            | 5.565 | 4.900 | 49 | 5.565 | 5.855 | 100             | -8         |
| -25                  | 1 - 46            | 5.065 | 4.400 | 44 | 5.065 | 5.355 | 90              | -7         |
| -24                  | 1 - 41            | 4.565 | 3.900 | 39 | 4.565 | 4.855 | 80              | -6         |
| -23                  | 1 - 36            | 4.065 | 3.400 | 34 | 4.065 | 4.355 | 70              | -5         |
| -22                  | 1 - 31            | 3.565 | 2.900 | 29 | 3.565 | 3.855 | 60              | -4         |
| -21                  | 1 - 26            | 3.065 | 2.400 | 24 | 3.065 | 3.355 | 50              | -3         |
| -20                  | 1 - 21            | 2.565 | 1.900 | 19 | 2.565 | 2.855 | 40              | -2         |
| M55302/110-19        | 1 - 16            | 2.065 | 1.400 | 14 | 2.065 | 2.355 | 30              | 531722-1   |
| MILITARY PART NUMBER | CONTACT IDENT NO. | E     | D     | C  | B     | A     | NO. OF POSITION | PART NO    |

|  |                                      |           |  |               |
|--|--------------------------------------|-----------|--|---------------|
| UNLESS OTHERWISE SPECIFIED DIMENSIONS ARE IN INCHES.<br>TOLERANCES ON:<br>DECIMALS ±.005<br>ANGLES ± | CONTRACT NO                          |           | AMP   AMP INCORPORATED<br>Harrisburg, Pa. 17105                  |               |
|  | DR <i>M. Smith</i> 10-29-81          |           | NAME BOX CONNECTOR, PIN ASSY, RIGHT ANGLE, 100I SERIES, W/GASKET |               |
|  | CHK <i>W. Pritchard Jr</i> 12-16-81  |           | SIZE C   | FSCM NO 00779 |
|  | APPD <i>W. Pritchard Jr</i> 12-16-81 |           | DRAWING NO 531722  | REV J         |
| MATERIAL   | APPD <i>E.T. Parsons</i> 12-22-81    | DSGN APPD | SCALE 4:1  | SHEET 2 of 2  |
| FINISH   | OTHER APPD                           |           |  |               |

531722