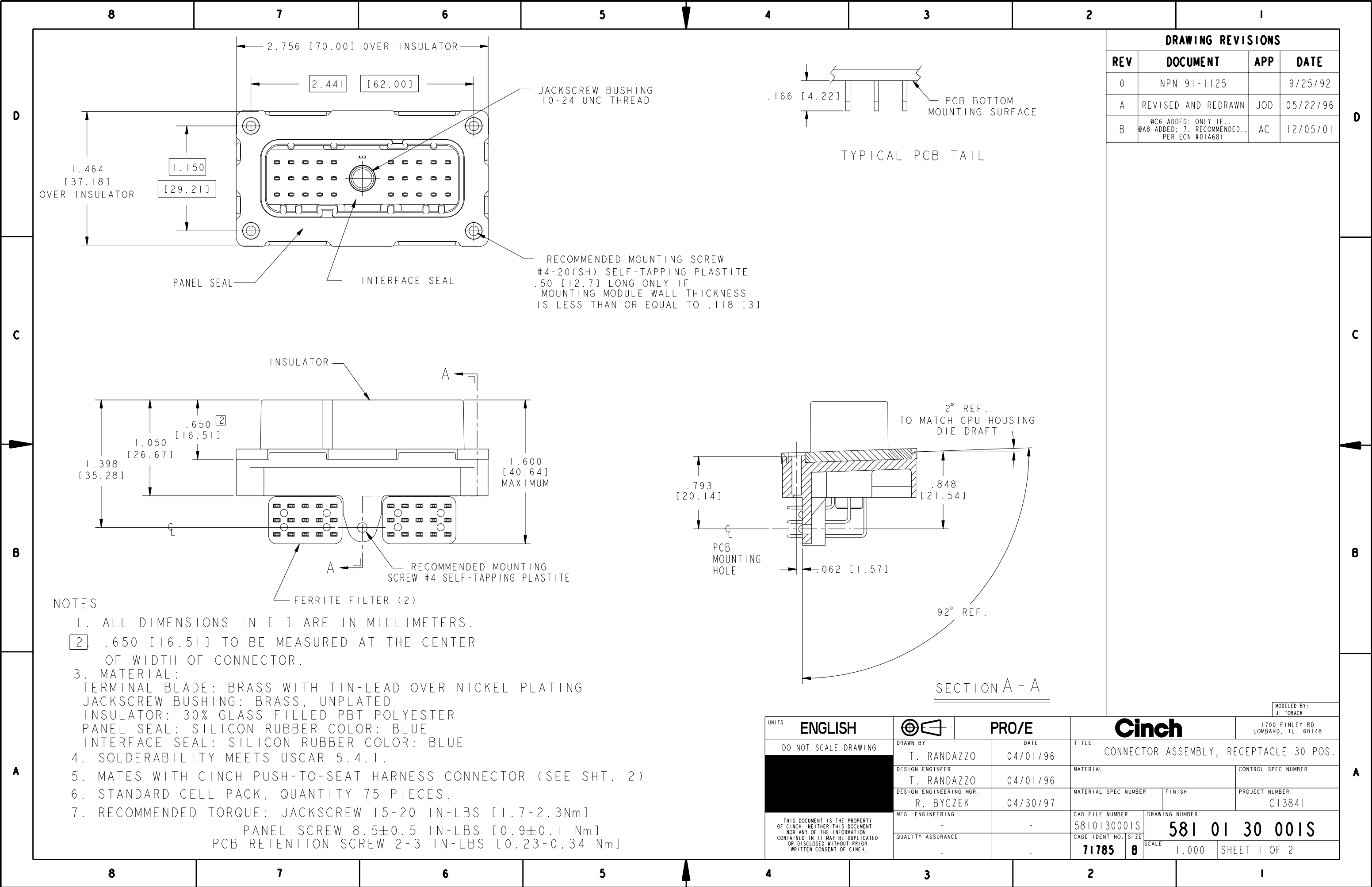
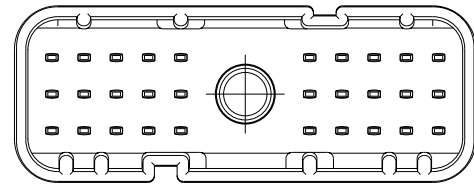


DRAWING REVISIONS			
REV	DOCUMENT	APP	DATE
0	NPN 91-1125		9/25/92
A	REVISED AND REDRAWN	JOD	05/22/96
B	@C6 ADDED: ONLY IF... @A8 ADDED: 7. RECOMMENDED... PER ECN #01A681	AC	12/05/01

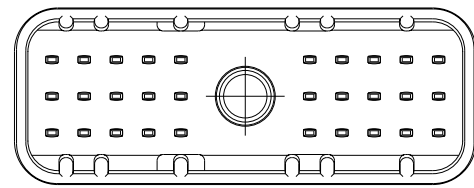
- NOTES
- ALL DIMENSIONS IN [] ARE IN MILLIMETERS.
 - .650 [16.51] TO BE MEASURED AT THE CENTER OF WIDTH OF CONNECTOR.
 - MATERIAL:
 TERMINAL BLADE: BRASS WITH TIN-LEAD OVER NICKEL PLATING
 JACKSCREW BUSHING: BRASS, UNPLATED
 INSULATOR: 30% GLASS FILLED PBT POLYESTER
 PANEL SEAL: SILICON RUBBER COLOR: BLUE
 INTERFACE SEAL: SILICON RUBBER COLOR: BLUE
 - SOLDERABILITY MEETS USCAR 5.4.1.
 - MATES WITH CINCH PUSH-TO-SEAT HARNESS CONNECTOR (SEE SHT. 2)
 - STANDARD CELL PACK, QUANTITY 75 PIECES.
 - RECOMMENDED TORQUE: JACKSCREW 15-20 IN-LBS [1.7-2.3Nm]
 PANEL SCREW 8.5±0.5 IN-LBS [0.9±0.1 Nm]
 PCB RETENTION SCREW 2-3 IN-LBS [0.23-0.34 Nm]

UNITS	ENGLISH	PRO/E	Cinch		MODELED BY: J. TOBACK
DO NOT SCALE DRAWING	DRAWN BY T. RANDAZZO	DATE 04/01/96	TITLE CONNECTOR ASSEMBLY, RECEPTACLE 30 POS.		
	DESIGN ENGINEER T. RANDAZZO	04/01/96	MATERIAL		CONTROL SPEC NUMBER
	DESIGN ENGINEERING MGR. R. BYCZEK	04/30/97	MATERIAL SPEC NUMBER	FINISH	PROJECT NUMBER C13841
MFG. ENGINEERING			CAD FILE NUMBER 5810130001S	DRAWING NUMBER 581 01 30 001S	
QUALITY ASSURANCE			CAGE IDENT NO. SIZE 71785 B	SCALE 1.000	SHEET 1 OF 2

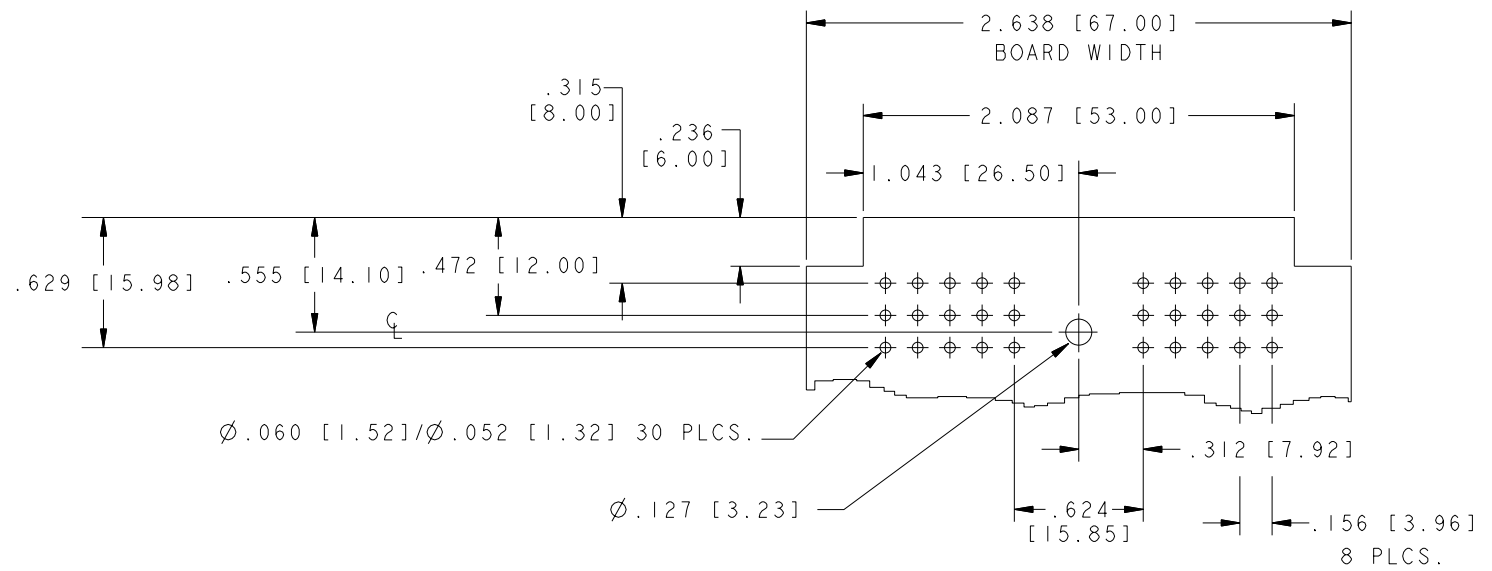




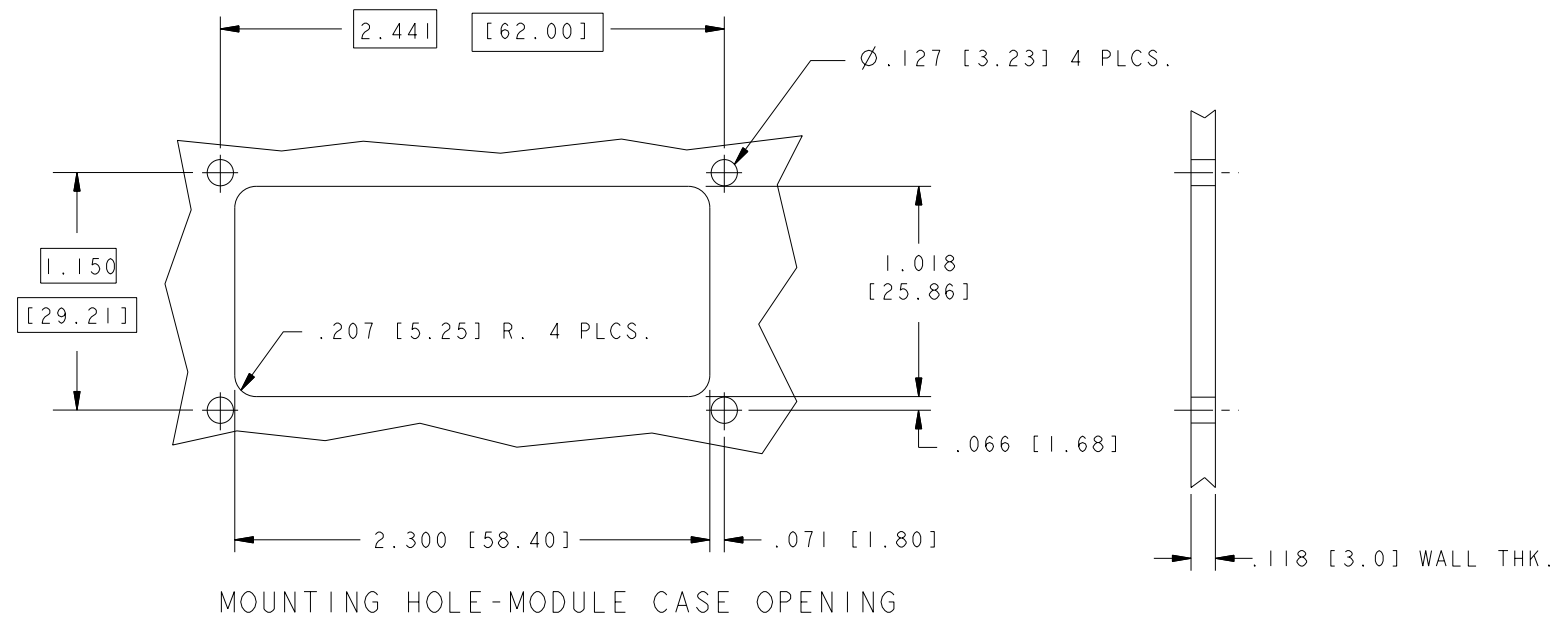
POLARIZATION "A"
581 01 30 001
HOUSING COLOR: GRAY



POLARIZATION "B"
581 01 30 002
HOUSING COLOR: BLACK



RECOMMENDED PC BOARD LAYOUT



MOUNTING HOLE-MODULE CASE OPENING

UNITS ENGLISH	Cinch		1700 FINLEY RD LOMBARD, IL. 60148
DO NOT SCALE DRAWING	TITLE CONNECTOR ASSEMBLY, RECEPTACLE 30 POS.		
	PRO/E DRAWING		
THIS DOCUMENT IS THE PROPERTY OF CINCH. NEITHER THIS DOCUMENT NOR ANY OF THE INFORMATION CONTAINED IN IT MAY BE DUPLICATED OR DISCLOSED WITHOUT PRIOR WRITTEN CONSENT OF CINCH.	CAD FILE NUMBER 5810130001S	DRAWING NUMBER 581 01 30 001S	REV B
	CAGE IDENT NO. SIZE 71785 B	SCALE 1.000	SHEET 2 OF 2