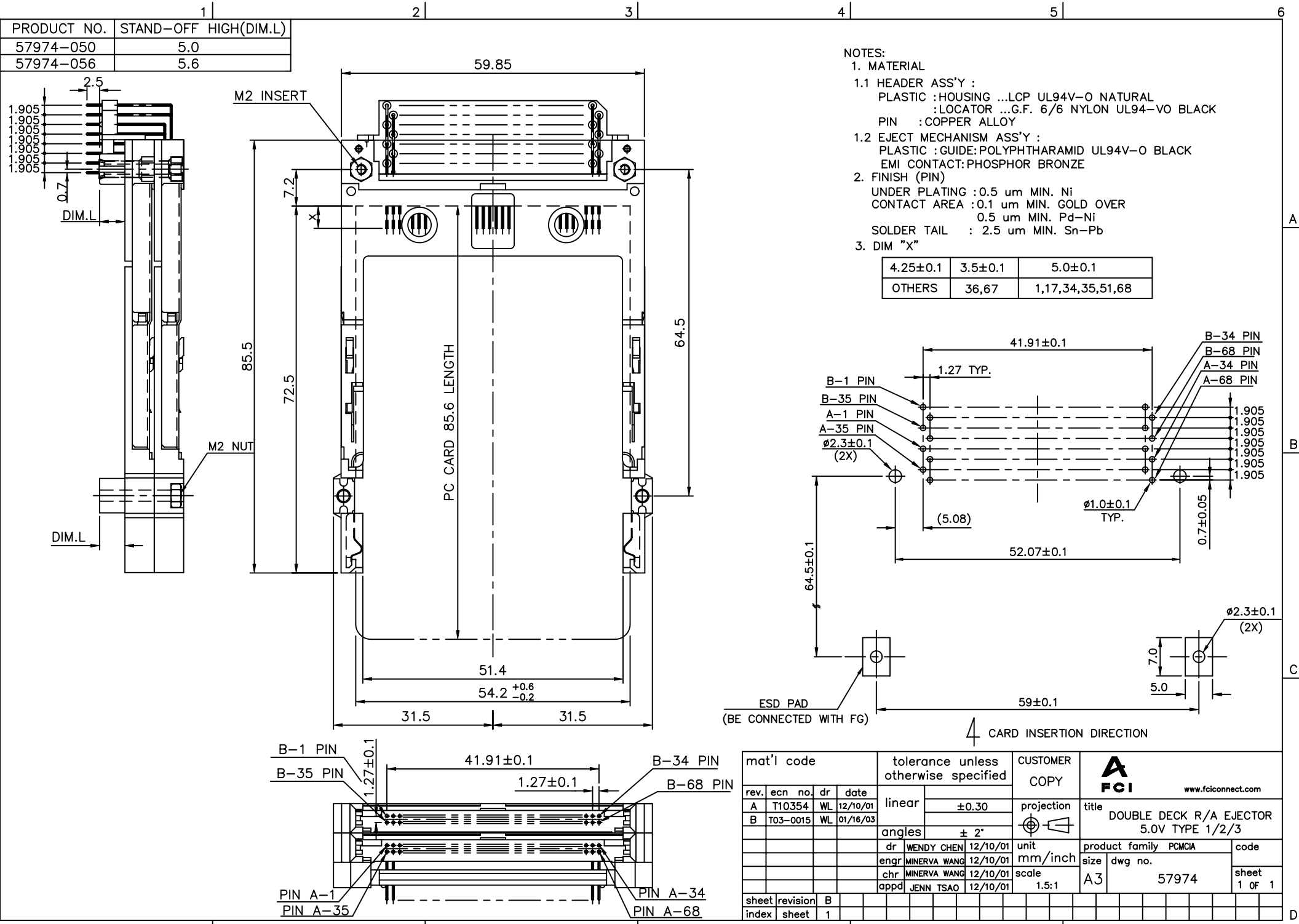


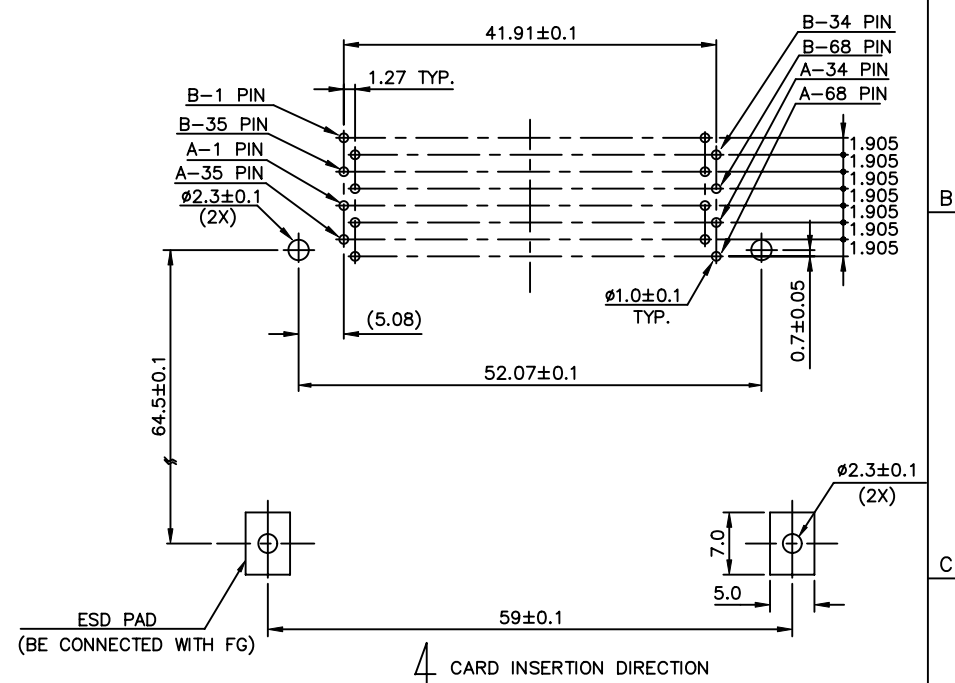
Tous droits strictement réservés. Reproduction ou communication à des tiers interdite sans autorisation écrite du propriétaire.
 Property of c BERG ELECTRONICS.
 Copyright BERG ELECTRONICS by

All rights strictly reserved. Reproduction or issue to third parties in any form or by any means without written authority from the proprietor.
 Property of c BERG ELECTRONICS.
 Copyright BERG ELECTRONICS by



- NOTES:
- MATERIAL
 - HEADER ASS'Y :
 - PLASTIC : HOUSING ...LCP UL94V-0 NATURAL
 - : LOCATOR ...G.F. 6/6 NYLON UL94-VO BLACK
 - PIN : COPPER ALLOY
 - EJECT MECHANISM ASS'Y :
 - PLASTIC : GUIDE: POLYPHTHARAMID UL94V-0 BLACK
 - EMI CONTACT: PHOSPHOR BRONZE
 - FINISH (PIN)
 - UNDER PLATING : 0.5 um MIN. Ni
 - CONTACT AREA : 0.1 um MIN. GOLD OVER
 - 0.5 um MIN. Pd-Ni
 - SOLDER TAIL : 2.5 um MIN. Sn-Pb
 - DIM "X"

4.25±0.1	3.5±0.1	5.0±0.1
OTHERS	36,67	1,17,34,35,51,68



mat'l code				tolerance unless otherwise specified		CUSTOMER COPY		 www.fciconnect.com	
rev.	ecn no.	dr	date	linear	±0.30	projection	title		
A	T10354	WL	12/10/01	angles	± 2°		DOUBLE DECK R/A EJECTOR		
B	T03-0015	WL	01/16/03	dr	WENDY CHEN 12/10/01	unit	product family		code
				enr	MINERVA WANG 12/10/01	mm/inch	PCMCIA		
				chr	MINERVA WANG 12/10/01	scale	size	dwg no.	sheet
				appd	JENN TSAO 12/10/01	1.5:1	A3	57974	1 OF 1
sheet	revision	B							
index	sheet	1							