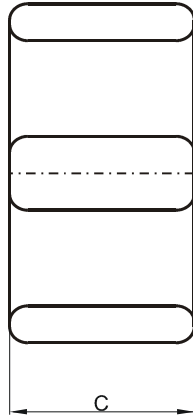
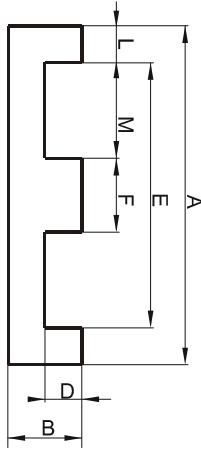


Specification for:

**0R49938EC**

110 Delta Drive  
Pittsburgh, PA 15238  
Phone: 412/696-1333  
Fax: 412/696-0333  
Email: magnetics@spang.com

**DIMENSIONS**



(mm)	Nominal:	Tol. min.:	Tol. max.:
<b>A</b>	102.0	-1.0	+ 1.0
<b>B</b>	20.3	-0.25	+ 0.25
<b>C</b>	37.5	-0.4	+ 0.4
<b>D</b>	13.3	-0.25	+ 0.25
<b>E</b>	86.0	-1.0	+ 1.0
<b>F</b>	14.0	-0.25	+ 0.25
<b>L</b>	8.0 Ref.		
<b>M</b>	36.0 Ref.		
Eff. Parameters			
Ae mm <sup>2</sup>	Amin mm <sup>2</sup>	le mm	Ve mm <sup>3</sup>
540	525	148	79800

**INDUCTANCE**

AL value (nH)	Test conditions
Nom: 9810 Min.: 7358	10 kHz, < 0.5 mT, 25 °C

**MARKING**

0R49938EC PXXXXX
---------------------

**CORE LOSSES**

P <sub>i</sub> max	Test conditions
112 mW/cm <sup>3</sup> (8.94 W/set)	100 kHz, 100 mT, 100 °C

**NOTE**

Spec. modifications	Previous	Revised
2005-06-22	L=8.0±0.25 M=35.94±0.51 Losses: General R material	L=8.0 Ref. M=36.0 Ref. Losses: Detail as indicated