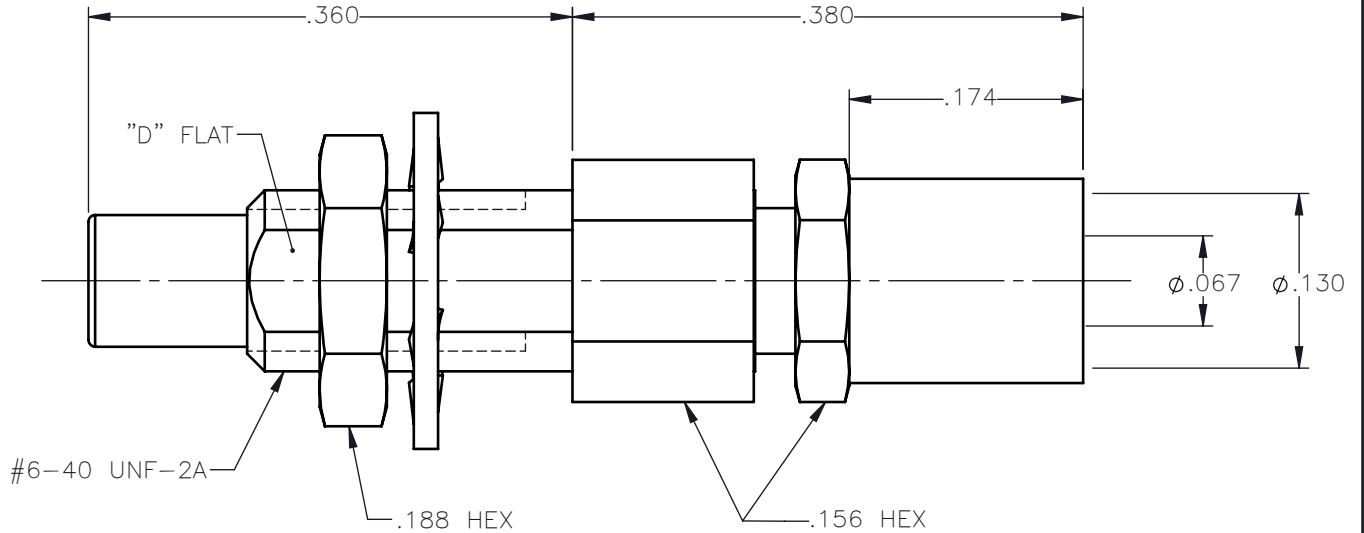
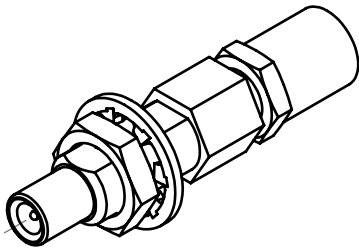


| REVISIONS | | | |
|-----------|----------------|----------|----------|
| REV. | DESCRIPTION | DATE | APPROVED |
| A | INITAL RELEASE | 06/04/15 | N.D. |





NOTES:

MATERIALS:

1. BODY & CONTACT = BERYLLIUM COPPER PER ASTM B196, ALLOY C17300, TEMPER TD04.
2. INSULATORS = VIRGIN WHITE TEFLON PER ASTM D1710, GRADE 1, TYPE I, CLASS "B".
3. CRIMP NUT & NUT = BRASS PER ASTM B16, ALLOY C36000, TEMPER H02.
4. LOCKWASHER = PHOSPHOR BRONZE PER ASTM B139, COPPER ALLOY C53400, TEMPER H04.
5. CRIMP SLEEVE = SEAMLESS LOWLEAD BRASS TUBE, ALLOY 330, SOFT ANNEAL TEMPER, .025/.060 GRAIN SIZE OR SEAMLESS COPPER TUBE PER ASTM B75, TYPE C12000, TEMPER: LIGHT ANNEAL O50 EXCEPT YIELD STRENGTH.
6. SHRINK TUBE = RNF100, YELLOW (NOT SHOWN).

FINISHES:

1. CONTACT = GOLD PLATE PER ASTM B488-01, TYPE II, 50 μ in MIN, GRADE C, OVER 100 TO 200 μ in STRESS FREE SULFAMATE NICKEL PER QQ-N-290.
2. ALL OTHER METAL PARTS = GOLD PLATE PER ASTM B488-01, TYPE II, 30 μ in MIN, GRADE C OVER 100 TO 200 μ in COPPER STRIKE PER MIL-C-14550.

| | | | | |
|---|-------------------------|-----------|---|---|
| UNLESS OTHERWISE SPECIFIED DIMENSIONS ARE IN INCHES TOLERANCES ON | DWN: | DATE |  Property of Radiall This document cannot be reproduced or communicated to a third party without prior written permission of RADIALL. |  |
| | N.D. | 06/04/15 | | |
| DECIMAL | ANGLE | CHKD: | DATE | SSMC STRAIGHT JACK BULKHEAD CRIMP TYPE FOR RG-316DS & SIMILAR CABLES |
| | | D.N. | 06/04/15 | |
| | | APVD: | DATE | |
| | | J.S. | 06/04/15 | SIZE: A FSCM NO.: 19505 DWG. NO.: 7003-1572-019 REV: A |
| REFERENCE: | MATERIALS AND FINISHES: | SEE NOTES | | SCALE: 7:1 THIRD ANGLE PROJECTION |
| ORIGINATED: N.D. DATE: 06/04/15 | | | | SHEET 1 OF 1 |

7003-1572-019