

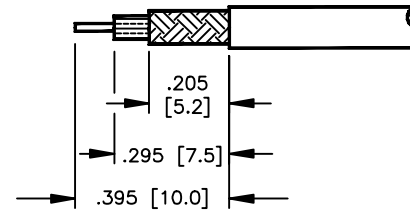
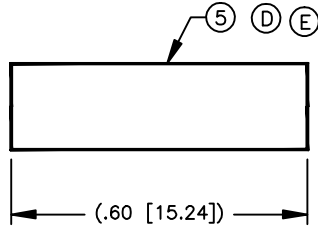
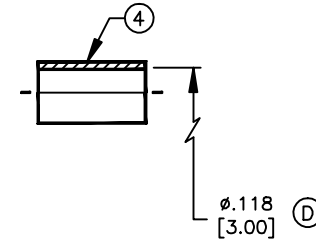
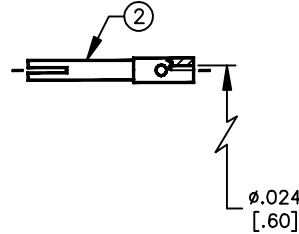
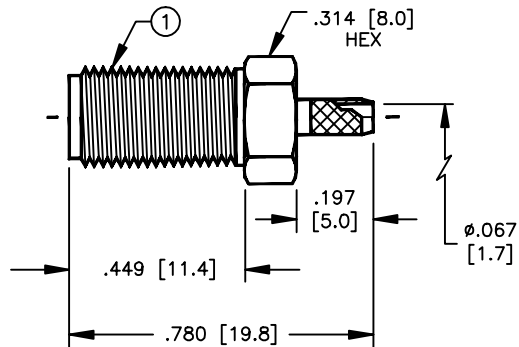
# SPECIFICATION CONTROL DRAWING

THIS DRAWING CONTAINS INFORMATION PROPRIETARY TO RF INDUSTRIES, LTD. ANY UNAUTHORIZED USE OF THIS DRAWING IS EXPRESSLY PROHIBITED. ANY VIOLATION IS PUNISHABLE UNDER U.S. COPYRIGHT LAWS.

REV	DESCRIPTION	DWN	DATE	APPROVED
B	ADD ELECTRICAL SPECS	KMM	9/1/96	R. RICE
C	REMOVE FLATS FROM BODY ITEM #1	CZS	5/28/98	R. RICE
D	CHANGE FERRULE ID ITEM #4 / ADD HEAT SHRINK ITEM #5	CZS	7/29/98	R. RICE
E	CHANGED SHRINK TUBE LENGTH (ITEM #5)	JDM	7/18/11	R. RICE

008974

ALL DIMENSIONS ARE REFERENCE ONLY



SUGGESTED STRIPPING INSTRUCTIONS  
SUGGESTED CRIMP: .130  
CONTACT TO BE SOLDERED

## SPECIFICATIONS:

IMPEDANCE: 50 OHMS  
WORKING VOLTAGE: 375 PEAK @ SEA LEVEL  
FREQUENCY RANGE: 0-12.4 GHz  
INSERTION LOSS:  $\leq -2$  dB @ 6 GHz  
FOR RG-174, 188, 188A, 316/U, ALPHA 9174, 9316,  
BELDEN 8216, 83269, 83284, 84316 & TIMES LMR-100 CABLE

DIMENSIONS ARE IN INCHES  
AND [MILLIMETERS]

UNLESS OTHERWISE NOTED  
TOLERANCES ARE:

DECIMALS DIAMETER

**RF connectors**  
DIVISION OF RF INDUSTRIES, LTD.

7610 MIRAMAR RD  
SAN DIEGO, CA 92126  
(619)549-6340  
(619)549-6345 FAX

# RSA-3050-B

SMA FEMALE CRIMP

ITEM	DESCRIPTION	QTY	MATERIAL	FINISH
5	TUBING	1	HEAT SHRINK	BLACK
4	FERRULE	1	COPPER	NICKEL
3	DIELECTRIC	1	PTFE	NONE
2	CONTACT	1	BeCu	GOLD
1	BODY	1	BRASS	NICKEL

DRAWN	C. ZUNIGA	7/29/98
CHECKED		
ORJ DRAWN	K. MAXWELL	4/21/94
APPROVALS		DATE

SIZE	CABLE GROUP	DWG NO.	REV
A	B	RSA-4050-B	E
SCALE:	2:1	CAD FILE	13ARC B
			SHEET 1 OF 1