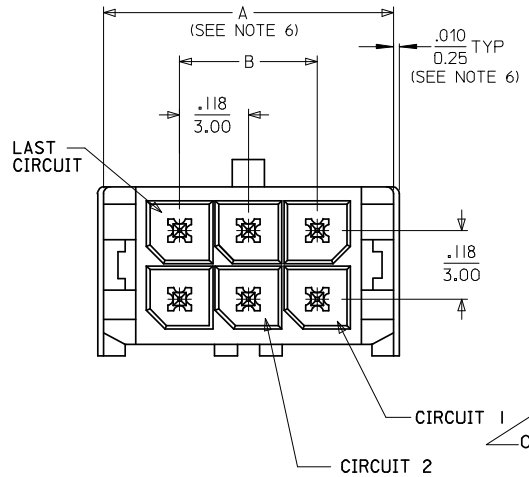


PCB LAYOUT: COMPONENT SIDE  
RECOMMEND PCB THICKNESS: .062/1.57



CKTS	A (SEE NOTE 6)		B	
04	.380	.118	9.65	3.00
06	.498	.236	12.65	6.00
08	.616	.354	15.65	9.00
10	.734	.472	18.65	12.00
12	.852	.591	21.65	15.00
14	.970	.709	24.65	18.00
16	1.088	.827	27.65	21.00
18	1.206	.945	30.65	24.00
20	1.325	1.063	33.65	27.00
22	1.443	1.181	36.65	30.00
24	1.561	1.299	39.65	33.00

**NOTES:**

- HOUSING MATERIAL: GLASS FILLED LIQUID CRYSTAL POLYMER, UL94V-0, COLOR: BLACK  
TERMINAL MATERIAL: BRASS ALLOY
- FINISH: A = .000100/(0.00254) MIN. TIN OVER  
.000050/(0.00127) MIN. NICKEL PLATE  
B = .000015/(0.00038) MIN SELECT GOLD IN CONTACT AREA,  
.000100/(0.00254) MIN. SELECT MATTE TIN ON SOLDER TAILS,  
BOTH OVER .000050/(0.00127) MIN. NICKEL PLATE.  
C = .000030/(0.00076) MIN. SELECT GOLD IN CONTACT AREA,  
.000100/(0.00254) MIN SELECT MATTE TIN ON SOLDER TAILS,  
BOTH OVER .000050/(0.00127) MIN. NICKEL PLATE.  
\*THE PRIMARY SHIPPING CARTON WILL BE LABELED "COMPLIANT TO RoHS  
DIRECTIVE 2002/95/EC AND ELV ANNEX II OF DIRECTIVE 2006/53/EC." CARTONS  
WITHOUT THIS LABEL MAY CONTAIN PRODUCT WITH TIN-LEAD IN THE PC TAIL AREA.
- PRODUCT SPECIFICATION: PS-43045
- TUBE PACKED: SEE MOLEX DRAWING PK-44429-002
- MATES WITH MICRO FIT (3.0) RECEPTACLE SERIES 43025
- .010/0.25 OFFSETS ARE PRESENT ON ALL PARTS MANUFACTURED AFTER 11/1/2007,  
AND ON PARTS PRIOR TO 11/1/2007 THAT CONTAIN A GREEN DOT ON THE PRIMARY  
SHIPPING CARTON LABEL.
- PARTS CONFORM TO CLASS B REQUIREMENTS OF COSMETIC SPECIFICATION  
PS-44299-002.

CIRCUIT "1" IDENTIFIED ON THIS SURFACE  
(APPROX. LOCATION SHOWN FOR REF.)

CKTS	FINISH A	FINISH B	FINISH C
	MATERIAL NO:	MATERIAL NO:	MATERIAL NO:
02	N/A -	N/A -	N/A -
04	4539I-04I2	4539I-04I3	4539I-04I4
06	4539I-06I2	4539I-06I3	4539I-06I4
08	4539I-08I2	4539I-08I3	4539I-08I4
10	4539I-10I2	4539I-10I3	4539I-10I4
12	4539I-12I2	4539I-12I3	4539I-12I4
14	4539I-14I2	4539I-14I3	4539I-14I4
16	4539I-16I2	4539I-16I3	4539I-16I4
18	4539I-18I2	4539I-18I3	4539I-18I4
20	4539I-20I2	4539I-20I3	4539I-20I4
22	4539I-22I2	4539I-22I3	4539I-22I4
24	4539I-24I2	4539I-24I3	4539I-24I4

ADD .097 DIM. NOTE 7 EC NO: UCP2008-0324 DRAWN: KIPER 2007/12/19 CHKD: SSOUSEK 2007/12/20 APPR: F5M1TH 2007/12/21 REV T1	QUALITY SYMBOLS ▽=0 ▽=0	GENERAL TOLERANCES (UNLESS SPECIFIED) <table border="1"> <tr> <th></th> <th>mm</th> <th>INCH</th> </tr> <tr> <td>4 PLACES</td> <td>±---</td> <td>±---</td> </tr> <tr> <td>3 PLACES</td> <td>±---</td> <td>±.010</td> </tr> <tr> <td>2 PLACES</td> <td>±0.25</td> <td>±.014</td> </tr> <tr> <td>1 PLACE</td> <td>±0.36</td> <td>±---</td> </tr> </table> ANGULAR ±1/2°		mm	INCH	4 PLACES	±---	±---	3 PLACES	±---	±.010	2 PLACES	±0.25	±.014	1 PLACE	±0.36	±---	DIMENSION STYLE IN/MM	SCALE ---	DESIGN UNITS METRIC	THIRD ANGLE PROJECTION
		mm	INCH																		
	4 PLACES	±---	±---																		
	3 PLACES	±---	±.010																		
2 PLACES	±0.25	±.014																			
1 PLACE	±0.36	±---																			
DRAWN BY MUELLER 2002/09/09	DATE 2002/09/09	CHECKED BY MUELLER 2002/09/09	DATE 2002/09/09	TITLE MICRO FIT (3.0) DUAL ROW VERTICAL THRU HOLE HEADER ASS'Y NO PEGS																	
APPROVED BY MARGULIS 2002/09/09	DATE 2002/09/09	MATERIAL NO. SEE CHART		DOCUMENT NO. SD-45391-001																	
DRAFT WHERE APPLICABLE MUST REMAIN WITHIN DIMENSIONS			SIZE C	THIS DRAWING CONTAINS INFORMATION THAT IS PROPRIETARY TO MOLEX INCORPORATED AND SHOULD NOT BE USED WITHOUT WRITTEN PERMISSION																	