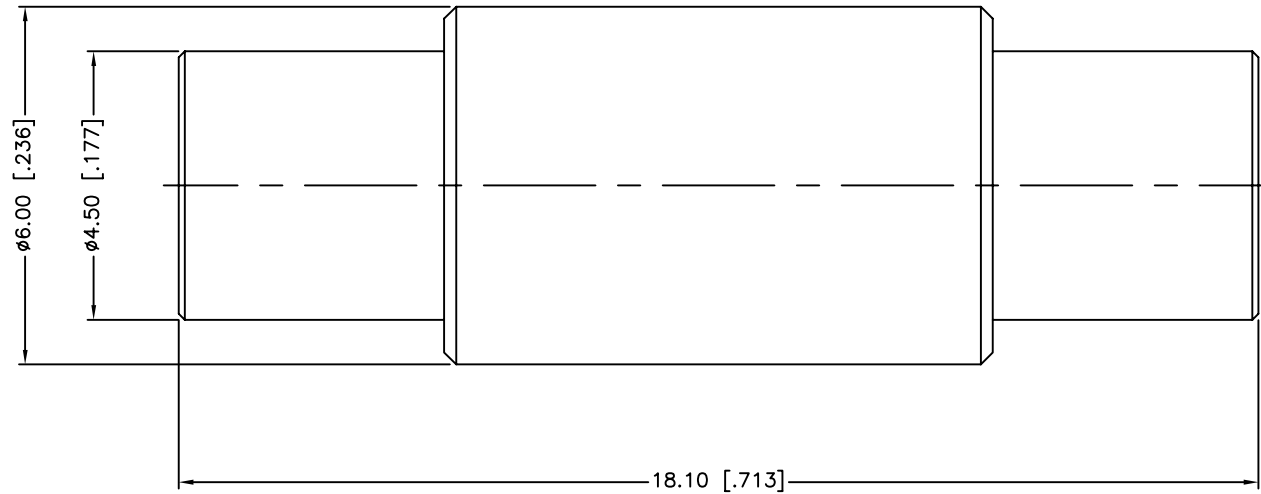


REV.	DATE	ECR NO.	DESCRIPTION
NC	06/15/10	XXXXXX	INITIAL RELEASE



1. FREQUENCY RANGE: DC 0-2.5 GHz
2. DIELECTRIC WITHSTANDING VOLTAGE: 500 VRMS, MIN.

<small>UNLESS OTHERWISE SPECIFIED DIMENSIONS ARE IN MILLIMETERS. DIMENSIONS IN [ ] ARE IN INCHES AND FOR CUSTOMER REFERENCE ONLY.</small> <small>UNLESS OTHERWISE SPECIFIED TOLERANCES FOR MILLIMETERS ARE:</small> 0.5 - 8mm $\pm$ 0.20mm 8 - 30mm $\pm$ 0.40mm 30 - 120mm $\pm$ 0.50mm <small>UNLESS OTHERWISE SPECIFIED TOLERANCES FOR INCHES ARE:</small> .020 - .315 $\pm$ 0.007" .315 - 1.180 $\pm$ 0.015" 1.180 - 4.724 $\pm$ 0.020" DO NOT SCALE DRAWING	APPROVALS	DATE	<h1 style="color: blue;">Amphenol Connex</h1>		
	DRAWN M.ZHANG	06/15/10			
	CHECKED		PART NO. <b>252169-75</b>		
	ISSUED				
	SHEET 1 OF 1		REV. NC	SIZE A	SCALE NA

3	CONTACT PIN	BERYLLIUM COPPER	GOLD	1
2	INSULATOR	PTFE	NATURAL	1
1	BODY	BRASS	GOLD	1
DESCRIPTION	MATERIAL	FINISH	QTY	