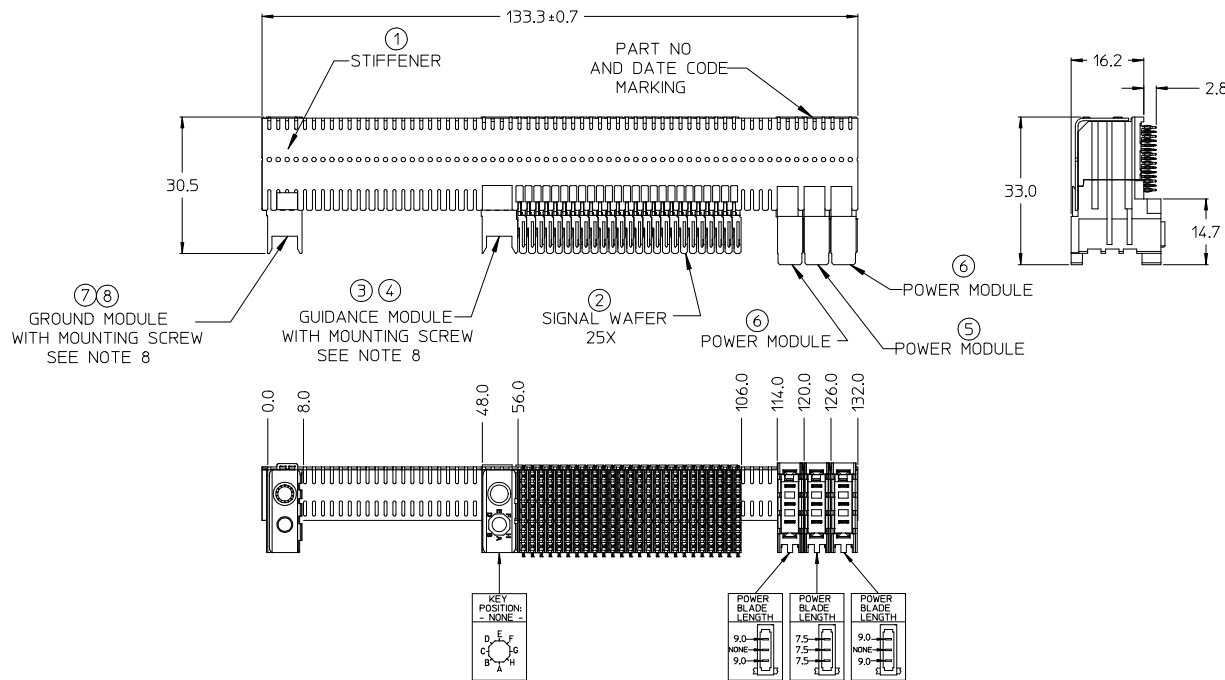


CUSTOMER: CEDAR POINT COMMUNICATIONS

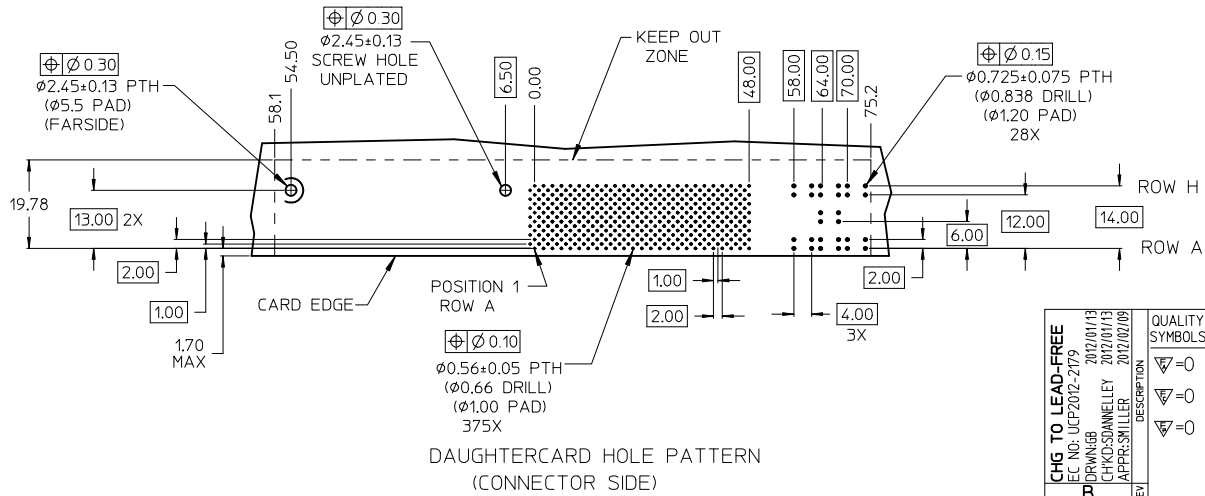
NOTES: (UNLESS OTHERWISE SPECIFIED)

1. MATERIALS: HOUSING - LIQUID CRYSTAL POLYMER (LCP)
GLASS-FILLED, UL94V-0.
TERMINALS - HIGH PERFORMANCE COPPER ALLOY.
STIFFENER - STAINLESS STEEL.
2. FINISH: SELECTIVE GOLD (Au) IN CONTACT AREA.
SELECTIVE TIN/LEAD (Sn/Pb) ON PCB TAILS,
NICKEL (Ni) OVERALL.
3. REFER TO MOLEX PRODUCT SPECIFICATION PS-74031-999 FOR PERFORMANCE SPECIFICATIONS.
4. REFER TO MOLEX DOCUMENT SD-74041-002 FOR ADDITIONAL DETAIL ON THE SIGNAL WAFER.
5. REFER TO MOLEX DOCUMENT SD-74037-006 FOR ADDITIONAL DETAIL ON THE GUIDANCE MODULE.
6. REFER TO MOLEX DOCUMENT SD-75885-002 FOR ADDITIONAL DETAIL ON THE POWER MODULE.
7. REFER TO MOLEX DOCUMENT SD-74039-017 FOR ADDITIONAL DETAIL ON THE GROUND MODULE.
8. MOUNTING SCREWS WILL BE BAGGED WITH EACH CONNECTOR.
9. PARTS ARE PACKAGED IN TUBES PER PK-70873-5041.



LEAD-FREE
PLATING

ITEM	PART NUMBER	DESCRIPTION	QTY
1	74046-0133	STIFFENER	1
2	74041-1001	SIGNAL WAFER, LF	25
3	74037-0008	POLARIZING/GUIDE MODULE	1
4	73726-0000	GUIDE MODULE MNTG SCREW	1
5	75885-8111	POWER MODULE, LF	1
6	75885-8202	POWER MODULE, LF	2
7	74039-8908	GROUND MODULE	1
8	73774-0000	GROUND MNTG SCREW	1



DAUGHTERCARD HOLE PATTERN
(CONNECTOR SIDE)

CHG TO LEAD-FREE IEC NO. UICP2012-2179 2012/01/13 CHYKSDANIELLEY 2012/01/13 APPROV:SMILLER 2012/02/09	QUALITY SYMBOLS	GENERAL TOLERANCES (UNLESS SPECIFIED)	DIMENSION STYLE	SCALE	DESIGN UNITS	THIRD ANGLE PROJECTION
	▽=0	mm INCH	MM ONLY	2:1	METRIC	☉
	▽=0	4 PLACES ±--- ±---	DRAWN BY	DATE	TITLE	
	▽=0	3 PLACES ±--- ±---	GB	2012/01/16	VHDM 8 ROW, LF DAUGHTERCARD SALES DRAWING	
	2 PLACES ±0.25 ±---	CHECKED BY	DATE	MOLEX INCORPORATED		
	1 PLACE ±0.38 ±---	SREED	2004/02/20			
	ANGULAR ±1/2°	APPROVED BY	DATE			
		SMILLER	2012/02/09			
	DRAFT WHERE APPLICABLE MUST REMAIN WITHIN DIMENSIONS	MATERIAL NO.	DOCUMENT NO.			
		74040-1014	SD-74040-1014			
		THIS DRAWING CONTAINS INFORMATION THAT IS PROPRIETARY TO MOLEX INCORPORATED AND SHOULD NOT BE USED WITHOUT WRITTEN PERMISSION				
		SIZE	SHEET NO.			
		D	1 OF 1			