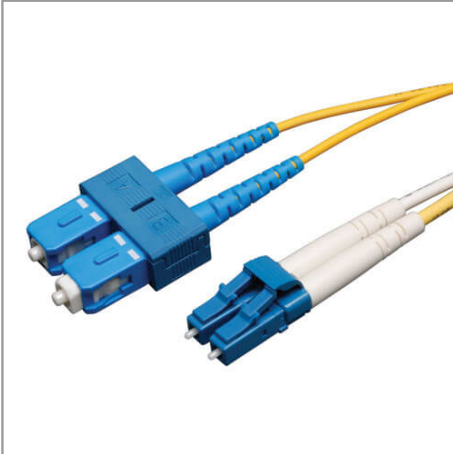


## Duplex Singlemode 9/125 Fiber Patch Cable (LC/SC), 10M (33 ft.)

MODEL NUMBER: **N366-10M**



### Features

- Manufactured from 9/125 duplex (zipcord) fiber
- PVC jacket
- Length: 10 meters. Connectors: 2 x SC; 2 x LC
- Insertion loss testing performed on every connector (0.2db typical) and provided with cable
- Beveled edge on ends of glass makes insertion of plug a breeze
- Fiber made from glass (not a polymer)
- Fiber optic distributed data interface (FDDI) rated
- OFNR (riser rated)

## Specifications

OVERVIEW	
UPC Code	037332122858
Technology	Singlemode
Optical Mode	OS2
PHYSICAL	
Cable Jacket Color	Yellow
Connector Color	Blue; Blue; White
Cable Jacket Material	LSZH
Cable Jacket Rating	OFNR

### Highlights

- Premium PVC 9/125 micron singlemode patch cables
- Attenuation loss meets or exceeds the latest industry standards
- Twice the bandwidth throughput of multimode cable

### System Requirements

- Any fiber optic hardware or NIC card requiring singlemode duplex cable with LC/SC connectors

### Package Includes

- 10-meter Duplex Singlemode Fiber Patch Cable, LC/SC

Clad Diameter (microns)	125
Core Diameter (microns)	9
Number of Fibers	2
Cable Length (ft.)	32.8
Cable Length (m)	10.00
Cable Length (in.)	393.7
Minimum Bend Radius	20 mm (Dynamic); 10 mm (Static)
Shipping Dimensions (hwd / in.)	9.00 x 7.00 x 0.75
Shipping Dimensions (hwd / cm)	22.86 x 17.78 x 1.90
Shipping Weight (lbs.)	0.10
Shipping Weight (kg)	0.05
Fiber Cable Length	10M (32.8 ft)
<b>ENVIRONMENTAL</b>	
Operating Temperature Range	-4° to 140°F (-20° to 60°C)
Storage Temperature Range	-4° to 140°F (-20° to 60°C)
Operating Humidity Range	5% to 85% RH, Non-Condensing
Storage Humidity Range	35% to 65% RH, Non-Condensing
<b>COMMUNICATIONS</b>	
Network Compatibility	1 Gbps (Gigabit); 10 Gbps; 25 Gbps; 40 Gbps; 100 Gbps; 400 Gbps
Attenuation @ 1310NM	0.36 dB/km
Attenuation @ 1550NM	0.22 dB/km
Insertion Loss	0.30 dB
<b>CONNECTIONS</b>	
Side A - Connector 1	LC DUPLEX (MALE)
Side B - Connector 1	SC DUPLEX (MALE)
Endface Polish	UPC
<b>FEATURES &amp; SPECIFICATIONS</b>	
Push/Pull Tabs	No
Breakout	No
Trunk	No
<b>STANDARDS &amp; COMPLIANCE</b>	
Product Compliance	RoHS; REACH

**WARRANTY & SUPPORT**

Product Warranty Period  
(Worldwide)

Lifetime limited warranty