



L.T.F.

## DOB AC Line Voltage LED Boards



### Dimmable 45W Round 300mm (OD) QLUXDOBAR30045W123LED DOB Series

## QLUX DOB



<b>Wattage</b>	45W
<b>Power Factor</b>	0.9935
<b>CRI</b>	94.8
<b>CCT Options</b>	2700K - 4000K
<b>Luminous Flux</b>	≈ 4174 lm
<b>Efficacy</b>	≈ 90.5 lm/W
<b>Number of LEDs</b>	123
<b>Beam Angle</b>	160°
<b>Dimensions</b>	300mm OD
<b>Dimming</b>	ELV & Triac Optional 0-10V



RoHS



## FEATURES

- Driver On Board technology - No external LED driver required.
- CCT options 2700K - 4000K.
- Superior color rendering ≈ 94.8 CRI .
- High efficacy lumen output up to ≈ 90.5 lm/W.
- LM-80 compliant LEDs.
- Tight binning 3 step Mac Adam Ellipses.
- Uniform & crisp light source intensity.
- Hot spot free design.
- California Title 24 Compliant.
- Extra thin low profile.
- Low heat generation, easy thermal management.
- Easy to fit in new design or retrofit applications.
- 277V AC option available.
- L70 > 60,000 Hours

NOTE: Measurements based on 3000K CCT model.

## APPLICATIONS

- Residential and Commercial
- New or Retrofit OEM Fixtures

## ELECTRICAL SPECIFICATIONS

Model #	Input	Wattage	CCT Options	Luminous Flux
QLUXDOBAR30045W123LED927	120V AC 0.384A 50/60Hz	45W	2700K	≈ 4139 lm
QLUXDOBAR30045W123LED930			3000K	≈ 4174 lm
QLUXDOBAR30045W123LED935			3500K	≈ 4200 lm
QLUXDOBAR30045W123LED940			4000K	≈ 4220 lm



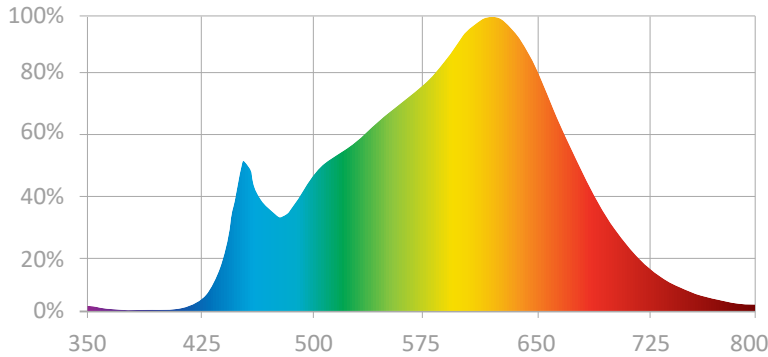
**L.T.F.**

## DOB AC Line Voltage LED Boards



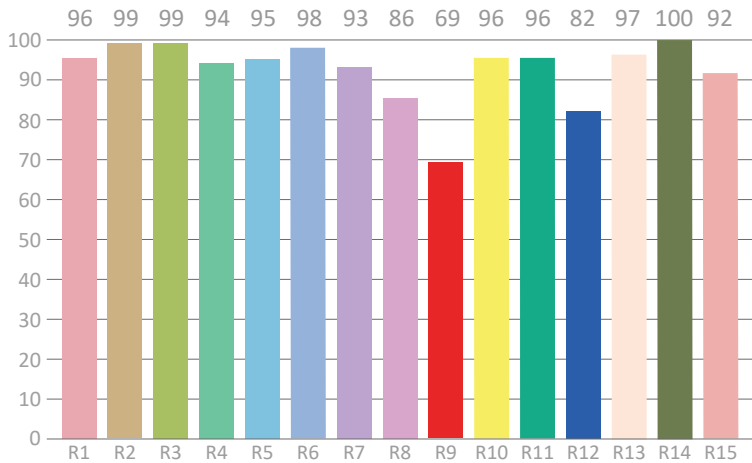
### Dimmable 45W Round 300mm (OD) QLUXDOBAR30045W123LED DOB Series

#### SPECTRORADIOMETRIC CHARACTERISTICS - 3000K



**Luminous Flux:** 4174.07 lm  
**Radiant Flux:** 14.865 W  
**Efficacy:** 90.5 lm/W  
**Nominal CCT:** ANSI\_F3000K  
 $x_0=0.4400$   $y_0=0.4030$   
**Chromaticity Coordinates:**  
 $x=0.4304$   $y=0.4057$   $u'=0.2457$   $v'=0.5211$   
**Chromaticity Difference:** +0.00161 Duv  
**CCT:** 3126 K

#### CRI TEST RESULTS - 3000K



**Color Rendering Index (CRI):** 94.8  
**Dominant Wavelength:** 580.0 nm(E)  
**Peak Wavelength:** 625nm  
**Colour Fidelity Index:** Rf=89  
**Gamut Index:** Rg=96  
**Color Purity:** 0.5116  
**Color Ratio:** Kr=42.7% Kg=48.2% Kb=9.1%  
**Bandwidth:** 174.1nm  
**Photosynthetically Active Radiation (PAR):** 14.02W  
**Photosynthetic Photon Flux (PPF):** 68.82  $\mu\text{mol/s}$

R1=96	R2=99	R3=99	R4=94	R5=95	R6=98	R7=93	R8=86
R9=69	R10=96	R11=96	R12=82	R13=97	R14=100	R15=92	Re=93

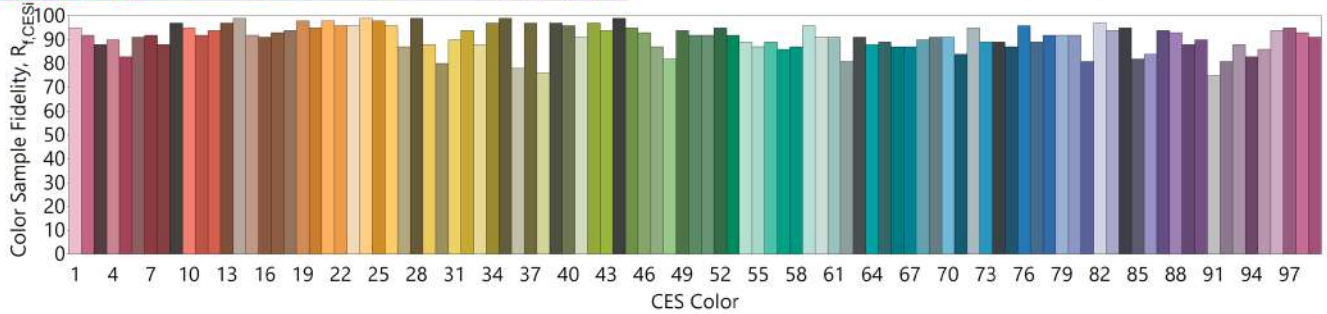
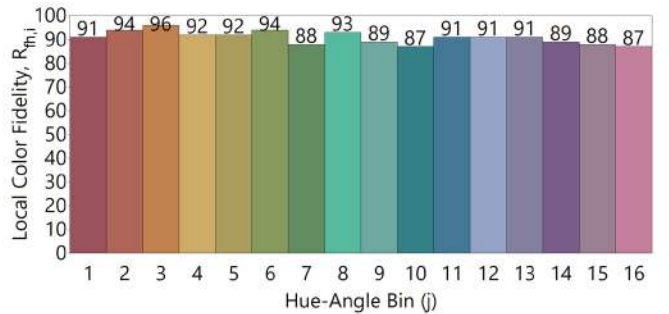
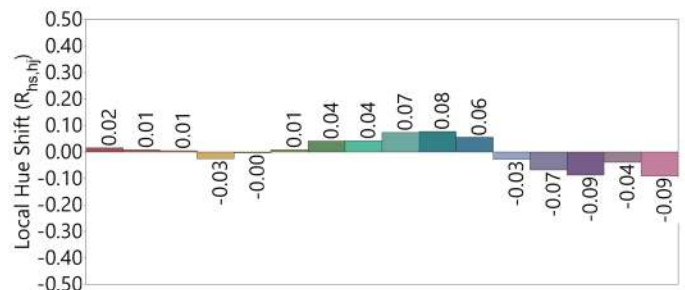
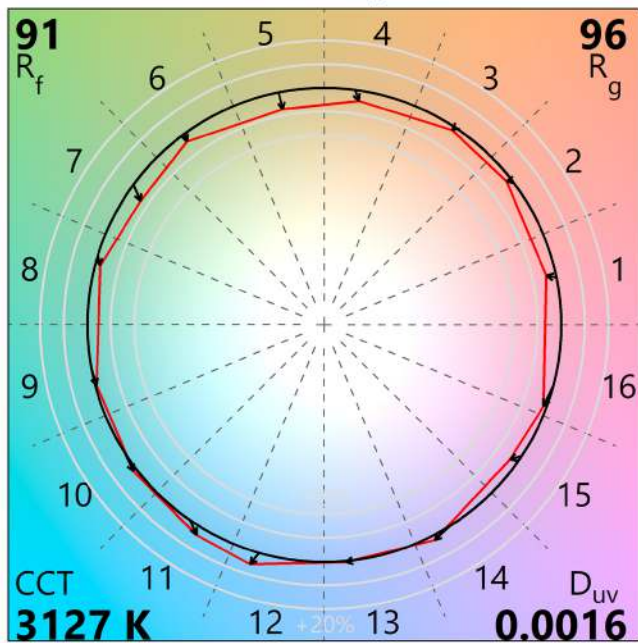
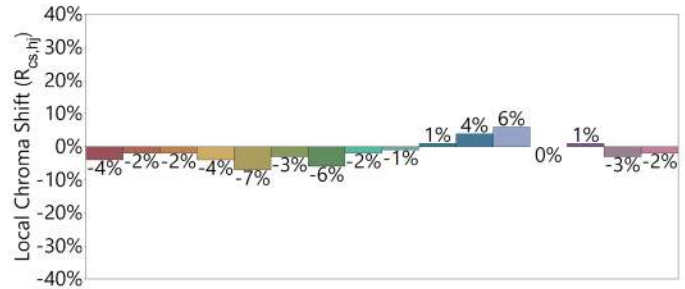
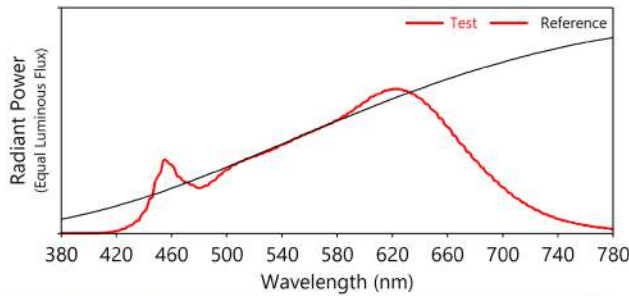


**L.T.F.**

**DOB AC Line Voltage LED Boards**

**Dimmable 45W Round 300mm (OD)  
QLUXDOBAR30045W123LED DOB Series**

**IES TM-30-18 Test Results - 3000K**





**L.T.F.**

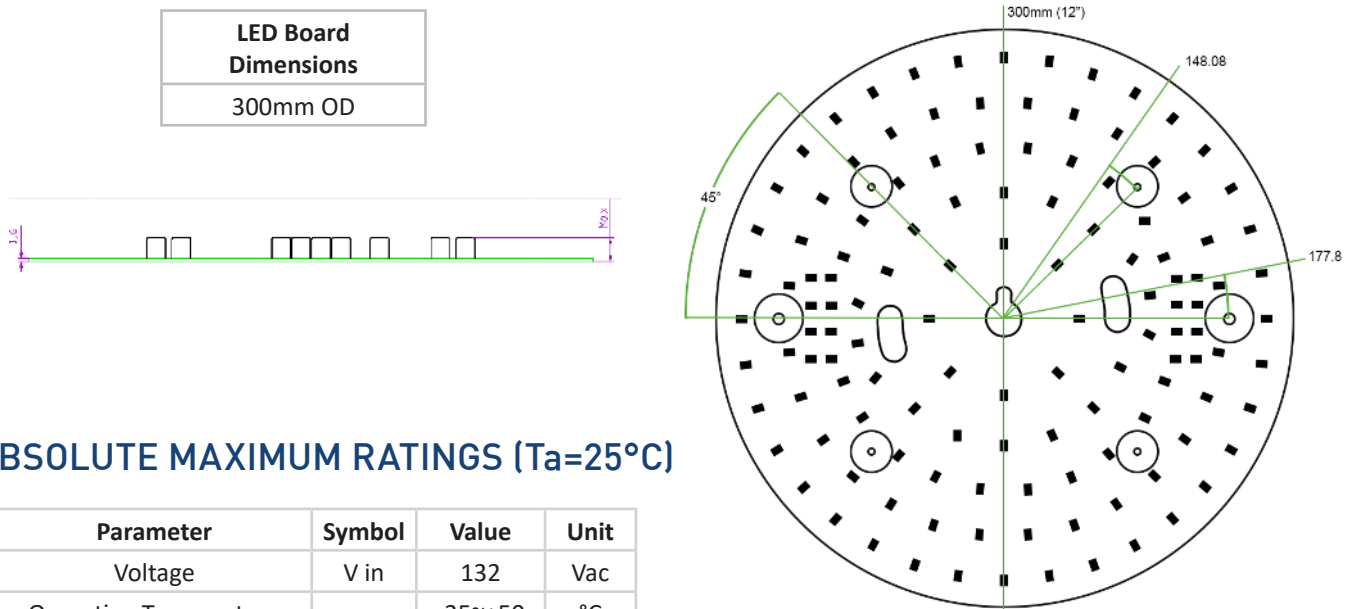
## DOB AC Line Voltage LED Boards

**Dimmable 45W Round 300mm (OD)  
QLUXDOBAR30045W123LED DOB Series**

### PERCENT FLICKER WHEN TRIAC DIMMING AT 120V AC, 60Hz

Dimmer		Percent Flicker		Flicker Index	
Brand	Model	@ 100% dim	@ 20% dim	@ 100% dim	@ 20% dim
Lutron	CT-600P	18.6%	20.9%	0.048	0.053
	CTCL-153P	17.9%	21.4%	0.049	0.054
	DVCL-153P	18.2%	22.5%	0.051	0.055
	MACL-153M	19.2%	23.6%	0.053	0.060
	S-600P	18.6%	26.0%	0.052	0.060
	S-603P	18.4%	21.2%	0.047	0.052
	SCL-153P	17.6%	21.1%	0.049	0.054
	TGCL-153P	19.3%	23.5%	0.050	0.057
Leviton	6631	18.4%	24.4%	0.048	0.057
	6674	17.2%	24.4%	0.046	0.053
	IPL06	18.5%	24.9%	0.050	0.056

### MECHANICAL SPECIFICATIONS



### ABSOLUTE MAXIMUM RATINGS (Ta=25°C)

Parameter	Symbol	Value	Unit
Voltage	V in	132	Vac
Operating Temperature	---	-35~+50	°C
LED Solder Temperature	Ts	110	°C
Storage Temperature	Tstg	-40~+100	°C
ESD Sensitivity (HBM)	---	±4000	V
Surge	---	2500	Vac