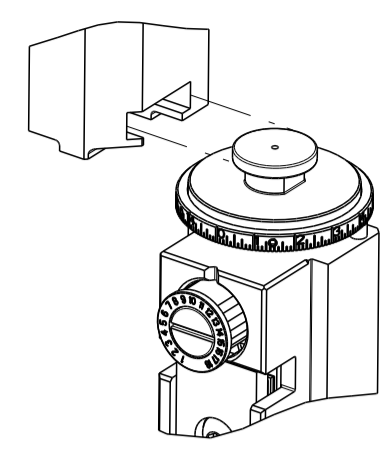


| PART NUMBER | REVISION | DESCRIPTION | FEED TYPE |
|-------------|----------|----------------------------------|------------|
| 2150490-1 | D | FINE CRIMP HEIGHT ADJUST | MECHANICAL |
| 2150490-2 | E | FINE CRIMP HEIGHT ADJUST | PNEUMATIC |
| 7-2150490-1 | D | MECHANICAL AND CRIMP TOOLING KIT | MECHANICAL |
| 7-2150490-2 | E | PNEUMATIC AND CRIMP TOOLING KIT | PNEUMATIC |
| 7-2150490-7 | A | CRIMP TOOLING KIT | - |

ATLANTIC VERSION TERMINATOR INTERFACE ADAPTER



| APPLICATOR DATA | | |
|--------------------------------------|----------------|------|
| CRIMP | SIZE | TYPE |
| WIRE | 2.79 mm [.110] | F |
| INSUL | 3.81 mm [.150] | OV |
| APPLICATOR INSTRUCTIONS 408-35043 | | |

| | |
|---|---|
| TERMINAL DATA: YAZAKI TERMINAL YAZAKI CRIMP SPECIFICATION | |
| TERMINAL NAME: .250 FAST-ON TYPE RECEPTACLE | |
| WIRE STRIP LENGTH 5.00-5.50 mm [.197-.217 IN] | INSULATION DIAMETER RANGE Ø1.60-3.00 mm [.063-.118 IN] |
| TERMINAL APPLICATION SPECIFICATION YPES 72-WT10-115-1 | |
| TERMINALS APPLIED | |
| TE TERMINAL 1572413-1 | YAZAKI TERMINAL 7116-2090(TF0497) |
| TE TERMINAL 1572413-2 | YAZAKI TERMINAL 7116-2090-02 |

| WIRE SIZE | CRIMP HEIGHT mm [INCH] | CRIMP HEIGHT REFERENCE SETTING |
|---|-------------------------------|--------------------------------|
| 14 AWG OR 2.00mm ² | 1.45 +/- 0.05 [.057 +/- .002] | 7.9 |
| 1.50mm ² | 1.40 +/- 0.05 [.055 +/- .002] | 8.5 |
| 16 AWG OR 1.25mm ² | 1.35 +/- 0.05 [.053 +/- .002] | 9.4 |
| (2) 0.5mm ² or 1mm ² | 1.30 +/- 0.05 [.051 +/- .002] | 9.9 |
| 18AWG, 0.85mm ² , or 0.75mm ² | 1.20 +/- 0.05 [.047 +/- .002] | 10.8 |

- RECOMMENDED SPARE PARTS
- REFER TO SUPPLIED INSTRUCTION SHEET FOR CLEANING, LUBRICATION AND STORAGE OF APPLICATOR.
- APPLY PART NUMBER 2-23419-6 LOCTITE TO THREADS OF ITEM 242. APPLY PART NUMBER 1-23419-5 LOCTITE TO THREADS OF ITEM 180.
- CRIMP HEIGHT REFERENCE SETTING WAS THE SETTING USED WHEN THE APPLICATOR WAS QUALIFIED AT THE FACTORY. ADJUSTMENT MAY BE NECESSARY WHEN RUNNING APPLICATOR IN THE FIELD.
- TERMINAL LUBRICANT IS RECOMMENDED.
- UNLESS SPECIFIED OTHERWISE TORQUE VALUES SHALL BE USED PER DOCUMENT, 101-35000.

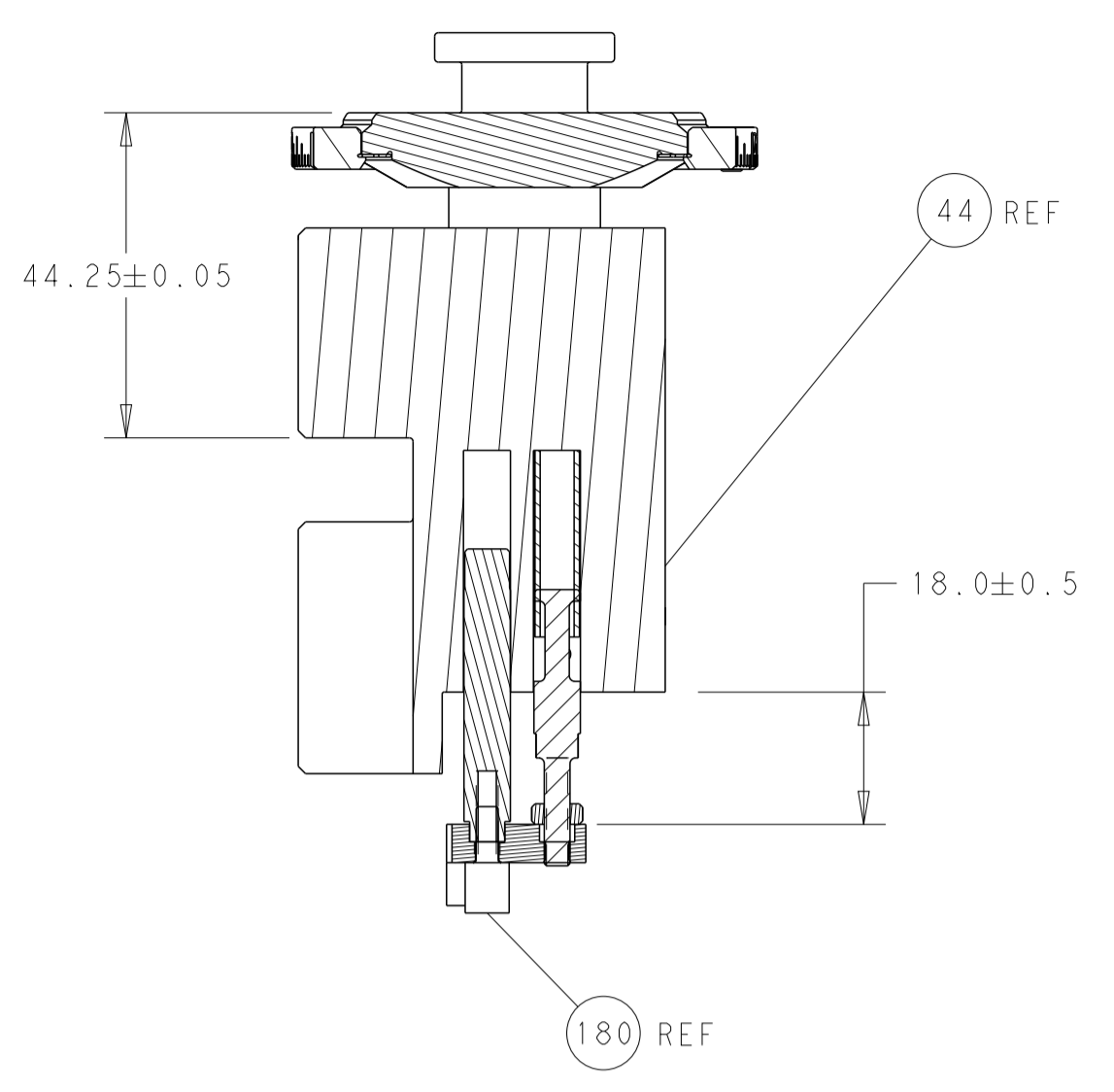
ATLANTIC VERSION
 Shown on sheets 1 of 4 & 2 of 4
 (Pacific version shown on sheets 3 of 4 & 4 of 4)

| LOC | DIST | REVISIONS | | | | | |
|-----|------|-----------|-----|---------------|-----------|-----|------|
| A | 66 | P | LTN | DESCRIPTION | DATE | OWN | APVD |
| | | B | | ECR-17-003065 | 02MAR2017 | TB | TE |
| | | C | | ECR-18-019011 | 04DEC2018 | RK | TE |
| | | D | | ECR-19-007107 | 03MAY2019 | TB | CT |
| | | E | | ECR-22-139975 | 22MAY2022 | TB | RK |

| | | | | | | | |
|---|-----|-----|-----|-----|-------------|-------------------------------------|-------------|
| - | 1 | - | 1 | - | 2119641-1 | FEED CAM, AIR FEED | 248 |
| - | 1 | 1 | 1 | 1 | 2119082-7 | CAM, SNAIL, INSULATION ADJUSTMENT | 244 |
| - | 1 | 1 | 1 | 1 | 2079764-1 | WASHER, WAVE SPRING, CREST-TO-CREST | 243 |
| 3 | - | 1 | 1 | 1 | 2119083-1 | RETAINER, INSULATION DIAL | 242 |
| - | - | 1 | - | 1 | 2119580-1 | MECHANICAL FEED ASSEMBLY | 239 |
| - | 1 | - | 1 | - | 2844940-3 | AIR FEED MODULE | 238 |
| - | 1 | 1 | 1 | 1 | 1-18028-0 | WASHER, FLAT, REG M8 | 192 |
| 3 | - | 1 | 1 | 1 | 1-1752354-2 | STANDOFF, HOLD-DOWN | 180 |
| - | 1 | 1 | 1 | 1 | 6-993111-6 | PIN, SLOTTED SPRING 3.0 X 14.0 | 177 |
| - | 1 | 1 | 1 | 1 | 8-22280-7 | SPRING, COMPRESSION | 176 |
| - | 1 | 1 | 1 | 1 | 1752353-2 | GUIDE PIN, HOLD-DOWN | 175 |
| - | 1 | 1 | 1 | 1 | 1901680-2 | GUIDE PIN, HOLD-DOWN | 174 |
| - | REF | REF | REF | REF | 994970-2 | COUNTER, MAGNETIC | 164 |
| 5 | - | 1 | 1 | 1 | 2119955-2 | ASSY, LUBRICATOR, END FEED | 84 |
| - | 1 | 1 | 1 | 1 | 455888-5 | SPACER, CRIMPER | 82 |
| - | 1 | 1 | 1 | 1 | 1803607-4 | DOCUMENTATION PACKAGE | 71 |
| - | 2 | 2 | 2 | 2 | 2-18032-2 | SCR, SET, FLT PNT, M3 X 10.0 | 70 |
| - | 1 | 1 | 1 | 1 | 2119740-1 | TAG, IDENTIFICATION | 67 |
| - | 2 | 2 | 2 | 2 | 2168078-1 | SCREW, DRIVE, RH, RoHS, 2 x .188 | 66 |
| - | 1 | 1 | 1 | 1 | 1901681-1 | HOLD-DOWN, TERMINAL | 65 |
| - | 2 | 2 | 2 | 2 | 2168400-5 | SHCS, LOW HEAD, RoHS, M4 X 20 | 64 |
| - | 1 | 1 | 1 | 1 | 2168083-2 | SCR, SKT HD CAP, RoHS, M4 X 8.0 | 60 |
| - | 1 | 1 | 1 | 1 | 5-18022-5 | SCR, HEX HD CAP, M4 X 6.0 | 59 |
| - | - | 1 | - | 1 | 2063961-1 | FEED FINGER | 58 |
| - | 3 | 3 | 3 | 3 | 2168400-4 | SHCS, LOW HEAD, RoHS, M4 X 8 | 57 |
| - | 2 | 2 | 2 | 2 | 1-2168083-0 | SCR, SKT HD CAP, RoHS, M4 X 10 | 56 |
| - | 2 | 2 | 2 | 2 | 5018030-1 | NUT, HEX, REG, RoHS, M3 | 54 |
| - | 2 | 2 | 2 | 2 | 986965-8 | NUT, LOCK, HEX, TORQUE (M4) | 53 |
| - | 1 | 1 | 1 | 1 | 1-5018030-0 | NUT, HEX, REG, RoHS, M3.5 | 52 |
| - | 1 | - | 1 | - | 2063961-1 | FEED FINGER | 51 |
| - | 1 | 2 | 1 | 2 | 18023-9 | SCR, SKT HD CAP M4 X 6.0 | 49 |
| - | - | 1 | - | 1 | 2119652-1 | FEED CAM, PRE FEED | 48 |
| - | - | 1 | - | 1 | 2119653-1 | FEED CAM, POST FEED | 47 |
| - | 1 | 1 | 1 | 1 | 2119655-5 | APPLICATOR BASIC ASSEMBLY, EF | 46 |
| - | 1 | 1 | 1 | 1 | 1803517-1 | RAM ASSEMBLY, EF ATLANTIC | 44 |
| - | 1 | 1 | 1 | 1 | 1803602-1 | SCR, BHSC, RoHS (M8 X 25) | 41 |
| - | 7 | 7 | 7 | 7 | 1-18028-2 | WASHER, FLAT, REG M4 | 33 |
| - | 2 | 2 | 2 | 2 | 2168083-9 | SCR, SKT HD CAP, RoHS, M4 X 20 | 31 |
| - | 2 | 2 | 2 | 2 | 2168083-2 | SCR, SKT HD CAP, RoHS, M4 X 8.0 | 29 |
| - | 1 | 1 | 1 | 1 | 240639-1 | STRIPPER (MACHINING) | 27 |
| - | 2 | 2 | 2 | 2 | 1-2168083-5 | SCR, SKT HD CAP, RoHS, M4 X 30 | 25 |
| - | 1 | 1 | 1 | 1 | 1-1752371-0 | PLATE, STRIP GUIDE | 24 |
| - | 1 | 1 | 1 | 1 | 240825-1 | PLATE, STRIP HOLD DOWN | 23 |
| - | 2 | 2 | 2 | 2 | 2-22281-3 | SPRING, COMPRESSION | 22 |
| - | 1 | 1 | 1 | 1 | 1803292-4 | DRAG | 20 |
| - | 2 | 2 | 2 | 2 | 1901259-5 | GUIDE, LOWER STRIP | 18 |
| - | 4 | 4 | 4 | 4 | 1-2079383-1 | SCR, BHSC, RoHS (M6 X 12) | 17 |
| - | 1 | 1 | 1 | 1 | 6-240641-4 | SPACER | 16 |
| - | 1 | 1 | 1 | 1 | 1752360-1 | SPACER, HOLD-DOWN | 13 |
| 1 | - | 1 | 1 | 1 | 240833-3 | PLATE, REAR SHEAR | 11 |
| - | - | - | - | - | - | - | 10 |
| 1 | - | 1 | 1 | 1 | 6-690482-7 | PLATE, FRONT SHEAR | 9 |
| 1 | 1 | 2 | 2 | 1 | 1-1803060-6 | ANVIL, COMBINATION, END FEED | 8 |
| 1 | - | 1 | 1 | 1 | 1-2217206-3 | BLADE, SLUG | 7 |
| - | - | - | - | - | - | - | 6 |
| - | 1 | 1 | 1 | 1 | 240641-3 | SPACER | 5 |
| - | 1 | 1 | 1 | 1 | 238011-2 | BLOCK, CRIMPER SPACER | 4 |
| 1 | 1 | 2 | 2 | 1 | 6-2119785-3 | CRIMPER, INSULATION OVERLAP PREMIUM | 3 |
| - | 1 | 1 | 1 | 1 | 455888-7 | SPACER, CRIMPER | 2 |
| 1 | 1 | 2 | 2 | 1 | 3-456408-3 | CRIMPER, WIRE PREMIUM | 1 |
| - | 77 | 72 | 71 | 2 | -1 | PART NO | DESCRIPTION |
| - | - | - | - | - | - | - | ITEM NO |

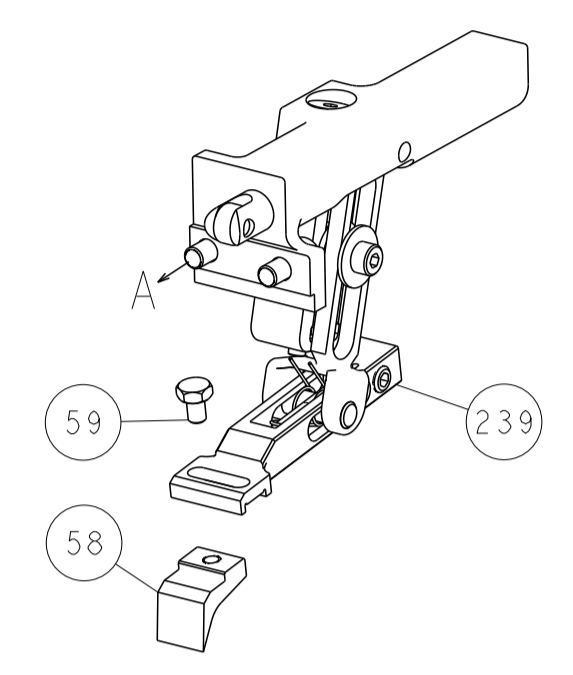
| | | | | | | | |
|--|--|--|--|--|--|--|--|
| DIMENSIONS: mm | | TOLERANCES UNLESS OTHERWISE SPECIFIED: | | OWN R. HUANG 19SEP2014 | | TE Connectivity Harrisburg, PA 17105-3608 | |
| 0 PLC ± | | 1 PLC ± | | CHK L. ZHANG 19SEP2014 | | NAME Ocean End Feed Applicator | |
| 2 PLC ± | | 3 PLC ± | | APVD J. GUO 19SEP2014 | | SIZE A1 | |
| 4 PLC ± | | ANGLES ± | | PRODUCT SPEC | | CAGE CODE 00779 | |
| FINISH | | MATERIAL | | APPLICATION SPEC | | DRAWING NO 2150490 | |
| WEIGHT | | RESTRICTED TO | | SCALE 1:1 | | SHEET 1 of 4 | |
| Customer Accessible Production Drawing | | REV E | | Customer Accessible Production Drawing | | SCALE 1:1 | |

| LOC | DIST | REVISIONS | | | | | |
|-----|------|-----------|-----|-------------|------|-----|------|
| A | 66 | P | LTM | DESCRIPTION | DATE | OWN | APVD |
| | | - | | SEE SHEET 1 | | | |

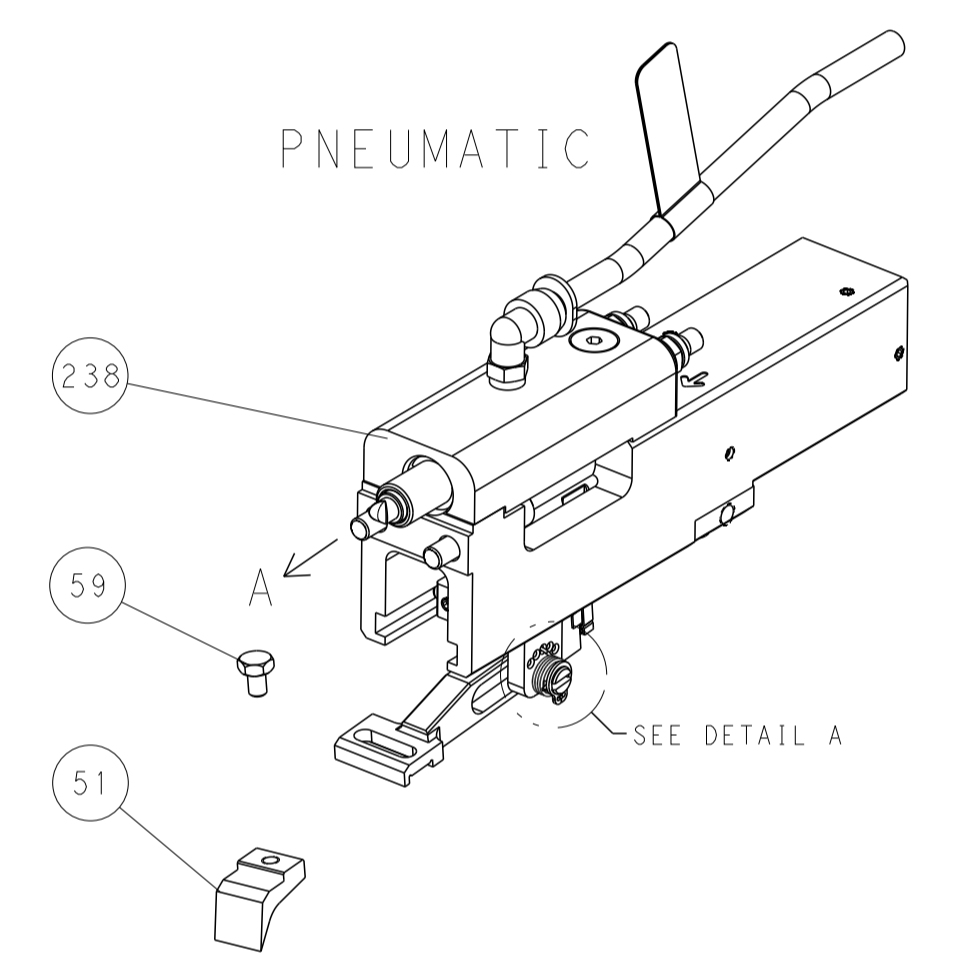


RAM AND HOLDDOWN SET-UP

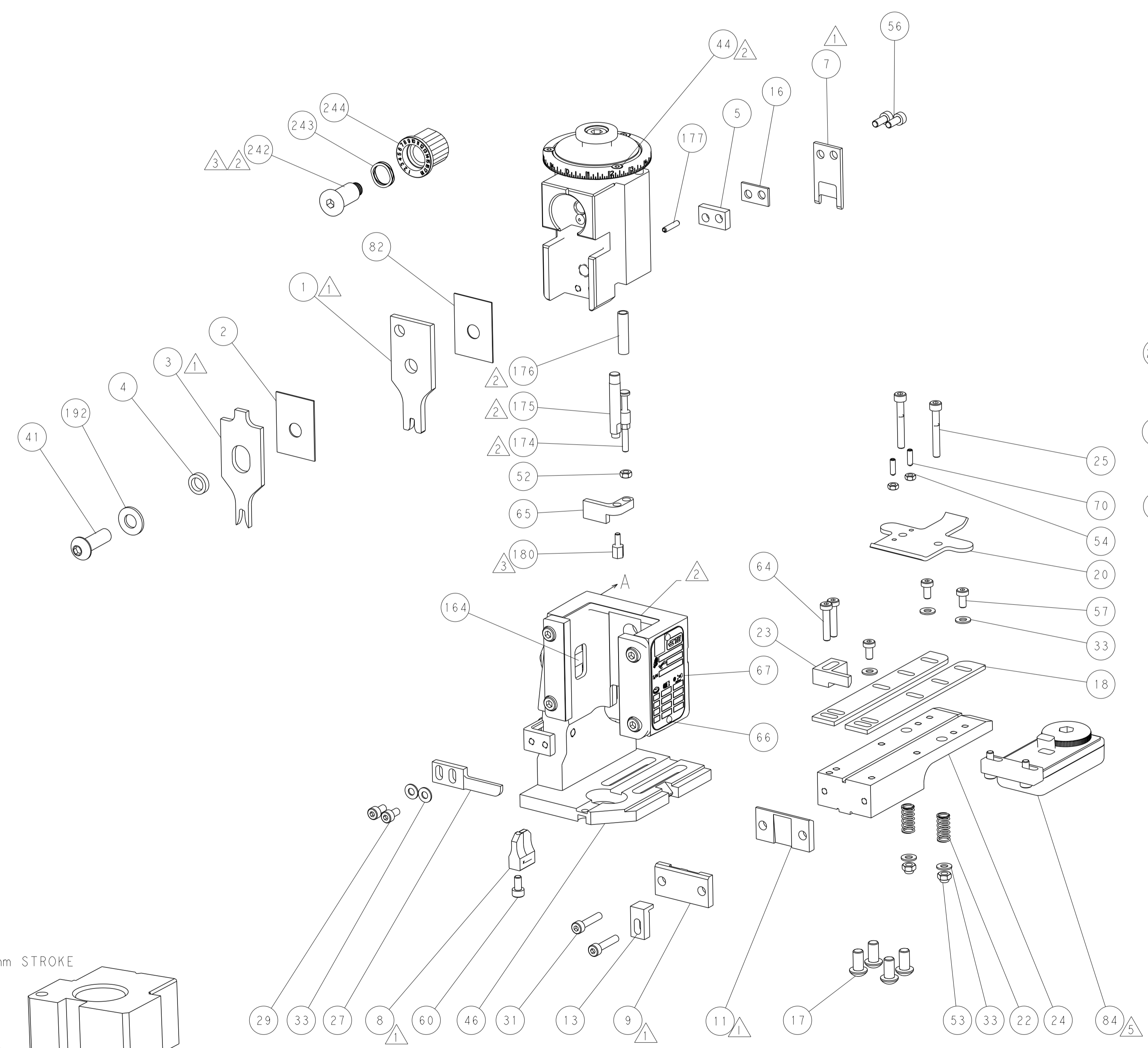
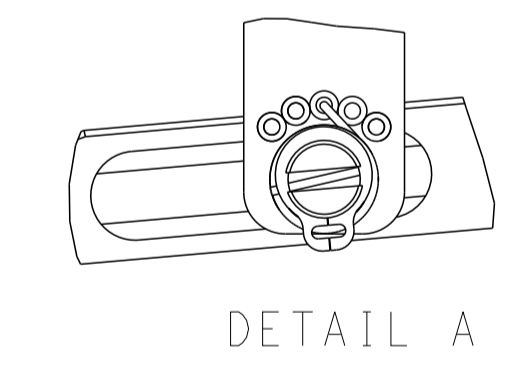
FEED TYPE
MECHANICAL



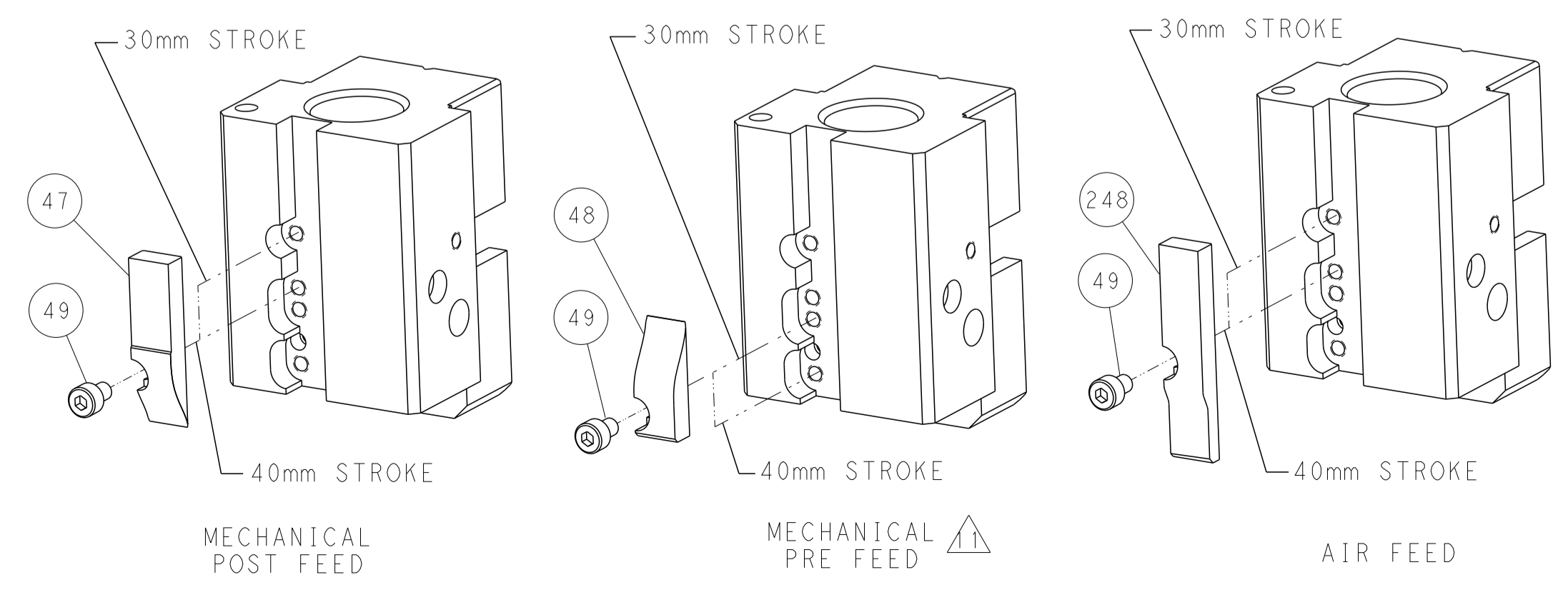
PNEUMATIC



FEED SPRING
SETTING POSITION



CAM POSITIONS

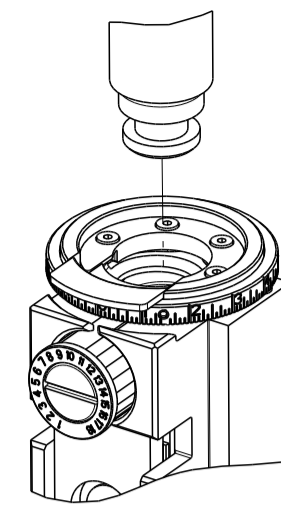


ATLANTIC VERSION
 Shown on sheets 1 of 4 & 2 of 4
 (Pacific version shown on sheets 3 of 4 & 4 of 4)

| | | | | | | | | | |
|-----------------------|--|---|--|---|--|---|--|---------------|--|
| DIMENSIONS: mm | | TOLERANCES UNLESS OTHERWISE SPECIFIED: 0 PLC ± 1 PLC ± 2 PLC ± 3 PLC ± 4 PLC ± ANGLES ± FINISH | | DWN K. HUANG 19SEP2014 CHK L. ZHANG 19SEP2014 APVD J. GUO 20MAR2014 PRODUCT SPEC APPLICATION SPEC WEIGHT Customer Accessible Production Drawing | | NAME Ocean End Feed Applicator SIZE CAGE CODE DRAWING NO A1 00779 C=2150490 SCALE 1:1 SHEET 2 OF 4 REV E | | RESTRICTED TO | |
|-----------------------|--|---|--|---|--|---|--|---------------|--|

| 8 | 7 | 6 | 5 | 4 | 3 | 2 | 1 |
|---|----------|--------------------------|------------|----|---|---|---|
| THIS DRAWING IS UNPUBLISHED. | | RELEASED FOR PUBLICATION | | 20 | | | |
| COPYRIGHT © BY TYCO ELECTRONICS CORPORATION. ALL RIGHTS RESERVED. | | | | | | | |
| PART NUMBER | REVISION | DESCRIPTION | FEED TYPE | | | | |
| 2-2150490-1 | D | FINE CRIMP HEIGHT ADJUST | MECHANICAL | | | | |
| 2-2150490-2 | E | FINE CRIMP HEIGHT ADJUST | PNEUMATIC | | | | |
| 7-2150490-7 | A | CRIMP TOOLING KIT | - | | | | |

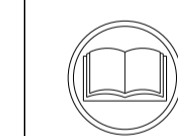
PACIFIC VERSION TERMINATOR
INTERFACE ADAPTER



| APPLICATOR DATA | | |
|--------------------------------------|------------------|------|
| CRIMP | SIZE | TYPE |
| WIRE | 2.79 mm [.110] | F |
| INSUL | 3.81 mm [.150] | OV |
| APPLICATOR INSTRUCTIONS 408-35043 | | |

| | | | |
|---|-------------------|---|-----------------|
| TERMINAL DATA: YAZAKI TERMINAL YAZAKI CRIMP SPECIFICATION | | | |
| TERMINAL NAME: .250 FAST-ON TYPE RECEPTACLE | | | |
| WIRE STRIP LENGTH 5.00-5.50 mm [.197-.217 IN] | | INSULATION DIAMETER RANGE Ø1.60-3.00 mm [.063-.118 IN] | |
| TERMINAL APPLICATION SPECIFICATION YVES 72-WT10-115-1 | | | |
| TERMINALS APPLIED | | | |
| TE TERMINAL | YAZAKI TERMINAL | TE TERMINAL | YAZAKI TERMINAL |
| 1572413-1 | 7116-2090(TF0497) | 1572413-2 | 7116-2090-02 |

| WIRE SIZE | CRIMP HEIGHT mm [INCH] | CRIMP HEIGHT REFERENCE SETTING |
|---|---------------------------------|--------------------------------|
| 14 AWG OR 2.00mm ² | 1.45 +/- 0.05 [.057 +/- .002] | 7.9 |
| 1.50mm ² | 1.40 +/- 0.05 [.055 +/- .002] | 8.5 |
| 16 AWG OR 1.25mm ² | 1.35 +/- 0.05 [.053 +/- .002] | 9.4 |
| (2) 0.5mm ² or 1mm ² | 1.30 +/- 0.05 [.051 +/- .002] | 9.9 |
| 18AWG, 0.85mm ² or 0.75mm ² | 1.20 +/- 0.05 [.047 +/- .002] | 10.8 |



- △ RECOMMENDED SPARE PARTS
 - △ REFER TO SUPPLIED INSTRUCTION SHEET FOR CLEANING, LUBRICATION AND STORAGE OF APPLICATOR.
 - △ APPLY PART NUMBER 2-23419-6 LOCTITE TO THREADS OF ITEM 242. APPLY PART NUMBER 1-23419-5 LOCTITE TO THREADS OF ITEM 180.
 - △ CRIMP HEIGHT REFERENCE SETTING WAS THE SETTING USED WHEN THE APPLICATOR WAS QUALIFIED AT THE FACTORY. ADJUSTMENT MAY BE NECESSARY WHEN RUNNING APPLICATOR IN THE FIELD.
 - △ TERMINAL LUBRICANT IS RECOMMENDED.
6. UNLESS SPECIFIED OTHERWISE TORQUE VALUES SHALL BE USED PER DOCUMENT, 101-35000.

***WARNING**
ON INSTALLATION, SET WIRE DISC TO CRIMP HEIGHT REFERENCE SETTING FOR LARGEST WIRE SIZE. CRIMP HEIGHT REFERENCE SETTINGS GREATER THAN THE VALUE SHOWN MAY CAUSE DAMAGE TO THE CRIMP TOOLING. REFER TO THE INSTRUCTION SHEET FOR PROPER SETUP AND ADJUSTMENTS.

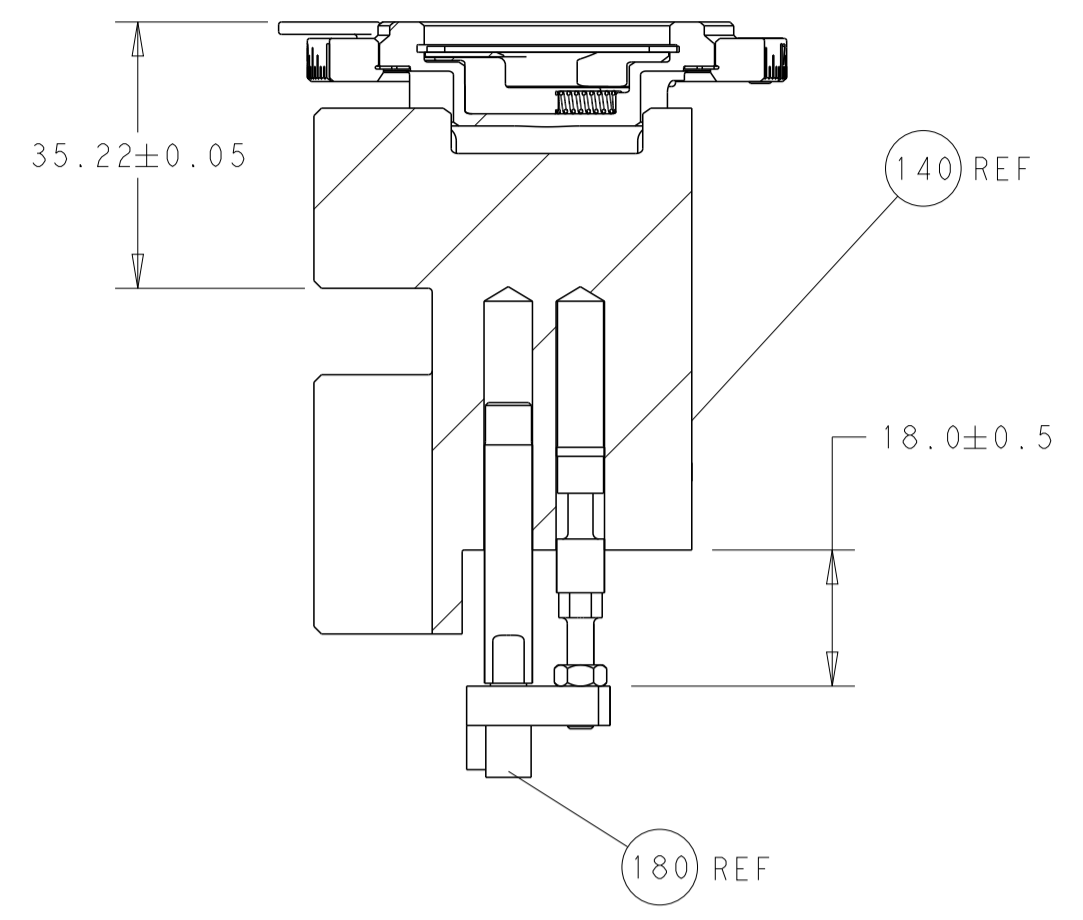
| LOC | DIST | REVISIONS | | | | | |
|-----|------|-----------|-----|-------------|------|-----|------|
| A | 66 | P | LTN | DESCRIPTION | DATE | OWN | APVD |
| | | - | - | SEE SHEET 1 | - | - | - |

| | | | | | | |
|---|---|-----|-----|-------------|-------------------------------------|---------|
| | - | 1 | 1 | 2119082-7 | CAM, SNAIL, INSULATION ADJUSTMENT | 244 |
| | - | 1 | 1 | 2079764-1 | WASHER, WAVE SPRING, CREST-TO-CREST | 243 |
| 3 | - | 1 | 1 | 2119083-1 | RETAINER, INSULATION DIAL | 242 |
| | - | - | 1 | 2119580-1 | MECHANICAL FEED ASSEMBLY | 239 |
| | - | 1 | - | 2844940-3 | AIR FEED MODULE | 238 |
| | - | 1 | 1 | 1-18028-0 | WASHER, FLAT, REG M8 | 192 |
| | - | 4 | 4 | 2079383-9 | SCR, BHSC, RoHS (M6 X 20) | 186 |
| 3 | - | 1 | 1 | 1-1752354-2 | STANDOFF, HOLD-DOWN | 180 |
| | - | 1 | 1 | 6-993111-6 | PIN, SLOTTED SPRING 3.0 X 14.0 | 177 |
| | - | 1 | 1 | 8-22280-7 | SPRING, COMPRESSION | 176 |
| | - | 1 | 1 | 1752353-2 | GUIDE PIN, HOLDDOWN | 175 |
| | - | 1 | 1 | 1901680-2 | GUIDE PIN, HOLDDOWN | 174 |
| | - | REF | REF | 994970-2 | COUNTER, MAGNETIC | 164 |
| | - | 1 | - | 2119641-2 | FEED CAM, AIR FEED | 152 |
| | - | 1 | 1 | 2168083-8 | SCR, SKT HD CAP, RoHS, M4 X 16 | 144 |
| | - | - | 1 | 2119653-2 | FEED CAM, POST FEED | 142 |
| | - | 1 | 1 | 2119655-6 | APPLICATOR BASIC ASSEMBLY, EF | 141 |
| | - | 1 | 1 | 1803518-1 | RAM ASSEMBLY, EF PACIFIC | 140 |
| 5 | - | 1 | 1 | 2119955-2 | ASSY, LUBRICATOR, END FEED | 84 |
| | - | 1 | 1 | 455888-5 | SPACER, CRIMPER | 82 |
| | - | 1 | 1 | 1803607-4 | DOCUMENTATION PACKAGE | 71 |
| | - | 2 | 2 | 2-18032-2 | SCR, SET, FLT PNT, M3 X 10.0 | 70 |
| | - | 1 | 1 | 2119740-1 | TAG, IDENTIFICATION | 67 |
| | - | 2 | 2 | 2168078-1 | SCREW, DRIVE, RH, RoHS, 2 x .188 | 66 |
| | - | 1 | 1 | 1901681-1 | HOLDDOWN, TERMINAL | 65 |
| | - | 2 | 2 | 2168400-5 | SHCS, LOW HEAD, RoHS, M4 X 20 | 64 |
| | - | 1 | 1 | 5-18022-5 | SCR, HEX HD CAP, M4 X 6.0 | 59 |
| | - | - | 1 | 2063961-1 | FEED FINGER | 58 |
| | - | 3 | 3 | 2168400-4 | SHCS, LOW HEAD, RoHS, M4 X 8 | 57 |
| | - | 2 | 2 | 1-2168083-0 | SCR, SKT HD CAP, RoHS, M4 X 10 | 56 |
| | - | 2 | 2 | 5018030-1 | NUT, HEX, REG, RoHS, M3 | 54 |
| | - | 2 | 2 | 986965-8 | NUT, LOCK, HEX, TORQUE (M4) | 53 |
| | - | 1 | 1 | 1-5018030-0 | NUT, HEX, REG, RoHS, M3.5 | 52 |
| | - | 1 | - | 2063961-1 | FEED FINGER | 51 |
| | - | 1 | 2 | 18023-9 | SCR, SKT HD CAP M4 X 6.0 | 49 |
| | - | - | 1 | 2119652-1 | FEED CAM, PRE FEED | 48 |
| | - | 1 | 1 | 1803602-1 | SCR, BHSC, RoHS (M8 X 25) | 41 |
| | - | 7 | 7 | 1-18028-2 | WASHER, FLAT, REG M4 | 33 |
| | - | 2 | 2 | 2168083-9 | SCR, SKT HD CAP, RoHS, M4 X 20 | 31 |
| | - | 2 | 2 | 2168083-2 | SCR, SKT HD CAP, RoHS, M4 X 8.0 | 29 |
| | - | 1 | 1 | 240639-1 | STRIPPER (MACHINING) | 27 |
| | - | 2 | 2 | 1-2168083-5 | SCR, SKT HD CAP, RoHS, M4 X 30 | 25 |
| | - | 1 | 1 | 1-1752371-0 | PLATE, STRIP GUIDE | 24 |
| | - | 1 | 1 | 240825-1 | PLATE, STRIP HOLD DOWN | 23 |
| | - | 2 | 2 | 2-22281-3 | SPRING, COMPRESSION | 22 |
| | - | 1 | 1 | 1803292-4 | DRAG | 20 |
| | - | 2 | 2 | 1901259-5 | GUIDE, LOWER STRIP | 18 |
| | - | 1 | 1 | 6-240641-4 | SPACER | 16 |
| | - | 1 | 1 | 1752360-1 | SPACER, HOLD-DOWN | 13 |
| 1 | - | 1 | 1 | 240833-3 | PLATE, REAR SHEAR | 11 |
| | - | - | - | - | - | 10 |
| 1 | - | 1 | 1 | 6-690482-7 | PLATE, FRONT SHEAR | 9 |
| 1 | 1 | 1 | 1 | 1-1803060-6 | ANVIL, COMBINATION, END FEED | 8 |
| 1 | - | 1 | 1 | 1-2217206-3 | BLADE, SLUG | 7 |
| | - | - | - | - | - | 6 |
| | - | 1 | 1 | 240641-3 | SPACER | 5 |
| | - | 1 | 1 | 238011-2 | BLOCK, CRIMPER SPACER | 4 |
| 1 | 1 | 1 | 1 | 6-2119785-3 | CRIMPER, INSULATION OVERLAP PREMIUM | 3 |
| | - | 1 | 1 | 455888-7 | SPACER, CRIMPER | 2 |
| 1 | 1 | 1 | 1 | 3-456408-3 | CRIMPER, WIRE PREMIUM | 1 |
| | - | 77 | 22 | 21 | PART NO | ITEM NO |

PACIFIC VERSION
Shown on sheets 3 of 4 & 4 of 4
(Atlantic version shown on sheets 1 of 4 & 2 of 4)

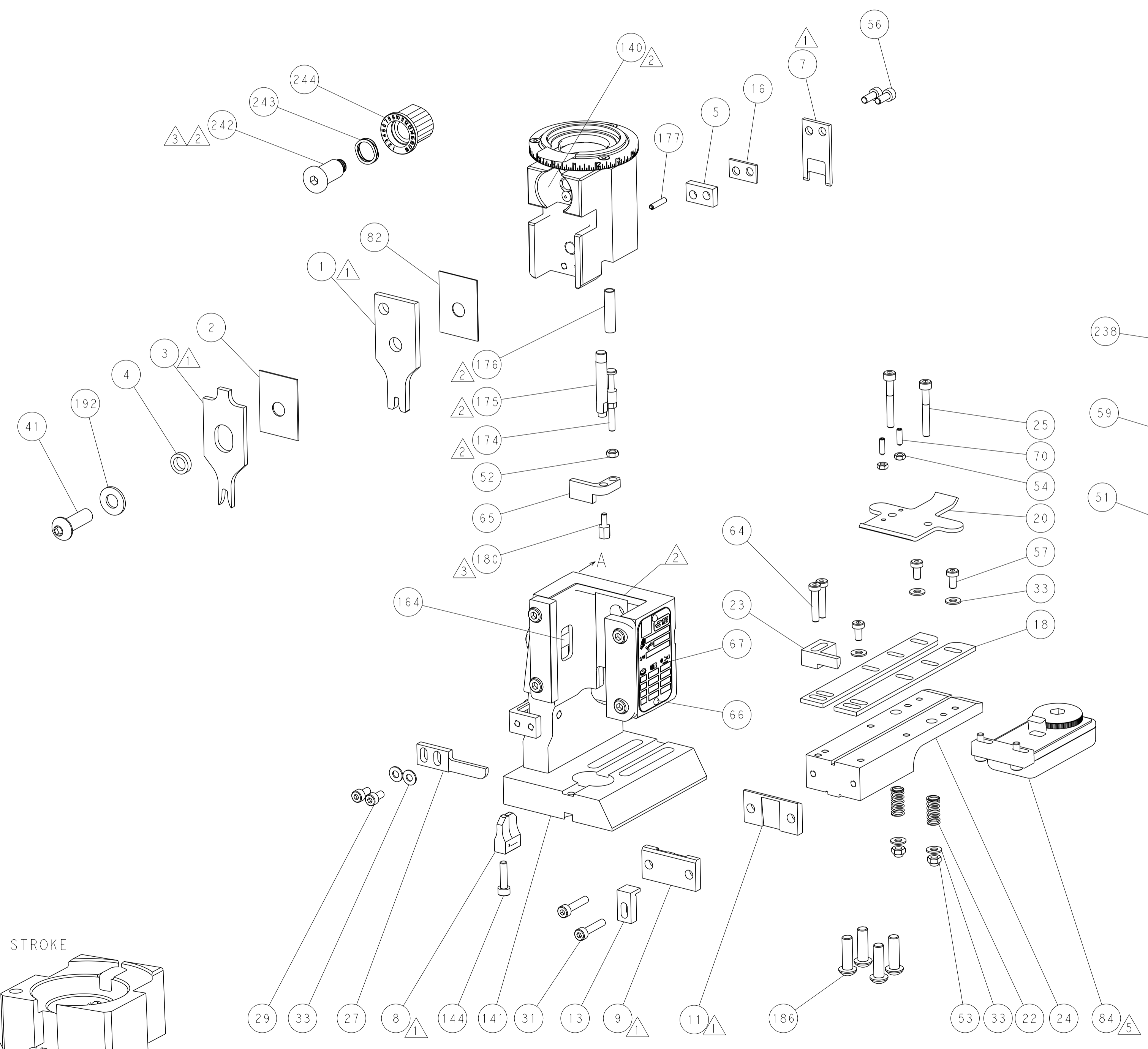
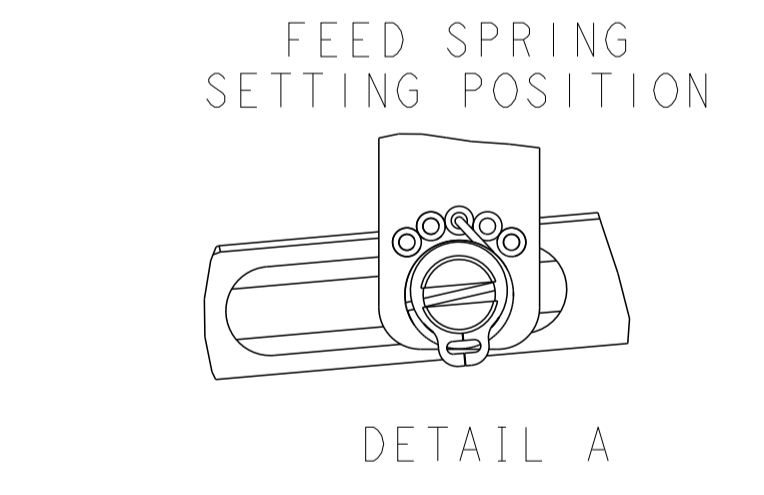
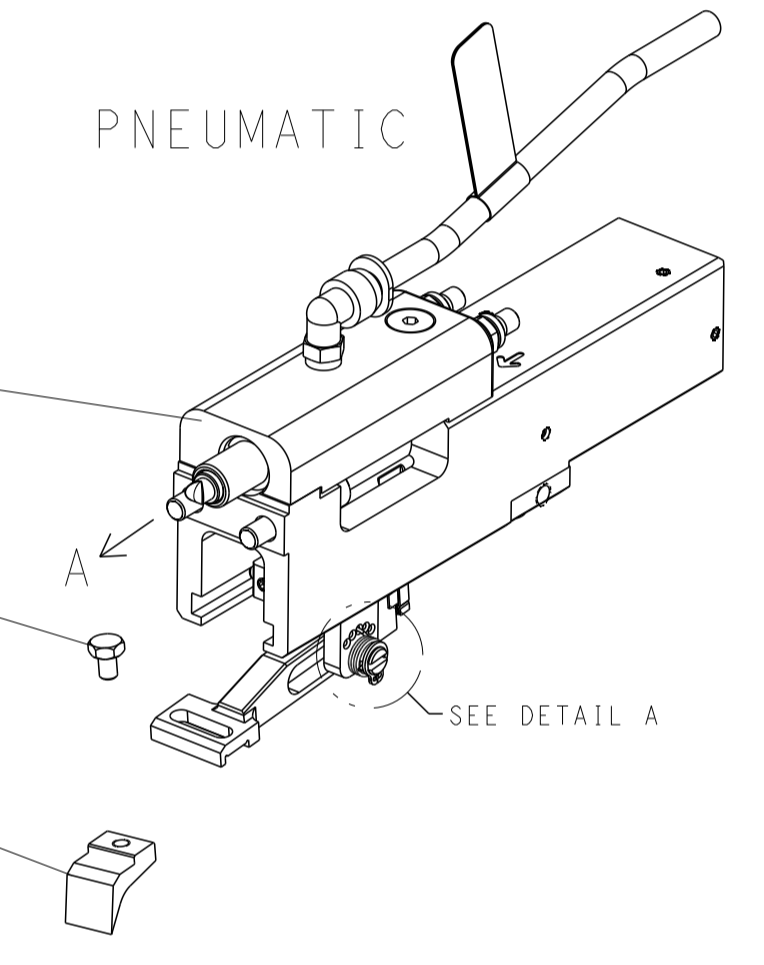
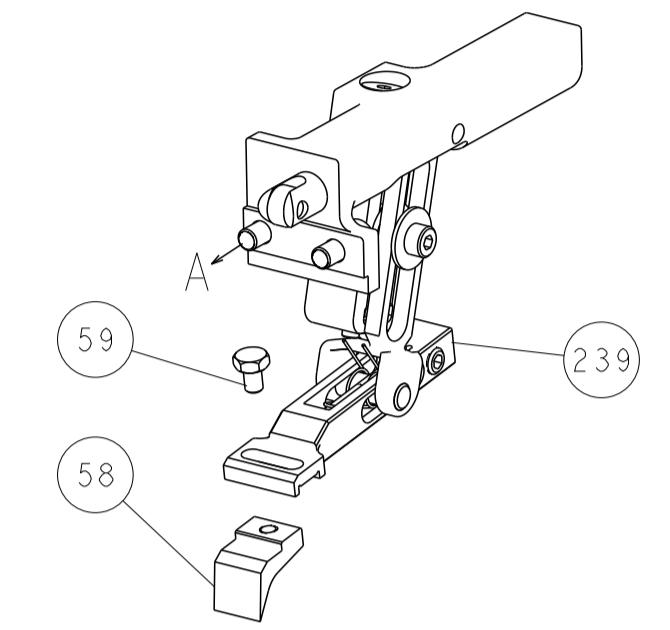
| | | | |
|--|---|---|--|
| <small>THIS DRAWING IS UNPUBLISHED. RELEASED FOR PUBLICATION. ALL RIGHTS RESERVED.</small> | | DWN: H. HUANG ZOMAR2014 CHK: L. ZHANG ZOMAR2014 APVD: J. GUO ZOMAR2014 | TE Connectivity Harrisburg, PA 17105-3608 |
| DIMENSIONS: mm | TOLERANCES UNLESS OTHERWISE SPECIFIED: 0 PLC ± 1 PLC ± 2 PLC ± 3 PLC ± 4 PLC ± ANGLES ± FINISH | NAME: Ocean End Feed Applicator SIZE: A1 CAGE CODE: 00779 DRAWING NO: 2150490 SCALE: 1:1 SHEET: 3 OF 4 REV: E | RESTRICTED TO: - Customer Accessible Production Drawing |

| LOC | | DIST | | REVISIONS | | | |
|-----|----|------|-----|-------------|------|-----|------|
| A | 66 | P | LTM | DESCRIPTION | DATE | DWN | APVD |
| | | - | | SEE SHEET 1 | | | |

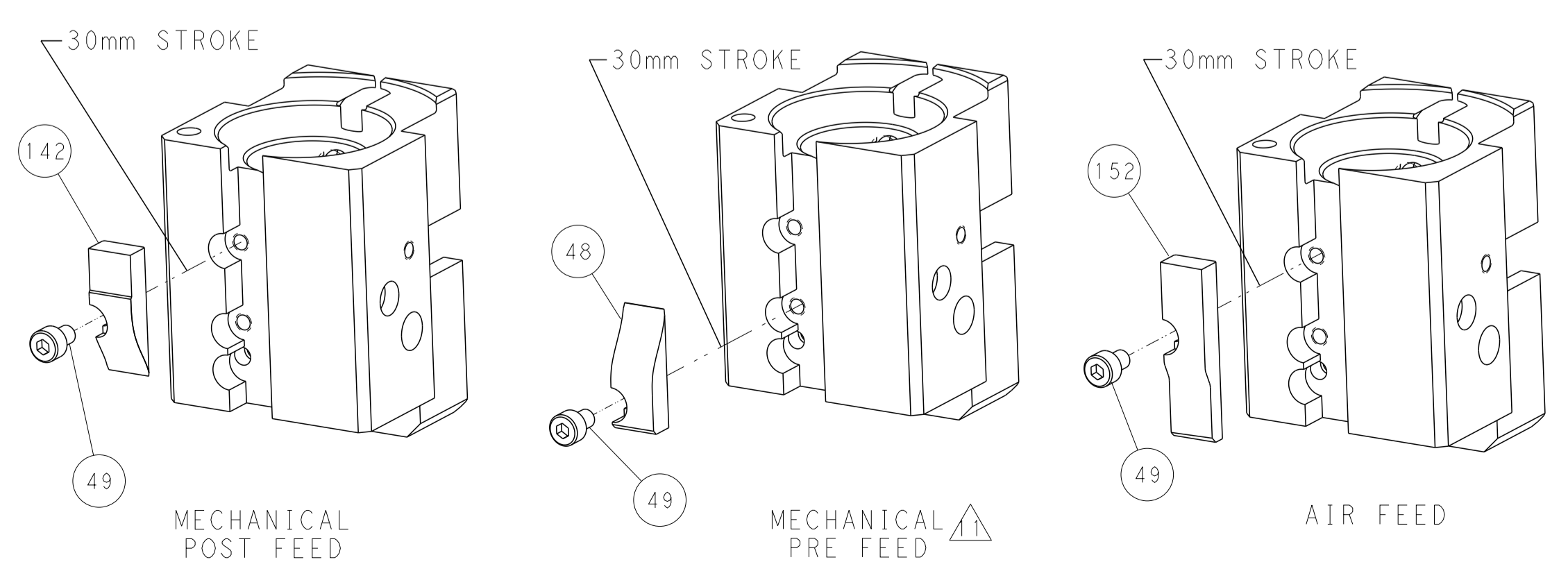


RAM AND HOLDDOWN SET-UP

FEED TYPE
MECHANICAL



CAM POSITIONS



PACIFIC VERSION
 Shown on sheets 3 of 4 & 4 of 4
 (Atlantic version shown on sheets 1 of 4 & 2 of 4)

| | | | | | | | |
|-------------|---------|--|---------|--|---------|------------------------------|---------------------------|
| DIMENSIONS: | | TOLERANCES UNLESS OTHERWISE SPECIFIED: | | DWN K. HUANG ZOMAR2014 | | STE TE Connectivity | |
| mm | 0 PLC ± | 1 PLC ± | 2 PLC ± | 3 PLC ± | 4 PLC ± | 5 PLC ± | Harrisburg, PA 17105-3608 |
| | ANGLES | FINISH | | CHK L. ZHANG ZOMAR2014 | | NAME | |
| MATERIAL | | | | APVD JJ. GUO ZOMAR2014 | | Ocean End Feed Applicator | |
| | | | | PRODUCT SPEC | | SIZE CAGE CODE DRAWING NO | |
| | | | | APPLICATION SPEC | | RESTRICTED TO | |
| | | | | WEIGHT | | A1 00779 C=2150490 | |
| | | | | Customer Accessible Production Drawing | | SCALE 1:1 SHEET 4 OF 4 REV E | |