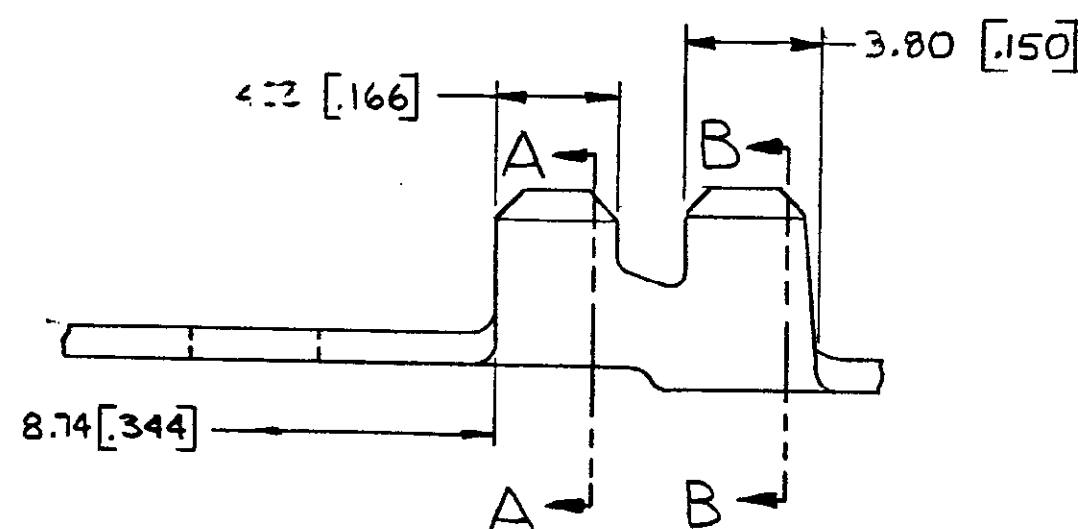
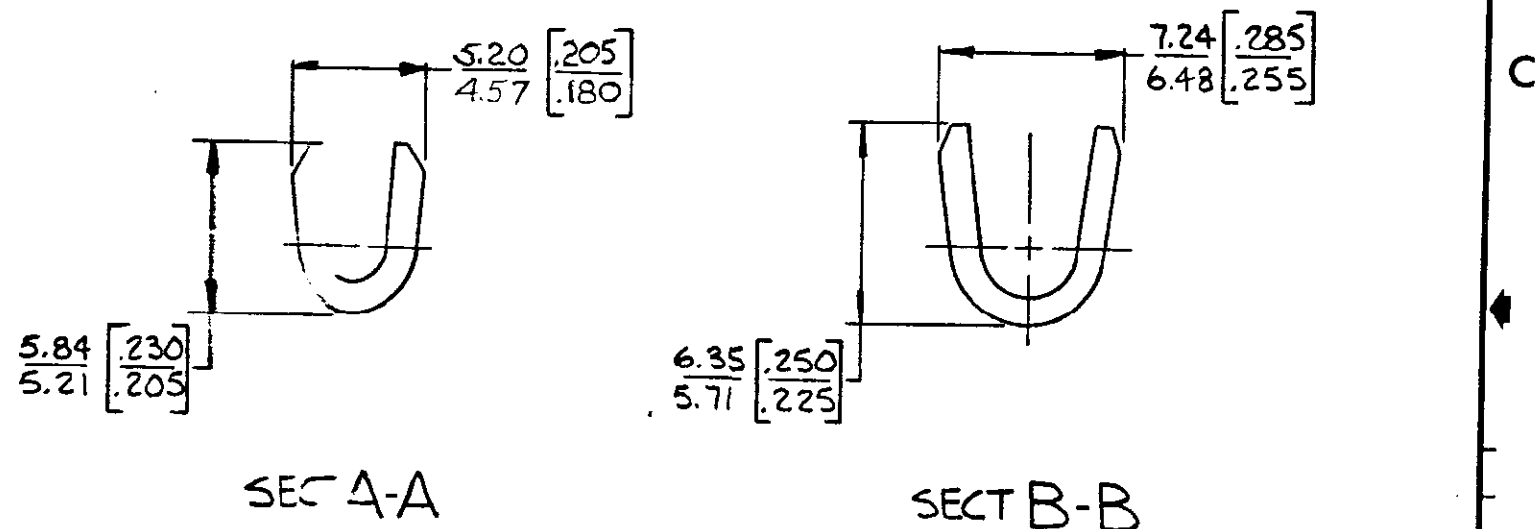
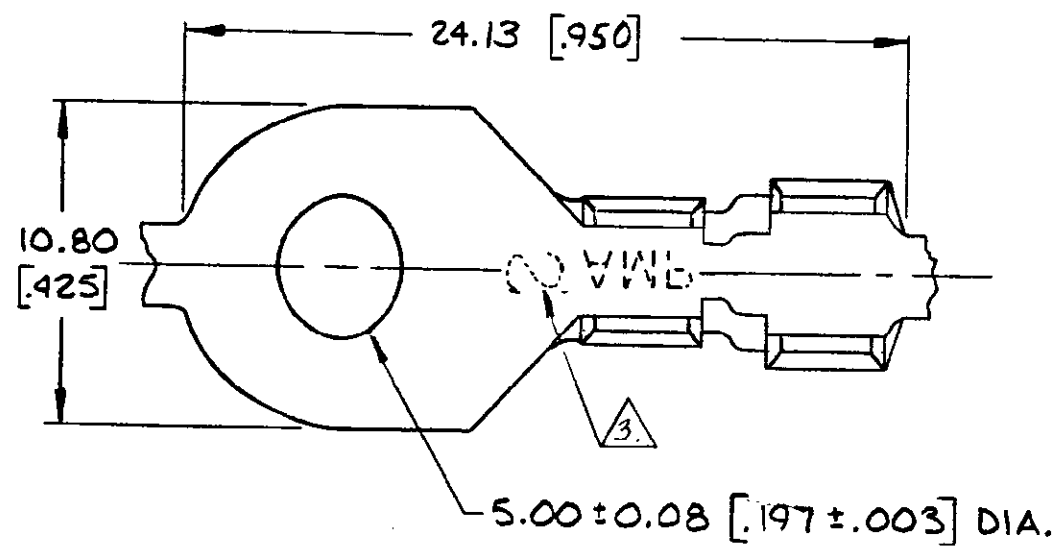


© COPYRIGHT 1964 BY AMP INCORPORATED, HARRISBURG, PA. ALL INTERNATIONAL RIGHTS RESERVED. AMP INCORPORATED PRODUCTS COVERED BY U. S. AND FOREIGN PATENTS AND/OR PATENTS PENDING.

LOC AF DIST 50

REVISIONS					
REV	ZONE	LTR	DESCRIPTION	DATE	APPROVED
F			REDRAWN & REVISED A-3943	6-13-78	KFS / SS
R			ADDED PART NO 60485-4 TTI	10/16/78	GY/RPF
S			OBSOLETE 60485-4 PER A-5193	12-22-81	CS/ GY
T			Revised AF 1752	3-31-86	RPF / GY
U			REV. INSUL. BARREL AF-2280	1-7-87	MSF/ GY
V			REV PER AF-6785	7/5/90	PMF/ GY
W			REV PER AF-8047	7/21/92	PMF/ GY
Y			REV PER 0710-0137-96	10/10/96	PMF/ GY



- 1. CONTINUOUS STEP ON REELS
- 2. DIMENSIONS IN BRACKETS ARE IN INCHES
- 3. 'S' TO BE STAMPED ON PART 60485-4

OBSOLETE

STUD SIZE	WIRE RANGE	INSULATION RANGE	NICKEL	0.76 [.030]	STEEL	60485-4 ³
			NONE	0.76 [.030]	BRASS	60485-3
FINISH	MATERIAL	PART NO	NICKEL	0.76 [.030]	STEEL	60485-2
			TIN	0.76 [.030]	BRASS	60485-1
UNLESS OTHERWISE SPECIFIED DIMENSIONS ARE IN DECIMALS ANGLES			CONTRACT NO		AMP INCORPORATED Harrisburg, Pa.	
MATERIAL			DRAWN		NAME	
SEE TABLE			K. Schneider 6-13-78		RING	
FINISH			R.P. Flantz 8-10-78		SIZE	
SEE TABLE			G. Zwick 8-10-78		CODE IDENT NO	
			SIGN APPD		DRAWING NO	
			OTHER APPD		B 00779 60485	
					SCALE	
					SHEET	