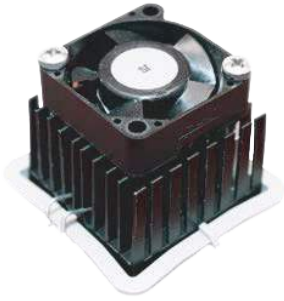


BGA Heat Sink - High Performance fanSINK™ with maxiGRIP™ Attachment



ATS Part#: **ATS-61290K-C1-R0**
Description: 29.00 x 29.00 x 14.50 mm BGA Heat Sink - High Performance fanSINK™ with maxiGRIP™ Attachment
Heat Sink Type: fanSINK
Heat Sink Attachment: maxiGRIP
Equivalent Part Number: N/A

Features & Benefits

- » X-Cut straightFIN heatsink fins offer omnidirectional air flow for optimum thermal performance independent of PCB lay-out
- » Stainless steel screw fan attachment ensures dependable long-term fan to heat sink assembly. 4-40 thread screws are supplied in 4 lengths (1/2", 3/4", 7/8", 1"). Contact ATS for custom options available.
- » Product hole pattern is 20 mm C-C (center to center)
- » Component Attachment: ATS maxiGRIP™ is a proven high reliability mechanical attachment system
- » Meets Telecordia GR-63-Core Office Vibration; ETSI 300 019 Transportation Vibration; and MIL-STD-810 Shock Testing and Unpackaged Drop Testing Standards
- » maxiGRIP™ hardware includes a high performance plastic frame clip and 300 Series stainless steel spring clip-avoiding PCB through holes
- » Provided with pre-assembled Thermal Interface Material (TIM) centered on base
- » “Keep-Out” Requirements: An “Un-Populated” boarder zone of 5mm around the component is necessary to facilitate the installation/removal of the maxiGRIP™. Please refer to the maxiGRIP™ Keep-Out Guidelines and Installation/Removal Instructions for further details

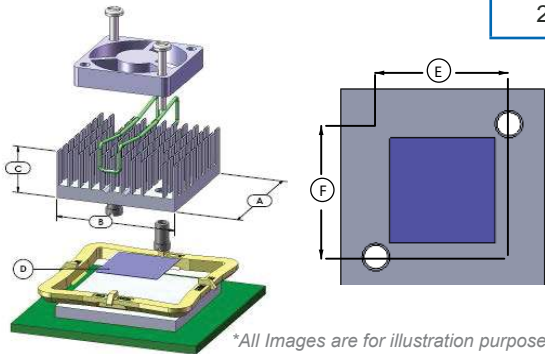
Thermal Performance

| AIR VELOCITY | | @200 LFM 1.0 M/S | @300 LFM 1.5 M/S | @400 LFM 2.0 M/S | @500 LFM 2.5 M/S | @600 LFM 3.0 M/S | @700 LFM 3.5 M/S | @800 LFM 4.0 M/S |
|--------------------|---------------|---------------------|---------------------|---------------------|---------------------|---------------------|---------------------|---------------------|
| THERMAL RESISTANCE | Unducted Flow | 2.30 | N/A | N/A | N/A | N/A | N/A | N/A |
| | Ducted Flow | 0.00 | N/A | N/A | N/A | N/A | N/A | N/A |

Suggested Fan (Not Included)

| Manufacturer | Part # | Voltage | Dimensions (mm) L x H X W | Airflow |
|--------------|--------------------|---------|------------------------------|-----------------------|
| Sunon | MC25060V1-000U-A99 | 5VDC | 25 x 25 x 6.9 | 3.0 CFM (0.084m³/min) |
| Sunon | MC25101V1-000U-A99 | 12VDC | 25 x 25 x 10 | 3.5 CFM (0.098m³/min) |

Product Details

| SCHEMATIC IMAGE | Dimension A | Dimension B | Dimension C | Dimension D | TIM | Finish |
|--|-------------|-------------|-------------|-------------|----------------|--------|
|  | 28.25 | 28.25 | 14.5 | 15 | Chomerics T412 | Black |

NOTES:

- 1) Fan not included. Fan type is specific to individual customer requirements and needs to be independently sourced.
- 2) Dimension A and B refer to component size.
- 3) Dimension C is the heat sink height from the bottom of the base to the top of the fin field.
- 4) Thermal performance data are provided for reference only. Actual performance may vary by application.
- 5) ATS reserves the right to update or change its products without notice to improve the design or performance.
- 6) ATS certifies that this heat sink assembly is RoHS-6 and REACH compliant.
- 7) Contact ATS to learn about custom options available.

*All Images are for illustration purposes only.

REV2_1118