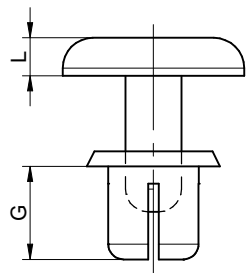
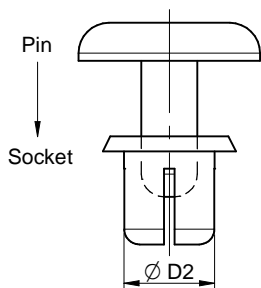
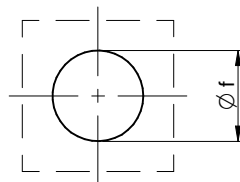
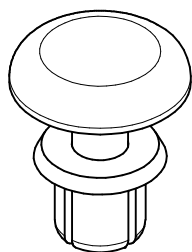
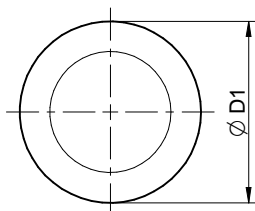
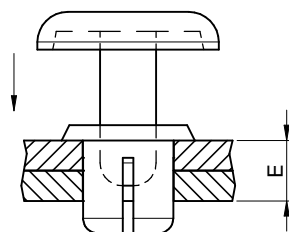


Drilling Hole



Panel Thickness



Flammability according to: UL94 V-2

| Order Code | G (mm) | Ø D2 (mm) | Ø D1 (mm) | L (mm) | E (mm) | Ø f (mm) | Type | Packaging Unit |
|------------|--------|-----------|-----------|--------|--------|----------|------|----------------|
| 700971100 | 3,2 | 2,6 | 5,0 | 1,7 | 1.0-2. | 2,6 | 2 | 1000 |
| 700971200 | 4,2 | 2,6 | 5,0 | 1,7 | 2.0-3. | 2,6 | 2 | |
| 700971300 | 4,8 | 2,6 | 5,0 | 1,4 | 2.5-3. | 2,6 | 2 | |
| 700971400 | 5,5 | 2,6 | 5,0 | 1,4 | 3.0-4. | 2,6 | 2 | |
| 700971600 | 7,2 | 2,6 | 5,0 | 1,4 | 3.0-4. | 2,6 | 2 | |
| 700972100 | 3,6 | 3,0 | 6,3 | 1,7 | 1.0-2. | 3,0 | 2 | |
| 700972200 | 4,5 | 3,0 | 6,3 | 1,7 | 2.0-3. | 3,0 | 2 | |
| 700972300 | 5,5 | 3,0 | 6,3 | 1,7 | 3.0-4. | 3,0 | 2 | |
| 700972400 | 6,5 | 3,0 | 6,3 | 1,7 | 4.0-5. | 3,0 | 2 | |
| 700972500 | 7,5 | 3,0 | 6,3 | 1,7 | 5.0-6. | 3,0 | 2 | |
| 700972600 | 8,1 | 3,0 | 6,3 | 1,7 | 5.5-6. | 3,0 | 2 | |
| 700972700 | 9,1 | 3,0 | 6,3 | 1,7 | 6.5-7. | 3,0 | 2 | |
| 700972800 | 10,0 | 3,0 | 6,3 | 1,7 | 7.5-8. | 3,0 | 2 | |
| 700973200 | 4,5 | 3,5 | 6,3 | 1,7 | 2.0-3. | 3,5 | 2 | |
| 700973300 | 5,0 | 3,5 | 6,3 | 1,7 | 2.5-3. | 3,5 | 2 | |
| 700973400 | 5,5 | 3,5 | 6,3 | 1,7 | 3.0-4. | 3,5 | 2 | |
| 700973500 | 6,0 | 3,5 | 6,3 | 1,7 | 3.0-4. | 3,5 | 2 | |
| 700973600 | 7,0 | 3,5 | 6,3 | 1,7 | 4.5-5. | 3,5 | 2 | |
| 700973800 | 9,0 | 3,45 | 6,3 | 1,7 | 6.0-7. | 3,5 | 2 | |
| 700974100 | 5,0 | 4,0 | 7,8 | 1,9 | 2.5-3. | 4,0 | 2 | |
| 700974200 | 6,1 | 4,0 | 7,8 | 1,9 | 3.5-4. | 4,0 | 2 | |
| 700974300 | 7,1 | 4,0 | 8,0 | 2,0 | 4.5-5. | 4,0 | 2 | |
| 700974400 | 8,0 | 4,0 | 8,0 | 2,0 | 5.5-6. | 4,0 | 2 | |
| 700974500 | 9,0 | 4,0 | 8,0 | 2,0 | 6.5-7. | 4,0 | 2 | |
| 700974600 | 10,0 | 4,0 | 8,0 | 2,0 | 7.5-8. | 4,0 | 2 | |
| 700974700 | 12,0 | 4,0 | 8,0 | 2,0 | 9.5-1 | 4,0 | 2 | |
| 700975100 | 4,6 | 5,0 | 8,9 | 2,2 | 1.5-2. | 5,0 | 2 | |
| 700975200 | 5,5 | 5,0 | 8,9 | 2,2 | 2.5-3. | 5,0 | 2 | |
| 700975300 | 6,5 | 5,0 | 8,9 | 2,2 | 3.5-4. | 5,0 | 2 | |
| 700975400 | 7,5 | 5,0 | 8,9 | 2,2 | 4.5-5. | 5,0 | 2 | |
| 700975500 | 8,54 | 5,0 | 8,9 | 2,2 | 5.5-6. | 5,0 | 2 | |
| 700976100 | 6,0 | 6,0 | 12,0 | 2,5 | 2.5-4. | 6,0 | 2 | |

Würth Elektronik eiSos GmbH & Co. KG
EMC & Inductive Solutions

Max-Eyth-Str. 1
74638 Waldenburg
Germany
Tel. +49 79 42 945 - 0

www.we-online.com
eiSos@we-online.com



CREATED
D. Fandrey

CHECKED
S. Klingler

PROJECTION METHOD 

SCALE
2 : 1

DESCRIPTION
**AsEXRV
Snap rivet**

MATERIAL
Nylon 66, black

GENERAL TOLERANCE
DIN ISO 2768 T1m

ORDER CODE
70097xxxx

WEIGHT STATUS
Released

REV DATE
1.0 2016-03-07

DE Revision
2.0